

154

BLEECKER STREET

BETWEEN THOMPSON STREET & LAGUARDIA PLACE
GREENWICH VILLAGE



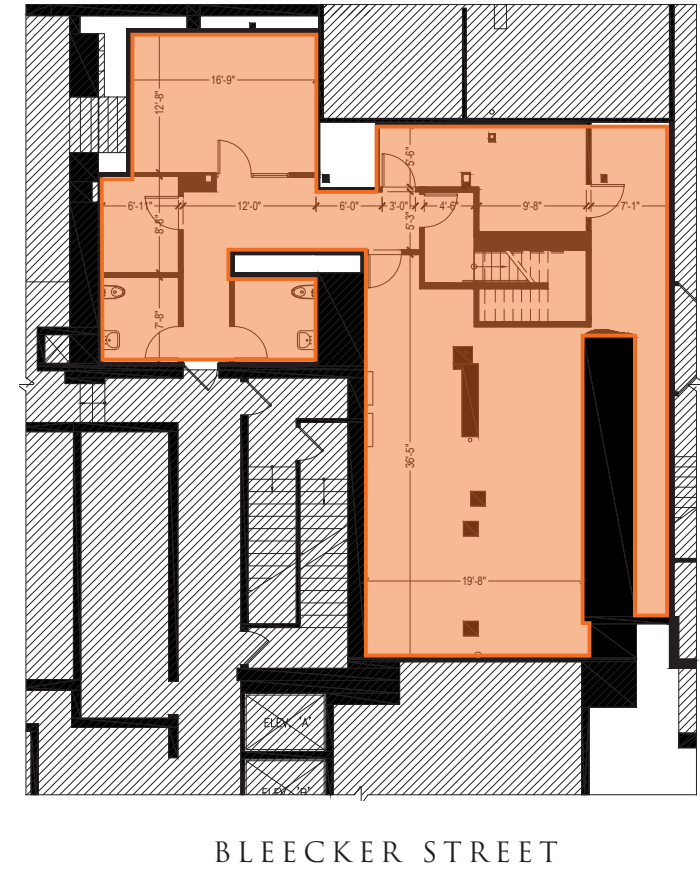
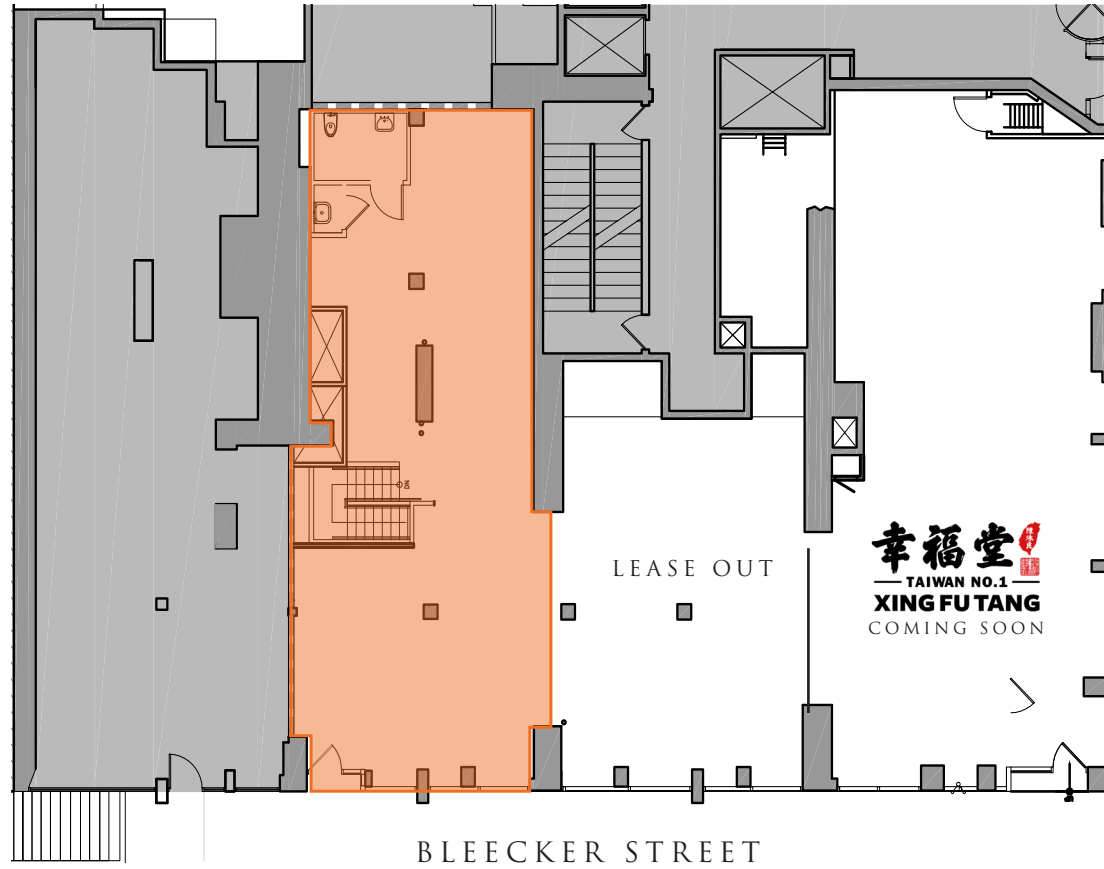
SIZE:	Ground Floor - 1,390 SF Selling Lower Level - 1,838 SF
FRONTAGE:	20'
CEILING HEIGHT:	12' 5"
POSSESSION:	Immediate

HIGHLIGHTS:

- Located in the heart of Greenwich Village, surrounded by dense residential and NYU's campus
- White-box with ADA restroom and kitchen exhaust in place
- At the base of a 135 unit apartment building
- Most uses considered

NEIGHBORING TENANTS:





154

BLEECKER STREET

BETWEEN THOMPSON STREET & LAGUARDIA PLACE
GREENWICH VILLAGE

FOR MORE INFORMATION,
PLEASE CONTACT:

BRANDON BERGER

646.236.8525 | BBerger@ksrny.com

ZACH NATHAN

240.731.8333 | ZNathan@ksrny.com



1385 Broadway, 22nd Floor | New York, NY 10018
212.417.9217

ksrny.com

All information supplied in this marketing presentation and/or flyer is from sources deemed reliable and is furnished subject to errors, omissions, modifications, removal of listings from sale/lease and to any listing condition. Any square footage, dimensions, floor plans and/or technical data set forth are approximations and are subject to further elaboration/confirmation.