

811 W 7th

The Fine Arts Building



**2ND GEN RESTAURANT, SHOWROOM
RETAIL, DESIGN SPACE
AVAILABLE NOW**

Exclusively listed by:

Gibran Begum

Executive Vice President
gbegum@naicapital.com
Direct: 310.806.6109
Mobile: 310.922.0756
CA DRE Lic #01455990

Marty Shelton

Vice President
mshelton@naicapital.com
Direct: 310.440.8500
CA DRE Lic #00835288

finearts811.com

NAI Capital
COMMERCIAL REAL ESTATE SERVICES, WORLDWIDE


MANCHESTER
CAPITAL MANAGEMENT

PROPERTY DETAILS

Address: 811 W. 7th Street, Los Angeles, CA 90017

Uses: 2nd Generation Restaurant, Showroom,
Retail, Design Space.

Total Size: ±12,328 RSF

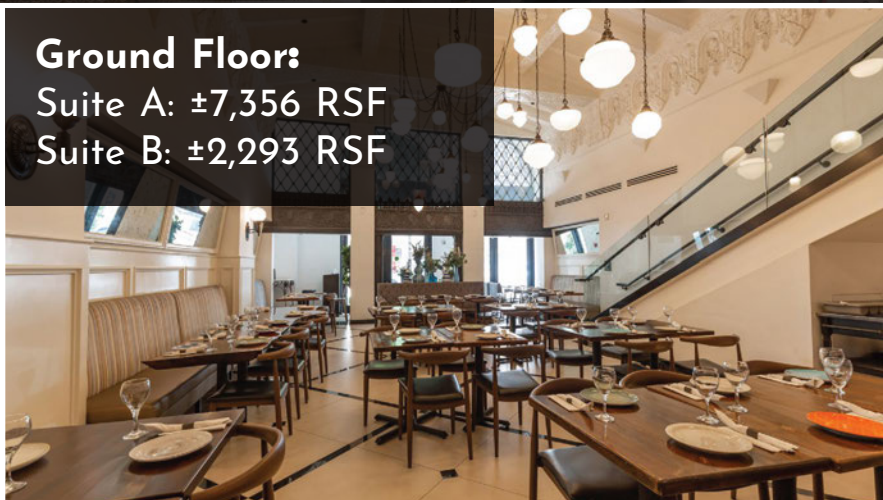
Mezzanine: ±2,679 RSF



Ground Floor:

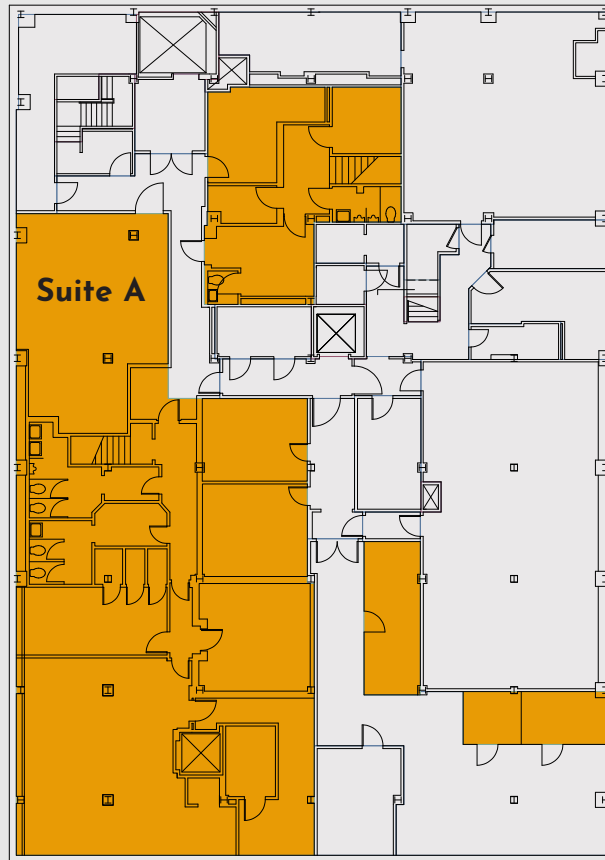
Suite A: ±7,356 RSF

Suite B: ±2,293 RSF

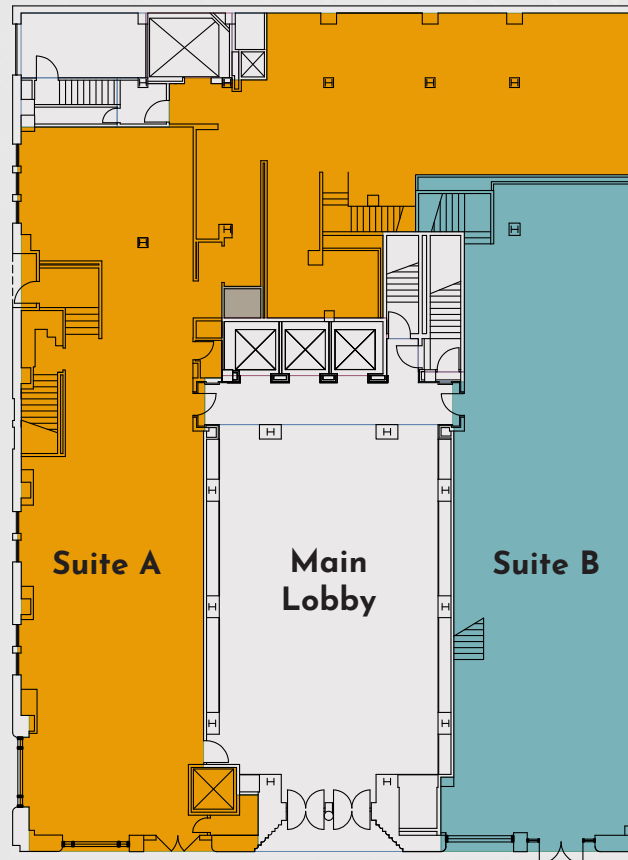


FLOOR PLANS

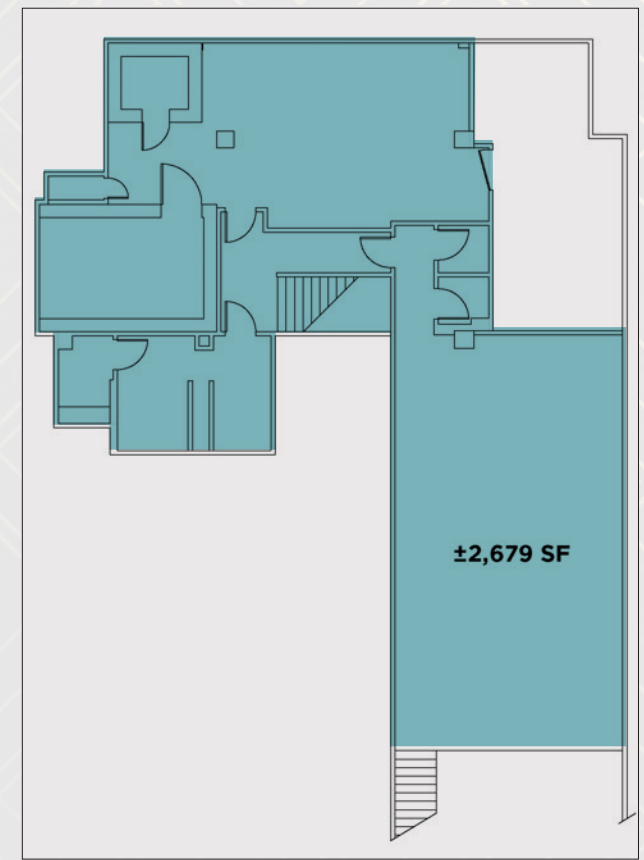
Basement



Ground Floor



Mezzanine



2nd Gen Fully Built-Out Restaurant Bar Space

Suite A: ±7,356 RSF (Ground Floor 4,320 SF + 3,036 SF Basement) - **Potential Future Expansion**

Suite B: ±2,293 RSF Ground Floor + ±2,679 SF Mezzanine



Suite A



Suite B

**Note: actual floor layout may vary slightly from the plans below*





DTLA BY THE NUMBERS



85,000+

Residential population



\$86,000

Average household income



300,000+

Worker population



9,000+

Hotel rooms



23,000 CPD

Traffic counts



36

Median age



811 W 7TH - THE FINE ARTS BUILDING | 4

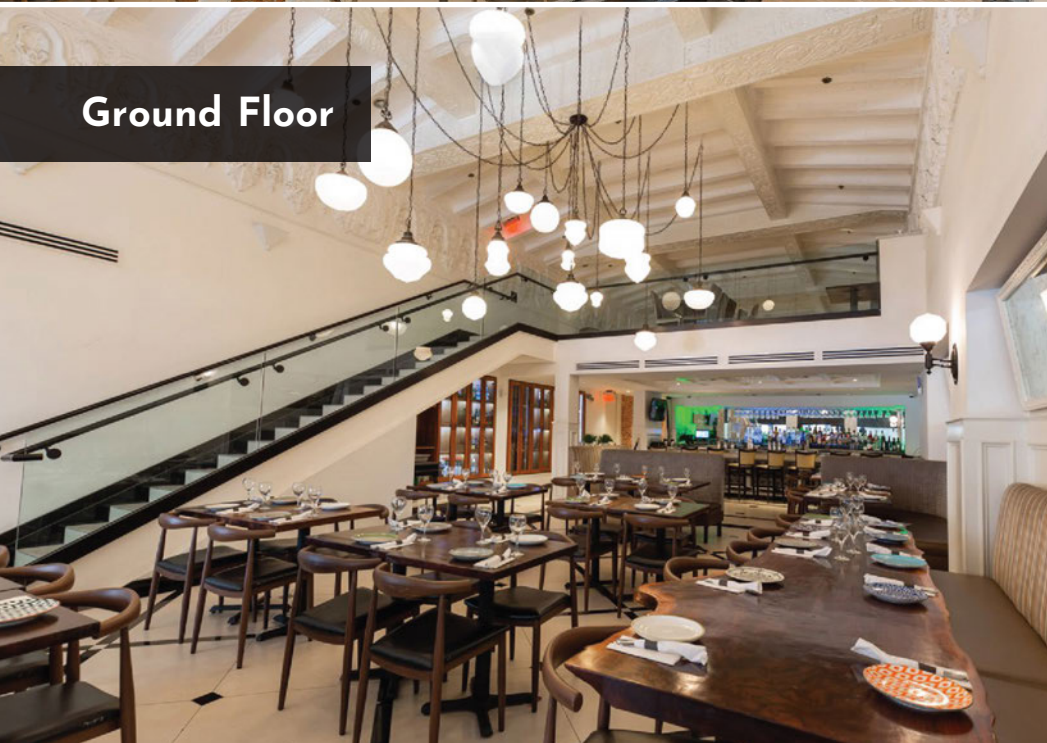
NALCapital
COMMERCIAL REAL ESTATE SERVICES, WORLDWIDE

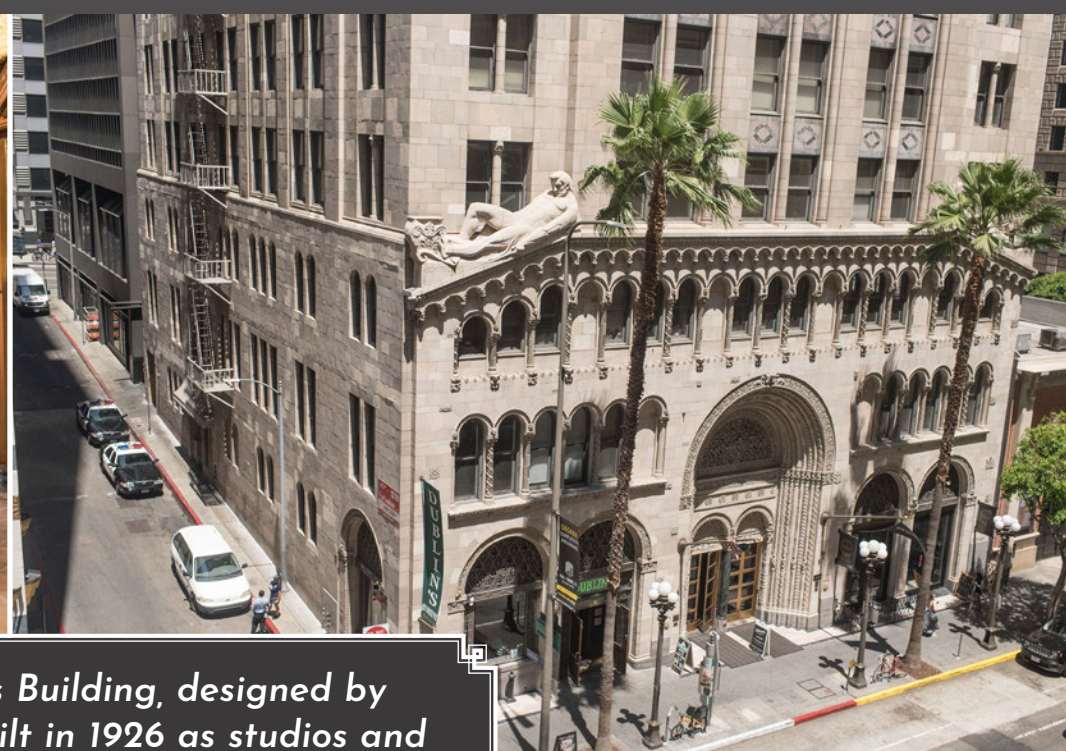
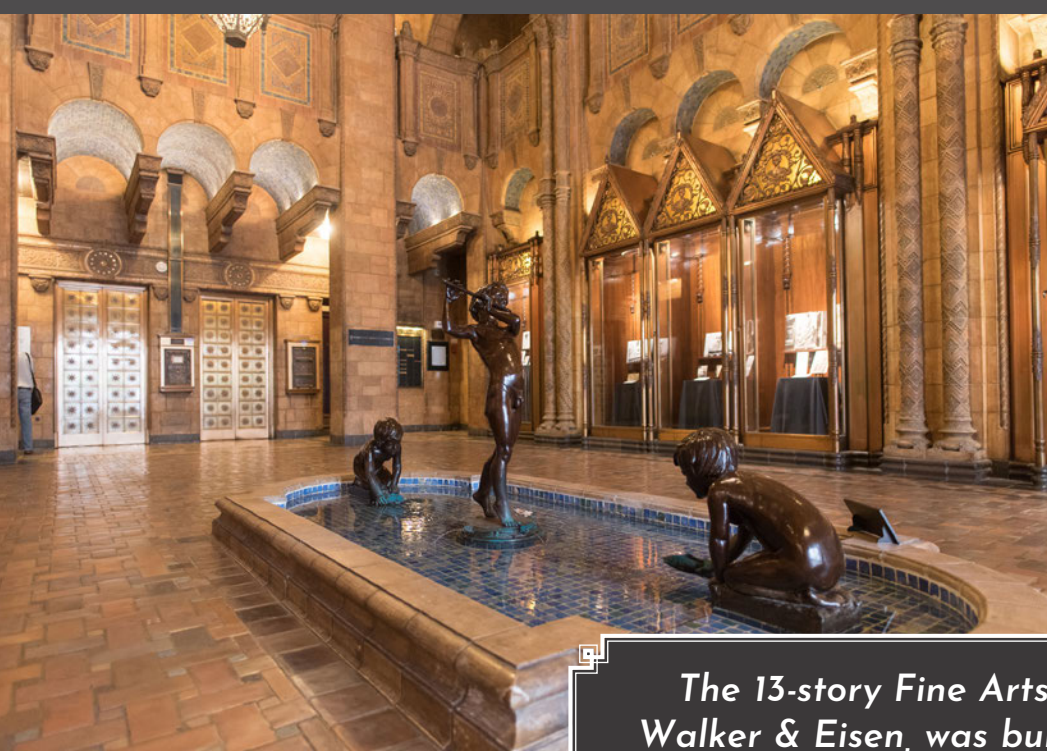
MANCHESTER
CAPITAL MANAGEMENT

Mezzanine



Ground Floor





The 13-story Fine Arts Building, designed by Walker & Eisen, was built in 1926 as studios and galleries for downtown artists and has been fully restored as a premier creative office building.



LOCATION MAP



AMENITIES MAP

WALK
SCORE
97

TRANSIT
SCORE
100

BIKE
SCORE
85

CITY NATIONAL
PLAZA



SETTECENTO
RESTAURANT

INTERCONTINENTAL
HOTELS & RESORTS

SITE

THE
DELPHI

THE
BILTMORE
LOS ANGELES

FIGAT 7TH
SHOPPING MALL

NORDSTROM **1** RACK

TARGET



FIVE GUYS
BURGERS and FRIES

ZARA

H&M



MENDOCINO FARMS
sandwich market



THE BLOC
SHOPPING CENTER

JOEY
RESTAURANTS

LAIFITNESS.



UCLA Health



BOTTEGA LOUIE

DTLA

S FIGUEROA ST

S FLOWER ST

W 7TH ST

W 6TH ST

S GRAND AVE



811 W 7TH - THE FINE ARTS BUILDING | 8

NAL Capital
COMMERCIAL REAL ESTATE SERVICES WORLDWIDE

MANCHESTER
CAPITAL MANAGEMENT



811 W 7th

The Fine Arts Building

**2ND GEN RESTAURANT, SHOWROOM
RETAIL, DESIGN SPACE
AVAILABLE NOW**

Exclusively listed by:

Gibran Begum

Executive Vice President
gbegum@naicapital.com
Direct: 310.806.6109
Mobile: 310.922.0756
CA DRE Lic #01455990

Marty Shelton

Vice President
mshelton@naicapital.com
Direct: 310.440.8500
CA DRE Lic #00835288

NAI Capital Commercial

West Los Angeles
11150 Santa Monica Blvd.
Suite 1550
Los Angeles, CA 90025
310-806-6100

Downtown Los Angeles

800 S. Figueroa St.
Suite 925
Los Angeles, CA 90017
213-632-7700

No warranty, express or implied, is made as to the accuracy of the information contained herein. This information is submitted subject to errors, omissions, change of price, rental or other conditions, withdrawal without notice, and is subject to any special listing conditions imposed by our principals. Cooperating brokers, buyers, tenants and other parties who receive this document should not rely on it, but should use it as a starting point of analysis, and should independently confirm the accuracy of the information contained herein through a due diligence review of the books, records, files and documents that constitute reliable sources of the information described herein. Logos are for identification purposes only and may be trademarks of their respective companies. NAI Capital, Inc. Cal DRE Lic. #02130474.

NAI Capital
COMMERCIAL REAL ESTATE SERVICES, WORLDWIDE



MANCHESTER
CAPITAL MANAGEMENT