

# CHARLOTTE INTERMODAL LOGISTICS CENTER

10137 Horton Road  
Charlotte, NC

FOR LEASE

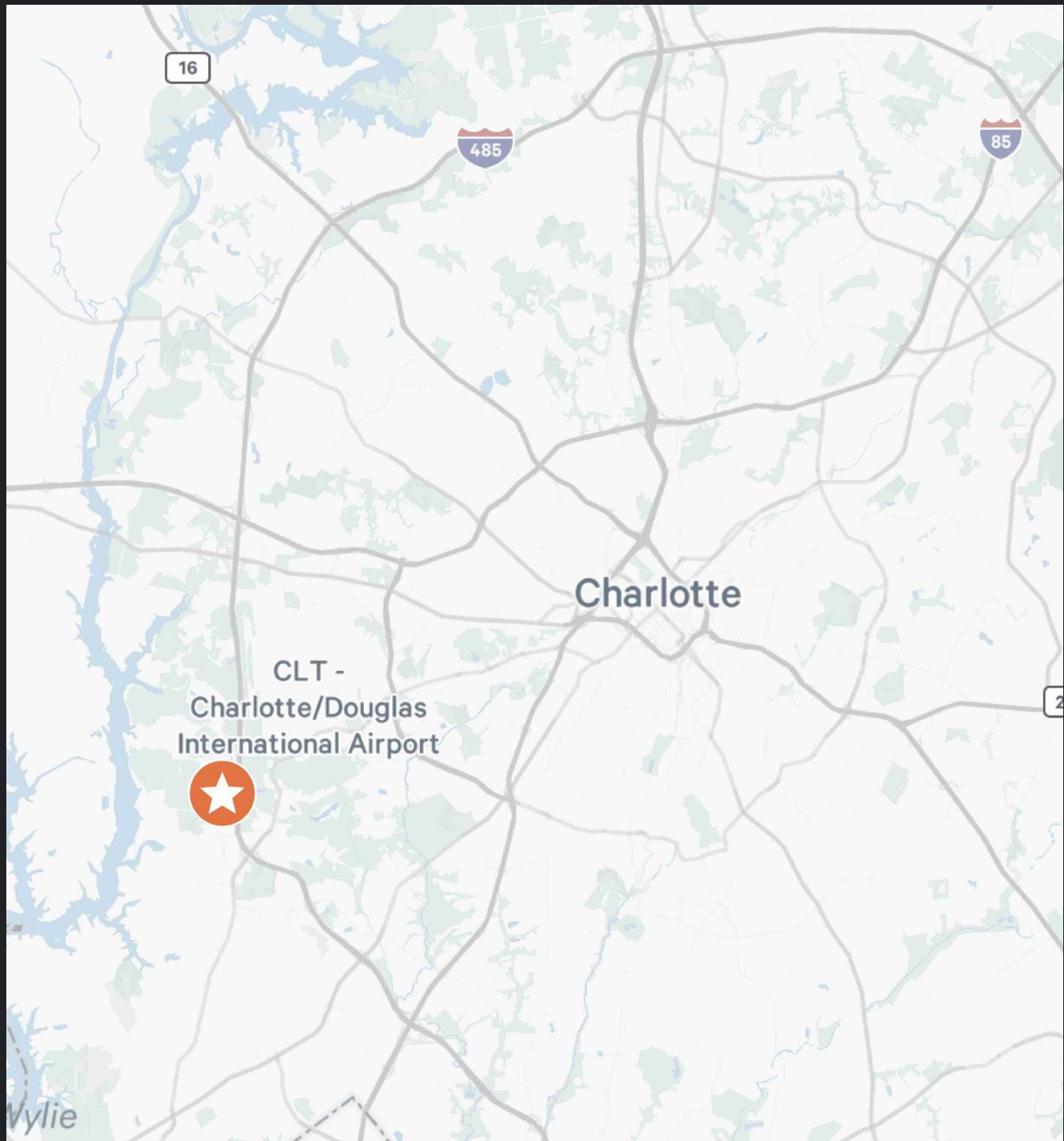
±105,000 - 316,900 SF  
AVAILABLE



LEASED BY **CBRE**

# PROPERTY HIGHLIGHTS

- TOTAL SF AVAILABLE: ±105,000 - 316,900 SF
- OFFICE SF : ±5,213 SF
- ACREAGE: 42.61 AC
- YEAR BUILT: 2020
- AUTO PARKING: 210 SPACES
- CLEAR HEIGHT: 36'
- POWER: 3-PHASE; 2,000 AMPS
- DOCK HIGH DOORS: 64; 50 WITH DOCK PACKAGES
- DRIVE-IN DOORS: 3
- SPRINKLER: ESFR
- TRAILER PARKING: 84 SPACES
- ZONING: I-1(CD)
- LIGHTING: MOTION SENSOR





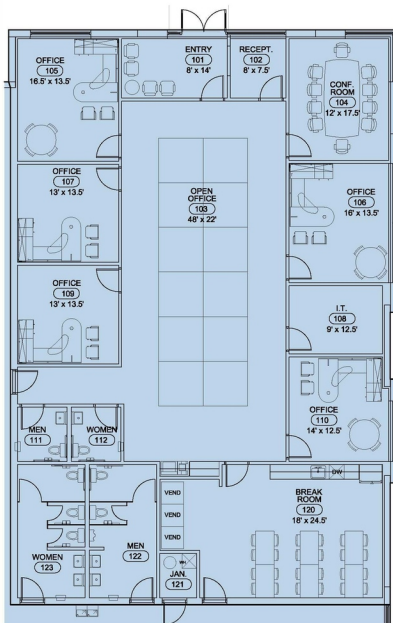


# Floorplan

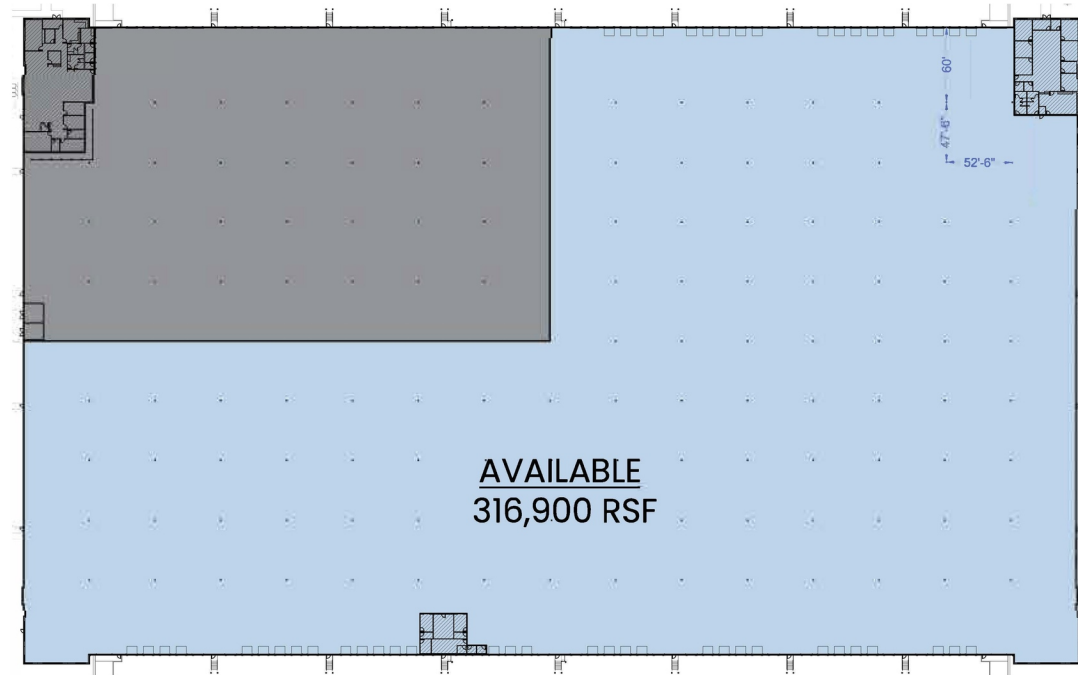
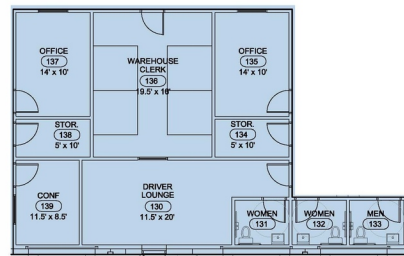
AVAILABLE  
316,900 RSF

10137 HORTON RD.  
CHARLOTTE, NC 28278

## MAIN OFFICE



## SHIPPING OFFICE



# CONTACT INFORMATION

10137 Horton Road  
Charlotte, NC 28278

**Anne Johnson**

Anne.Johnson@cbre.com

+1 704 331 1225

**Bryan Crutcher**

Bryan.Crutcher@cbre.com

+1 704 331 1215

This document is for informational purposes only and does not constitute an offer or acceptance of a lease. Any lease agreement must be in writing and signed by the landlord. No representations or warranties are made except as expressly stated in a signed lease. Information is provided "as is" and may be subject to errors or change without notice.

