

1903 W FARMS ROAD BRONX, NY



1,186
RSF

\$32
RSF

**NEW
RESIDENTIAL
MARKET**

**WALK TO
SUBWAY**
2 5

CONTACT EXCLUSIVE AGENT:

STEPHEN KAUFMAN

914.968.8500 x 315

skaufman@rmfriedland.com

RM FRIEDLAND

COMMERCIAL REAL ESTATE SERVICES

440 Mamaroneck Ave • Harrison, NY 10528 • rmfriedland.com

All information contained herein is based upon information which we consider reliable, but because it has been supplied by third parties, we cannot represent that it is accurate or complete, and it should not be relied upon as such. The offerings are subject to errors, omissions, changes, including price, or withdrawal without notice. The content is provided without warranties of any kind, either express or implied. RM Friedland, LLC, its agents or employees shall not be held liable to anyone for any errors, omissions or inaccuracies under any circumstances. You and your advisors should conduct a careful, independent examination of the property to determine to your satisfaction the suitability of the property for your needs.

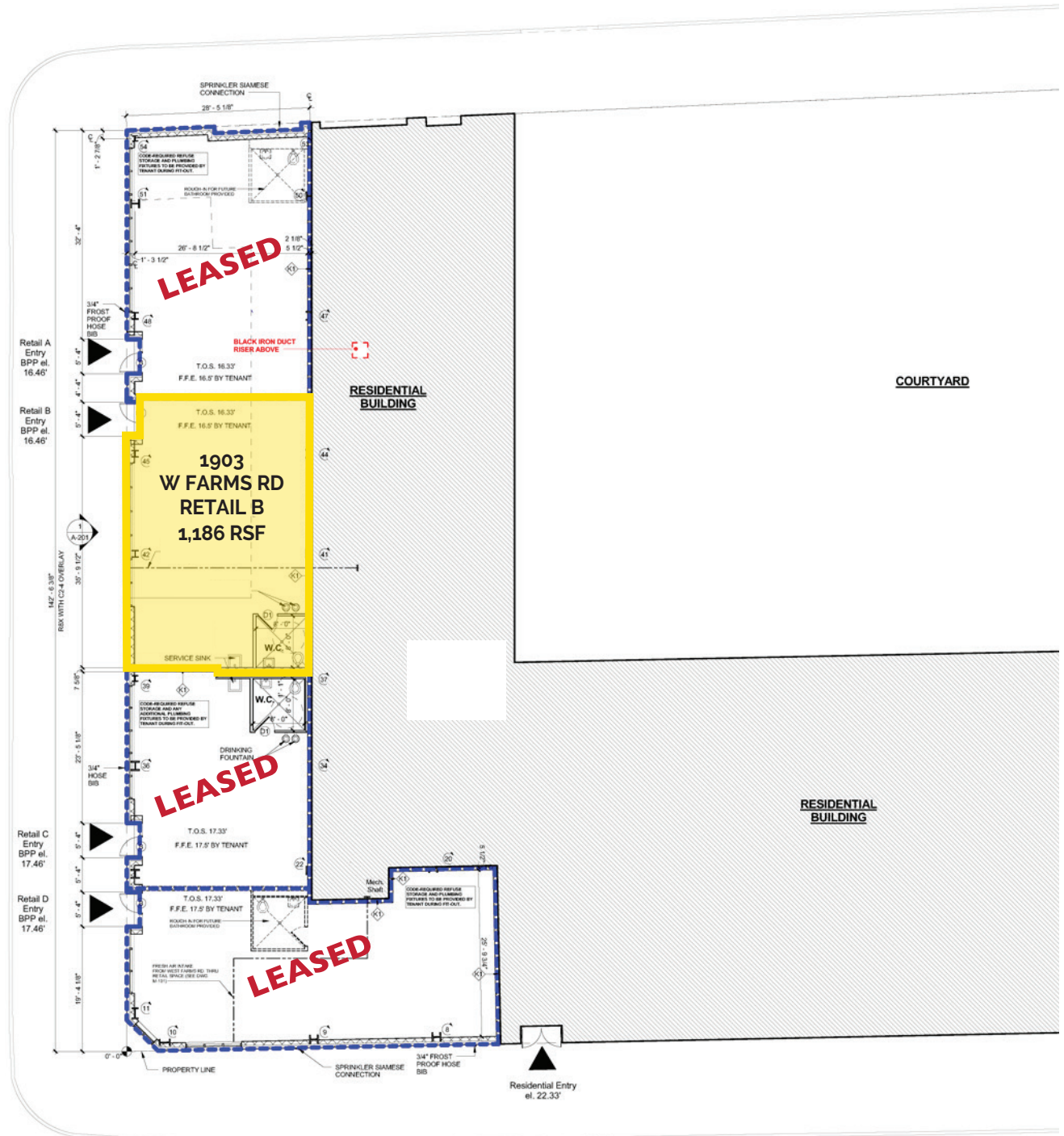
1903 W FARMS ROAD

BRONX, NEW YORK

**1,186 RSF
FOR LEASE**

CROSS BRONX EXPRESSWAY SERVICE ROAD

WEST FARMS ROAD



CONTACT EXCLUSIVE AGENT:

STEPHEN KAUFMAN

914.968.8500 x 315

skaufman@rmfriedland.com

RM FRIEDLAND

COMMERCIAL REAL ESTATE SERVICES

440 Mamaroneck Ave • Harrison, NY 10528 • rmfriedland.com

All information contained herein is based upon information which we consider reliable, but because it has been supplied by third parties, we cannot represent that it is accurate or complete, and it should not be relied upon as such. The offerings are subject to errors, omissions, changes, including price, or withdrawal without notice. The content is provided without warranties of any kind, either express or implied. RM Friedland, LLC, its agents or employees shall not be held liable to anyone for any errors, omissions or inaccuracies under any circumstances. You and your advisors should conduct a careful, independent examination of the property to determine to your satisfaction the suitability of the property for your needs.