



# Copper Terrace

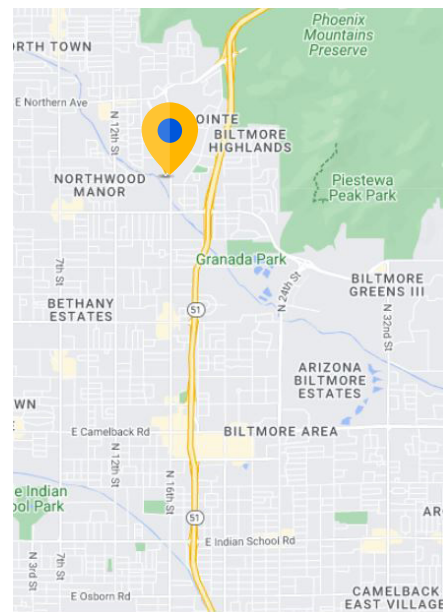
## Phoenix, AZ 85020

### Overview

<b>Building:</b>	7220 N 16th St. Phoenix, AZ 85020
<b>Premises:</b>	Building C   2,653 SF
<b>Building Class:</b>	Office Condo
<b>Asking Price:</b>	\$340.00/SF
<b>Zoning:</b>	C-O Commercial Office
<b>Parking:</b>	5.00/1,000 SF
<b>Furniture:</b>	Can be Made Available
<b>Year Built:</b>	1982

### Building Highlights

- Two-story office condo building
- Surrounded by abundant retail, and restaurant amenities
- Convenient access to the SR-51 Piestewa Peak Parkway via full diamond interchanges at Northern Ave. & Glendale Ave. Offers easy access to Loop 101 and I-10, The Camelback Corridor, Downtown Phoenix and Sky Harbor International Airport



### For more information:



**Jake Bonnell**  
602.826.8615 mobile  
jbonnell@cresa.com

### Cresa

2398 E Camelback Rd. Suite 900  
Phoenix, AZ 85016

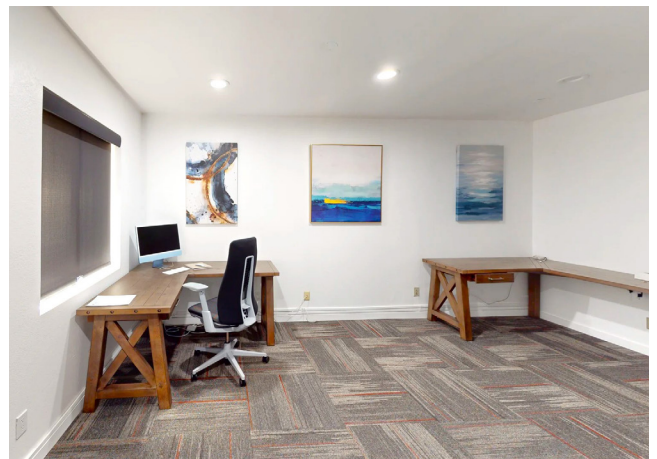


For Sale

cresa

# Copper Terrace

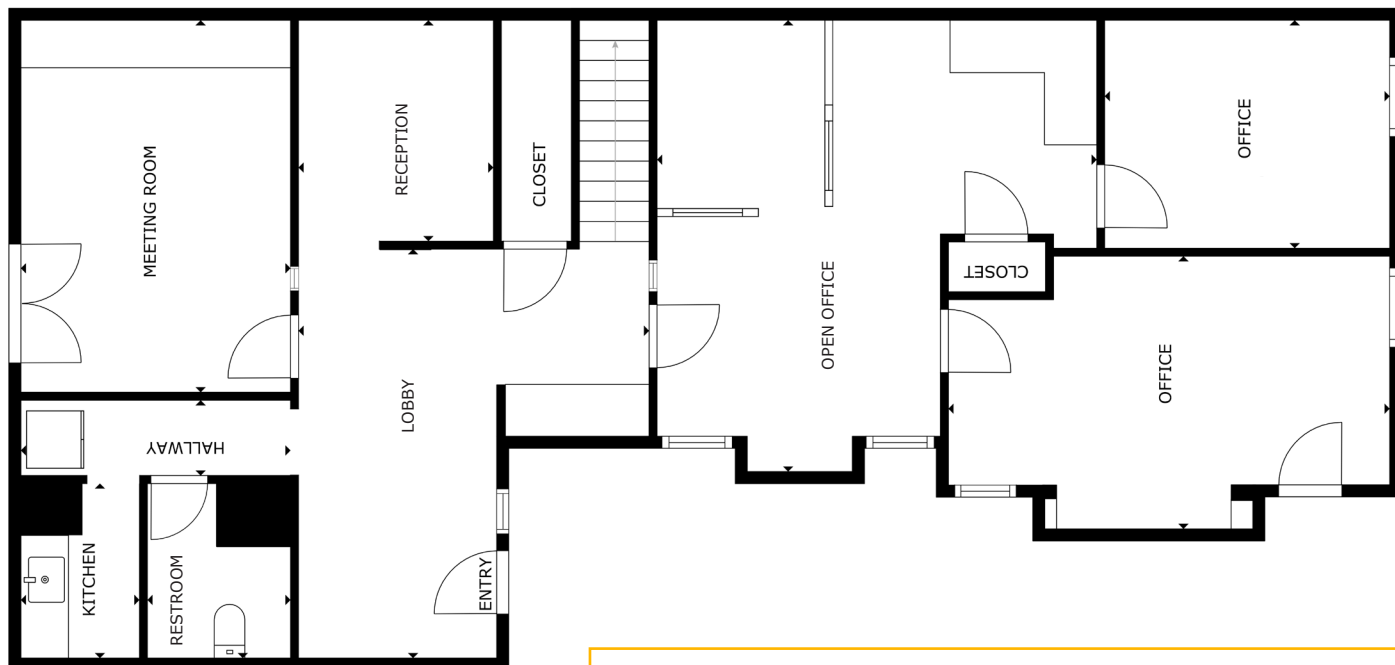
7220 N 16th St. Phoenix, AZ 85020



# Copper Terrace | Building C

7220 N 16th St. Phoenix, AZ 85020

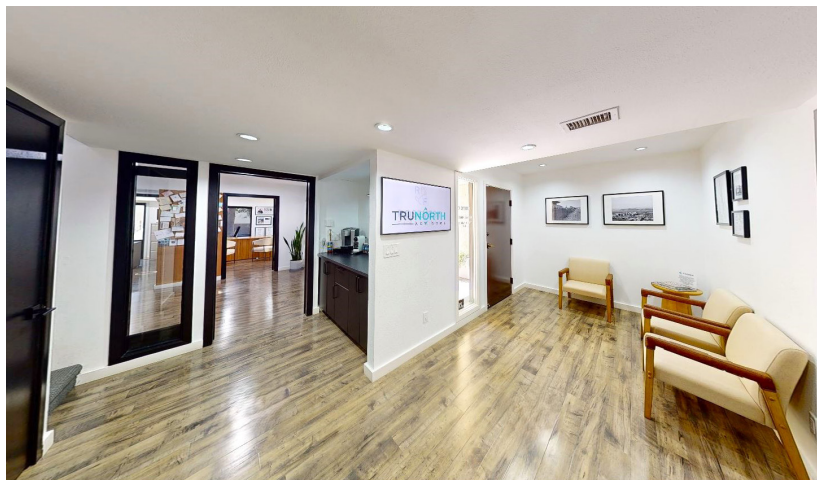
## 1st Floor



[Click Here For Virtual Tour](#) Matterport®

### Space Highlights

- Furniture can be made available
- Lobby/Reception Area, Kitchen, Restroom, Conference Room, 2 Private Offices, Bullpen

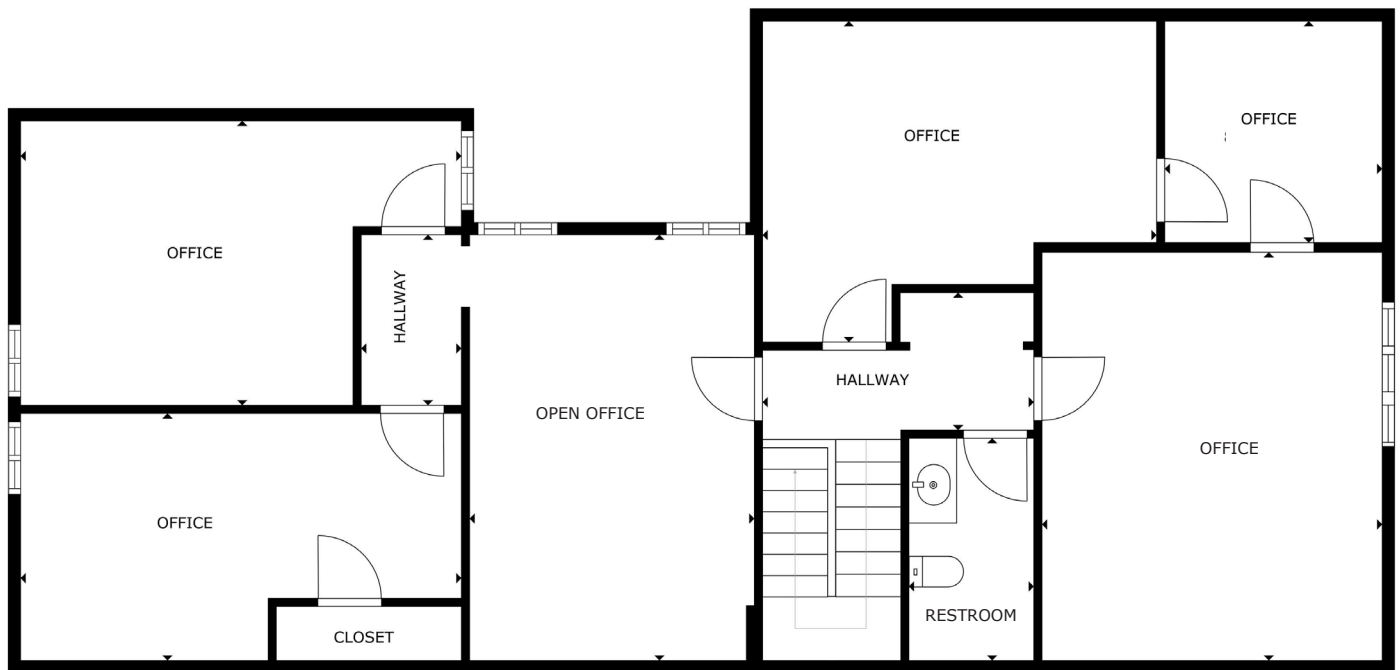




# Copper Terrace | Building C

7220 N 16th St. Phoenix, AZ 85020

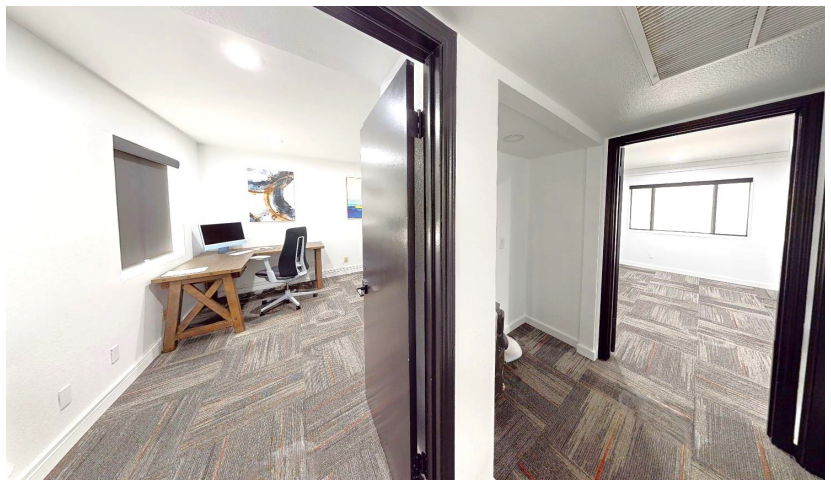
## 2nd Floor



[Click Here For Virtual Tour](#)  **Matterport**<sup>®</sup>

### Space Highlights

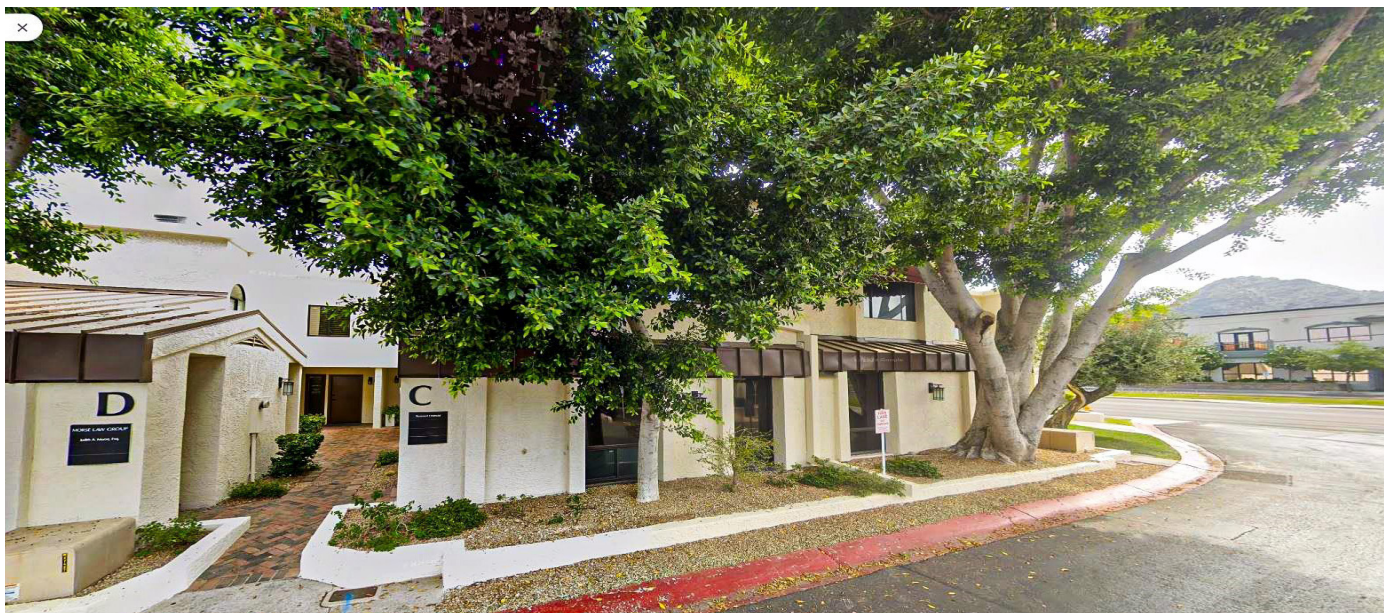
- Furniture can be made available
- Restroom, 5 Offices, Bullpen





# Copper Terrace

Phoenix, AZ 85020



Cresa © 2019. All rights reserved. The information contained in this document has been obtained from sources believed reliable. While Cresa does not doubt its accuracy, Cresa has not verified it and makes no guarantee, warranty, or representation about it. It is your responsibility to independently confirm its accuracy and completeness. Any projections, opinions, assumptions or estimates used are for example only and do not represent the current or future performance of the property. The value of this transaction to you depends on tax and other factors which should be evaluated by your tax, financial and legal advisors. You and your advisors should conduct a careful, independent investigation of the property to determine to your satisfaction the suitability of the property for your needs.