

Office Space For Lease

HISTORIC BUILDING | OFFICE SPACE | PRIME LOCATION

633 YESLER WAY, SEATTLE, WA 98104

Space Highlights



SECOND FLOOR OFFICE

AVAILABLE SPACE: 7,363 SF

Lease Rate: \$23.00 SF Modified Gross

Recently Remodeled Office Space (Some Furniture Available)

Full Floor Opportunity

Features Exposed Brick, Timber, and Natural Light

Two Meeting Rooms

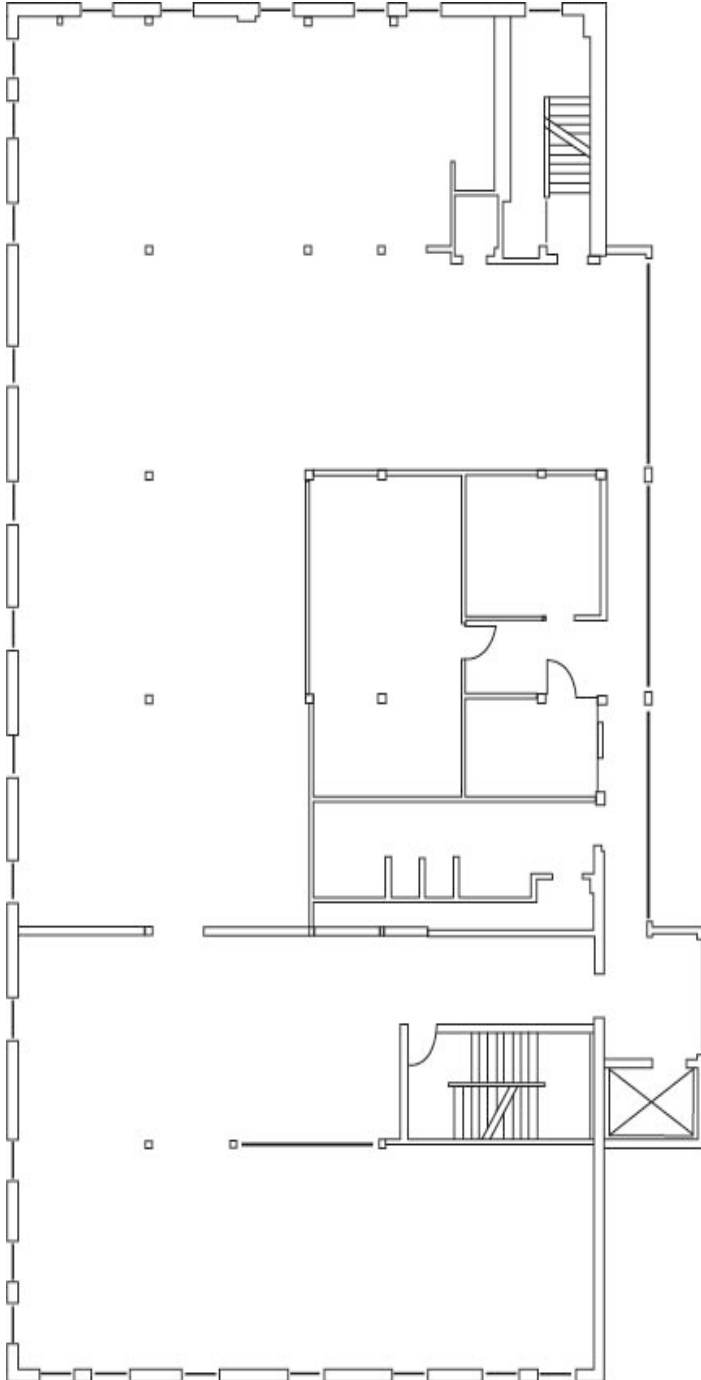
Kitchenette

Elevator Access

Parking 1/1000

Excellent Freeway Access

The information contained herein was obtained from sources believed reliable; however, ORION Commercial Partners LLC makes no guarantees, warranties or representations as to the completeness or accuracy thereof. The presentation of this property is submitted subject to errors, omissions, change of price or conditions prior to sale or lease, or withdrawal without notice.



FOR MORE INFO
CONTACT

JACK DEANE
JACK FRANZ
BOJIDAR GABROVSKI

jdeane@orioncp.com
jfranz@orioncp.com
bgabrovski@orioncp.com

206.707.1315
925.482.7232
847.275.8474

1218 Third Ave, Suite 2200
Seattle, WA 98101
www.orioncp.com

ORION
COMMERCIAL PARTNERS