

224 S Jonesboro Ave,
Russellville, AR



AVAILABLE

Located in a high-traffic area of downtown Russellville, Arkansas, this build to suit site offers an excellent combination of visibility, accessibility, and community integration. Just steps away from popular dining spots and established residential neighborhoods, the property is perfectly positioned for businesses seeking to connect with both local residents and daily visitors. As Russellville continues to grow, this site presents a compelling opportunity for long-term success in a vibrant and evolving market.

Kroger Outparcel 2 Availability

Leasing Fee Available

Future Building

Pre-Leasing

Suite 1 1,300 SF

Suite 2 1,100 SF

Key Features

- Build to Suit
- Ground Lease
- Land For Sale
- Suites Can Be Combined

Russellville, AR
Demographics



Population
29,338

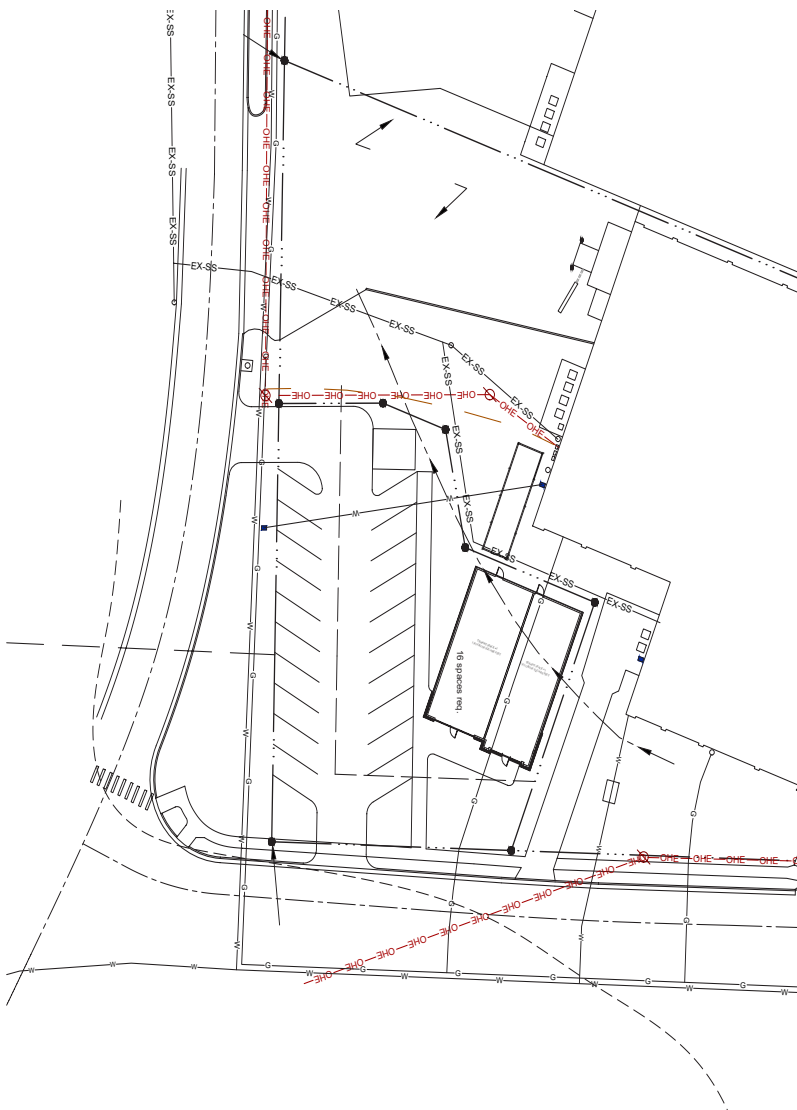


Avg. HH Income
\$48,708



W Main St.
Traffic Count
20,000





Kroger Outparcel 2 2,400 SF

Why Choose us?

- Cross Access And Shared Parking
- Vast Business Networking Landscape
- Near A Mix Of Retail, Office, Restaurants, Entertainment, and Livable Spaces