



FOR LEASE

15206 FM 968, Longview, TX

New 6,017 Sqft. Office/Warehouse Includes:

- 5,625 Sqft. Warehouse
- 392 Sqft. Office Space
- .551 Acres
- 3 Overhead Doors
- Small Yard

The information presented was obtained from sources deemed reliable; however, Reserve Capital Partners does not guarantee its completeness or accuracy.

©RESERVE CAPITAL PARTNERS LLC | RESERVECAPPARTNERS.COM



Nathan Rylander

nathan@reservcappartners.com

972.955.1067



Property Overview

New 6,017 sqft. Office/Warehouse (under construction) located on .551 acres. The Offices consist of 2 offices, 1 restroom and a coffee bar (392 sqft.). The Warehouse consists of 5,625 sqft. with 3- 12'x14' Overhead Doors & 16' Eave Height. The property is outside the city limits. It is located just East of the intersection of E Loop 281 and Interstate 20. The subject property is visible from Interstate 20.

Property Specs

Zoning:	Outside City Limits
Lot Size:	.551 Acres
Total Sqft.:	6,017 Sqft.
Year Built:	2022
Power:	240V
Ceiling Height:	16'
Electric:	Upshur Rual
Water:	Gum Springs
Sewer:	Aerobic

Fax:

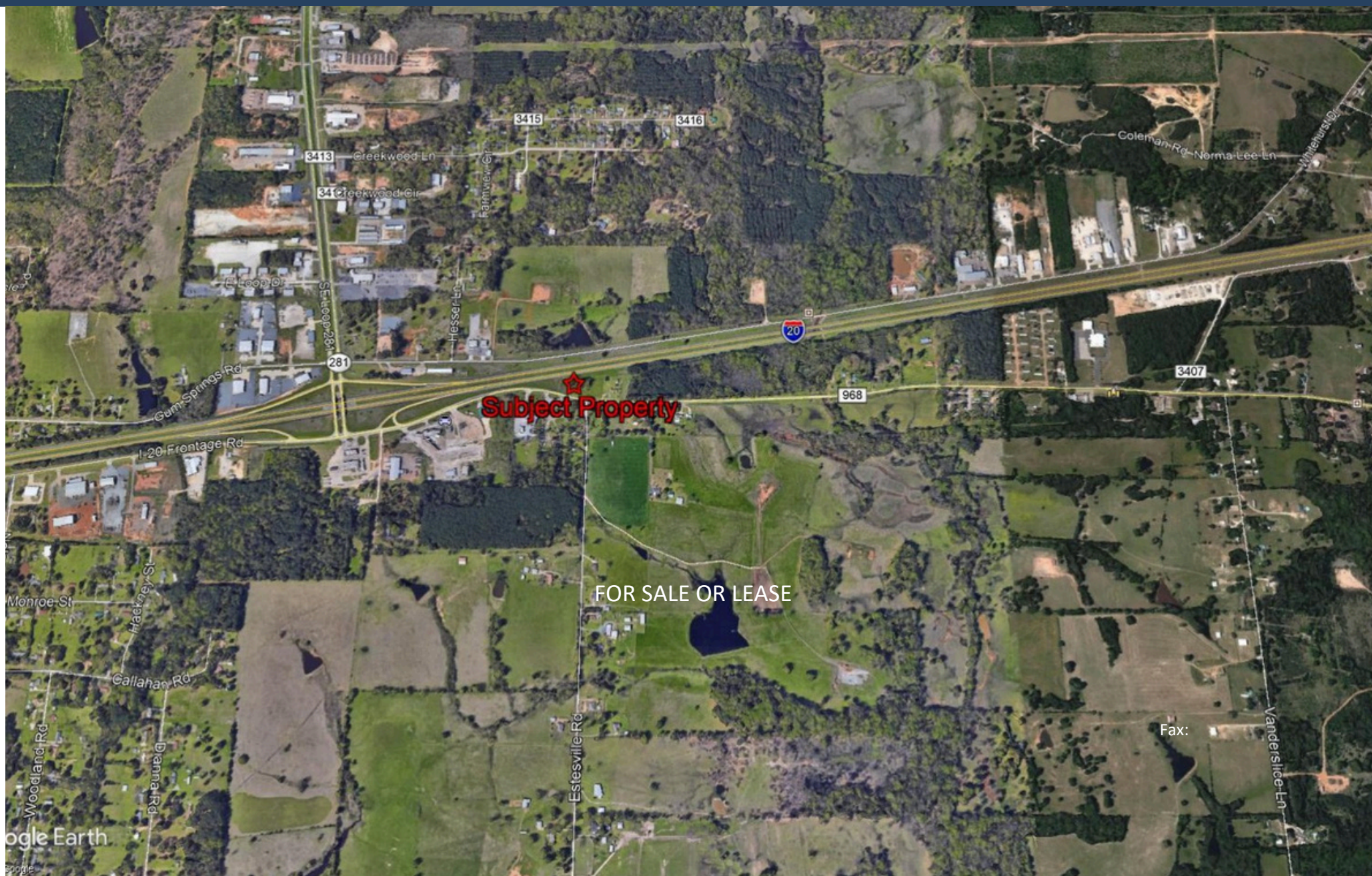




Nathan Rylander
nathan@reservecappartners.com
972.955.1067

RCP

Location Map





Nathan Rylander
nathan@reservecappartners.com
972.955.1067



Aerial Map

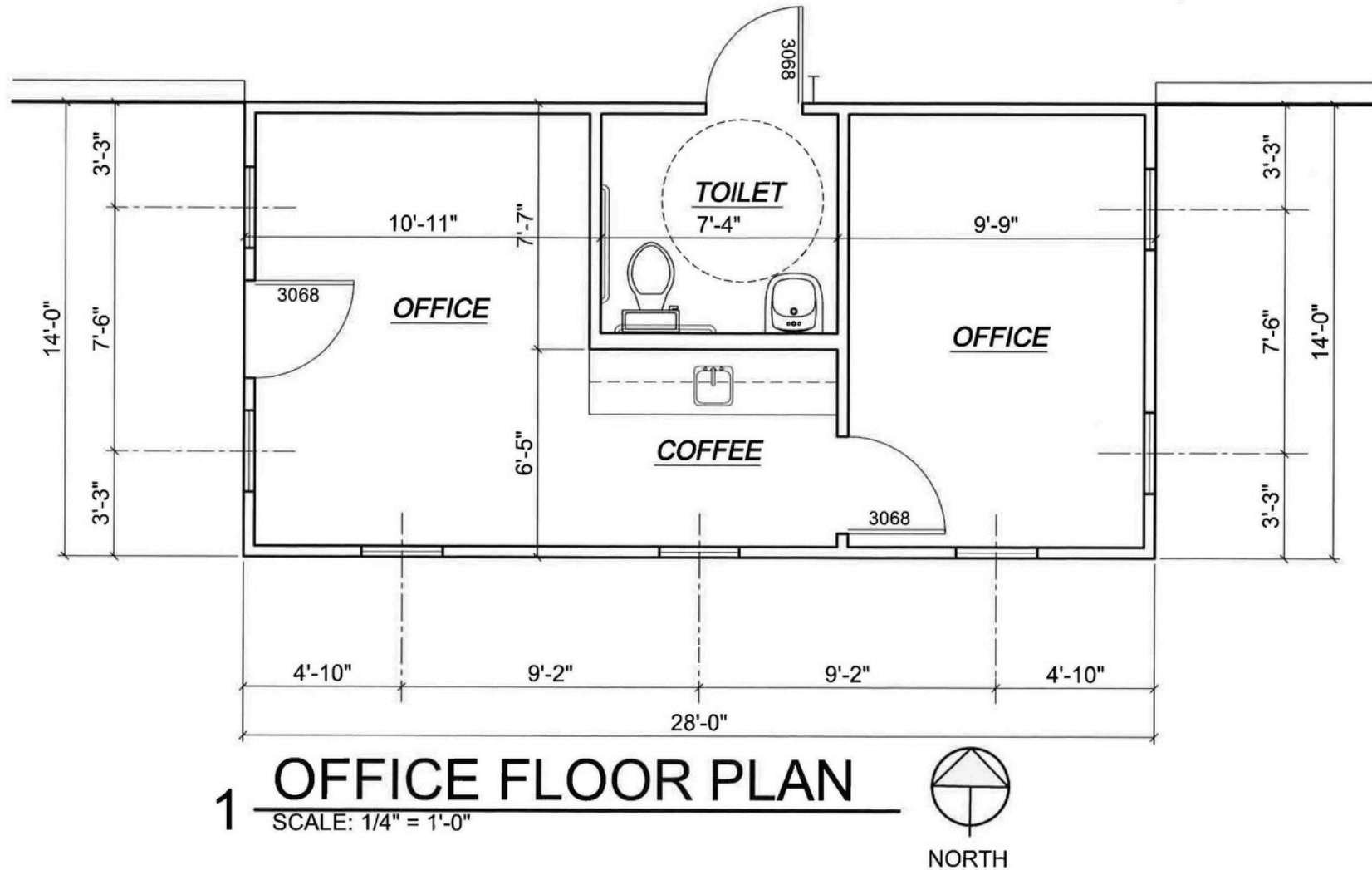




Nathan Rylander
nathan@reservecappartners.com
972.955.1067



Floor Plan



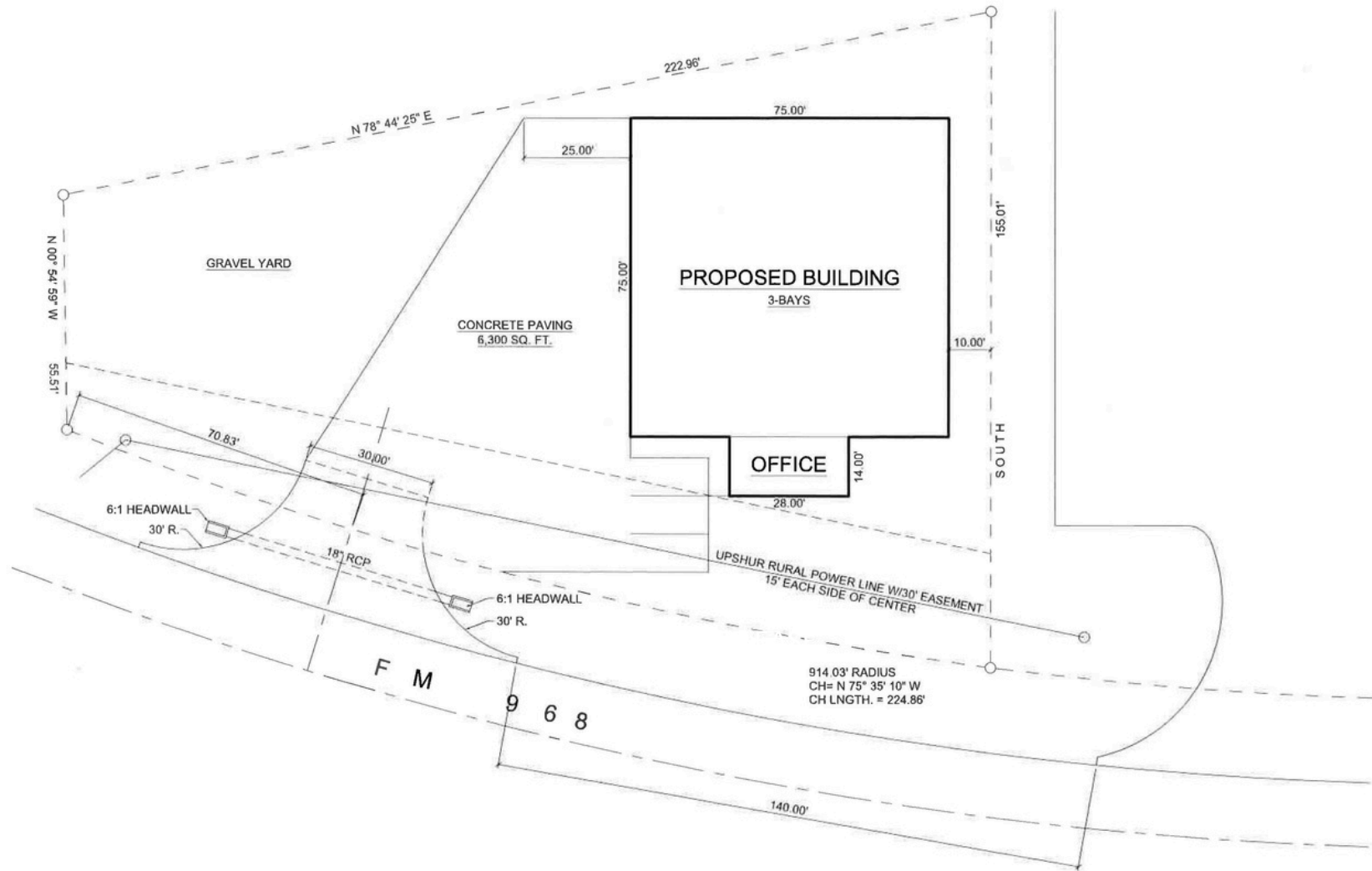
"Dimensions are approximate and not to scale"



Nathan Rylander
nathan@reservecapartners.com
972.955.1067



Proposed Plan





Nathan Rylander
nathan@reservecappartners.com
972.955.1067

RCP

Survey

