



PROPERTY DESCRIPTION

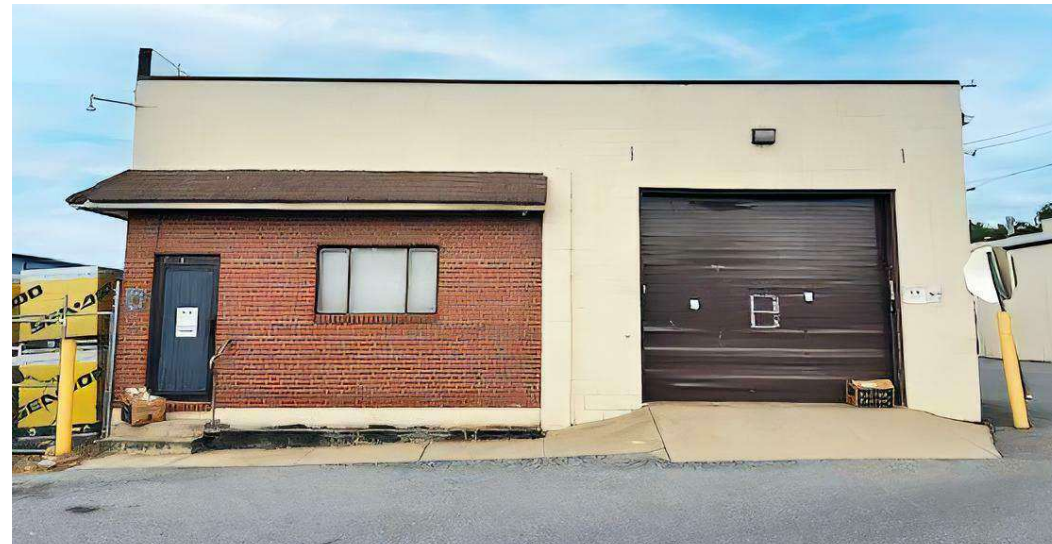
Introducing a versatile 3,200 square foot flex space designed to meet diverse commercial needs. This property features 725 square feet of office space with a kitchen and full bath, providing a comfortable work environment. The spacious warehouse area includes a 12' automatic roll-up door and 14' ceilings which makes this space ideal for storage, manufacturing, or other uses. Its open layout ensures flexibility, making it perfect for businesses balancing office and industrial functions. Located in a prime, accessible area, this space is ready to support your business growth. Contact us today to schedule a viewing and secure this strategic location!

PROPERTY DETAILS

- **Available:** 3,200 SF
- **Office Space:** 725 SF of finished office space with kitchen/ full bath
- **Lease Rate:** Upon request
- **Property Type:** Flex

LOCATION DESCRIPTION

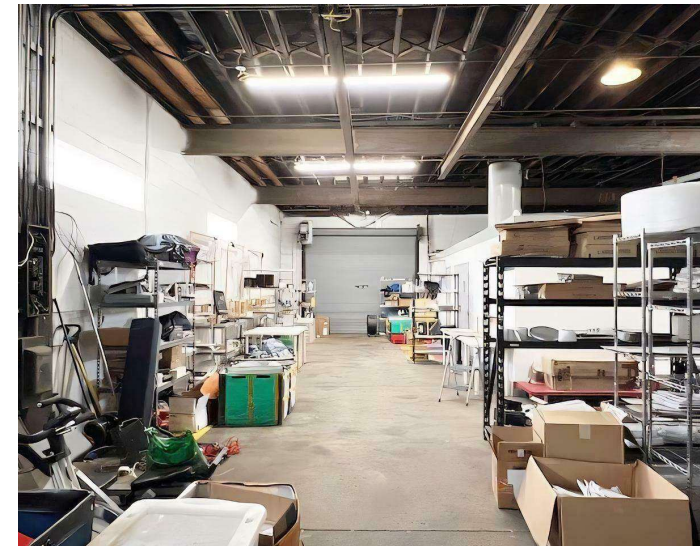
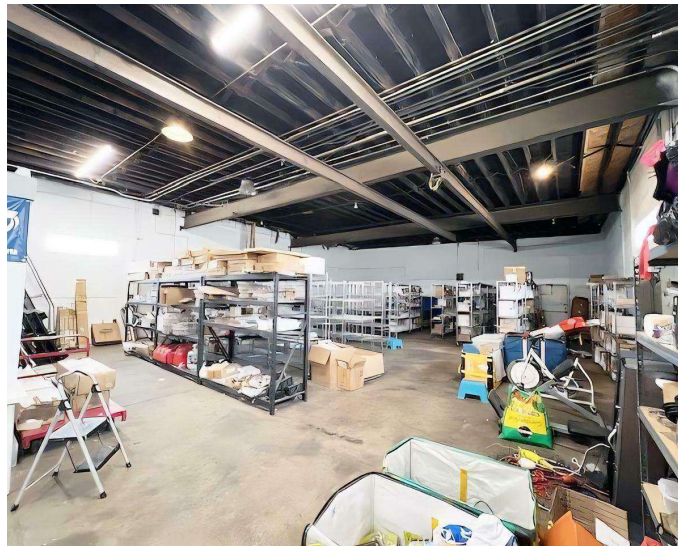
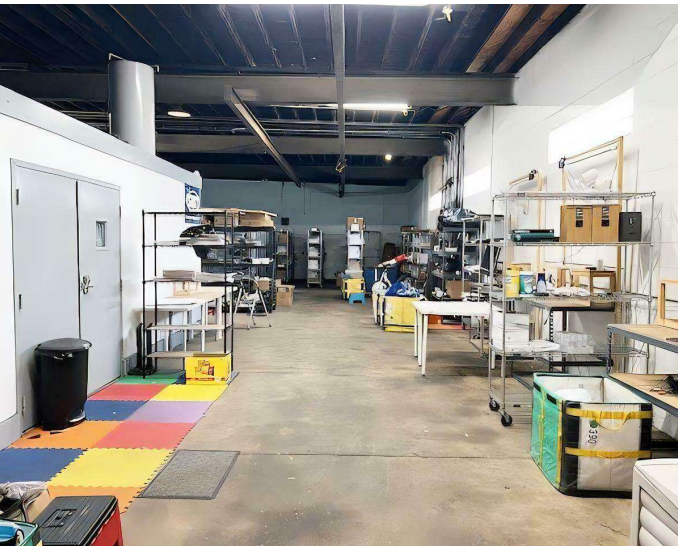
- **Centrally Located:** Easy access to major highways like I-95 and Kirkwood Highway
- **Surrounded by Amenities:** Close to a variety of businesses, dining & shopping
- **High Traffic Exposure:** Excellent visibility in a bustling area
- **Proximity to Downtown Wilmington:** Minutes from Wilmington's business hub
- **Dynamic Location:** Situated outside Wilmington city limits for prime convenience



For More Information, Contact:

Alicia Fox
alicia@dsmre.com
302.283.1800 Office
302.419.5477 Cell

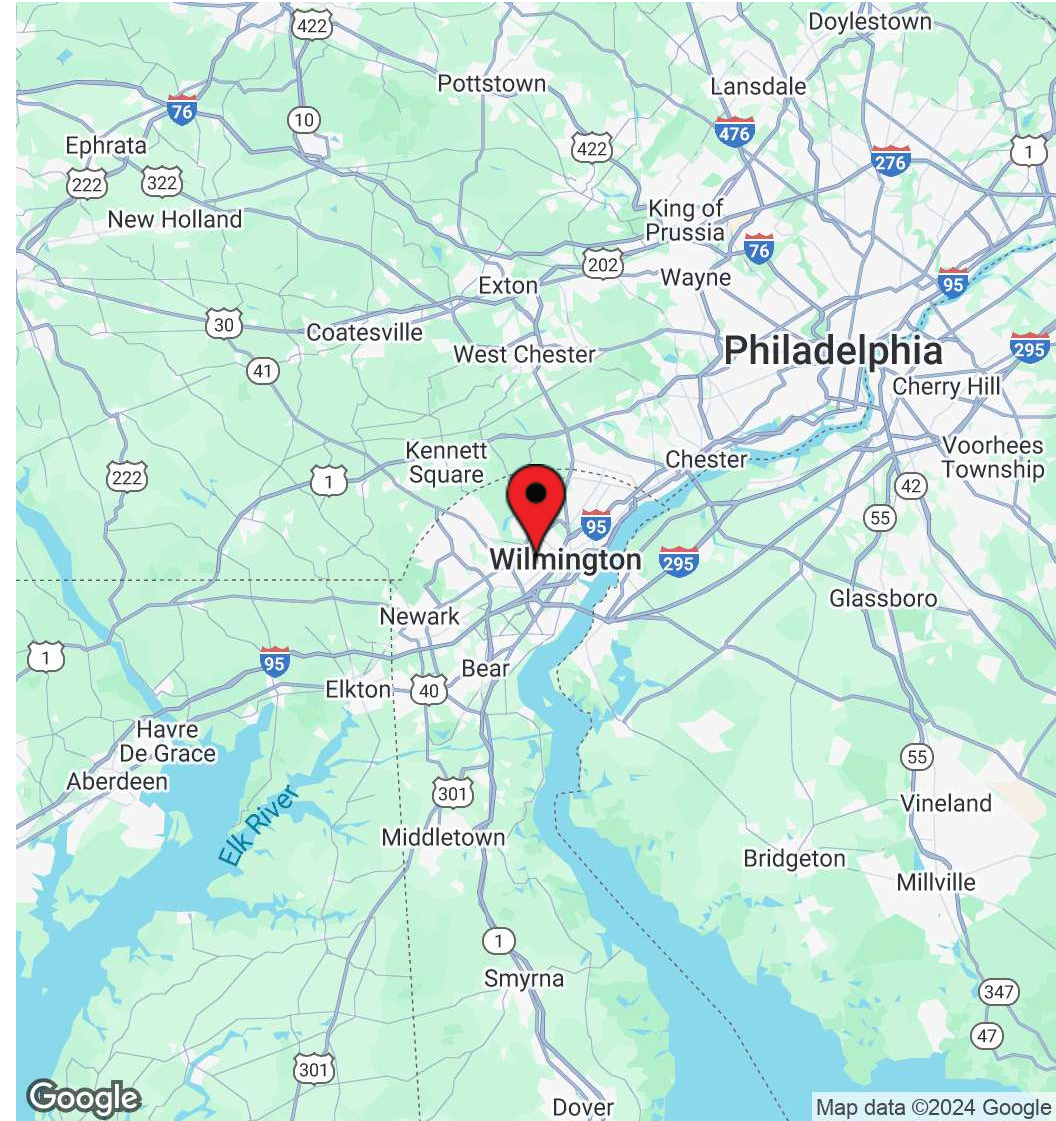
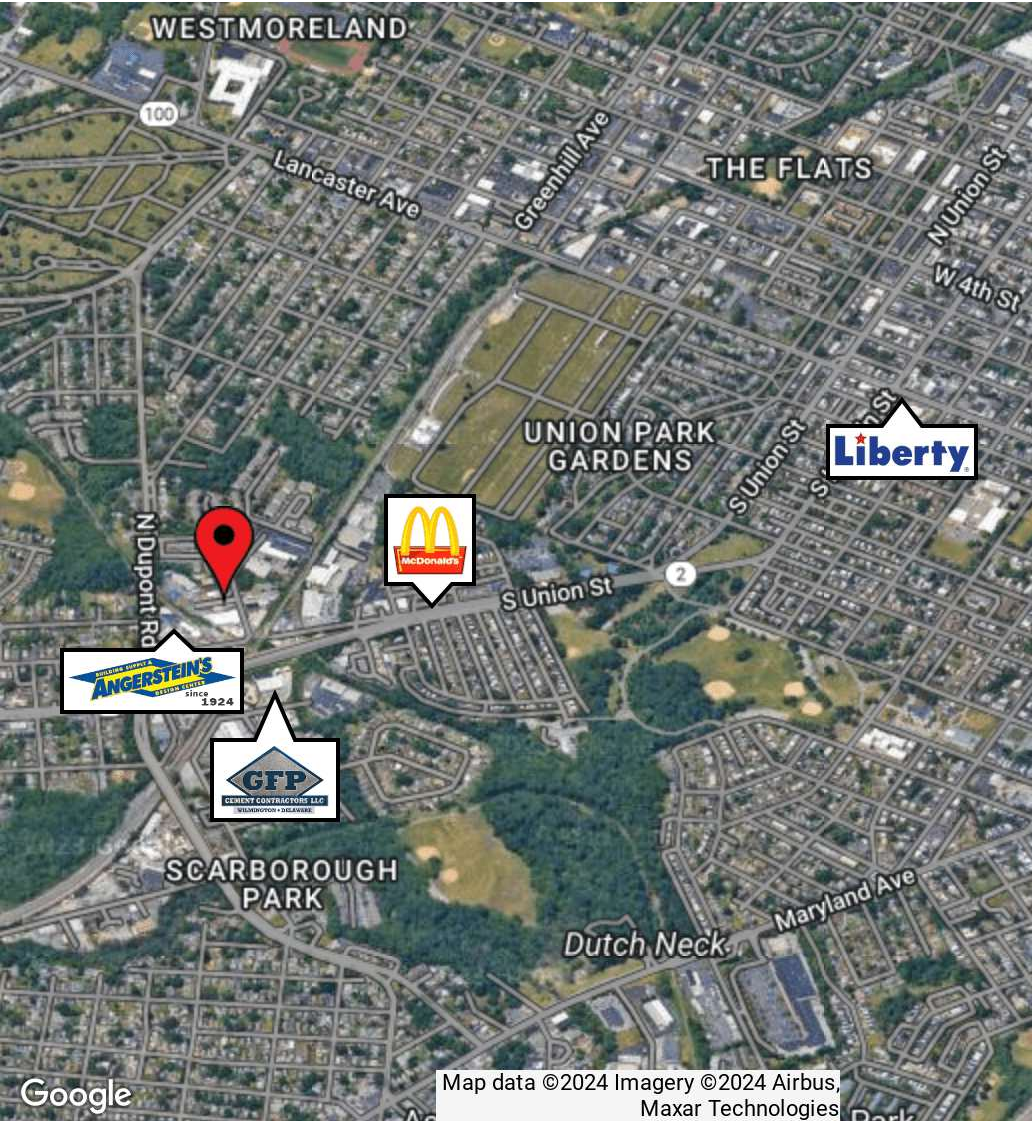
DSM Commercial
Real Estate Services
3304 Old Capitol Trail
Wilmington, DE 19808
dsmre.com



For More Information, Contact:

Alicia Fox
alicia@dsmre.com
302.283.1800 Office
302.419.5477 Cell

DSM Commercial
Real Estate Services
3304 Old Capitol Trail
Wilmington, DE 19808
dsmre.com



For More Information, Contact:

Alicia Fox
alicia@dsmre.com
302.283.1800 Office
302.419.5477 Cell

DSM Commercial
Real Estate Services
3304 Old Capitol Trail
Wilmington, DE 19808
dsmre.com