



SUITE 105: ±750 RSF | SUITE 203: ±2,250 RSF | SUITE 204: ±725 RSF

# BLUM PLAZA MEDICAL & DENTAL BUILDING

2242 Camden Avenue | San Jose | California 95124

(Camden at Bascom Ave.)

**CBRE**



# PROPERTY OVERVIEW

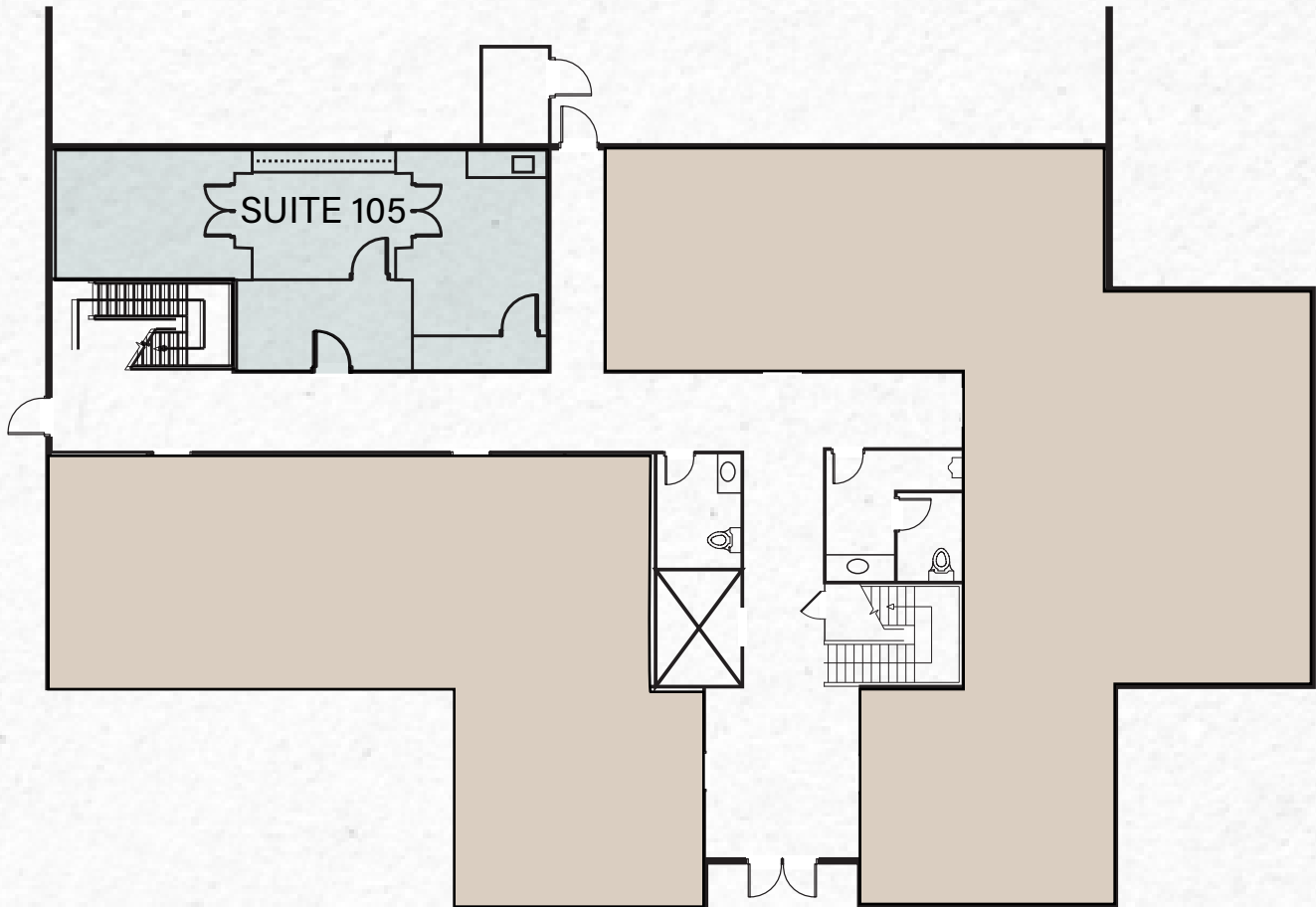
- + Medical and Dental Uses Welcome
- + Elevator Served
- + Monument Signage, Great Visibility
- + Easy Access to Highways 17/880 & 85
- + Within Minutes of Good Samaritan Hospital, Stanford HealthCare, El Camino Health of Los Gatos, Santa Clara Valley Medical Center, and O'Connor Hospital
- + Handicap Entry Access, Elevator & ADA Compliant
- + 4/1,000 Parking; Covered Parking Available
- + Recently Renovated Common Areas
- + Custom Built-Out Cabinetry *in each suite*
- + HVAC Controller System *in each suite*



# FLOOR PLAN

1st Floor

Suite 105: ±750 RSF



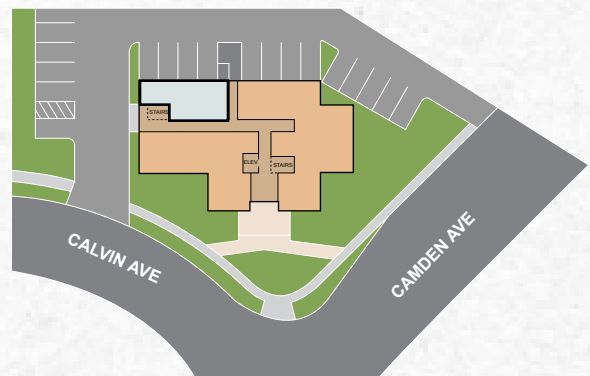
NOT TO SCALE



AVAILABLE



NOT A PART



# FLOOR PLAN

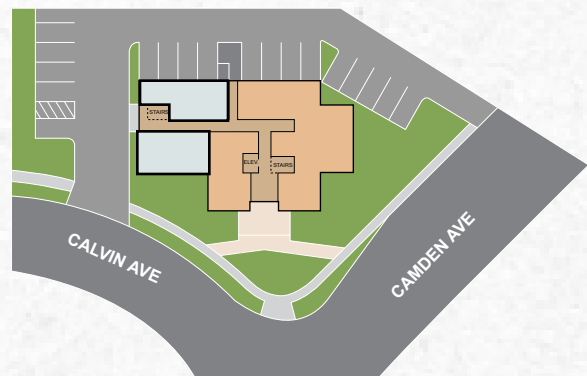
2nd Floor

Suite 203:  $\pm 2,250$  RSF

Suite 204:  $\pm 725$  RSF

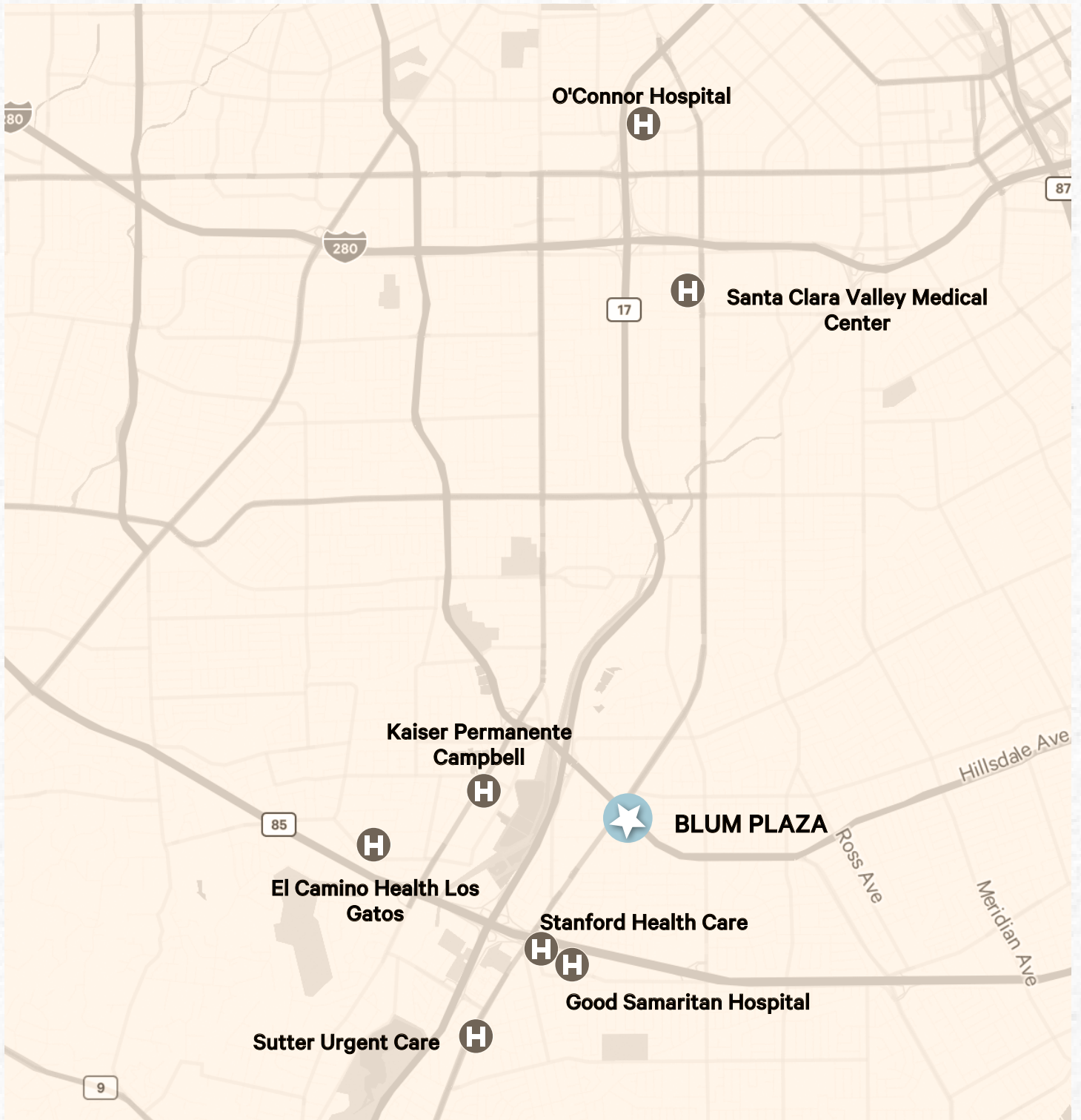


NOT TO SCALE





# MAP







**SUITE 105: ±750 RSF | SUITE 203: ±2,250 RSF | SUITE 204: ±725 RSF**  
**MEDICAL AND DENTAL SUITES FOR LEASE**

# BLUM PLAZA MEDICAL / DENTAL BUILDING

2242 Camden Ave | San Jose | CA

**CBRE**

THOR WILES  
Vice President  
+1 408 453 7478  
thor.wiles@cbre.com  
Lic. 01237980

PAUL LYLES  
First Vice President  
+1 408 453 7443  
paul.lyles@cbre.com  
Lic. 01236021

© 2025 CBRE, Inc. All rights reserved. This information has been obtained from sources believed reliable but has not been verified for accuracy or completeness. CBRE, Inc. makes no guarantee, representation or warranty and accepts no responsibility or liability as to the accuracy, completeness, or reliability of the information contained herein. You should conduct a careful, independent investigation of the property and verify all information. Any reliance on this information is solely at your own risk. CBRE and the CBRE logo are service marks of CBRE, Inc. All other marks displayed on this document are the property of their respective owners, and the use of such marks does not imply any affiliation with or endorsement of CBRE. Photos herein are the property of their respective owners. Use of these images without the express written consent of the owner is prohibited.