



FOR LEASE

First United Methodist Church

1934 108TH AVE NE, BELLEVUE, WA 98004



Large campus church space & monthly contract parking available just north of Bellevue CBD

STEVE PELLUER
425.450.1180
steve.pelluer@kidder.com

KIM HUTCHINS
425.450.1185
kim.hutchins@kidder.com

**Kidder
Mathews**

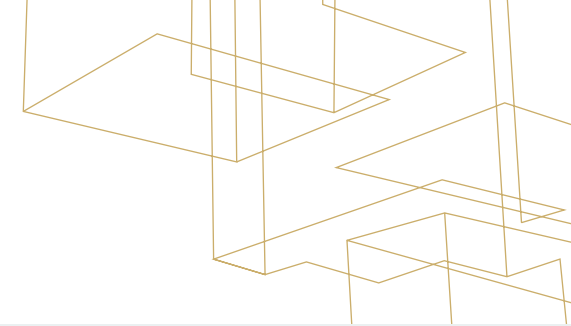
This information supplied herein is from sources we deem reliable. It is provided without any representation, warranty, or guarantee, expressed or implied as to its accuracy. Prospective Buyer or Tenant should conduct an independent investigation and verification of all matters deemed to be material, including, but not limited to, statements of income and expenses. Consult your attorney, accountant, or other professional advisor.

KIDDER.COM

FOR LEASE

First United Methodist Church

1934 108TH AVE NE, BELLEVUE, WA 98004



Shared Use Church Space on Large Campus

LARGE AUDITORIUM seats 655

MEDIUM AUDITORIUM seats 360

INCLUDES multiple classroom and office options

187 parking spaces

CONTRACT PARKING also available

LARGE KITCHEN and Fellowship Hall

FACILITIES are in move-in condition

NONPROFIT tenants preferred

CONTACT BROKERS for lease rates and more information

KIDDER.COM

This information supplied herein is from sources we deem reliable. It is provided without any representation, warranty, or guarantee, expressed or implied as to its accuracy. Prospective Buyer or Tenant should conduct an independent investigation and verification of all matters deemed to be material, including, but not limited to, statements of income and expenses. Consult your attorney, accountant, or other professional advisor.

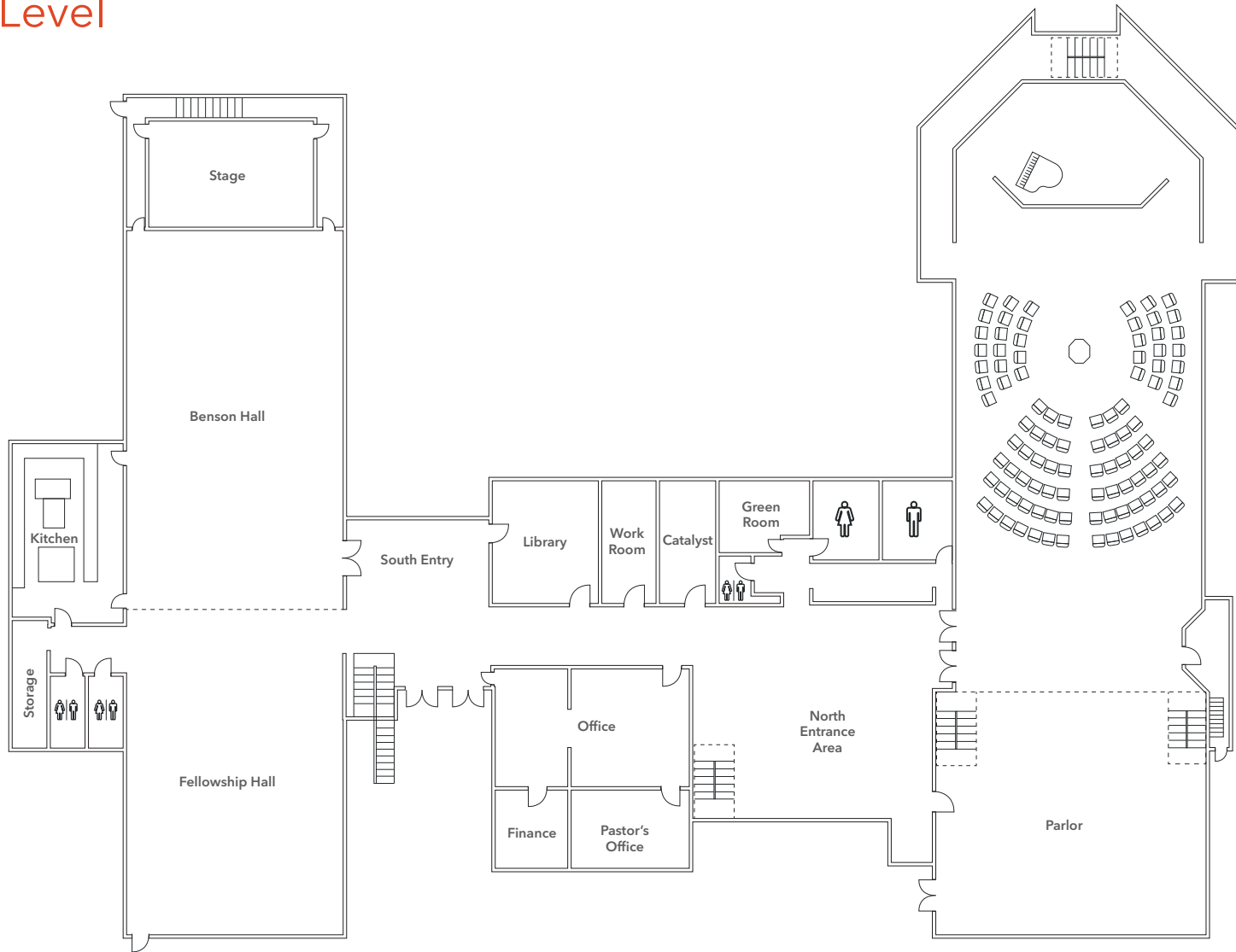
 **Kidder
Mathews**

FOR LEASE

First United Methodist Church

1934 108TH AVE NE, BELLEVUE, WA 98004

Ground Level



KIDDER.COM

This information supplied herein is from sources we deem reliable. It is provided without any representation, warranty, or guarantee, expressed or implied as to its accuracy. Prospective Buyer or Tenant should conduct an independent investigation and verification of all matters deemed to be material, including, but not limited to, statements of income and expenses. Consult your attorney, accountant, or other professional advisor.

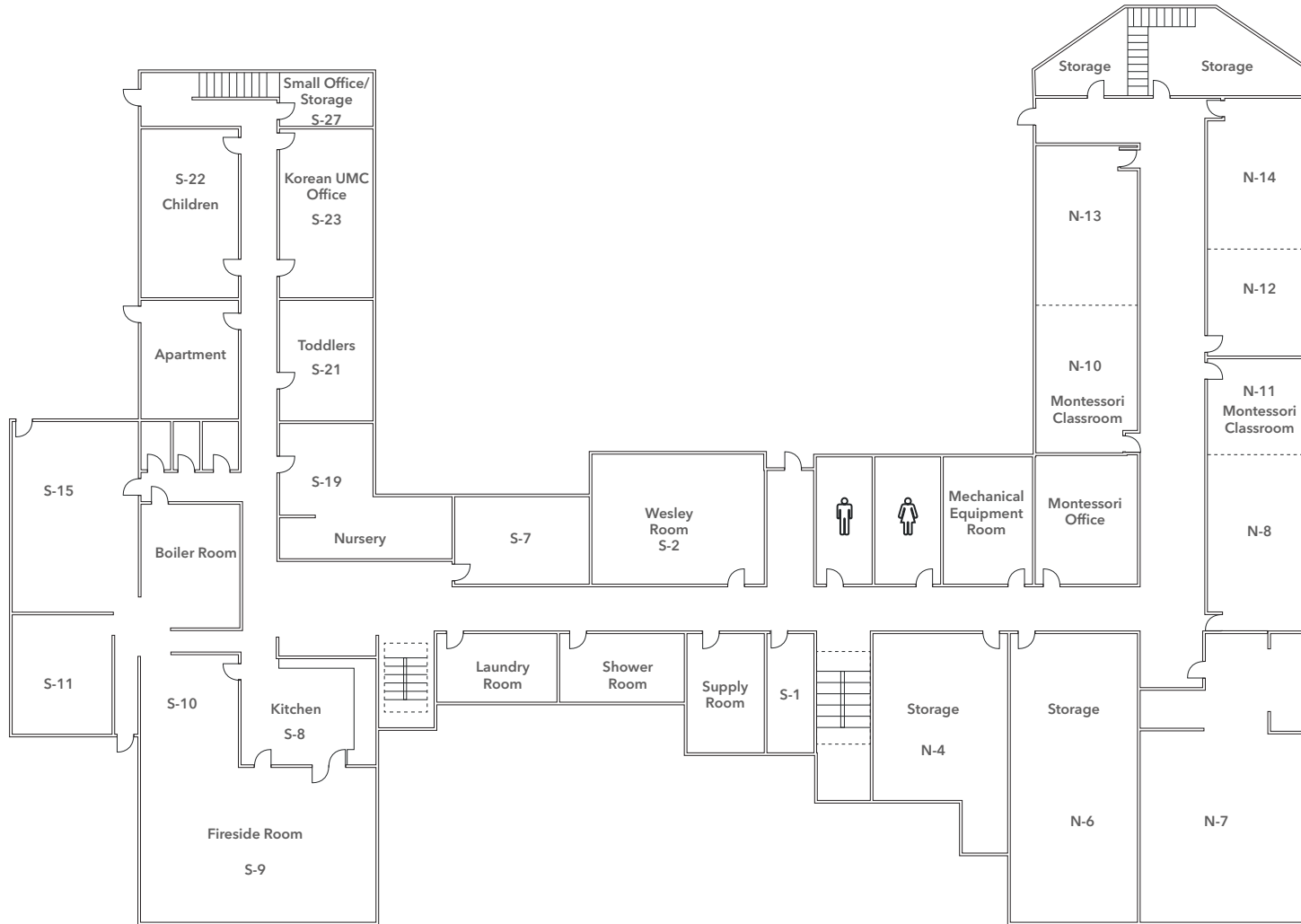
km Kidder Mathews

FOR LEASE

First United Methodist Church

1934 108TH AVE NE, BELLEVUE, WA 98004

Lower Level



KIDDER.COM

This information supplied herein is from sources we deem reliable. It is provided without any representation, warranty, or guarantee, expressed or implied as to its accuracy. Prospective Buyer or Tenant should conduct an independent investigation and verification of all matters deemed to be material, including, but not limited to, statements of income and expenses. Consult your attorney, accountant, or other professional advisor.



FOR LEASE

First United Methodist Church

1934 108TH AVE NE, BELLEVUE, WA 98004

Rare opportunity for church or nonprofit near Bellevue CBD and monthly contract parking available



KIDDER.COM

This information supplied herein is from sources we deem reliable. It is provided without any representation, warranty, or guarantee, expressed or implied as to its accuracy. Prospective Buyer or Tenant should conduct an independent investigation and verification of all matters deemed to be material, including, but not limited to, statements of income and expenses. Consult your attorney, accountant, or other professional advisor.

km Kidder Mathews



**For leasing
information
contact**

STEVE PELLUER
Senior Vice President
425.450.1180
steve.pelluer@kidder.com

KIM HUTCHINS
Senior Vice President
425.450.1185
kim.hutchins@kidder.com

KIDDER.COM

This information supplied herein is from sources we deem reliable. It is provided without any representation, warranty, or guarantee, expressed or implied as to its accuracy. Prospective Buyer or Tenant should conduct an independent investigation and verification of all matters deemed to be material, including, but not limited to, statements of income and expenses. Consult your attorney, accountant, or other professional advisor.

