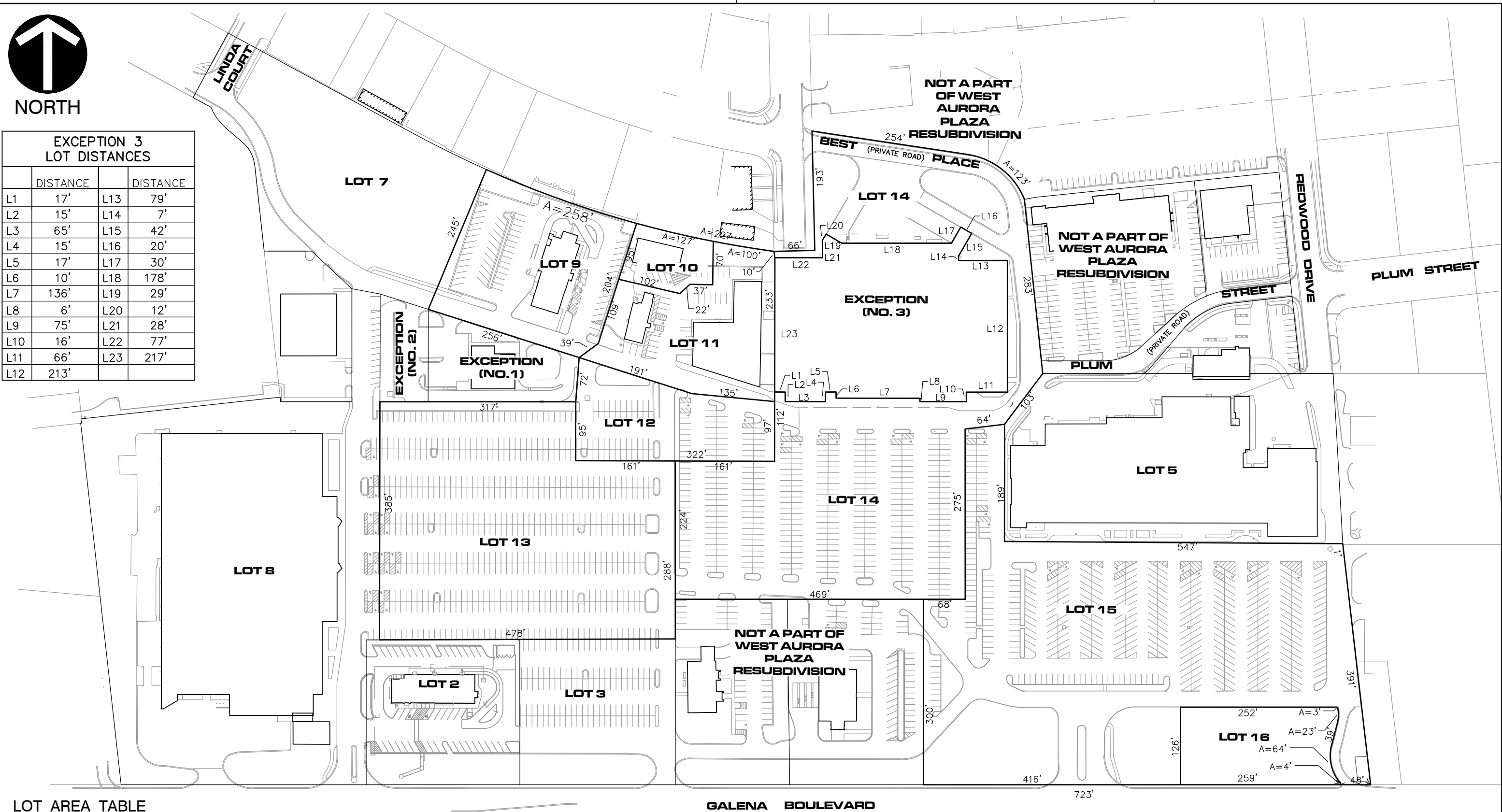




EXCEPTION 3 LOT DISTANCES			
	DISTANCE		DISTANCE
L1	17'	L13	79'
L2	15'	L14	7'
L3	65'	L15	42'
L4	15'	L16	20'
L5	17'	L17	30'
L6	10'	L18	178'
L7	136'	L19	29'
L8	6'	L20	12'
L9	75'	L21	28'
L10	16'	L22	77'
L11	66'	L23	217'
L12	213'		

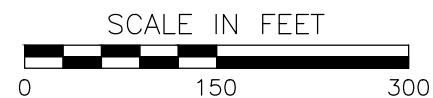



LOT AREA TABLE

LOT 9:	63,112 S.F. OR	1.449 AC.
LOT 10:	12,297 S.F. OR	0.282 AC.
LOT 11:	52,311 S.F. OR	1.201 AC.
LOT 12:	39,639 S.F. OR	0.910 AC.
LOT 13:	168,321 S.F. OR	3.864 AC.
LOT 14:	205,439 S.F. OR	4.716 AC.
LOT 15:	248,849 S.F. OR	5.713 AC.
LOT 16:	31,264 S.F. OR	0.718 AC.
TOTAL AREA:	821,232 S.F. OR	18.853 AC.

NOTES

LOT DIMENSIONS HAVE BEEN INTENTIONALLY
ROUNDED OFF TO THE NEAREST FOOT. SEE
WEST AURORA PLAZA RESUBDIVISION UNIT
NO. 2 SUBDIVISION PLAT FOR ACTUAL
BEARINGS AND DISTANCES.



 Civil & Environmental Consultants, Inc. 1230 East Diehl Road, Suite 200 - Naperville, IL 60563 630-963-6026 · 877-963-6026 www.cecinc.com	WINDMILL HILL, L.C. 3719 BRIDGE AVENUE DAVENPORT, IOWA 52807	
WEST AURORA PLAZA RESUBDIVISION UNIT 2 OVERALL SITE EXHIBIT		
DRAWN BY: SRH	CHECKED BY: LHW	APPROVED BY: LHW
DATE: 04/16/2024	DWG SCALE: 1" = 150'	PROJECT NO: 320-756.0006
EXHIBIT: 9		