

11623 & 11645 ANGUS RD, AUSTIN, TX 78757

TWELVE OAKS

MEDICAL / OFFICE | LEASE



LEASING INFORMATION

NICK TRIOLA

512.441.1062

NICK@KPGCOMMERCIAL.COM

TWELVE OAKS

MEDICAL/OFFICE | LEASE

11623 & 11645 ANGUS RD, AUSTIN, TX 78757



PROPERTY INFORMATION

FEATURES

PROJECT

- Located between N Mopac Expy & TX - 45 with easy access to Parmer Lane
- Five-Building Complex with mix of medical and office users.
- Easily accessible from 183 with proximity to the Domain and Arboretum.
- Less than one mile from Seton Northwest Medical Center
- Travis County location with easy access to Williamson County patients and clients.
- Parking Ratio: 5/1000 RSF

DEMOGRAPHICS

(5-MILE, 2024 Est.)

- Population - 103,178
- Estimated Households - 49,247
- Median Household Income - \$76,316
- Traffic Count
 - US 183 - 180,000 VPD
 - Angus Road - 2,000 VPD
 - Duval Road - 17,000 VPD



LEASING INFORMATION

NICK TRIOLA
512.441.1062
nick@kpgcommercial.com

The information contained in this offering material ("Summary") is confidential, furnished solely for the purpose of the review by a prospective purchaser of the Property and is not to be used for any other purpose or made available to any other person without the express written consent of KPG Commercial, Broker. The material is based in part upon information supplied by the owner of the Property ("Owner") and in part upon information obtained by KPG Commercial, Broker from sources it deems reliable. Summaries of any documents are not intended to be comprehensive or all inclusive but rather only outlines of some of the provisions contained herein or as to engineering or environmental matters. Prospective purchasers should make their own projections and conclusions without reliance upon the material contained herein and conduct their own independent due diligence, including engineering and environmental inspections, to determine the condition of the property and the existence of any potentially hazardous material used in the construction or maintenance of the building or located on site.

TWELVE OAKS

MEDICAL/OFFICE | LEASE

11623 & 11645 ANGUS RD, AUSTIN, TX 78757

✓ AVAILABILITY

A4 (2,016 RSF)

C11 (2,250 RSF)

C23 (3,180 RSF)

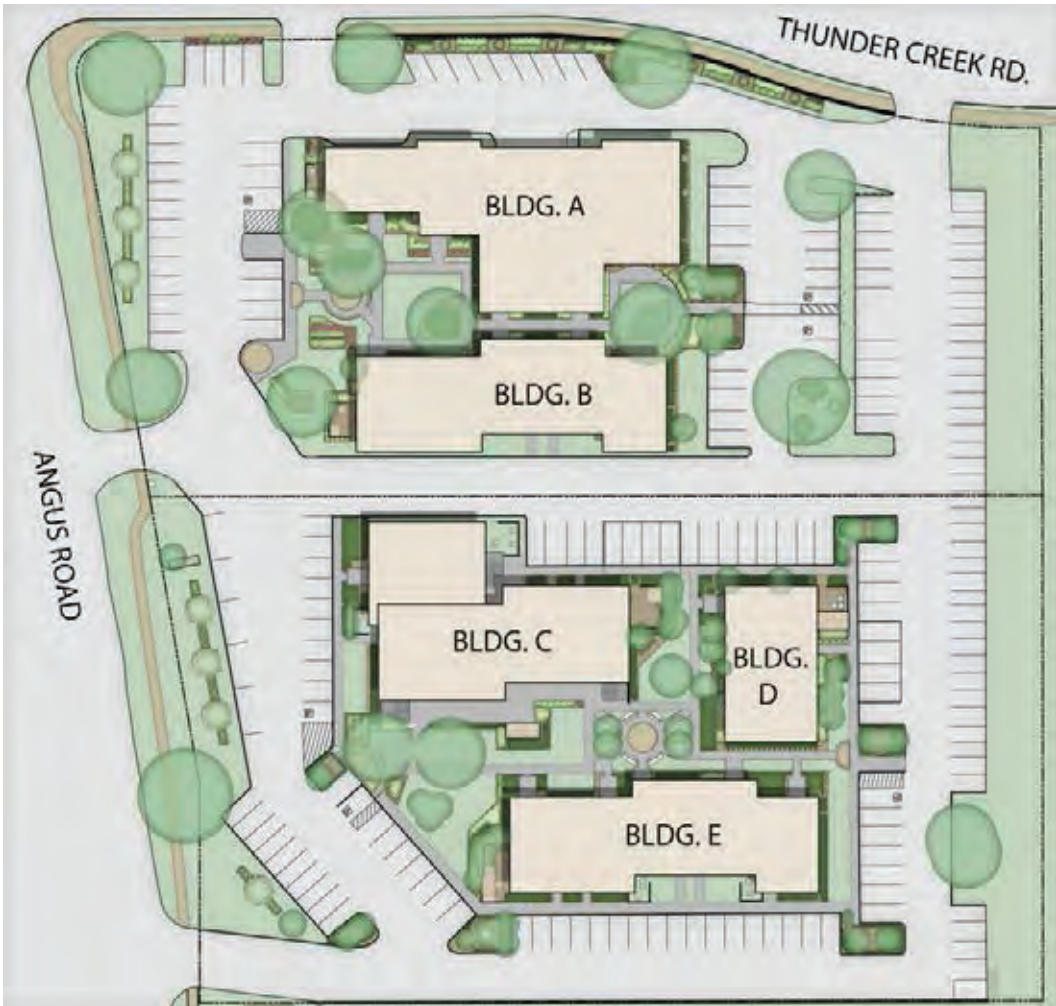
💰 LEASE TERMS

RATE: STARTING AT \$24/RSF + NNN (est. \$10.53/RSF)

TI: Negotiable

TERM: 2-10 yrs

SITE PLAN



LEASING INFORMATION

NICK TRIOLA
512.441.1062
nick@kpgcommercial.com

The information contained in this offering material ("Summary") is confidential, furnished solely for the purpose of the review by a prospective purchaser of the Property and is not to be used for any other purpose or made available to any other person without the express written consent of KPG Commercial, Broker. The material is based in part upon information supplied by the owner of the Property ("Owner") and in part upon information obtained by KPG Commercial, Broker from sources it deems reliable. Summaries of any documents are not intended to be comprehensive or all inclusive but rather only outlines of some of the provisions contained herein or as to engineering or environmental matters. Prospective purchasers should make their own projections and conclusions without reliance upon the material contained herein and conduct their own independent due diligence, including engineering and environmental inspections, to determine the condition of the property and the existence of any potentially hazardous material used in the construction or maintenance of the building or located on site.

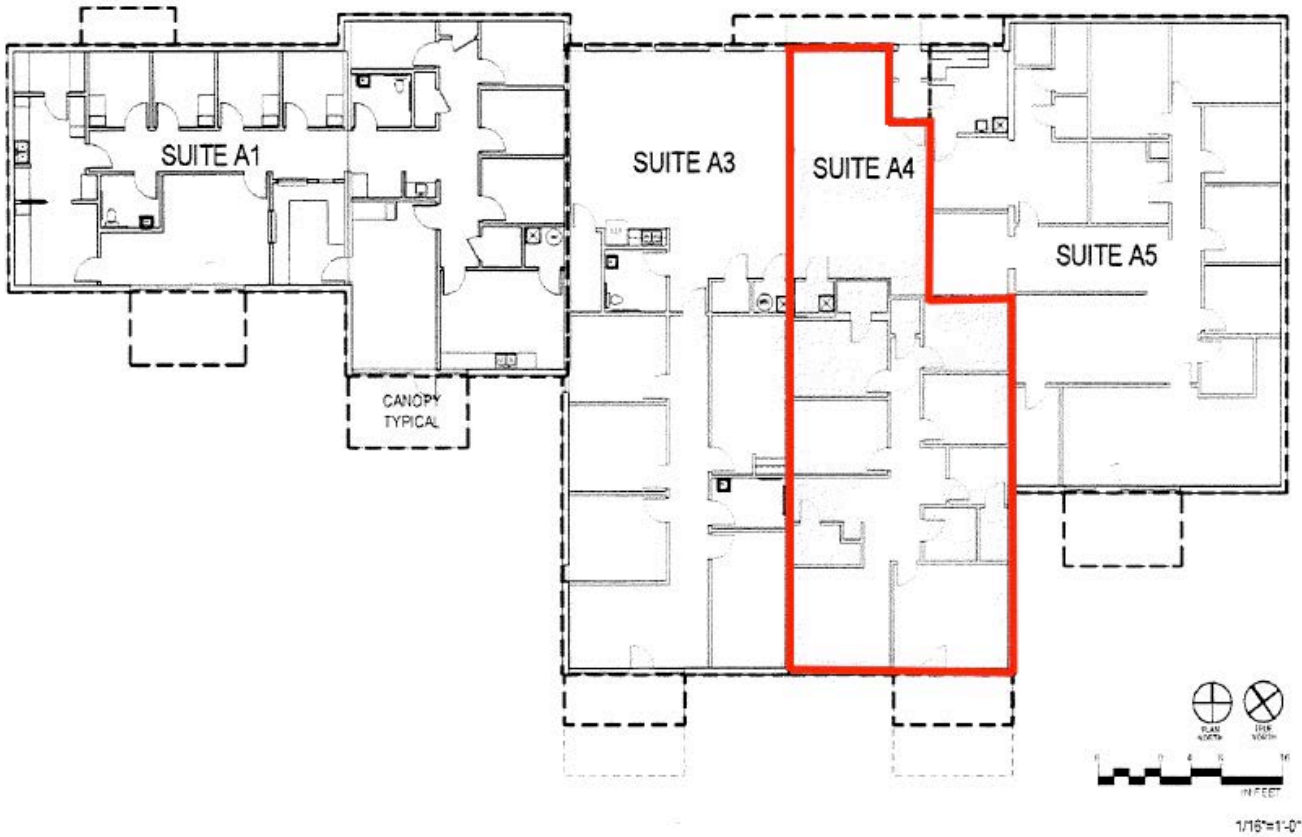
TWELVE OAKS

MEDICAL/OFFICE | LEASE

11623 & 11645 ANGUS RD, AUSTIN, TX 78757

FLOOR PLANS

BUILDING A



LEASING INFORMATION

NICK TRIOLA

512.441.1062

nick@kpgcommercial.com



The information contained in this offering material ("Summary") is confidential, furnished solely for the purpose of the review by a prospective purchaser of the Property and is not to be used for any other purpose or made available to any other person without the express written consent of KPG Commercial, Broker. The material is based in part upon information supplied by the owner of the Property ("Owner") and in part upon information obtained by KPG Commercial, Broker from sources it deems reliable. Summaries of any documents are not intended to be comprehensive or all inclusive but rather only outlines of some of the provisions contained herein or as to engineering or environmental matters. Prospective purchasers should make their own projections and conclusions without reliance upon the material contained herein and conduct their own independent due diligence, including engineering and environmental inspections, to determine the condition of the property and the existence of any potentially hazardous material used in the construction or of the building or located on site.

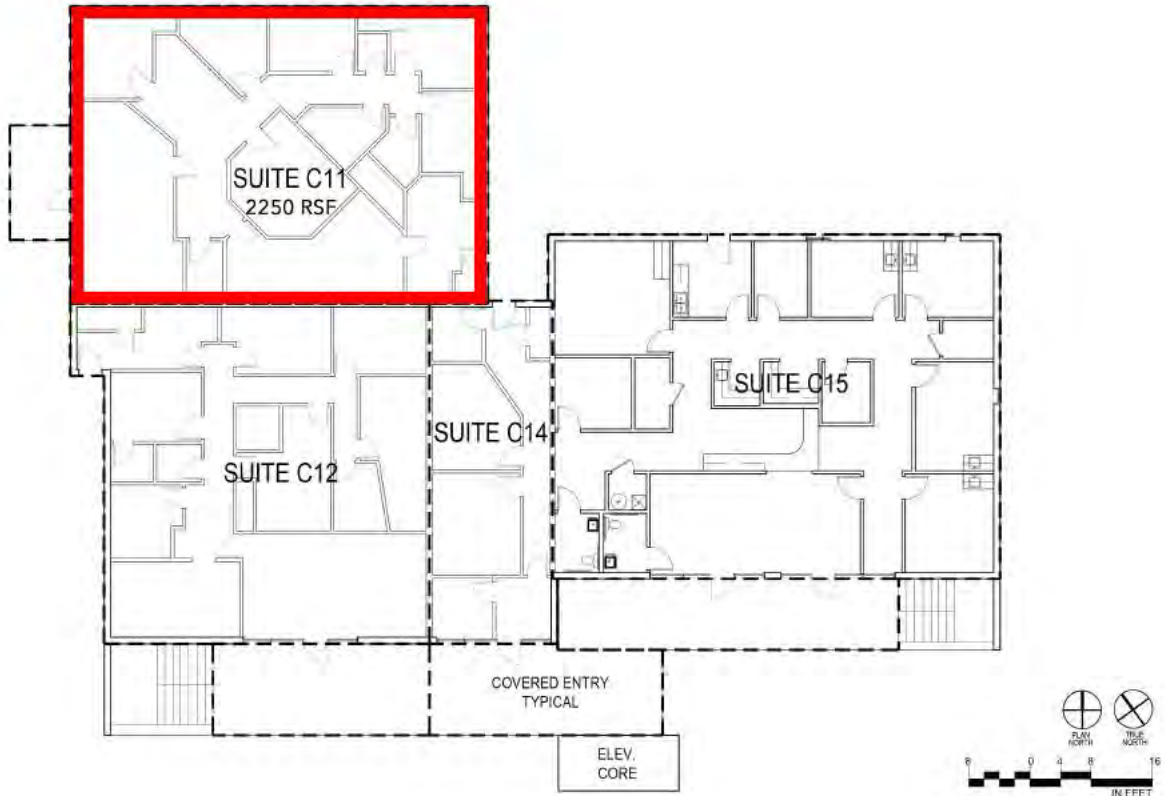
TWELVE OAKS

MEDICAL/OFFICE | LEASE

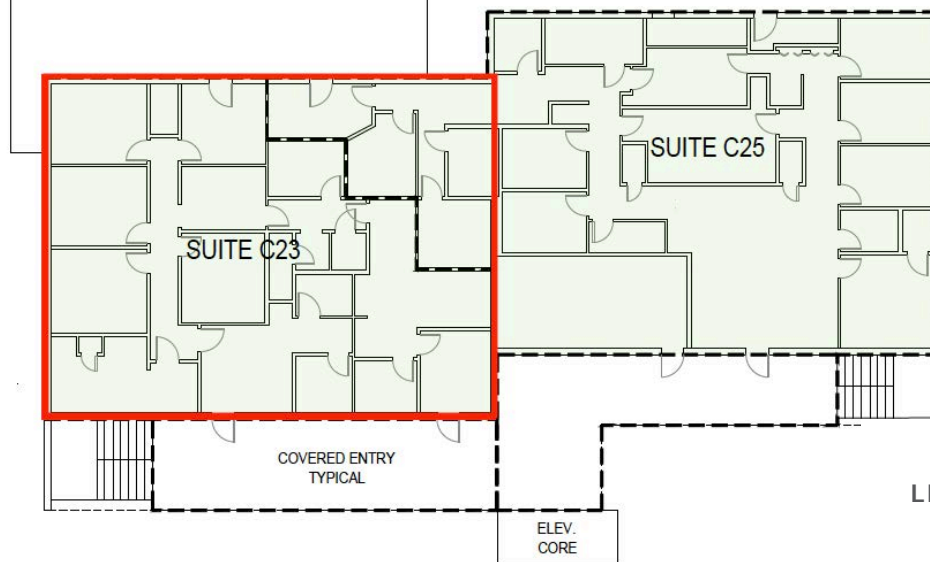
11623 & 11645 ANGUS RD, AUSTIN, TX 78757

FLOOR PLANS

BUILDING C, FLOOR 1



BUILDING C, FLOOR 2



LEASING INFORMATION

NICK TRIOLA

512.441.1062

nick@kpgcommercial.com

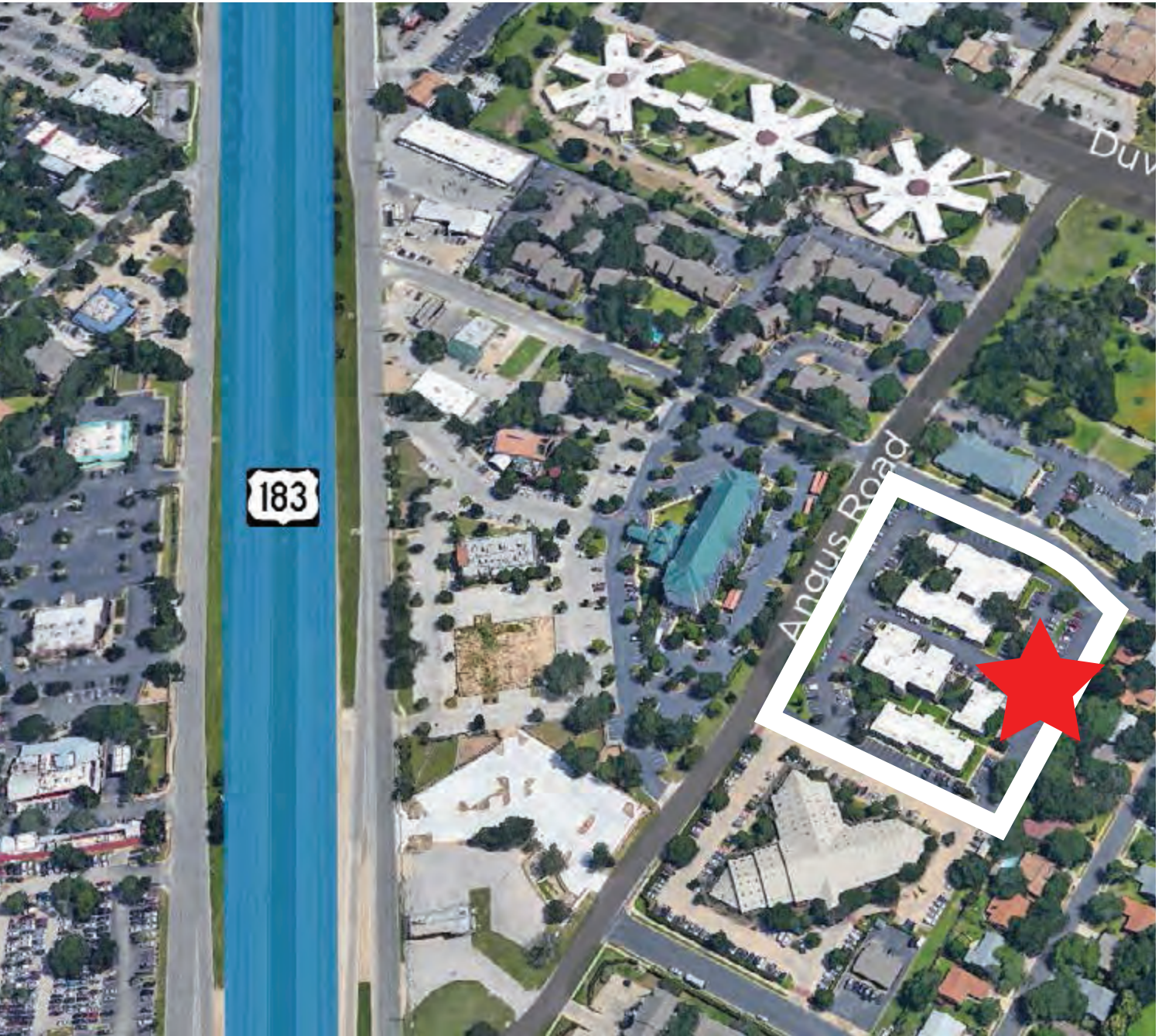


The information contained in this offering material ("Summary") is confidential, furnished solely for the purpose of the review by a prospective purchaser of the Property and is not to be used for any other purpose or made available to any other person without the express written consent of KPG Commercial, Broker. The material is based in part upon information supplied by the owner of the Property ("Owner") and in part upon information obtained by KPG Commercial, Broker from sources it deems reliable. Summaries are not intended to be comprehensive or all inclusive but rather only outlines of some of the provisions contained herein or as to engineering or environmental matters. Prospective purchasers should make their own projections and conclusions without reliance upon the material contained herein and conduct their own independent due diligence, including engineering and environmental inspections, to determine the condition of the property and the existence of any potentially hazardous material used in the construction or of the building or located on site.

TWELVE OAKS

MEDICAL/OFFICE | LEASE

11623 & 11645 ANGUS RD, AUSTIN, TX 78757



LOCATION



LEASING INFORMATION

NICK TRIOLA

512.441.1062

nick@kpgcommercial.com

The information contained in this offering material ("Summary") is confidential, furnished solely for the purpose of the review by a prospective purchaser of the Property and is not to be used for any other purpose or made available to any other person without the express written consent of KPG Commercial, Broker. The material is based in part upon information supplied by the owner of the Property ("Owner") and in part upon information obtained by KPG Commercial, Broker from sources it deems reliable. Summaries of any documents are not intended to be comprehensive or all inclusive but rather only outlines of some of the provisions contained herein or as to engineering or environmental matters. Prospective purchasers should make their own projections and conclusions without reliance upon the material contained herein and conduct their own independent due diligence, including engineering and environmental inspections, to determine the condition of the property and the existence of any potentially hazardous material used in the construction or of the building or located on site.

TWELVE OAKS

MEDICAL/OFFICE | LEASE

11623 & 11645 ANGUS RD, AUSTIN, TX 78757

PHOTOS



LEASING INFORMATION

NICK TRIOLA

512.441.1062

nick@kpgcommercial.com

The information contained in this offering material ("Summary") is confidential, furnished solely for the purpose of the review by a prospective purchaser of the Property and is not to be used for any other purpose or made available to any other person without the express written consent of KPG Commercial, Broker. The material is based in part upon information supplied by the owner of the Property ("Owner") and in part upon information obtained by KPG Commercial, Broker from sources it deems reliable. Summaries of any documents are not intended to be comprehensive or all inclusive but rather only outlines of some of the provisions contained herein or as to engineering or environmental matters. Prospective purchasers should make their own projections and conclusions without reliance upon the material contained herein and conduct their own independent due diligence, including engineering and environmental inspections, to determine the condition of the property and the existence of any potentially hazardous material used in the construction or of the building or located on site.