



Retail for Lease

Beaver I-15 Pad

Contact:

Kelsie Bowler, MRED
Retail Specialist
+1 801 947 8353
kelsie.bowler@colliers.com

Colliers
6440 S. Millrock Dr., Suite 500
Salt Lake City, UT 84121
Main: +1 801 947 8300
colliers.com

1532 South Main Street | Beaver, UT 84713

Property Information

- Up to 3,100 SF with drive thrus available
- Excellent exposure along I-15
- Easy access to/from I-15
- Surrounding Tenants:



DEMOGRAPHICS	3 MILE	5 MILE	10 MILE
Population			
2024 Estimated	3,586	4,295	4,641
2029 Projected	3,692	4,425	4,784
Households			
2024 Estimated	1,122	1,365	1,468
2029 Projected	1,154	1,404	1,509
Income			
2024 Median HHI	\$78,427	\$79,222	\$79,683
2024 Average HHI	\$88,700	\$89,077	\$89,145

Information provided by ESRI Business Analyst

Retail | For Lease

Site Plan

Colliers



Comfort



FAST STOP



3,100 SF

Beaver Dog Park

MAIN ST 4,000 ADT

EXIT 109

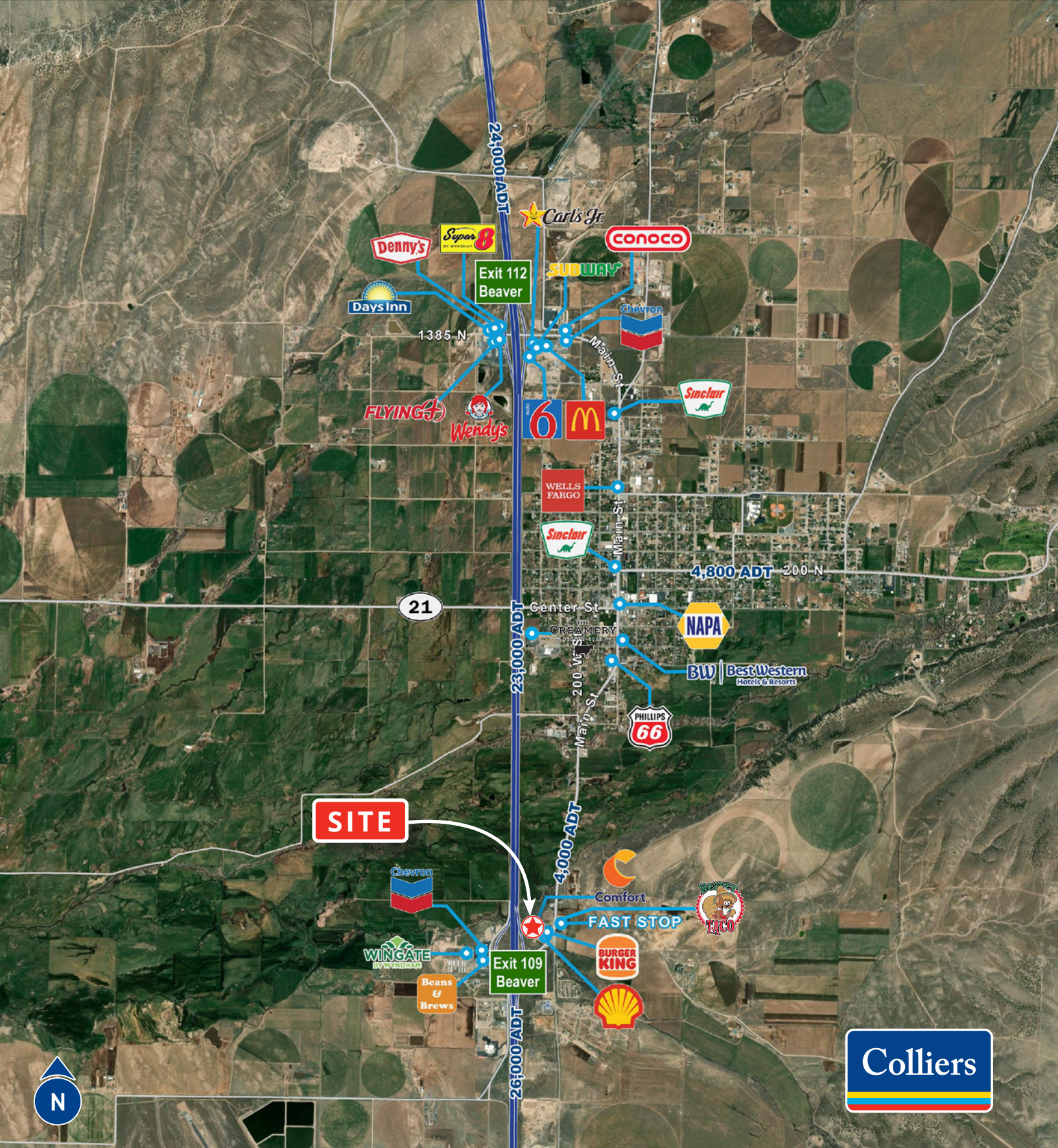


This document has been prepared by Colliers International for advertising and general information only. Colliers International makes no guarantees, representations or warranties of any kind, expressed or implied, regarding the information including, but not limited to, warranties of content, accuracy and reliability. Any interested party should undertake their own inquiries as to the accuracy of the information. Colliers International excludes unequivocally all inferred or implied terms, conditions and warranties arising out of this document and excludes all liability for loss and damages arising there from. This publication is the copyrighted property of Colliers International and/or its licensor(s). ©2025. All rights reserved.

Retail | For Lease

Property Photos





Contact:

Kelsie Bowler, MRED
 Retail Specialist
 +1 801 947 8353
 kelsie.bowler@colliers.com

Colliers

6440 S. Millrock Dr., Suite 500
 Salt Lake City, UT 84121
 Main: +1 801 947 8300
 colliers.com