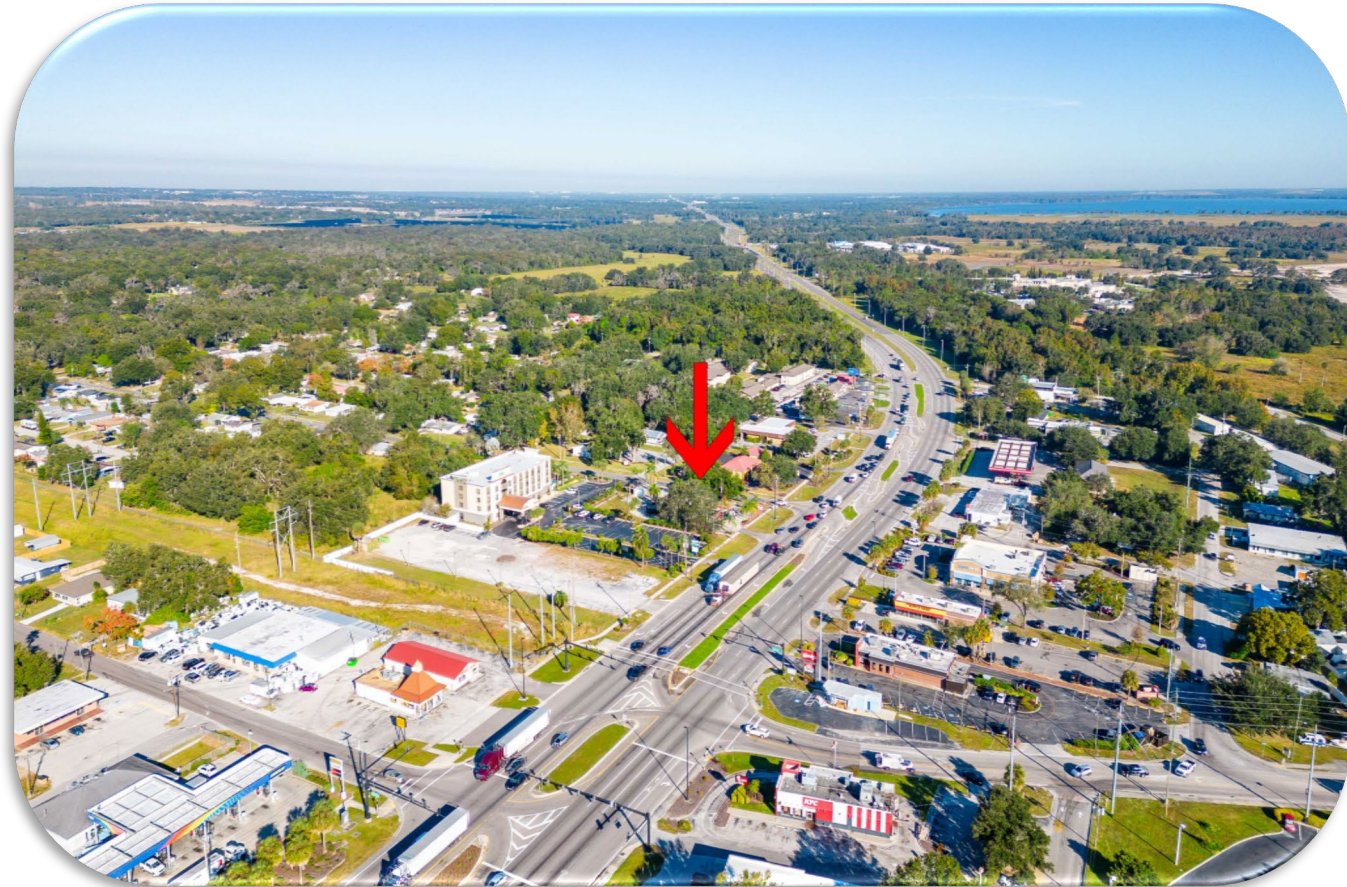




Drive-Thru Restaurant Building

1595 N Broadway Ave
Bartow, Florida 33830





Drive-Thru Restaurant Building

1595 N Broadway Ave
Bartow, Florida 33830



Details:

Bldg Size: 704 sf
Land: .56 Acre Corner Parcel
Parking: 20 spaces (1 Handicapped)
Access: Two Roads
Utilities: Water and Sewer Connected
Frontage: 120' on US Hwy 98
Patio: 10 tables, 40 total Seats
Misc: 750 Gallon Grease Trap
Monument Signage

Property Description:

LOCATION LOCATION LOCATION! Drive-thru Restaurant Building on a corner lot in Bartow, Florida. Property consists of .56 acres with on-site retention. Currently operating As a Checker Drive-In Restaurant but can be sold UNBRANDED. 41,000 AADT on US Hwy 98 surrounded by other Major Retailers Starbucks, Wendy's, Dairy Queen, Holiday INN Express, McDonalds, KFC, Burger King, Racetrac, Ruby Tuesday and many more. 120' of frontage on US Hwy 98 and 215' of frontage along Lucille Street. Sale includes all existing restaurant equipment for a turn-key rebranded restaurant including 10 outdoor tables with umbrellas for seating of 40 guests.

FOR SALE

Drive-Thru Restaurant Building

.56 Acre Corner Lot

1595 N Broadway Ave
Bartow, Florida 33830





DEMOGRAPHIC SUMMARY

1595 N Broadway Ave, Bartow, Florida, 33830

Drive time of 10 minutes

KEY FACTS

32,898

Population



12,074

Households

38.3

Median Age

\$54,907

Median Disposable Income

EDUCATION

8.4%

No High School Diploma



36.2%

High School Graduate



28.3%

Some College/
Associate's Degree



27.0%

Bachelor's/Grad/
Prof Degree

INCOME



\$64,905

Median Household Income



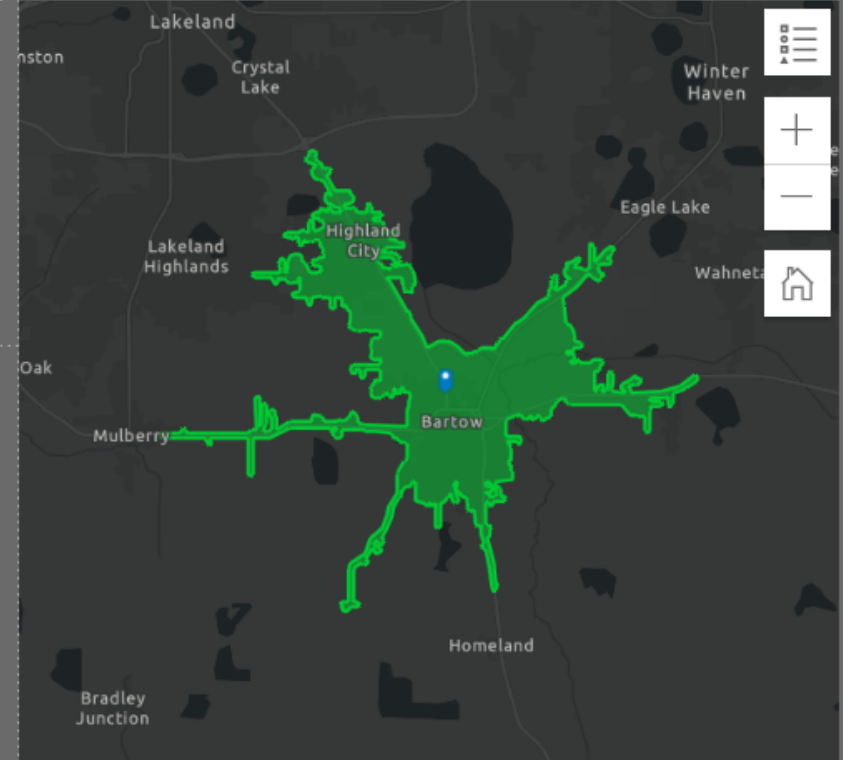
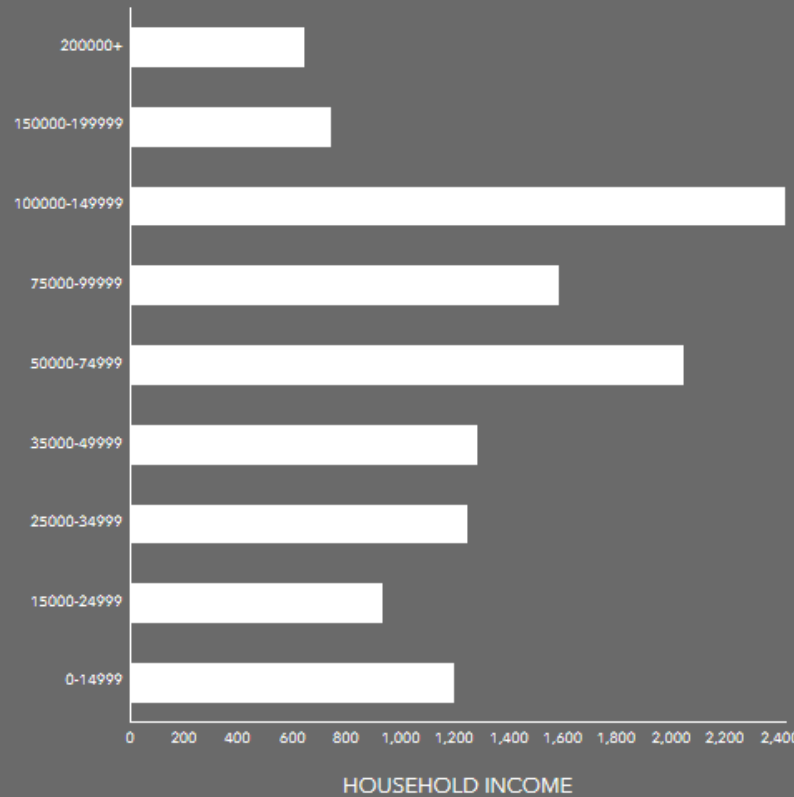
\$31,755

Per Capita Income



\$120,296

Median Net Worth



EMPLOYMENT



59.3%

White Collar



25.7%

Blue Collar



17.6%

Services

2.6%

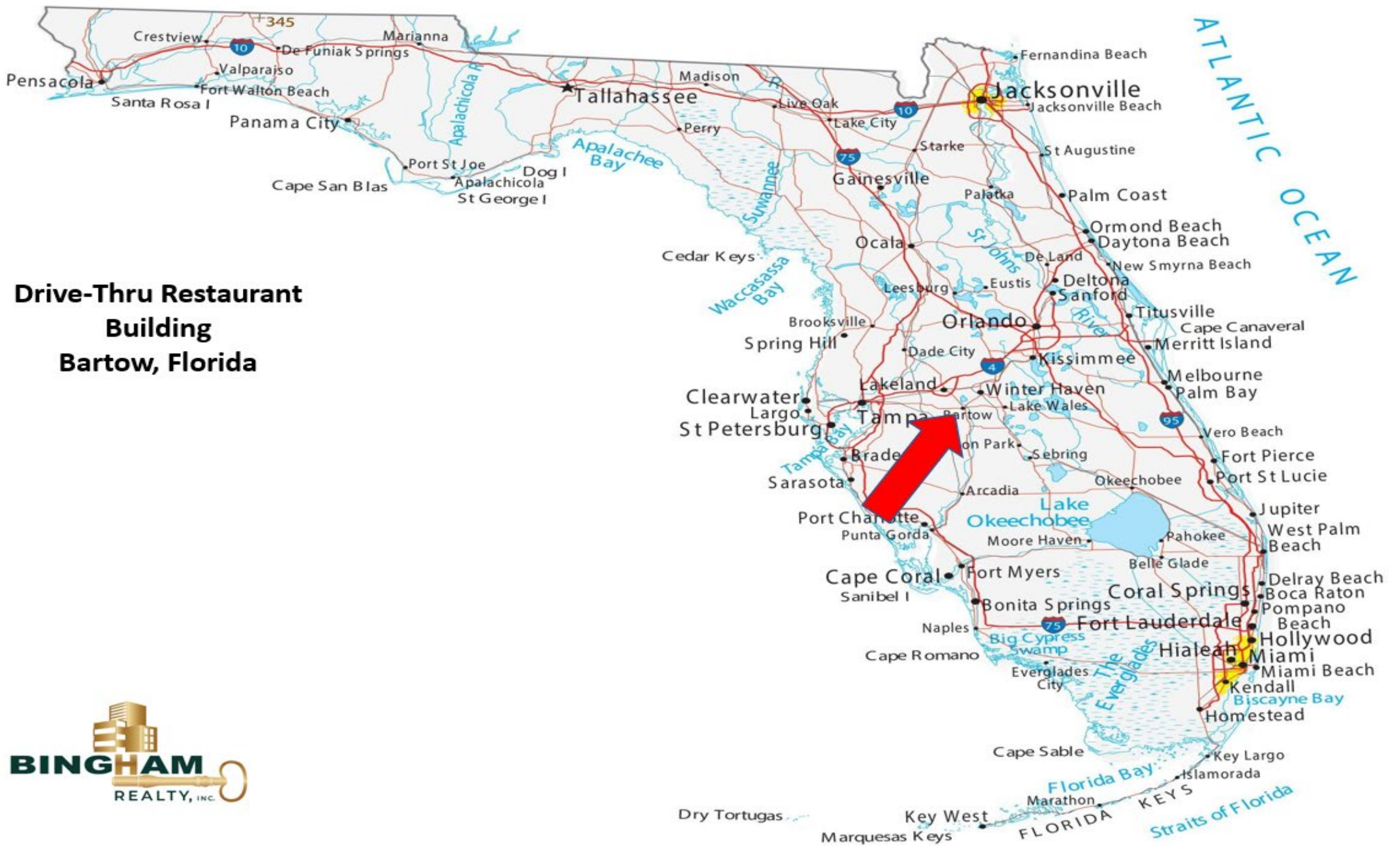
Unemployment Rate

Source: This infographic contains data provided by Esri (2023, 2028). © 2023 Esri

BINGHAM REALTY, INC. 813-788-2759

WILL BINGHAM 813-713-3974

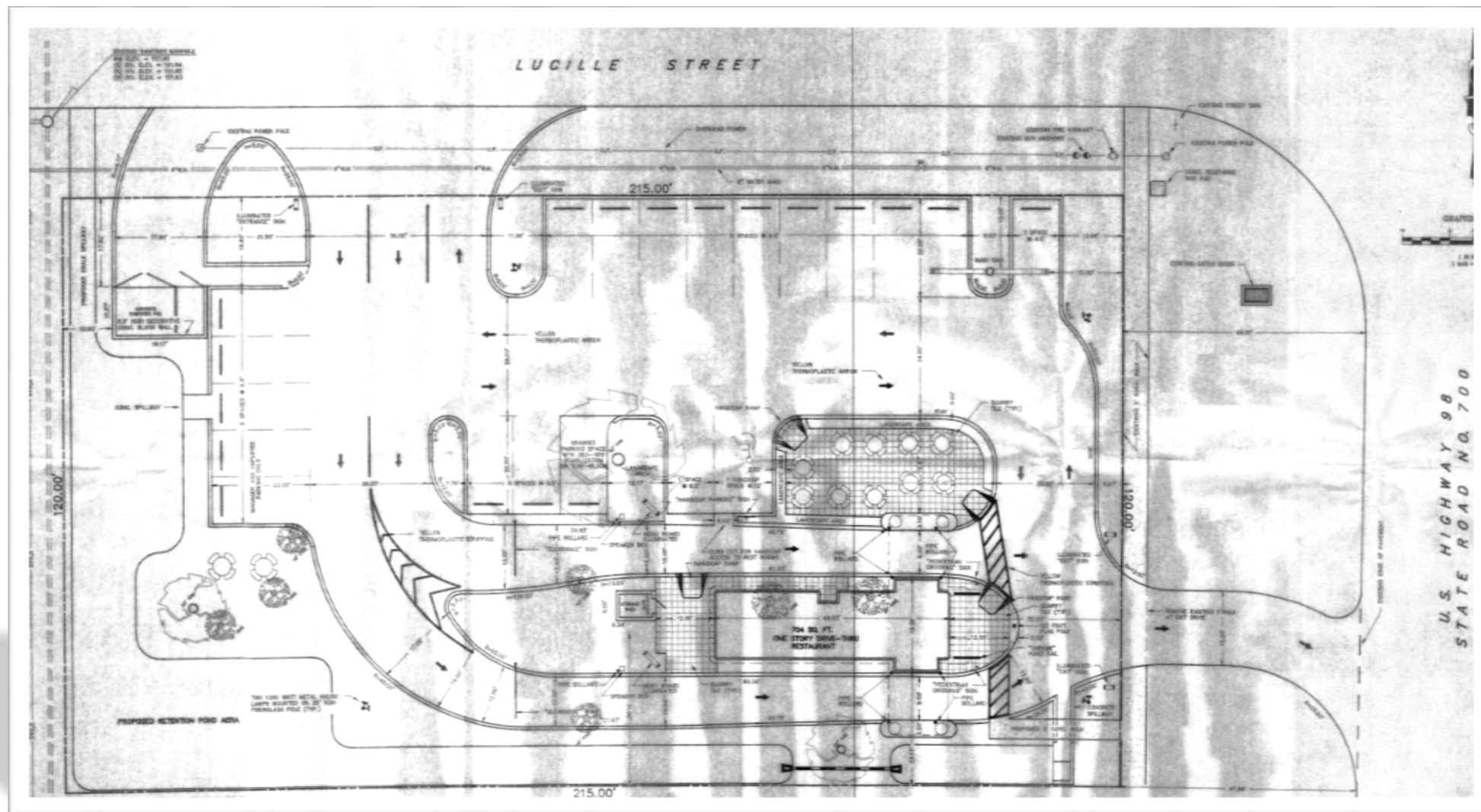
will@binghamrealtyinc.com



**Drive-Thru Restaurant
Building
Bartow, Florida**



SITE PLAN





Meet Will Bingham: Your Trusted Commercial Real Estate Expert



With an impressive legacy spanning two decades in the Commercial Real Estate industry, Will Bingham stands as a distinguished professional known for his unparalleled expertise, unwavering integrity, and exceptional client dedication. As the President of Bingham Realty, Inc., a revered Florida Real Estate Corporation with a rich 50-year history of serving Pasco County, Will has solidified his reputation as a leading force in the field.

Professional Expertise: For the past 20 years, Will has honed his skills and expertise in Commercial Real Estate sales and management, specializing in NNN (Triple Net Lease) properties. His keen insight and deep understanding of the market have enabled him to guide clients through complex transactions, making him a go-to expert for investors and businesses alike.

Client-Centric Approach: At the heart of Will's success is his unwavering commitment to his clients. He prioritizes their best interests above all else, ensuring that each transaction is meticulously handled with professionalism, transparency, and utmost care. Will's reputation as an excellent negotiator stems from his dedication to securing the most advantageous deals for his clients, fostering long-lasting relationships built on trust and satisfaction.

Leadership and Vision: In his role as President of Bingham Realty, Inc., Will oversees a team of seasoned professionals, steering the company with visionary leadership and a commitment to excellence. Under his guidance, the firm has become a trusted partner in the development of new retail properties for renowned national tenants, including Dollar Tree, Dunkin Donuts, Family Dollar, Dominos, Subway, and many more. Will's ability to identify lucrative opportunities and execute successful ventures has positioned Bingham Realty, Inc. as an industry leader.

A Rich Career Journey: Will Bingham's journey in the real estate world commenced in 2002 when he served as a Commercial Property Manager. In this role, he managed over 1,000,000 square feet of retail space spread across nine distinct shopping centers in Florida. His impressive portfolio included renowned tenants such as Wal-Mart, Home Depot, Winn-Dixie, Publix, SweetBay, Beef O Brady's, Payless Shoes, Radio Shack, and Blockbuster, among others. This extensive experience equipped him with invaluable insights into property management and tenant relationships, further enhancing his prowess in the industry. With a remarkable blend of experience, expertise, and a client-centric approach, Will Bingham continues to shape the Commercial Real Estate landscape. His dedication to excellence, combined with his passion for fostering successful real estate ventures, makes him the ideal partner for all your commercial property needs. Whether you are a seasoned investor or a budding entrepreneur, Will is here to guide you toward unparalleled success in the dynamic world of Commercial Real Estate.