

REVISIONS

LOTS 1-84 75-79 CONS'D PER APP. 7/27/79 PER P.L.S. CSH 92
 LOTS 65-72/79, 117, DIM CHANGE & LOTS 114/115/116 CONS'D PER APP. CSH 81-167 & 168
 LOTS 50 & 72/80 PER. P.L.S. CSH 84-382
 LOTS 51 & 52 CONS'D PER A.O. CSH 88-588
 LOT 14/17 S. DIV. PER S.D. & P.L.S. CSH 88-102
 LOTS 1/8 THRU 15 & 18 DIM. & SET BACK PER P.L.S.

ST.

905

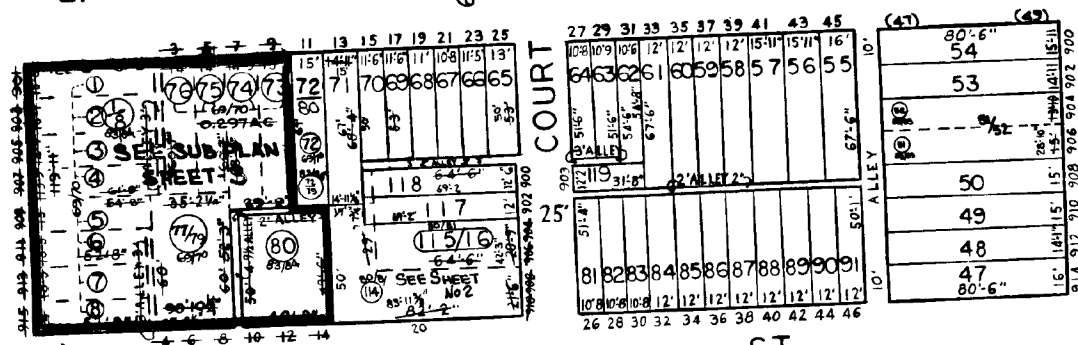
ST.

E. HENRIETTA

60'

ST.

60'



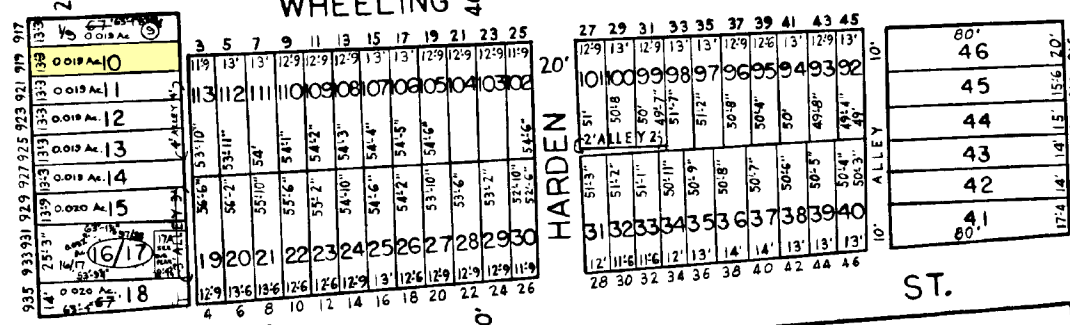
COURT

WHEELING

ST.

S. CHARLES

917



E. HAMBURG

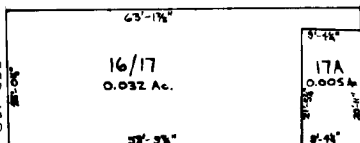
30'

PATASCO ST.

S. CHARLES ST.

934-A

934-B



SUB-PLAN

SHEETS IN SET 8
 SHEET NO. 1

NOTICE

THIS IS A REAL PROPERTY PLAT AS PROVIDED FOR UNDER ARTICLE 76(d) OF THE CITY CHARTER IT IS COMPILED FROM TITLE AND OTHER SOURCES AND IS NOT AN AUTHENTIC SURVEY.

CITY OF BALTIMORE
 DEPARTMENT OF PUBLIC WORKS

PROPERTY LOCATION DIVISION

WARD 23 SECTION 1
 BLOCK 918

SCALE 1" = 50'-0" DATE FEB. 1967.

TRACED BY L. DUBECK
 LETTERED BY L.D.
 CHECKED BY