

WHITEROCK BUILDING

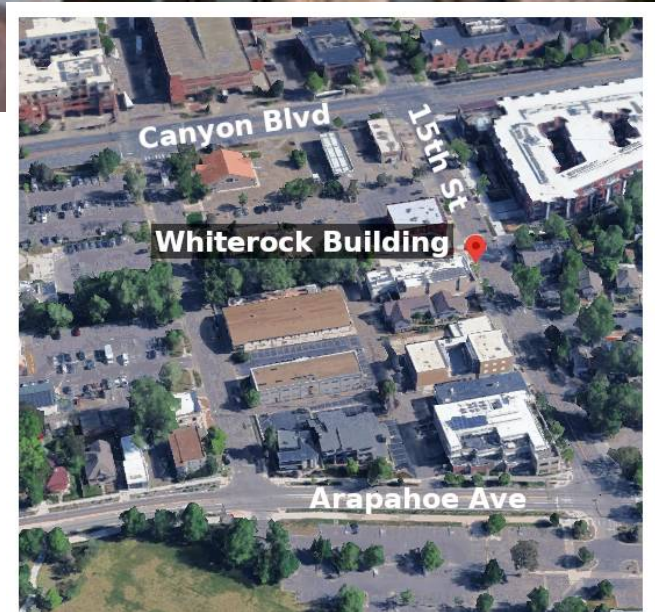
1731 15th Street, Boulder, Co, 80303



Downtown Boulder Office Space for Lease

Modern Sopher Sparn designed building with high ceilings and natural light in the Architectural District. Centrally located on the Boulder Creek Bike Path with easy access to numerous amenities including restaurants, retailers, bus station, Pearl Street and Farmer's Market.

- Easily divisible spaces.
- Excellent visibility with high foot traffic.
- RTD Eco-Passes are available free to full time Employees.

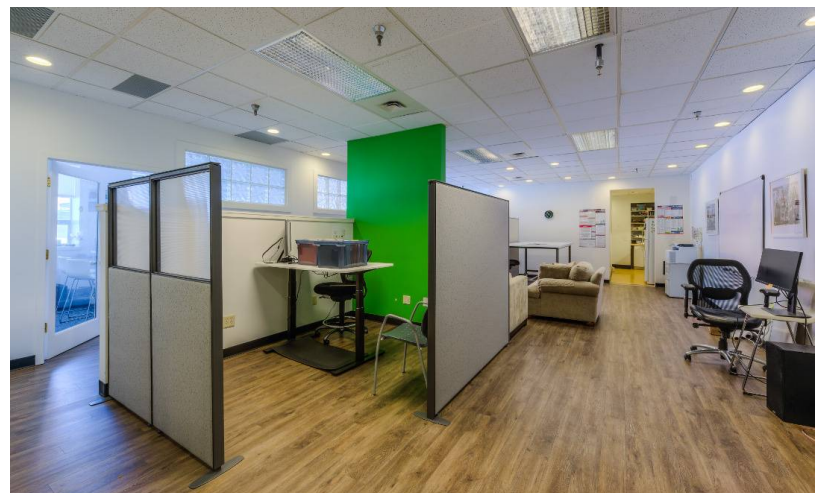


Whiterock Building
1731 15th Street Boulder



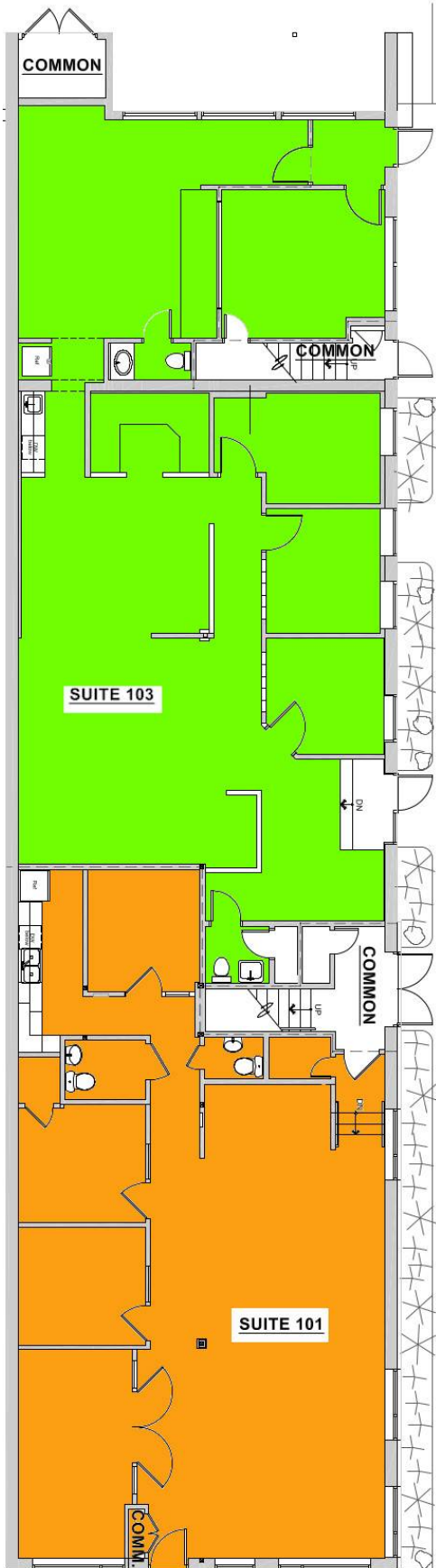
Total space 8309 sq/ft - \$12.50 sq/ft

- Suite 101 - 1,979 sq/ft
 - Suite 103 - 2,498 sq/ft
 - Suite 105 - 788 sq/ft
 - Suite 200 - 1,196 sq/ft
 - Suite 220 - 1,576 sq/ft
 - Suite 250 - 1,060 sq/ft
-
- High ceilings, skylights and abundant natural light.
 - Easily divisible spaces with private closed door offices, open bullpen, conference rooms, and kitchen.
 - Located in art district with high foot traffic.
 - Two story modern office building
 - Downtown Boulder location; within 2 blocks of Pearl Street, farmer's market, Boulder Creek bike bath.
 - Three on site parking spaces additional 30 parking passes in City of Boulder lot at 1745 14th Street.
 - NNN includes CAM, taxes and insurance and all utilities included gas, electric, and water.

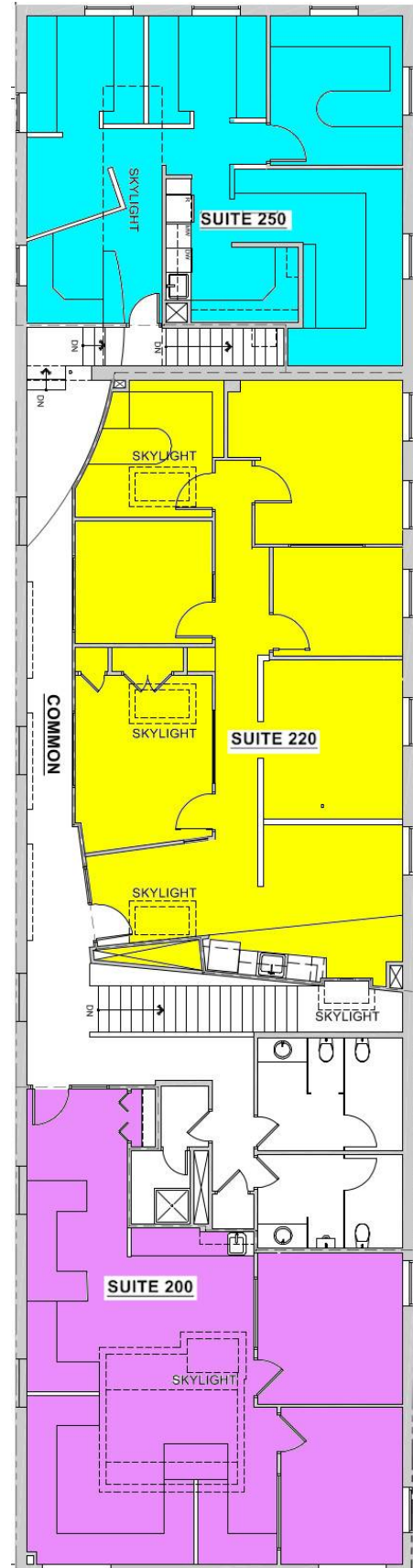




Floor 1



Floor 2



Whiterock Building
1731 15th Street Boulder

