

# SPACE FOR LEASE

## WEST TOWERS OFFICE SPACE

1200 VALLEY WEST DR | WEST DES MOINES



**ALEC WILCOX, CCIM**  
Vice President  
+1 515 210 9446  
awilcox@iowaca.com

**MATT LUNDBERG, SIOR, CCIM**  
Senior Vice President  
+1 515 556 8088  
mlundberg@iowaca.com



**CUSHMAN &  
WAKEFIELD**

Iowa Commercial Advisors

3737 Woodland Avenue, Suite 100  
West Des Moines, IA 50266  
Main +1 515 309 4002  
[iowacommercialadvisors.com](http://iowacommercialadvisors.com)

*Independently Owned and Operated / A Member of the Cushman & Wakefield Alliance*



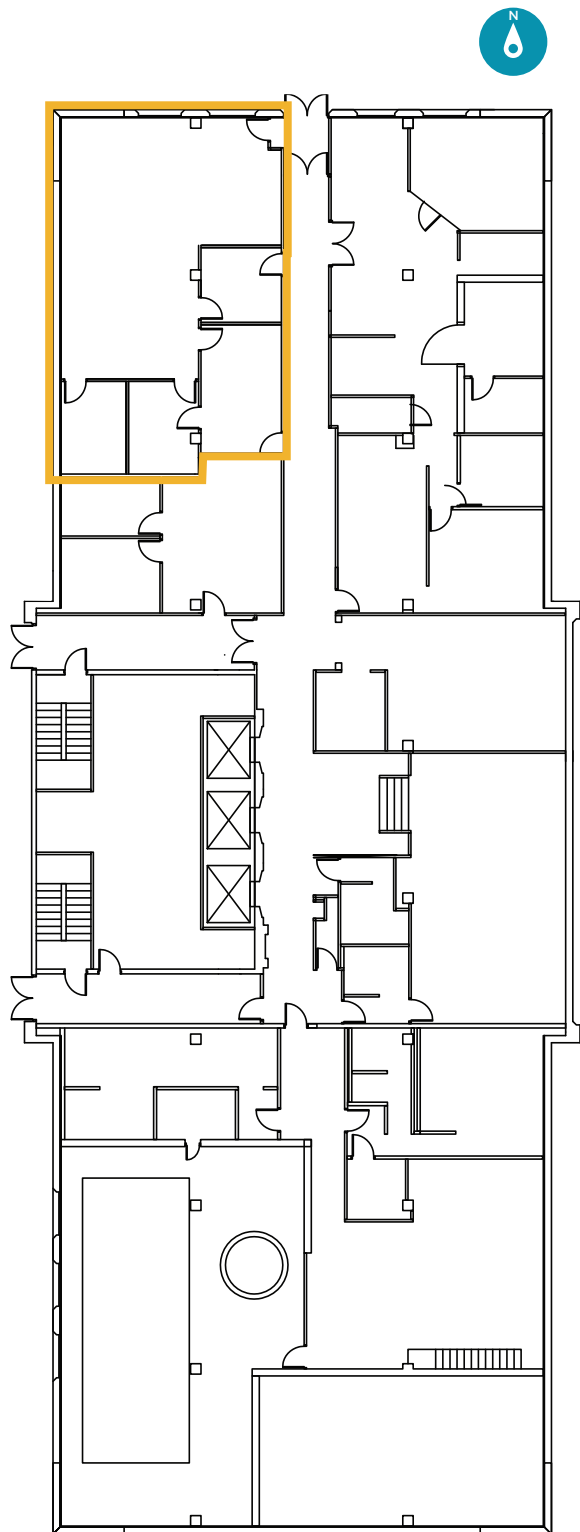
# PROPERTY HIGHLIGHTS

- Ideal location on Valley West Drive right off I-235
- Modern move-in ready suites available
- Building signage available
- Common area conference room
- On-site fitness center with showers and locker rooms
- One-of-a-kind on-site racquetball court
- Ample on-site parking
- Key card access system

## AVAILABLE SPACE

Suite	Avail. SF	\$/SF
30	1,755 SF	\$14.00 FSG
503/505	2,833 SF	\$18.50 FSG
700	3,978 SF	\$18.50 FSG



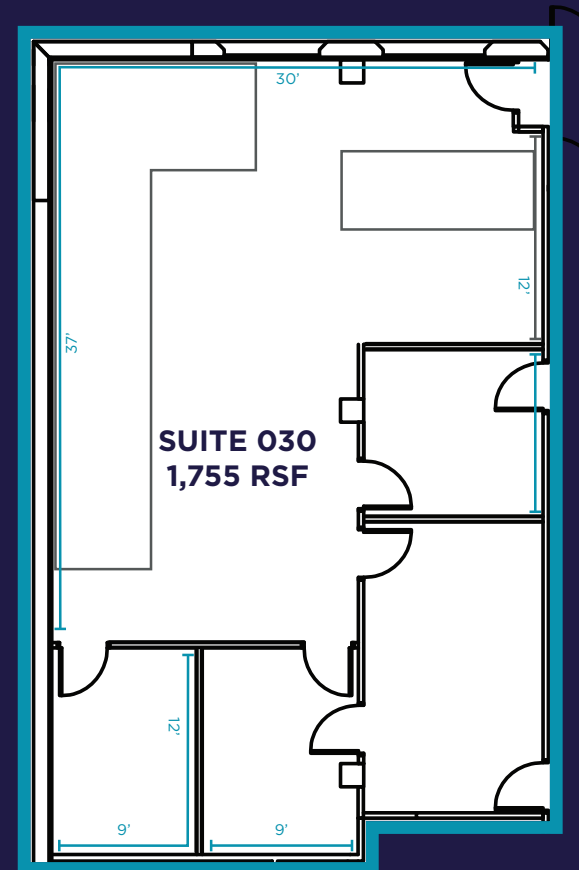


## SUITE 30

GROUND FLOOR

Available SF - 1,755

\$14.00, Full Service Gross

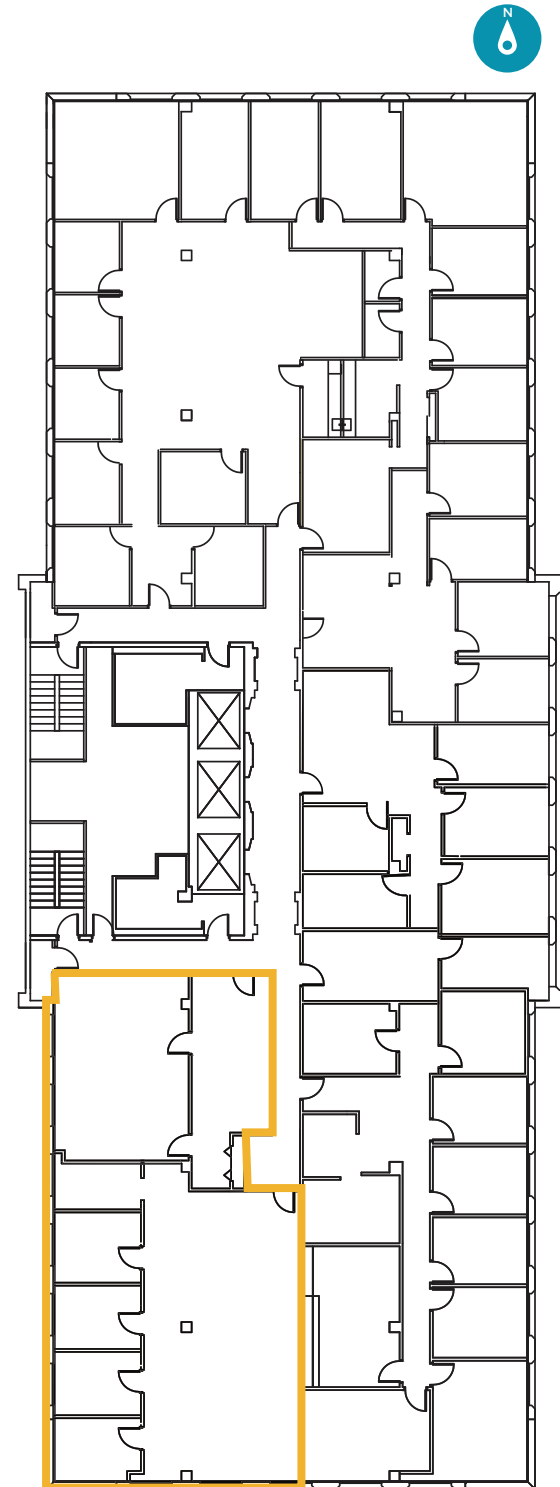
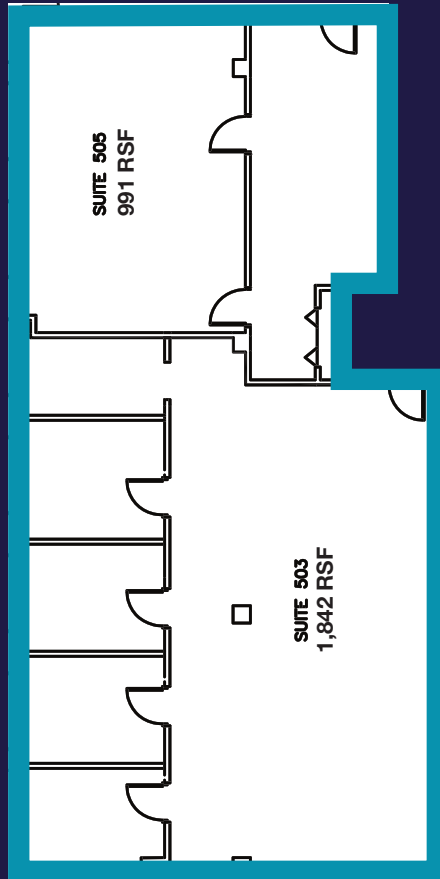


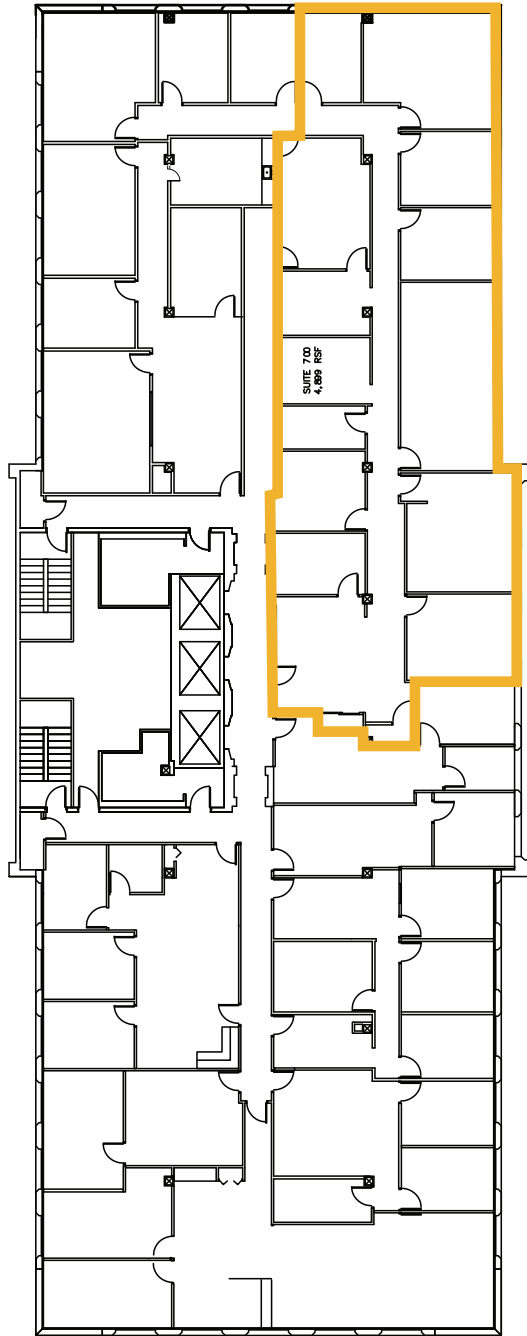
# SUITE 503/505

5TH FLOOR

Available SF - 2,833

\$18.50, Full Service Gross



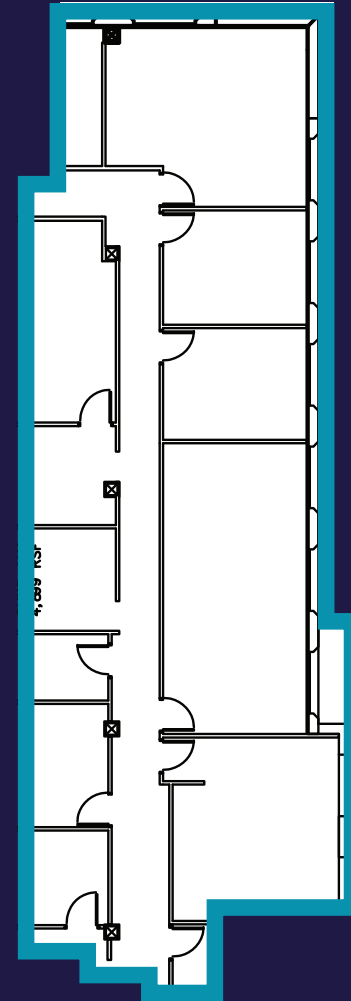


# SUITE 700

7TH FLOOR

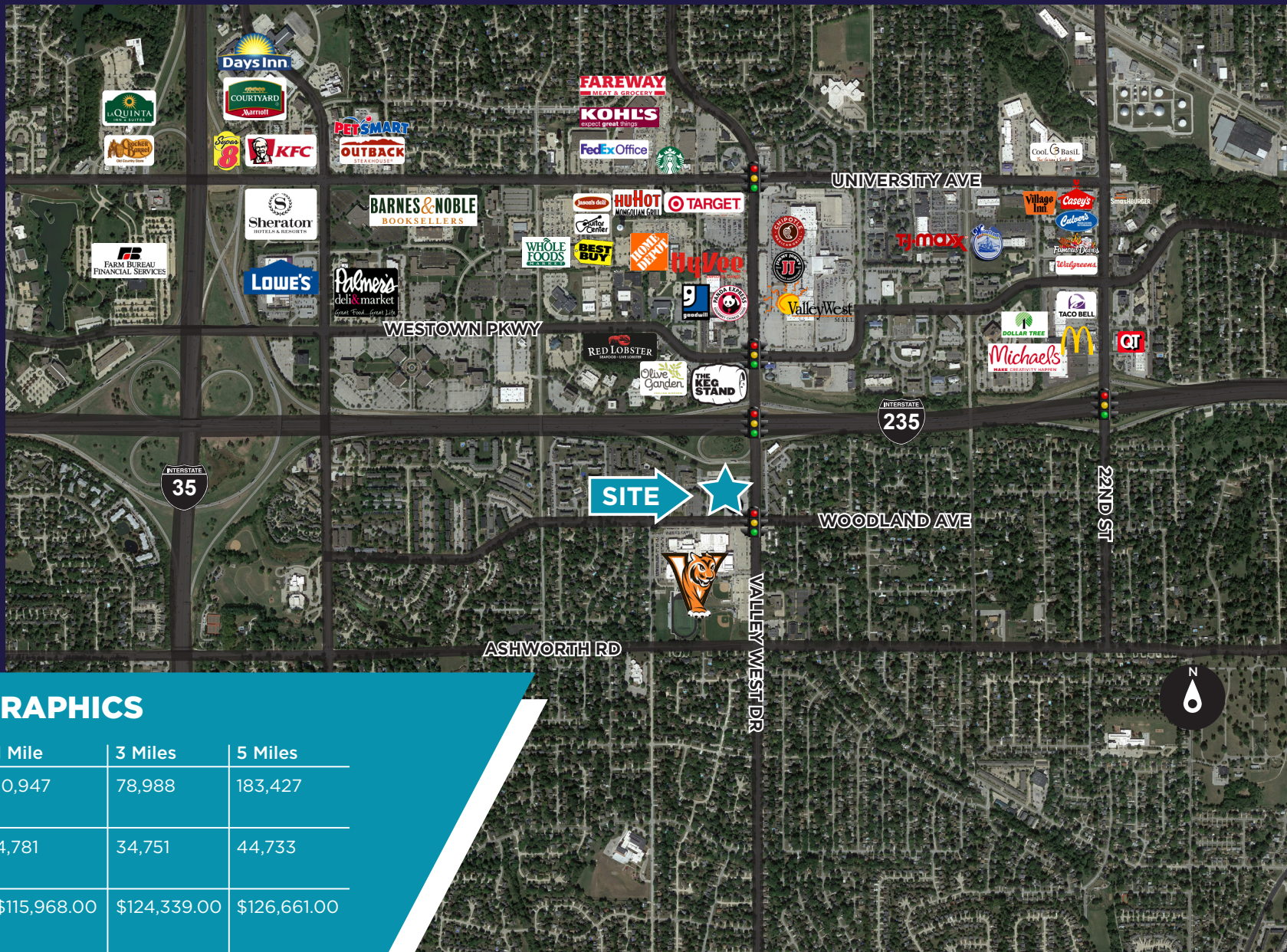
Available SF - 3,978

\$18.50, Full Service Gross





# MAP



## DEMOGRAPHICS

	1 Mile	3 Miles	5 Miles
Total Population	10,947	78,988	183,427
Total Households	4,781	34,751	44,733
Average Household Income	\$115,968.00	\$124,339.00	\$126,661.00
Daytime Population	16,870	113,151	211,687





CONTACTS:

**ALEC WILCOX, CCIM**

Vice President

+1 515 210 9446

[awilcox@iowaca.com](mailto:awilcox@iowaca.com)

**MATT LUNDBERG, SIOR, CCIM**

Senior Vice President

+1 515 556 8088

[mlundberg@iowaca.com](mailto:mlundberg@iowaca.com)



**CUSHMAN &  
WAKEFIELD**

Iowa Commercial Advisors

3737 Woodland Avenue, Suite 100

West Des Moines, IA 50266

Main +1 515 309 4002

[iowacommercialadvisors.com](http://iowacommercialadvisors.com)

*Independently Owned and Operated / A Member of the Cushman & Wakefield Alliance*

©2025 Cushman & Wakefield. All rights reserved. The information contained in this communication is strictly confidential. This information has been obtained from sources believed to be reliable but has not been verified. No warranty or representation, express or implied, is made as to the condition of the property (or properties) referenced herein or as to the accuracy or completeness of the information contained herein, and same is submitted subject to errors, omissions, change of price, rental or other conditions, withdrawal without notice, and to any special listing conditions imposed by the property owner(s). Any projections, opinions or estimates are subject to uncertainty and do not signify current or future property performance.