

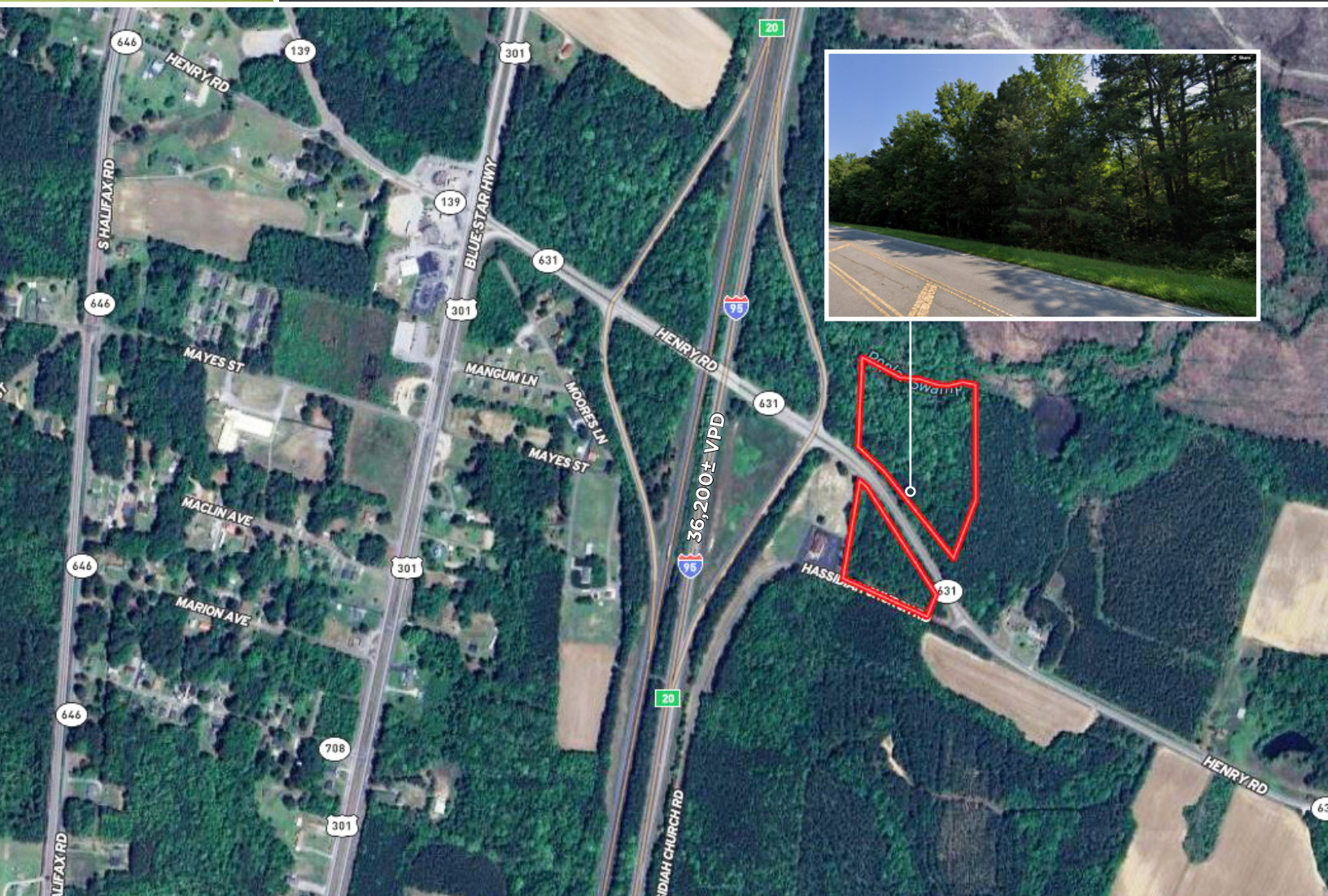
# FOR SALE

URBAN LAND

## Jarratt Interchange Development Property Henry Road | Jarratt, VA 23867



COMMONWEALTH  
COMMERCIAL  
Comprehensive Property Solutions



### PROPERTY HIGHLIGHTS

- › 7± acre parcel located just off I-95
- › Conveniently located between Richmond and Emporia
- › Zoned A-1
- › Potential to divide to (3) three, 2-acre lots
- › Homesite or commercial development possibilities
- › Property sits adjacent to Jarratt exit on Interstate
- › Traffic count: Interstate 95 - 36,200 VPD
- › Sale Price: \$175,000

#### FOR MORE INFORMATION:

##### SCOTT PITTMAN

Associate

804-228-4925

[spittman@commonwealthcommercial.com](mailto:spittman@commonwealthcommercial.com)

##### RYAN FANELLI

Senior Vice President, Partner

804-400-6163

[rfanelli@commonwealthcommercial.com](mailto:rfanelli@commonwealthcommercial.com)

Commonwealth Commercial Partners, LLC represents the Owner of this property. Information contained herein is deemed reliable but is not guaranteed.



# WETLANDS MAP



FOR SALE | 28412 SOUTHAMPTON PARKWAY | COURTLAND, VA 23837

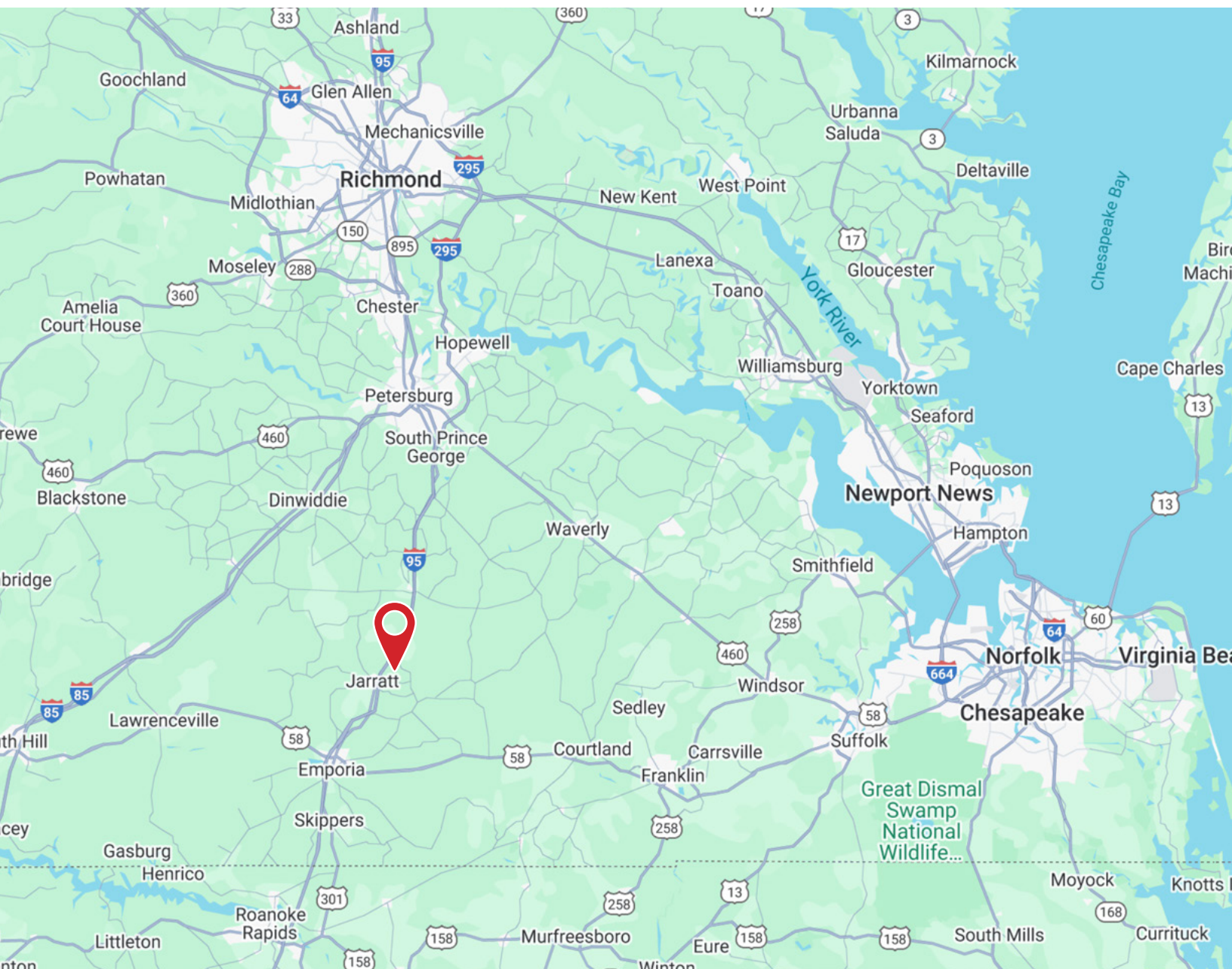


## LOCATION OVERVIEW



### EMPORIA (10 MILES SOUTH)

**Strategically located** with crossroads of Interstate 95 and U.S. Routes 58 and 301, Emporia is a rapidly emerging commerce and industry center. The city sees an average of 60,000 vehicles daily with an average daytime population of over 12,000.



FOR SALE | 28412 SOUTHAMPTON PARKWAY | COURTLAND, VA 23837



**COMMONWEALTH  
COMMERCIAL**  
Comprehensive Property Solutions