

COLUMBIA INDUSTRIAL PARK



FOR LEASE

*Excellent location just off NE Columbia Blvd and I-205
providing unparalleled access to Portland Metropolitan area*

6781 NE COLUMBIA BLVD, BUILDING 4, PORTLAND, OR

4,737 SF

BUILDING AREA

\$0.95/SF

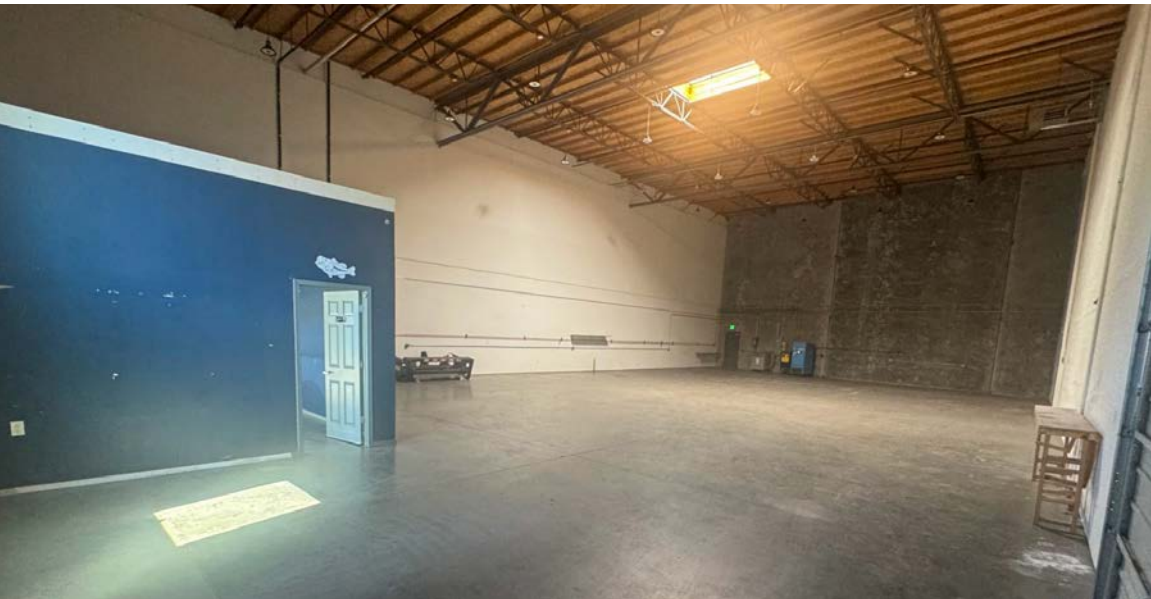
LEASE RATE (NNN)

*4,737 SF available for lease in
Columbia Industrial Park located
in Portland, OR*

PROPERTY OVERVIEW

UNIT SIZE	4,737 SF
OFFICE SIZE	300 SF with restroom
CONSTRUCTION	Concrete tilt
ENTRANCE	Glass entry with architectural steel awnings
CLEAR HEIGHT	24'
POWER	480 Volt, 3-Phase
ZONING	IG2, City of Portland
SPRINKLER	Wet fire protection - NPFA 13 compliant and ESFR ready
ACCESS	Excellent location just off NE Columbia Blvd and I-205 providing unparalleled access to Portland Metropolitan area
PARKING RATIO	1.15/1,000 PSF
AVAILABLE	Now
LEASE RATE	\$0.95/SF, NNN

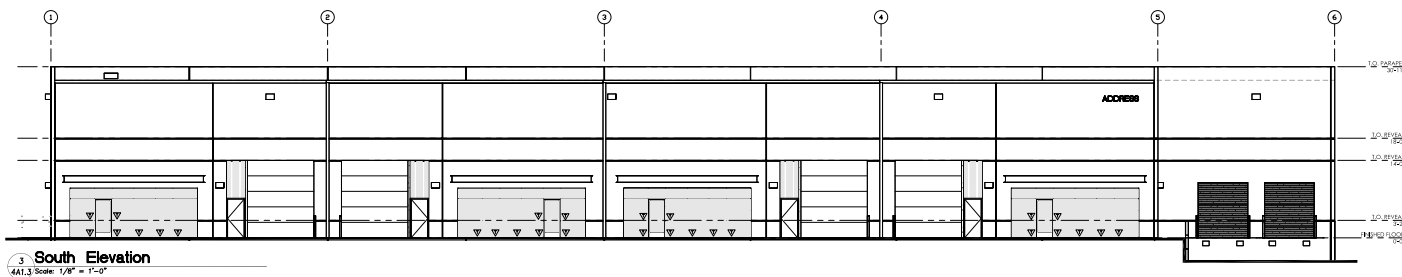




AVAILABLE SF

LEASE RATE (NNN)

AVAILABLE





For more information, contact

ZACH FRANCIS
503.221.2290
zach.francis@kidder.com

KARLA HANSEN
503.721.2727
karla.hansen@kidder.com

CHRIS DOWHANIUK
503.789.5308
chris.dowhaniuk@kidder.com

KIDDER.COM

This information supplied herein is from sources we deem reliable. It is provided without any representation, warranty, or guarantee, expressed or implied as to its accuracy. Prospective Buyer or Tenant should conduct an independent investigation and verification of all matters deemed to be material, including, but not limited to, statements of income and expenses. Consult your attorney, accountant, or other professional advisor. All Kidder Mathews designs are the sole property of Kidder Mathews. Branded materials and layouts are not authorized for use by any other firm or person.

