

THE BUSINESS PARK OF SAINT ANDREWS

1401, 1404, 1410 St. Andrews Road
Columbia, South Carolina



FOR LEASE

±31,519 SF Flex property

Available:

- Suite 120
- Suite 160/170
- Suite 250
- Suite 260
- Suite 320

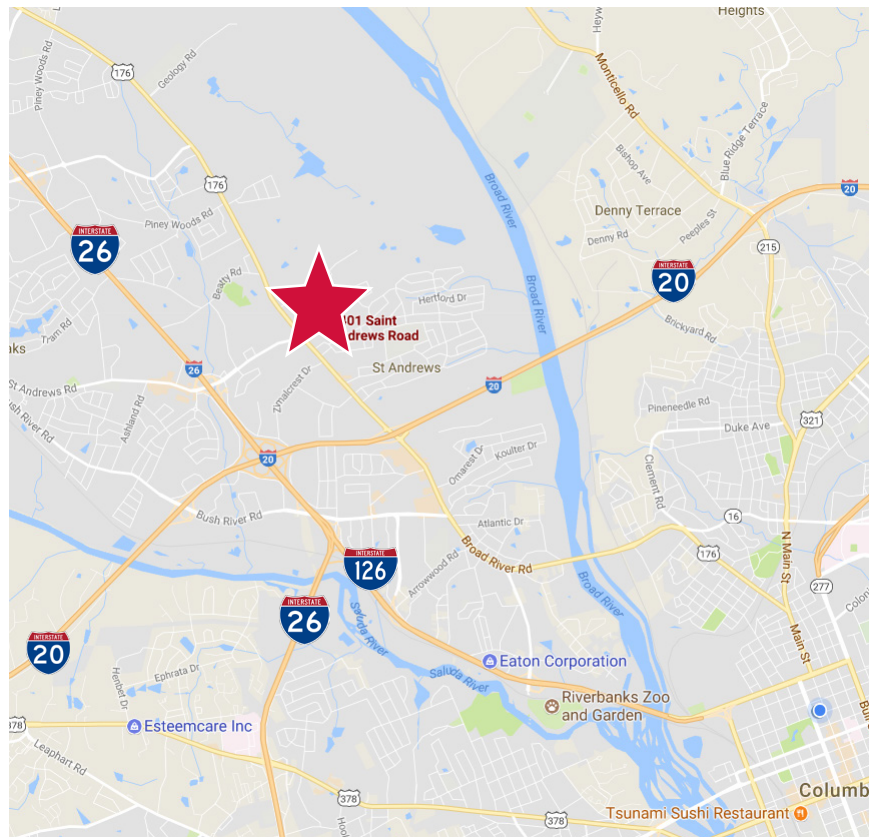
Signage overlooking St. Andrews Rd.

Dock high or Drive-In door

Zoned: General Commercial

Close proximity to I-20 and I-26

LEASE RATE: \$9.00 PSF NNN



1545 Sumter Street, Columbia, SC 29201 T 803.779.8600 www.wilsonkibler.com

John Mills
803.255.8628 john.mills@wilsonkibler.com

Boo Kibler Moca
803.255.8608 boo@wilsonkibler.com

THE BUSINESS PARK OF SAINT ANDREWS

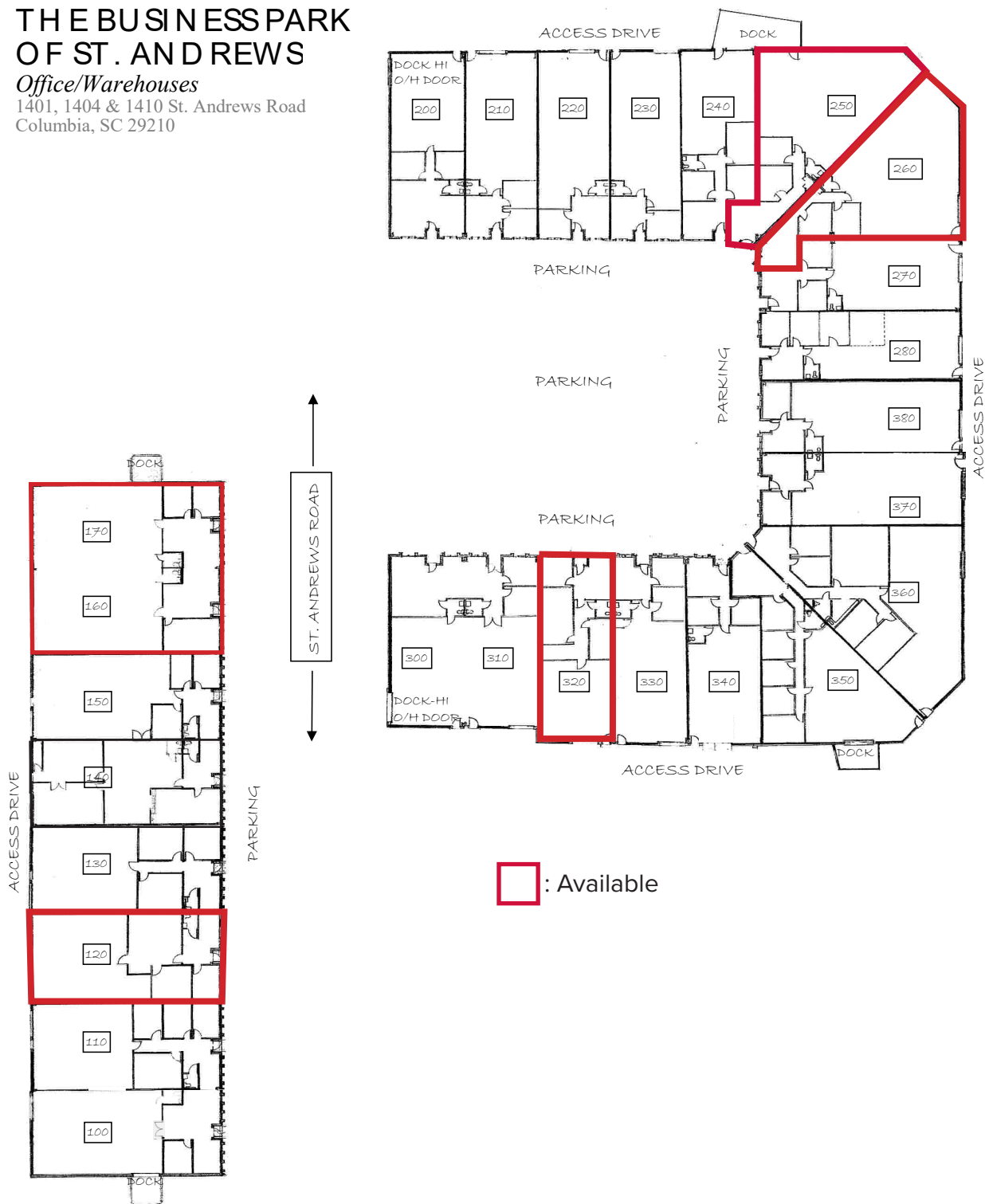
1401, 1404, 1410 St. Andrews Road
Columbia, South Carolina



THE BUSINESS PARK OF ST. ANDREWS

Office/Warehouses

1401, 1404 & 1410 St. Andrews Road
Columbia, SC 29210



Revised:
1/21/25

1545 Sumter Street, Columbia, SC 29201 T 803.779.8600 www.wilsonkibler.com

John Mills
803.255.8628 john.mills@wilsonkibler.com

Boo Kibler Moca
803.255.8608 boo@wilsonkibler.com