



Call for Pricing

US Hwy 89/91
Nibley, UT

Parcels 1 - New Development

- Zone: (C) Commercial and (R-M) Mixed Residential
- 144 proposed residential lots

Parcel 2 - 25.10 acres

Zone: (A) Agriculture

Parcel 3 - 9.90 acres

Zone: (A) Agriculture

Parcel 4 - 20 acres

Zone: (A) Agriculture

- Expanding Industrial Zones: Nibley is strategically developing two industrial areas along US 89/91, positioning itself as a regional hub for light manufacturing and logistics.
- Major Employers: Utah State University, Cache County School District, Intermountain Healthcare and Cache Valley Electric
- Business-friendly climate: Nibley's focus on infrastructure, streamlined permitting, and development incentives has made it increasingly attractive for commercial and industrial investment.

Contact:

Stuart Thain

Executive Vice President
+1 801 947 8303
stuart.thain@colliers.com

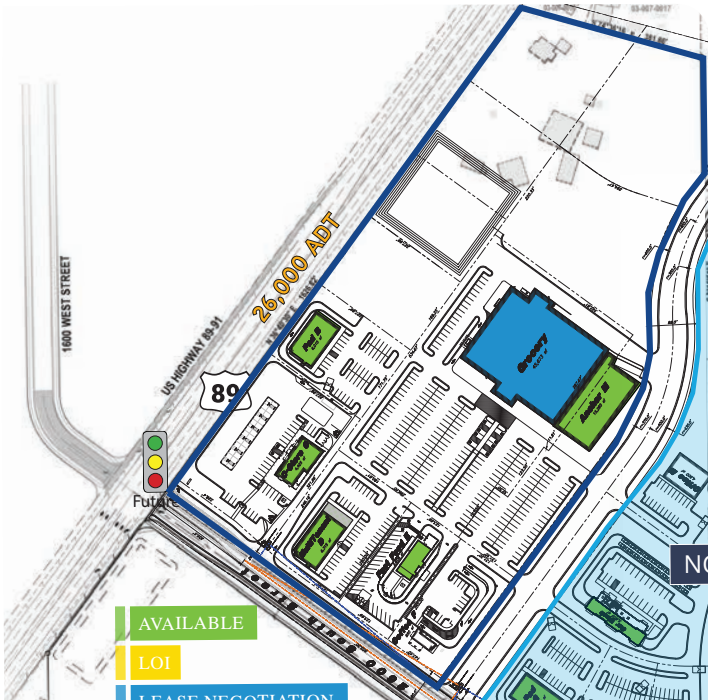
Colliers

6440 S. Millrock Dr., Suite 500
Salt Lake City, UT 84121
Main: +1 801 947 8300
colliers.com

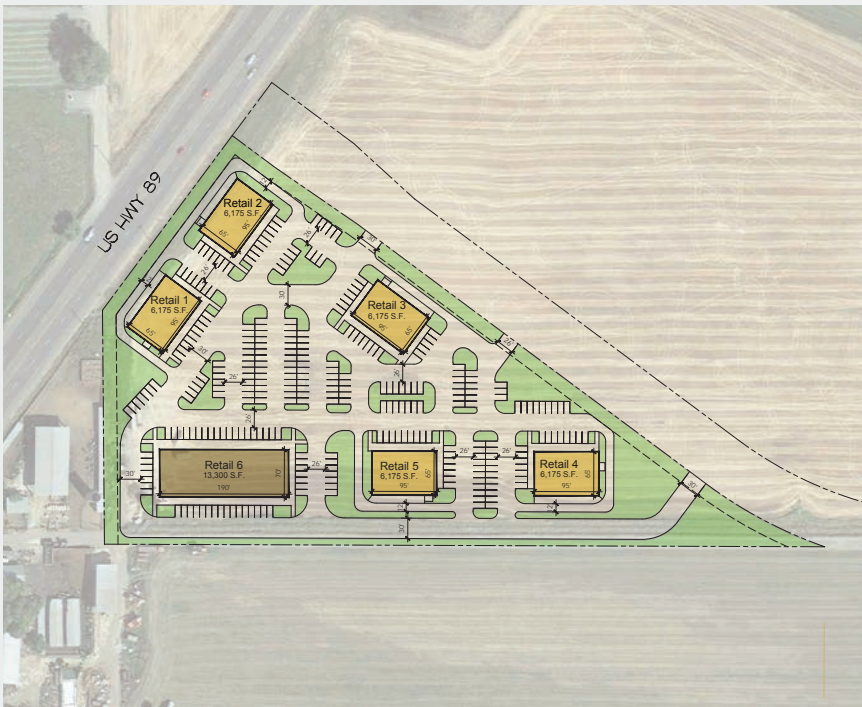
Accelerating success.

Development Site Plans

Site Plan



Site Plan





Colliers

6440 S. Millrock Dr., Suite 500
Salt Lake City, UT 84121
Main: +1 801 947 8300
colliers.com

Stuart Thain

Executive Vice President
+1 801 947 8303
stuart.thain@colliers.com

This document has been prepared by Colliers International for advertising and general information only. Colliers International makes no guarantees, representations or warranties of any kind, expressed or implied, regarding the information including, but not limited to, warranties of content, accuracy and reliability. Any interested party should undertake their own inquiries as to the accuracy of the information. Colliers International excludes unequivocally all inferred or implied terms, conditions and warranties arising out of this document and excludes all liability for loss and damages arising there from. This publication is the copyrighted property of Colliers International and/or its licensor(s). ©2025. All rights reserved.