



For Sale

115 E 67th St

Built Out Medical Condo For Sale | 1,800 SF

MRG
Momentum Realty Group

Property Details

OVERVIEW

ADDRESS	115 E 67th St, New York, NY 10065
CROSS STREETS	Between Lexington Ave & Park Ave
NEIGHBORHOOD	Upper East Side

SPACE DETAILS

TOTAL SF	1,800 sq ft
CEILING HEIGHT	9.50 ft
FRONTAGE	10 ft

HIGHLIGHTS

- Six Built-out Exam Rooms with Plumbing
- Doorman Building
- Access from the Street

NEIGHBORS



wonder crumbl janovic vuor1

PARK AVENUE
ARMORY

HUNTER
The City University of New York



goodsugar™ CHASE  citibike.

 CYCLEBAR  TD Bank  MANHATTAN
CARDIOLOGY®
every beat counts

alo

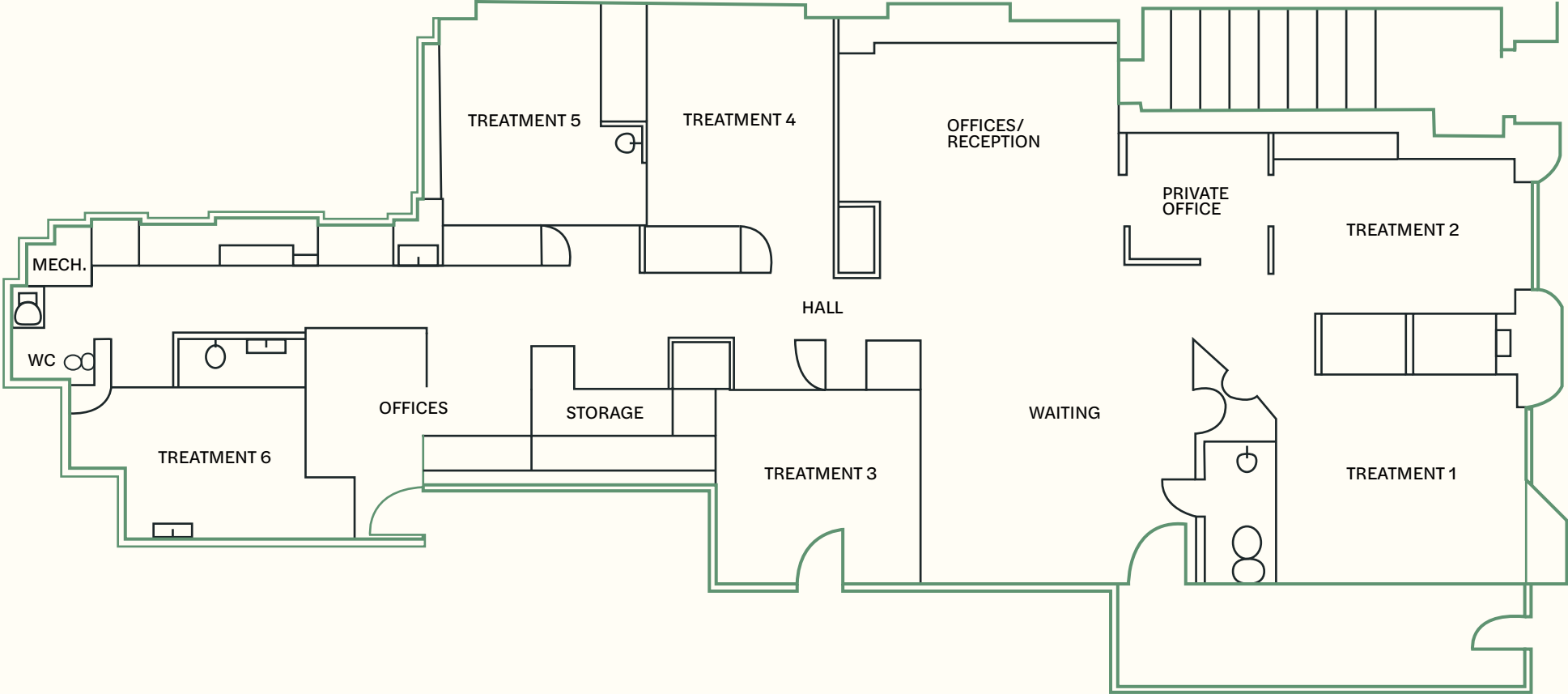
Ouri's


GOURMET
BAGEL



More Than Brokers.
Trusted Partners.

Floor Plan



Floor plan is representational. Dimensions subject to field verification.

Location

TRANSPORTATION



M66, M98 Buses
2 min walk to bus lines



Train F, Q
5 min walk to subway



LGA Airport | **JFK Airport** | **EWR Airport**
25 min drive | 35 min drive | 40 min drive

DEMOGRAPHICS



Population
33,613



Median Household Income
\$151,875



Median Home Value
\$1,420,000





115 East 67th St

115 East 67th St
New York, NY 10065
1,800 sq ft · For Sale

INQUIRIES

To arrange a showing or discuss leasing terms, please reach out to one of our agents directly.

Ely Akiva

Ely@mrgny.com
212-314-4684 · Ext. 105

Moshe Akiva

Moshe@mrgny.com
212-314-4684 · Ext. 103

Jacob Rishty

Jacobr@mrgny.com
212-314-4684 · Ext. 109

All information supplied in this marketing presentation and/or flyer is from sources deemed reliable and is furnished subject to errors, omissions, modifications, removal of listings from sale/lease and to any listing condition. Any square footage, dimensions, floor plans and/or technical data set forth are approximations and are subject to further elaboration/confirmation.