

FOR SALE

# 6624-6626 OWENS DRIVE

PLEASANTON, CA



## PROPERTY HIGHLIGHTS

- + Approximately  $\pm 11,011$  RSF office condo
- +  $\pm 6,113$  RSF available for owner/user
- +  $\pm 4,898$  RSF leased, expiration 5/31/25
- + \$4,500,000 Asking price
- + Pleasanton Park
- + Units each have grade level door; 16 foot clear with ample office
- + End Unit
- + Close proximity to I-580



## CONTACT US

### ADAM EBNER

Senior Vice President  
+1 925 251 4606  
adam.ebner@cbre.com  
Lic. 01213890

[www.cbre.com/walnutcreek](http://www.cbre.com/walnutcreek)

**CBRE**

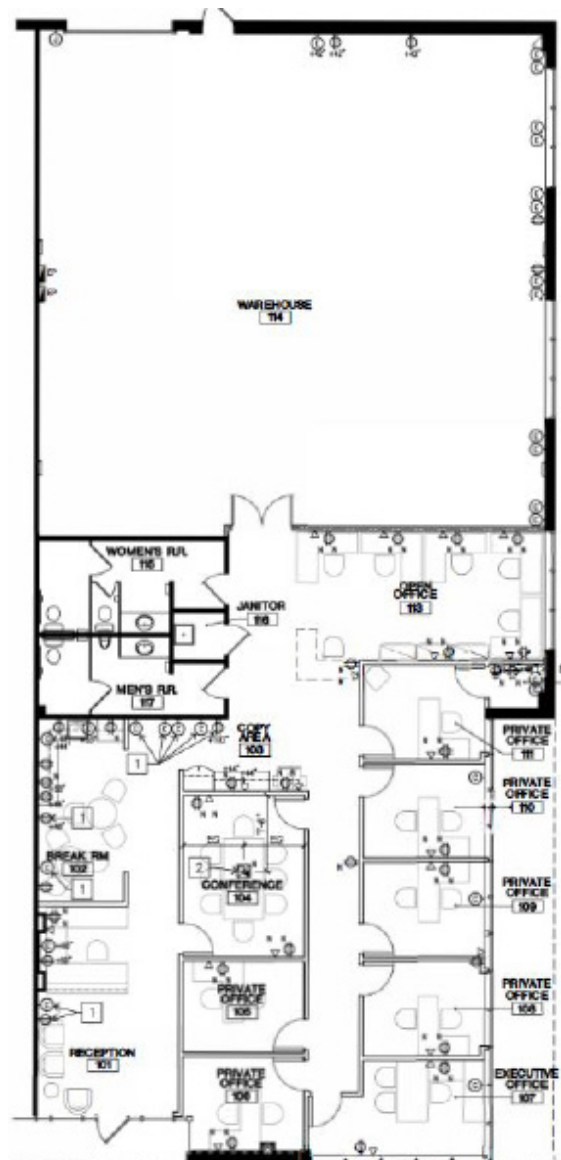
FOR SALE  
**6624-6626 OWENS DRIVE**

PLEASANTON, CA



**FLOOR PLAN - 6626 OWENS DRIVE**

±6,113 RSF



© 2020 CBRE, Inc. All rights reserved. This information has been obtained from sources believed reliable, but has not been verified for accuracy or completeness. You should conduct a careful, independent investigation of the property and verify all information. Any reliance on this information is solely at your own risk. Photos herein are the property of their respective owners. Use of these images without the express written consent of the owner is prohibited. CBRE and the CBRE logo are service marks of CBRE, Inc. All other marks displayed on this document are the property of their respective owners, and the use of such logos does not imply any affiliation with or endorsement of CBRE.

FOR SALE

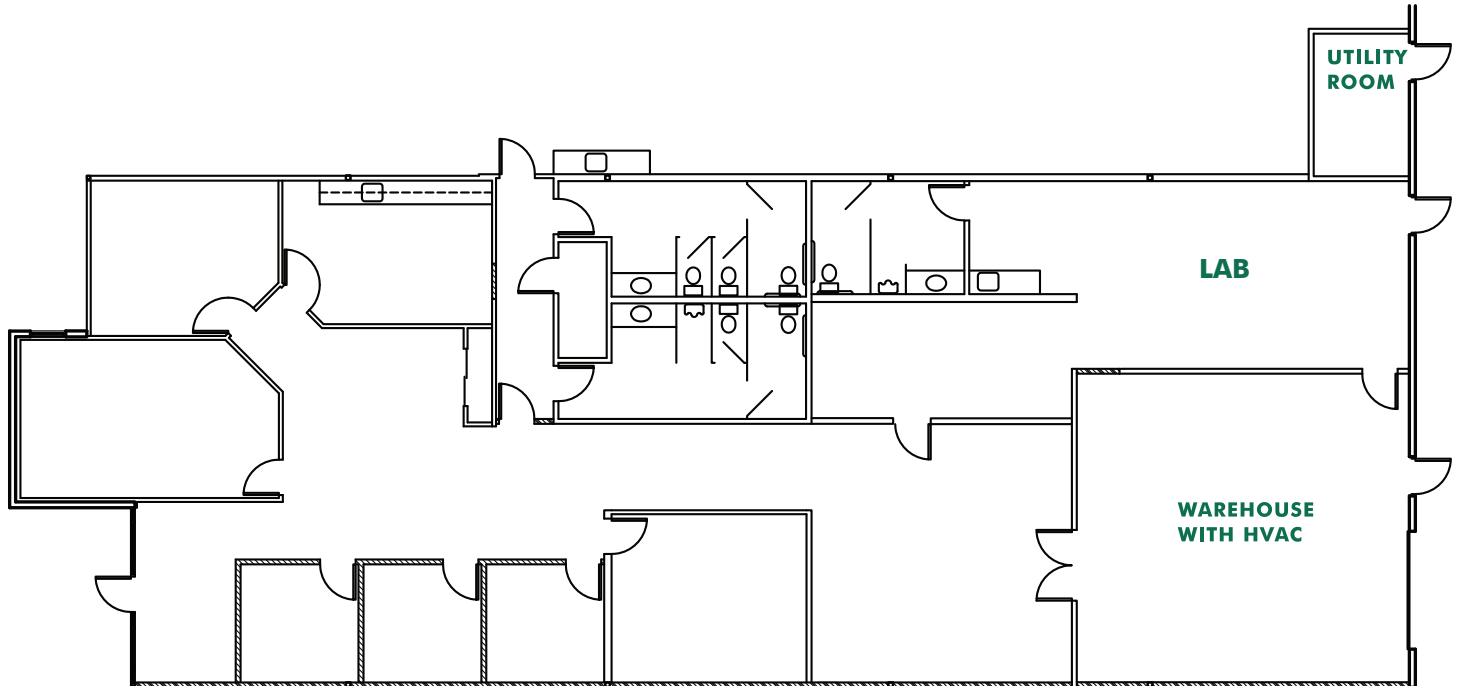
# 6624-6626 OWENS DRIVE

PLEASANTON, CA



## FLOOR PLAN - 6624 OWENS DRIVE

±4,898 RSF - LEASED



© 2020 CBRE, Inc. All rights reserved. This information has been obtained from sources believed reliable, but has not been verified for accuracy or completeness. You should conduct a careful, independent investigation of the property and verify all information. Any reliance on this information is solely at your own risk. Photos herein are the property of their respective owners. Use of these images without the express written consent of the owner is prohibited. CBRE and the CBRE logo are service marks of CBRE, Inc. All other marks displayed on this document are the property of their respective owners, and the use of such logos does not imply any affiliation with or endorsement of CBRE.

[www.cbre.com/walnutcreek](http://www.cbre.com/walnutcreek)

**CBRE**

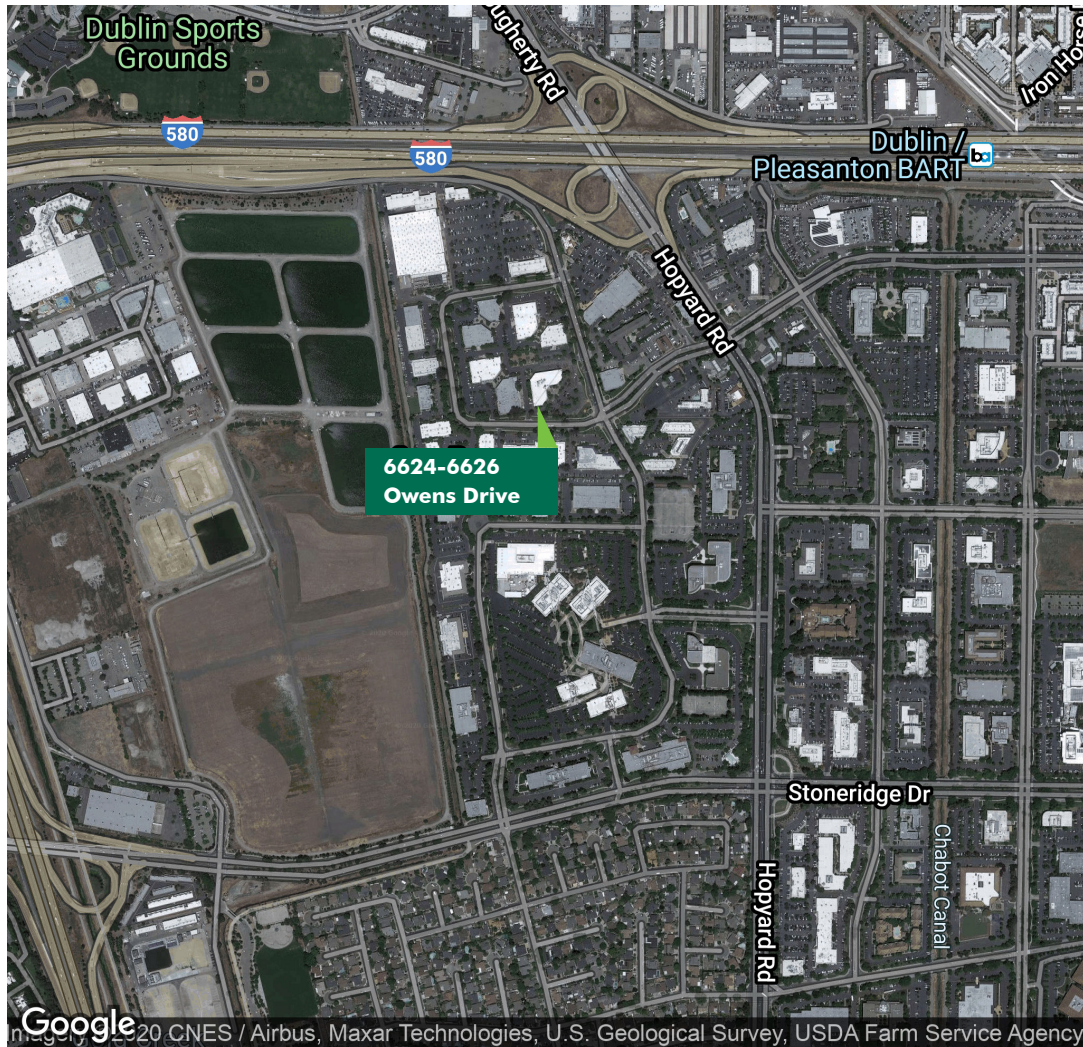
FOR SALE

# 6624-6626 OWENS DRIVE

PLEASANTON, CA



## LOCATION MAP



© 2020 CBRE, Inc. All rights reserved. This information has been obtained from sources believed reliable, but has not been verified for accuracy or completeness. You should conduct a careful, independent investigation of the property and verify all information. Any reliance on this information is solely at your own risk. Photos herein are the property of their respective owners. Use of these images without the express written consent of the owner is prohibited. CBRE and the CBRE logo are service marks of CBRE, Inc. All other marks displayed on this document are the property of their respective owners, and the use of such logos does not imply any affiliation with or endorsement of CBRE.

[www.cbre.com/walnutcreek](http://www.cbre.com/walnutcreek)

**CBRE**