

2035 Ralph Avenue

Flatlands | Medical Suites



LEASE INFORMATION

Leasable Area: Suites 1, 6 & 9

Cross Streets: E 72nd Street

Pricing & Terms: Upon Request

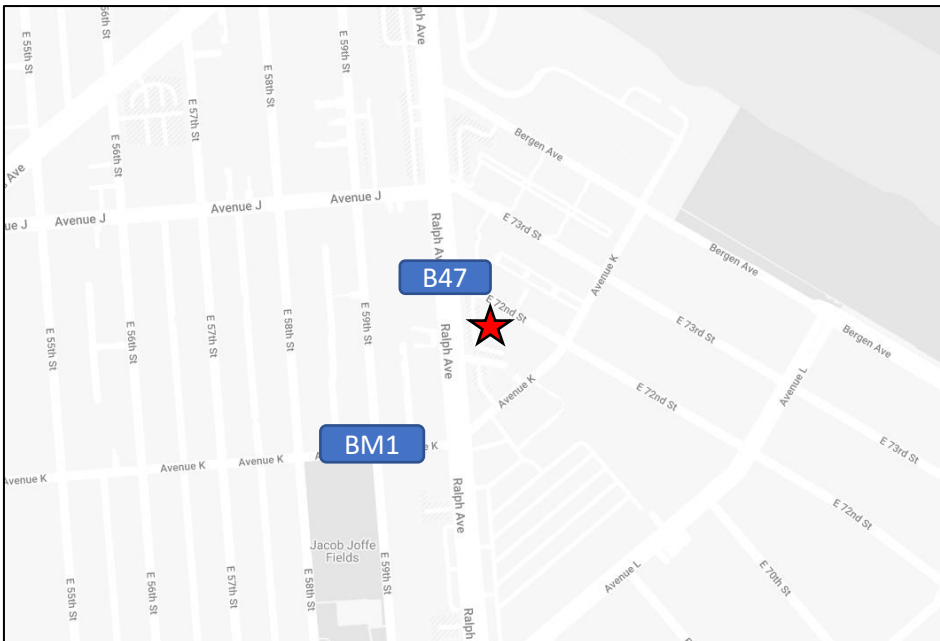
Availability: Immediately

Transportation: B47 & BM1

SUMMARY

The Scott Medical Center is in an accessible location with ample parking and nearby amenities. This medical office building has three vacant spaces ready for your practice. Ample parking is available for all tenants and visitors. With a variety of layout options and customizable spaces, this building offers flexibility to meet the unique needs of your practice.

Located near Georgetowne Shopping Mall (0.2 miles), Paerdegat Basin Park (1 mile), Flatbush Ave (1.3 miles) and the Belt Parkway (4 miles), this building offers convenience and accessibility for both patients and staff.



For more information, please contact:

Peter Matheos

Founder & President

212.381.6057

peter@matheosrg.com

George Hewitt

Senior Associate

718.490.1245

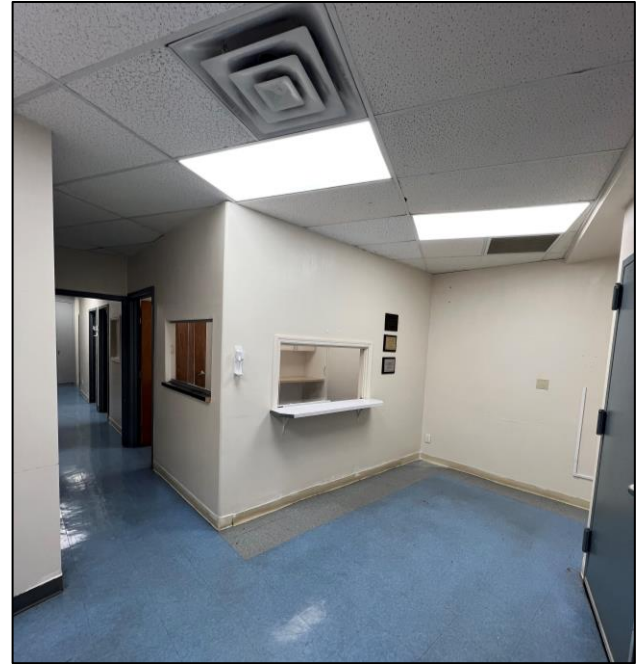
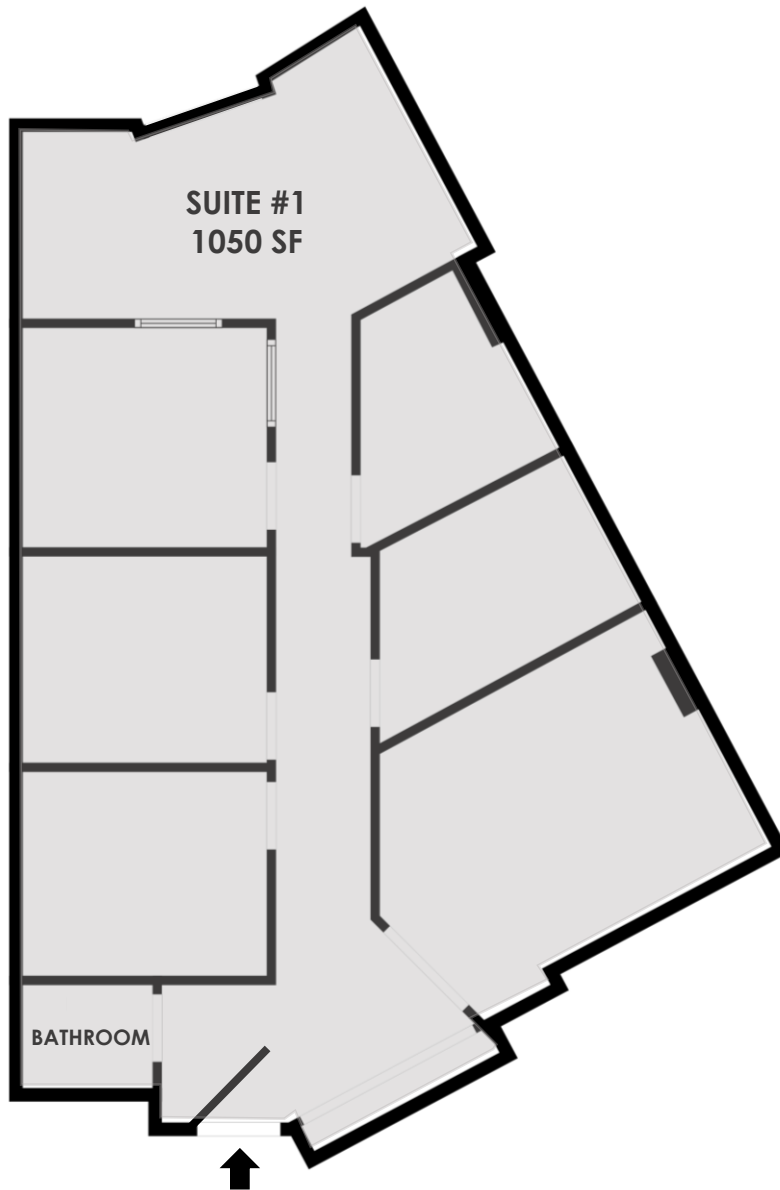
george@matheosrg.com

48 Wall Street | 11th FL | New York, NY 10005
T: 212.381.6057 | 646.423.0757 | F: 917.210.4021



2035 Ralph Avenue

Medical Suite 1 | 1050 SF



For more information, please contact:

Peter Matheos

Founder & President

212.381.6057

peter@matheosrg.com

George Hewitt

Senior Associate

718.490.1245

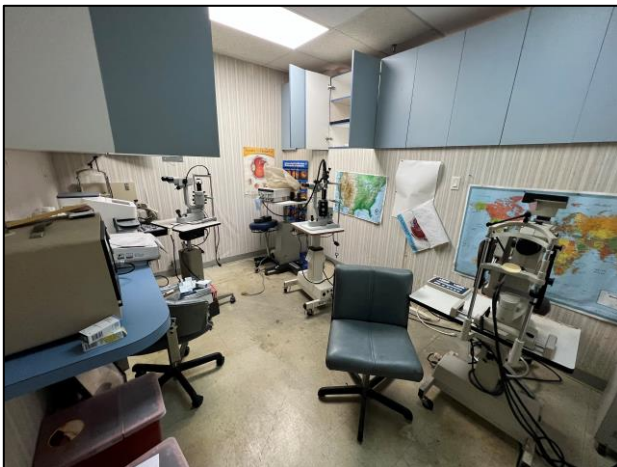
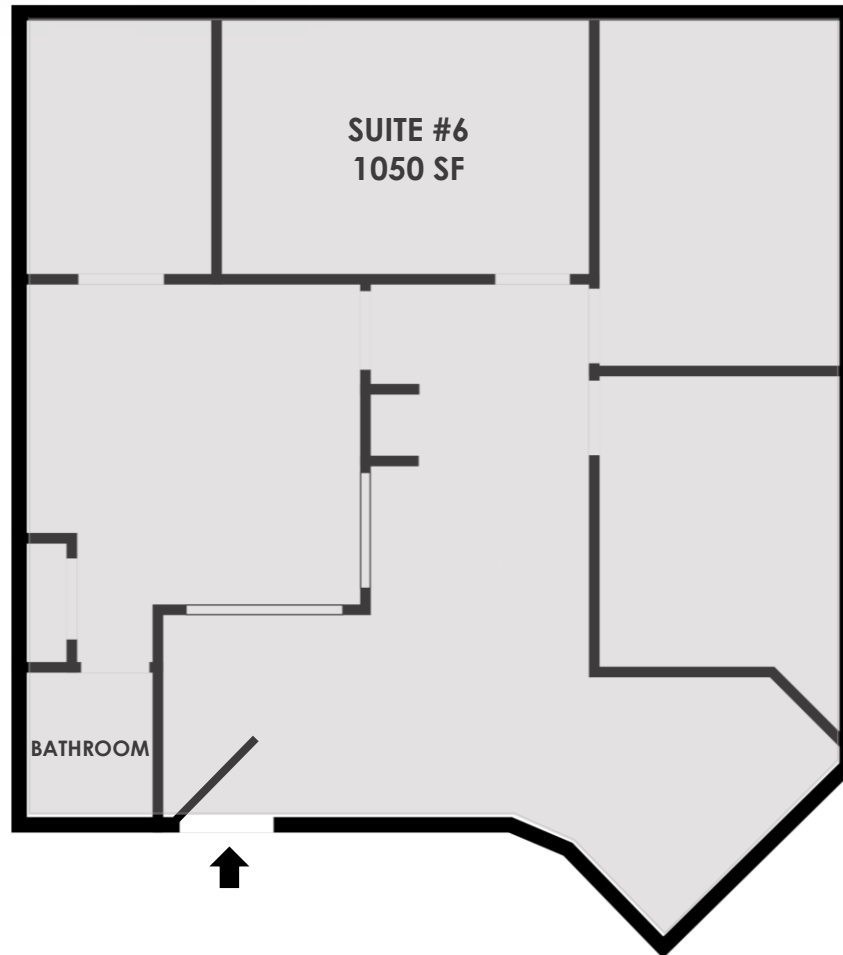
george@matheosrg.com

48 Wall Street | 11th FL | New York, NY 10005
T: 212.381.6057 | 646.423.0757 | F: 917.210.4021



2035 Ralph Avenue

Medical Suite 6 | 1050 SF



For more information, please contact:

Peter Matheos

Founder & President

212.381.6057

peter@matheosrg.com

George Hewitt

Senior Associate

718.490.1245

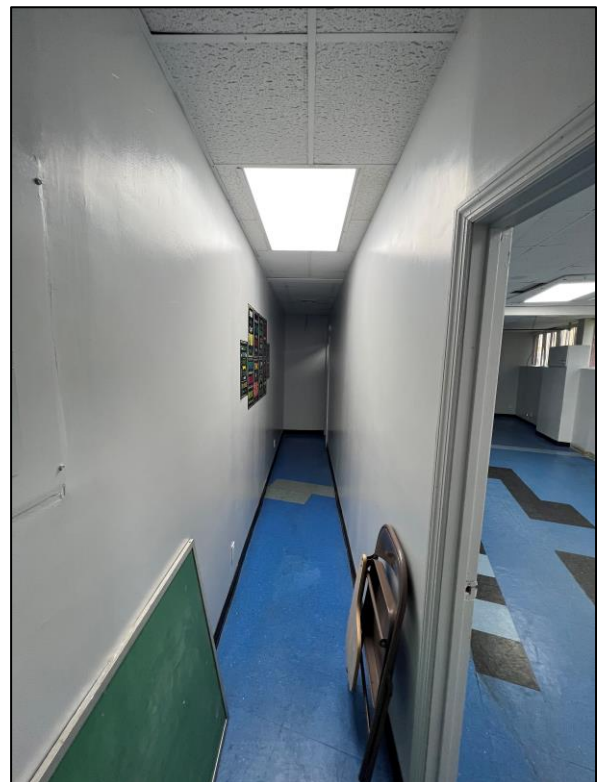
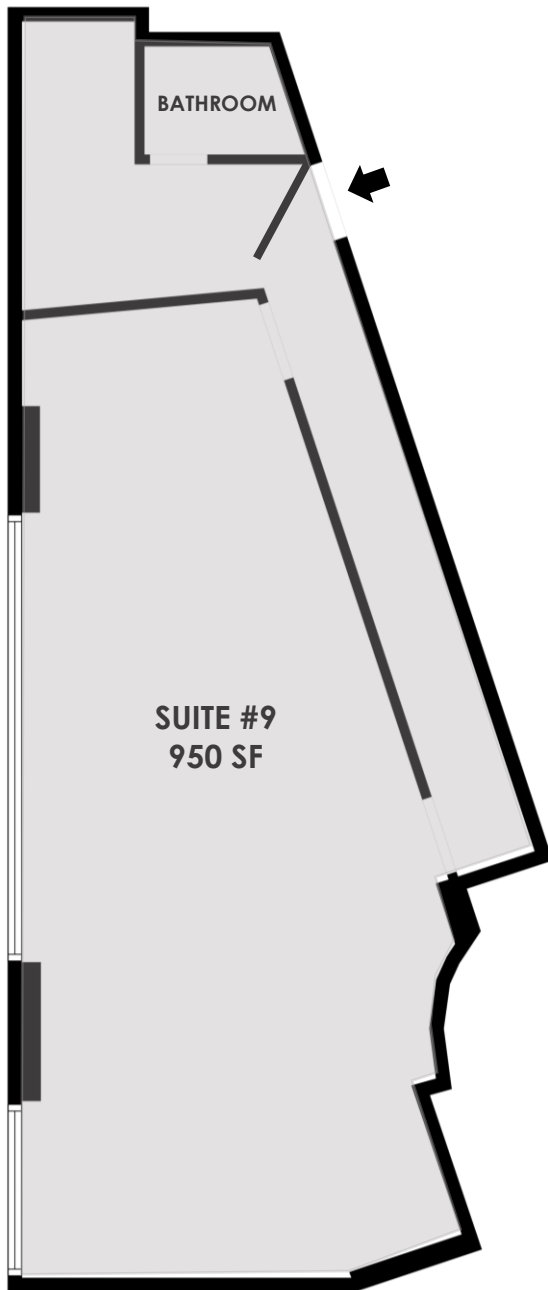
george@matheosrg.com

48 Wall Street | 11th FL | New York, NY 10005
T: 212.381.6057 | 646.423.0757 | F: 917.210.4021



2035 Ralph Avenue

Medical Suite 9 | 950 SF



For more information, please contact:

Peter Matheos

Founder & President

212.381.6057

peter@matheosrg.com

George Hewitt

Senior Associate

718.490.1245

george@matheosrg.com

48 Wall Street | 11th FL | New York, NY 10005
T: 212.381.6057 | 646.423.0757 | F: 917.210.4021

