



## 19 Brookline St

19 Brookline St, Cambridge, MA 02139



**Michael Simon**

Central Property Management LLC  
494 Massachusetts Ave, Cambridge, MA 02139  
[technologycity@mac.com](mailto:technologycity@mac.com)  
(617) 714-3650

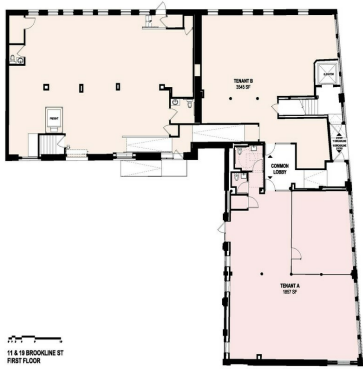


# 19 Brookline St

Upon Request

This standalone building, located at the intersection of Massachusetts Avenue and Brookline Street, offers a versatile space with private, gated off-street parking. Conveniently situated near MIT, Kendall Square, Forest City, and just a short distance from the Central Square MBTA station. Previously leased by Reviewed.com for testing and publishing operations, the property is well-suited for businesses in sectors such as technology, biotech, robotics, and pharmaceuticals....

- Near MIT, Kendall Square, Forest City, and just a short walk from Central Square MBTA Station.
- Spacious open floor plans on both floors, ideal for a range of uses, including office, lab, or tech-focused operations.
- Freight elevator with direct access to testing lab areas and ample basement storage, perfect for specialized operations.
- The property can be leased as a whole or divided into separate floors to accommodate varying business needs.
- Access to attached parking lot.



PIRIA  
ARCHITECTS

First Floor Leasing Plan  
11 & 19 Brookline St

Central Properties LP  
100 Massachusetts Ave  
Cambridge, MA 02139  
March 2021



PIRIA  
ARCHITECTS

Second Floor Leasing Plan  
11 & 19 Brookline St

Central Properties LP  
100 Massachusetts Ave  
Cambridge, MA 02139  
March 2021

Rental Rate:	Upon Request
Min. Divisible:	2,500 SF
Property Type:	Office
Property Subtype:	Loft/Creative Space
Building Class:	B
Rentable Building Area:	11,887 SF
Year Built:	1910
Walk Score ®:	98 (Walker's Paradise)
Transit Score ®:	68 (Good Transit)
Rental Rate Mo:	Upon Request

**1st Floor**

1

Space Available	2,500 - 5,791 SF
Rental Rate	Upon Request
Contiguous Area	11,887 SF
Date Available	May 01, 2025
Service Type	Net
Space Type	Relet
Space Use	Flex
Lease Term	5 - 10 Years

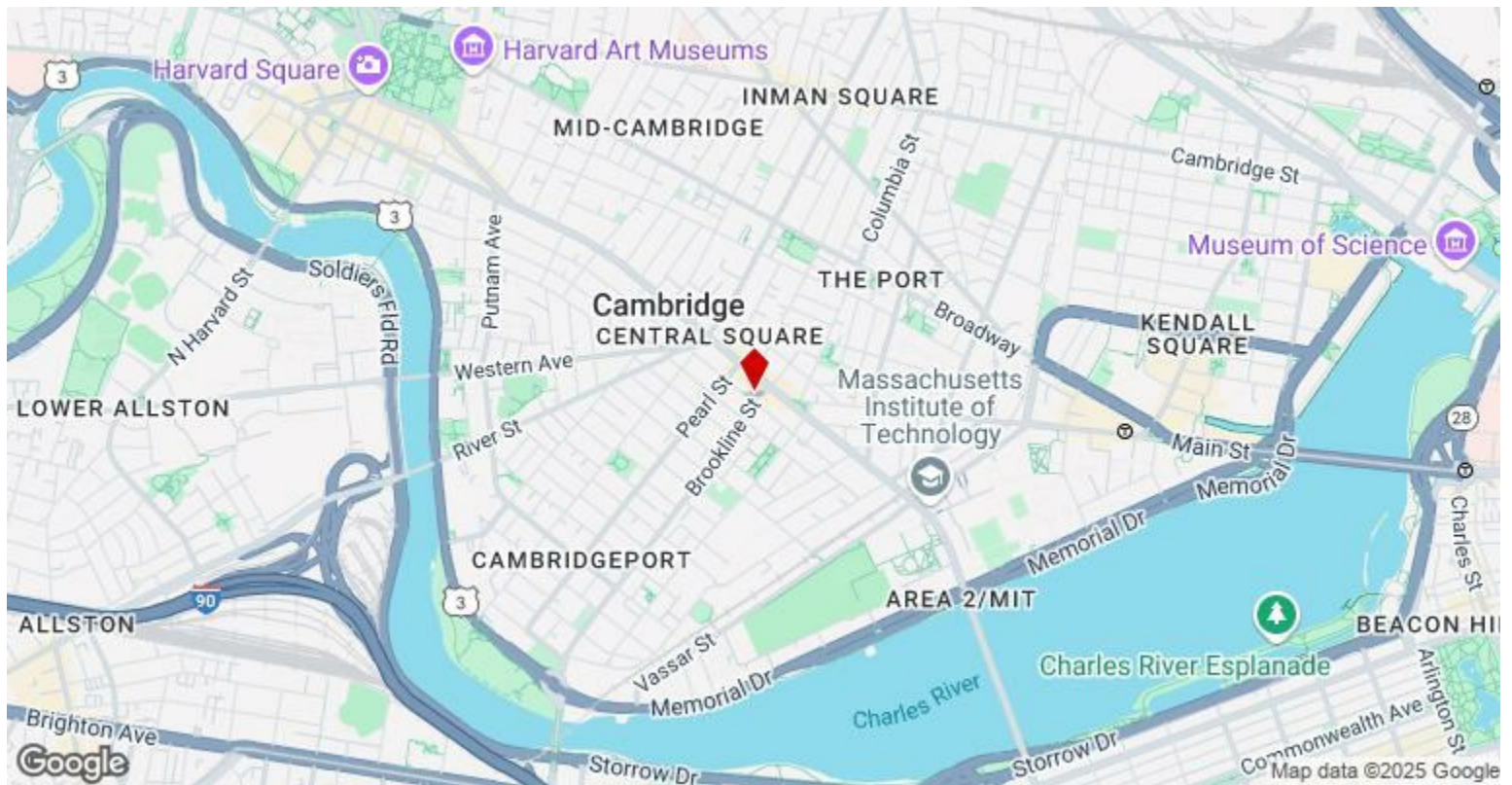
Prime Flex space is available for lease, perfect for research and development (R&D), office, or flexible use. Customize this versatile space to meet your business needs.

**2nd Floor**

2

Space Available	2,500 - 6,096 SF
Rental Rate	Upon Request
Contiguous Area	11,887 SF
Date Available	May 01, 2025
Service Type	Net
Built Out As	Standard Office
Space Type	Relet
Space Use	Office
Lease Term	5 - 10 Years

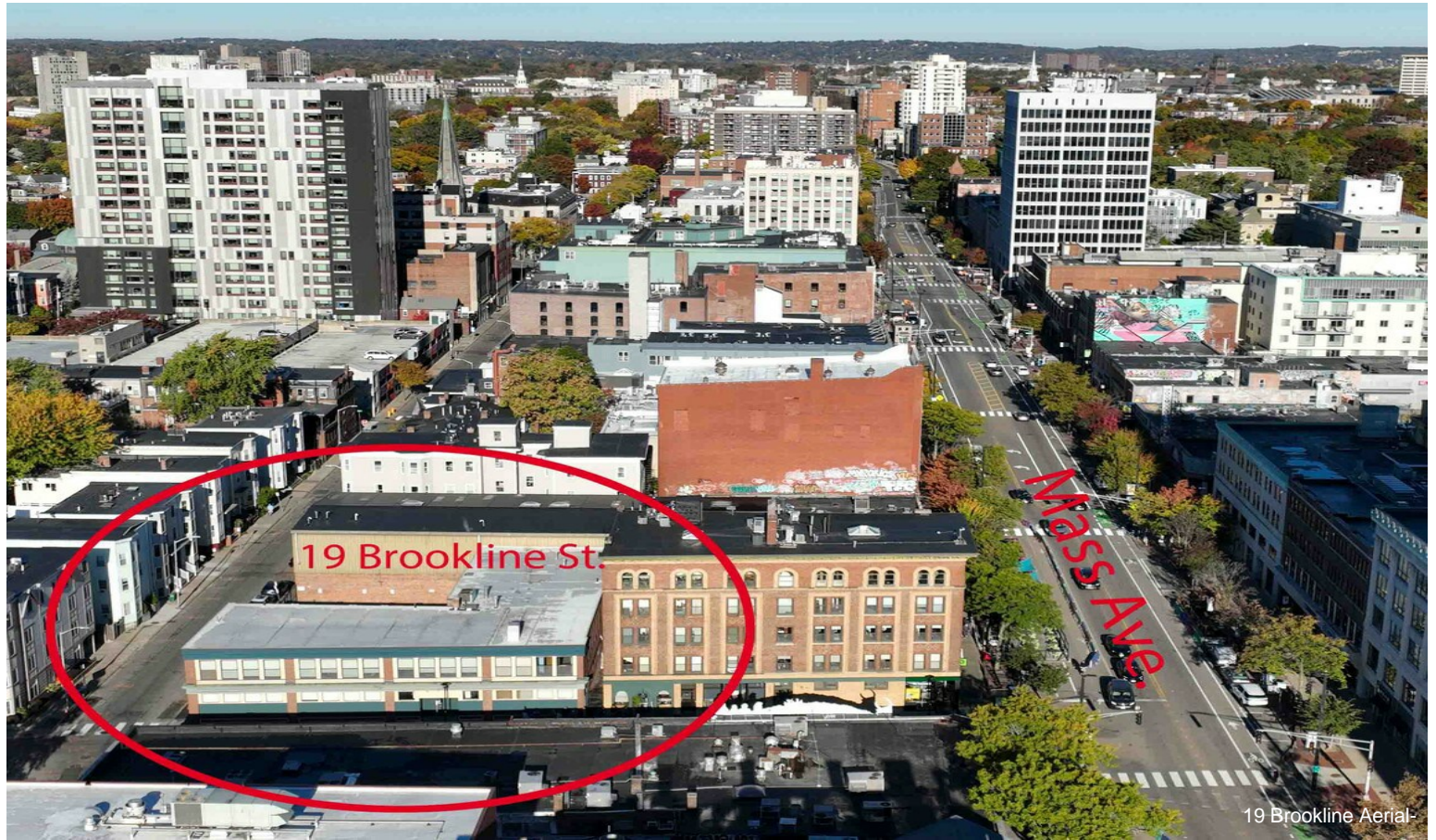
Prime Flex space available for lease, perfect for research and development (R&D), office, or flexible use. Customize this versatile space to meet your business needs.



## 19 Brookline St, Cambridge, MA 02139

This standalone building, located at the intersection of Massachusetts Avenue and Brookline Street, offers a versatile space with private, gated off-street parking. Conveniently situated near MIT, Kendall Square, Forest City, and just a short distance from the Central Square MBTA station. Previously leased by Reviewed.com for testing and publishing operations, the property is well-suited for businesses in sectors such as technology, biotech, robotics, and pharmaceuticals. The first floor features an open floor plan with ample space and includes a freight elevator at the loading dock for direct access to testing lab areas and basement storage. The building is also equipped with high-grade plumbing and electrical systems, offering flexibility for various uses. The second floor, with separate private elevator access, is also designed with an open floor plan, ideal for office space and adaptable to different business configurations. The floors can be leased together or separately, providing flexible options to meet your business needs.

## Property Photos



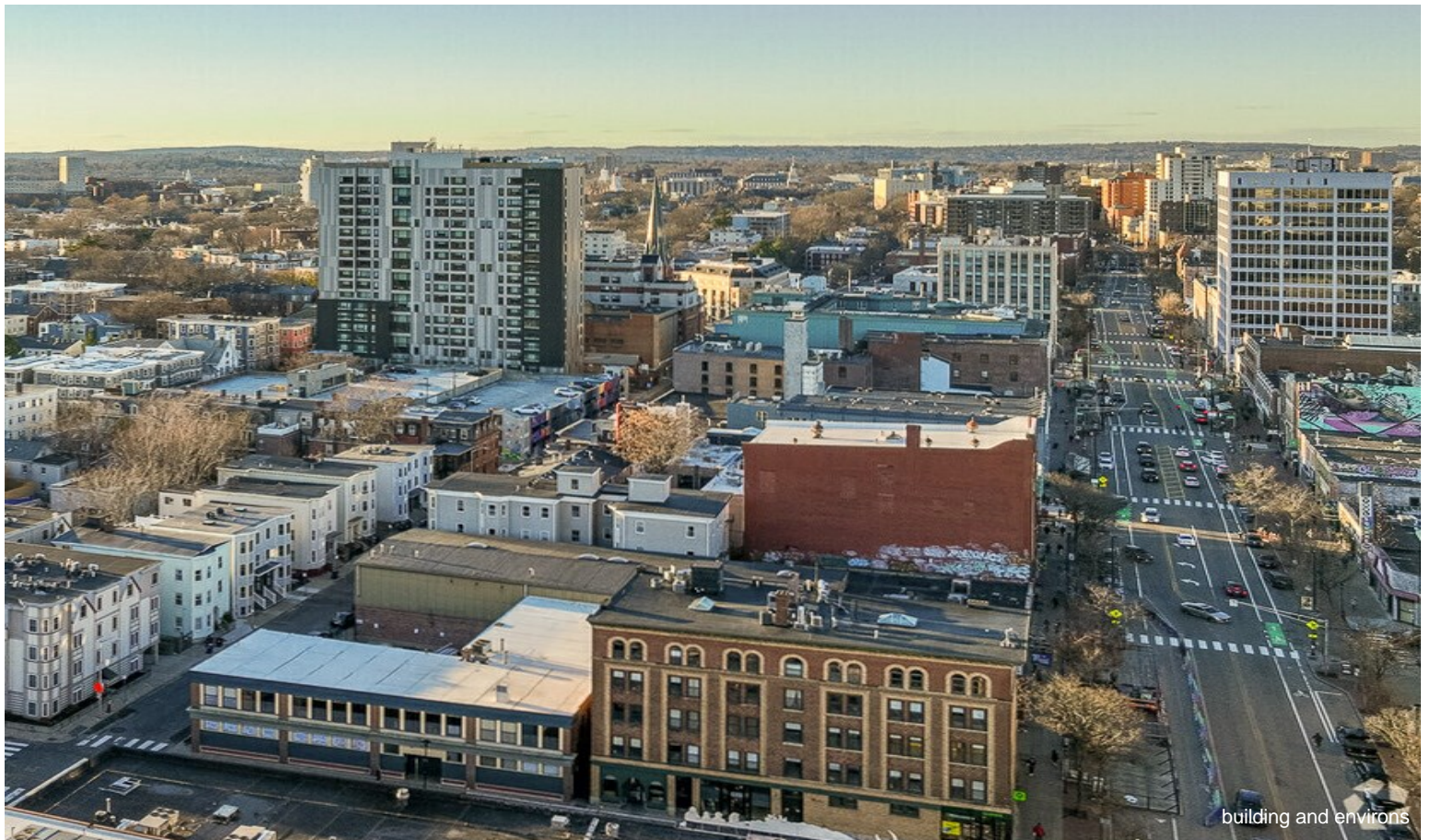
## Property Photos



## Property Photos



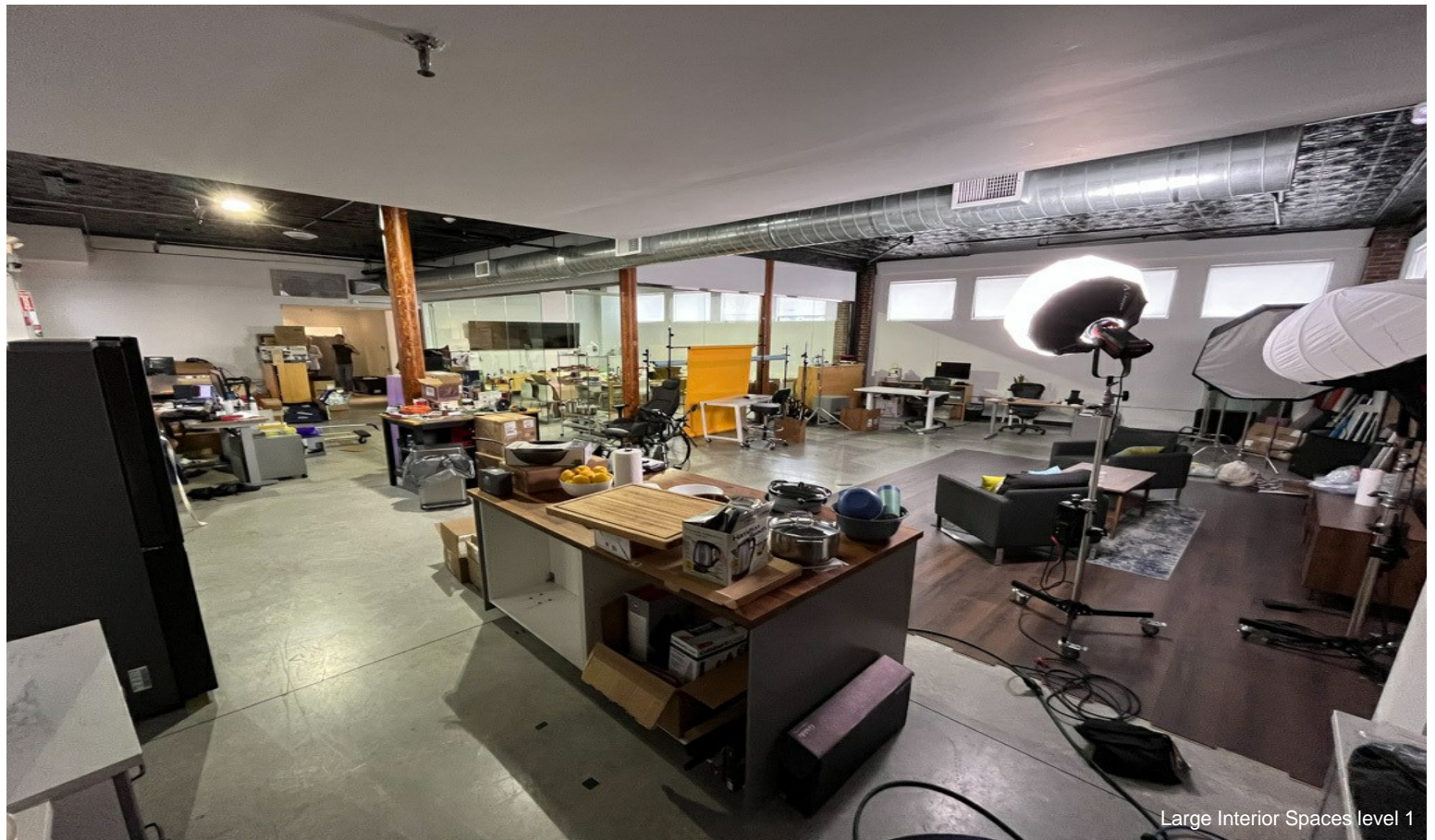
## Property Photos



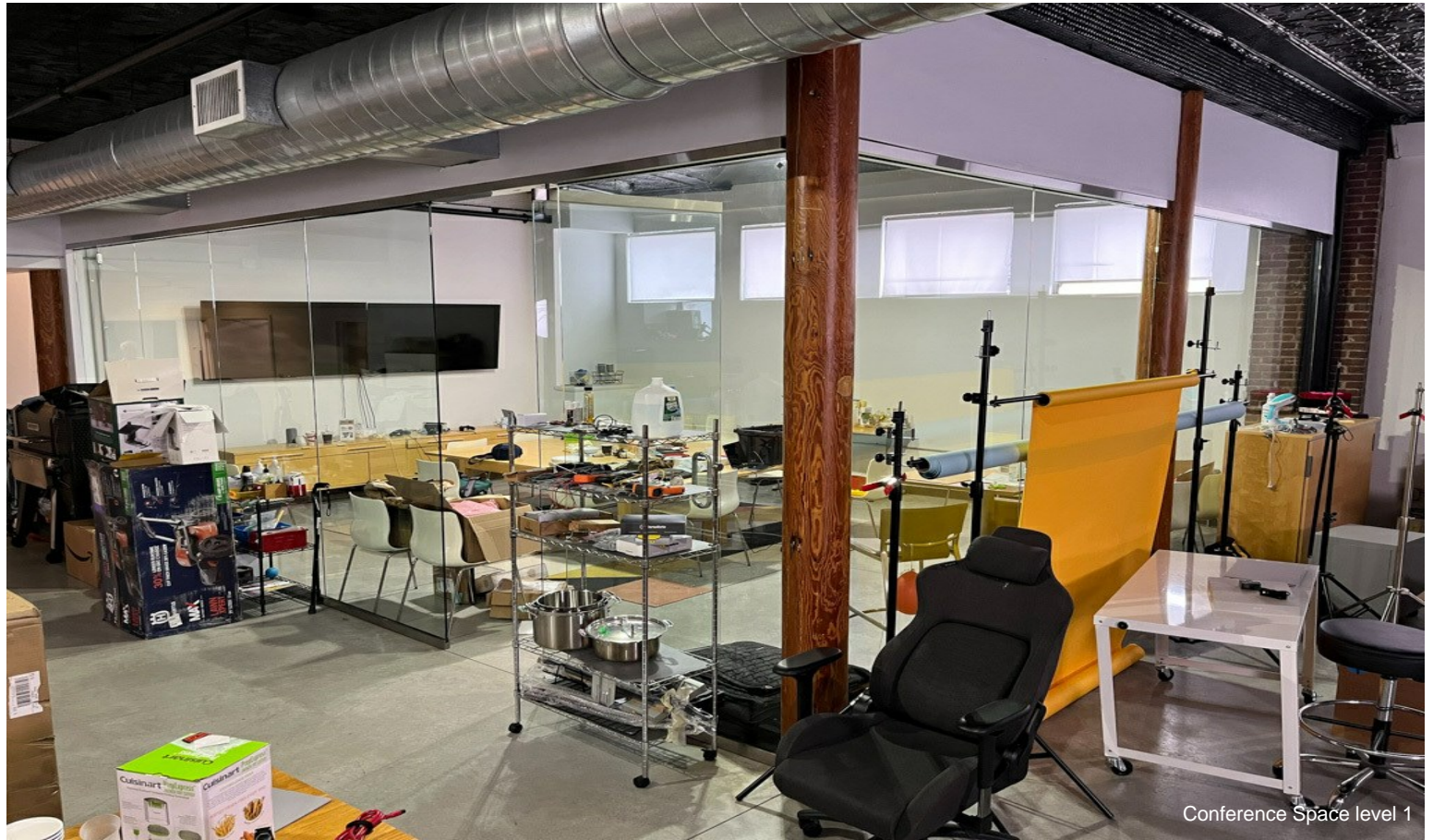
Property Photos



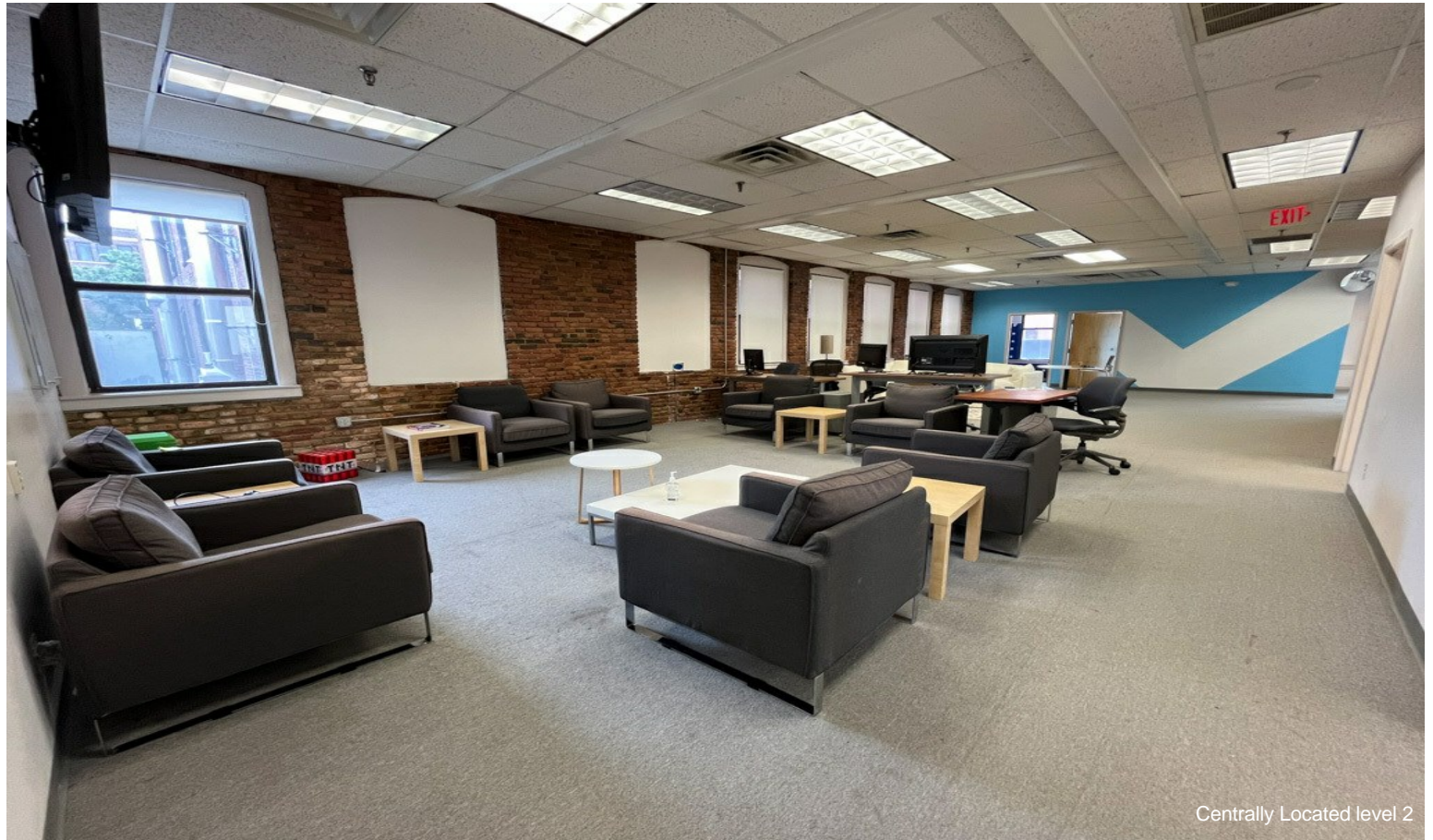
## Property Photos



## Property Photos



## Property Photos



## Property Photos



Cafeteria level 2



Loading Dock

## Property Photos



Property Photos

