

FOR LEASE / INDUSTRIAL LAND

# 249 W. FAIRFIELD

DILLON, SC | PREPARED SITE ADJACENT TO INLAND PORT DILLON



**BRIDGE  
COMMERCIAL**



**Inland  
Port**

> **30 ACRES FOR LEASE - FLEXIBLE SIZES  
FOR LAYDOWN STORAGE AVAILABLE  
NOVEMBER 1, 2022**

> **RECENTLY IMPROVED SITE LOCATED  
ADJACENT TO THE DILLON INLAND  
PORT**

> **OWNER OFFERING FLEXIBLE TERMS  
FOR OUTDOOR STORAGE**

**HAGOOD MORRISON, SIOR MBA, CRE**

843 270 5219

hagood.morrison@bridge-commercial.com

**BROOKS COURTNEY**

859 327 8749

brooks.courtney@bridge-commercial.com

**JOHN BEAM, SIOR**

843 810 6868

john.beam@bridge-commercial.com

Bridge Commercial make no guarantees, representations or warranties of any kind, expressed or implied, including warranties of content, accuracy and reliability. Any interested party should do their own research as to the accuracy of the information. Bridge Commercial excludes warranties arising out of this document and excludes all liability for loss and damages arising out of this document.

# PROPERTY OVERVIEW



**BRIDGE  
COMMERCIAL**

249 West Fairfield Rd offers 30 acres of industrial land in Dillon, SC adjacent to the recently completed Dillon Inland Port. The site lies between the Inland Port and I-95. Container Maintenance Corporation operates the site and will provide reefer service area on the site. Pre-tripping, washing, monitoring and M & R services will be provided for reefer equipment.

## PROPERTY SUMMARY

<b>PARCEL ID:</b>	068-00-00-074
<b>MUNICIPALITY:</b>	Dillon, SC
<b>SITE SIZE:</b>	30 Acres
<b>ZONING:</b>	Industrial
<b>CITY:</b>	Dillon
<b>COUNTY:</b>	Dillon



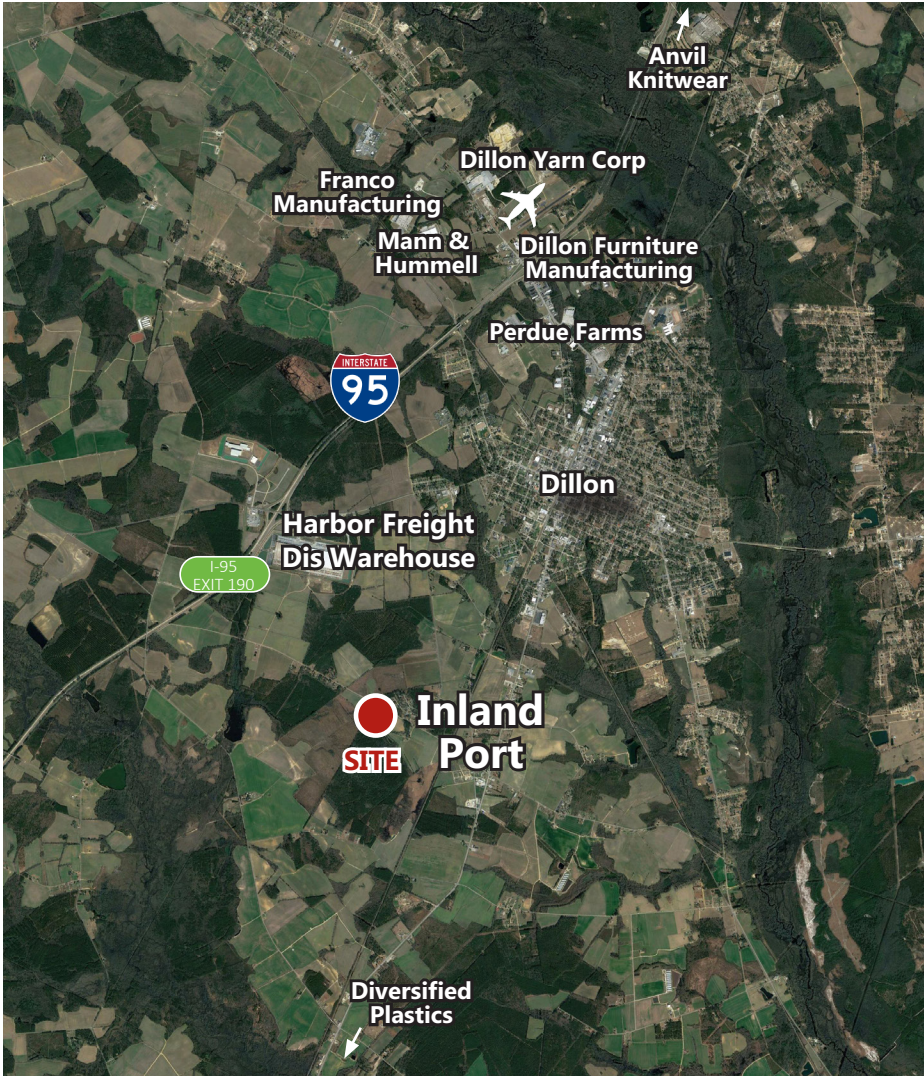
FOR LEASE / INDUSTRIAL LAND

# 249 W. FAIRFIELD

DILLON, SC | PREPARED SITE ADJACENT TO INLAND PORT DILLON



**BRIDGE  
COMMERCIAL**



## Distance to:

Dillon Inland Port: 0.2 Mi

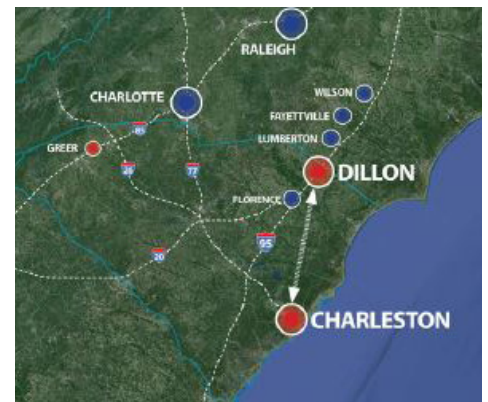
Charleston: 162 Mi

Charlotte: 128 Mi

Wilmington: 106 Mi

Raleigh: 125 Mi

Columbia: 108 Mi



## HAGOOD MORRISON, SIOR MBA, CRE

843 270 5219

hagood.morrison@bridge-commercial.com

## BROOKS COURTNEY

859 327 8749

brooks.courtney@bridge-commercial.com

## JOHN BEAM, SIOR

843 810 6868

john.beam@bridge-commercial.com

## BRIDGE COMMERCIAL

PO Box 22796

Charleston, SC 29413

Tel: +1 843 535 8600

www.bridge-commercial.com

Bridge Commercial make no guarantees, representations or warranties of any kind, expressed or implied, including warranties of content, accuracy and reliability. Any interested party should do their own research as to the accuracy of the information. Bridge Commercial excludes warranties arising out of this document and excludes all liability for loss and damages arising out of this document.