

FOR LEASE

9600 Main St, Clarence, NY 14031

FOR LEASE Available for lease are two adjoining spaces about 1200 sf and 2500 sf each on the southern end of 9600 Main facing Main Street. The 10,176 sf building is directly across the street from Clarence High School and just east of Goodrich Road. There is a paved parking lot for about 60 cars on its 2.14 acres. The building ownership is affiliated with W.J. Cox Associates, Inc. which occupies about 6,000 sf on the north side of the building.

**Stephen Hunt**

Licensed Associate Real Estate Broker

Direct: (716) 880-1911

shunt@huntcommercial.com

**HUNT Commercial
Real Estate Corporation**

403 Main Street, Suite 200

Buffalo, NY 14203

HUNTCommercial.com

9600 Main Looking North



9600 Main, Parcel 6, Looking North



millington
lockwood
 BUSINESS INTERIORS
 3901 gregory st., suite 800
 buffalo, n.y. 14225-1901
 phone: 716 633-5600

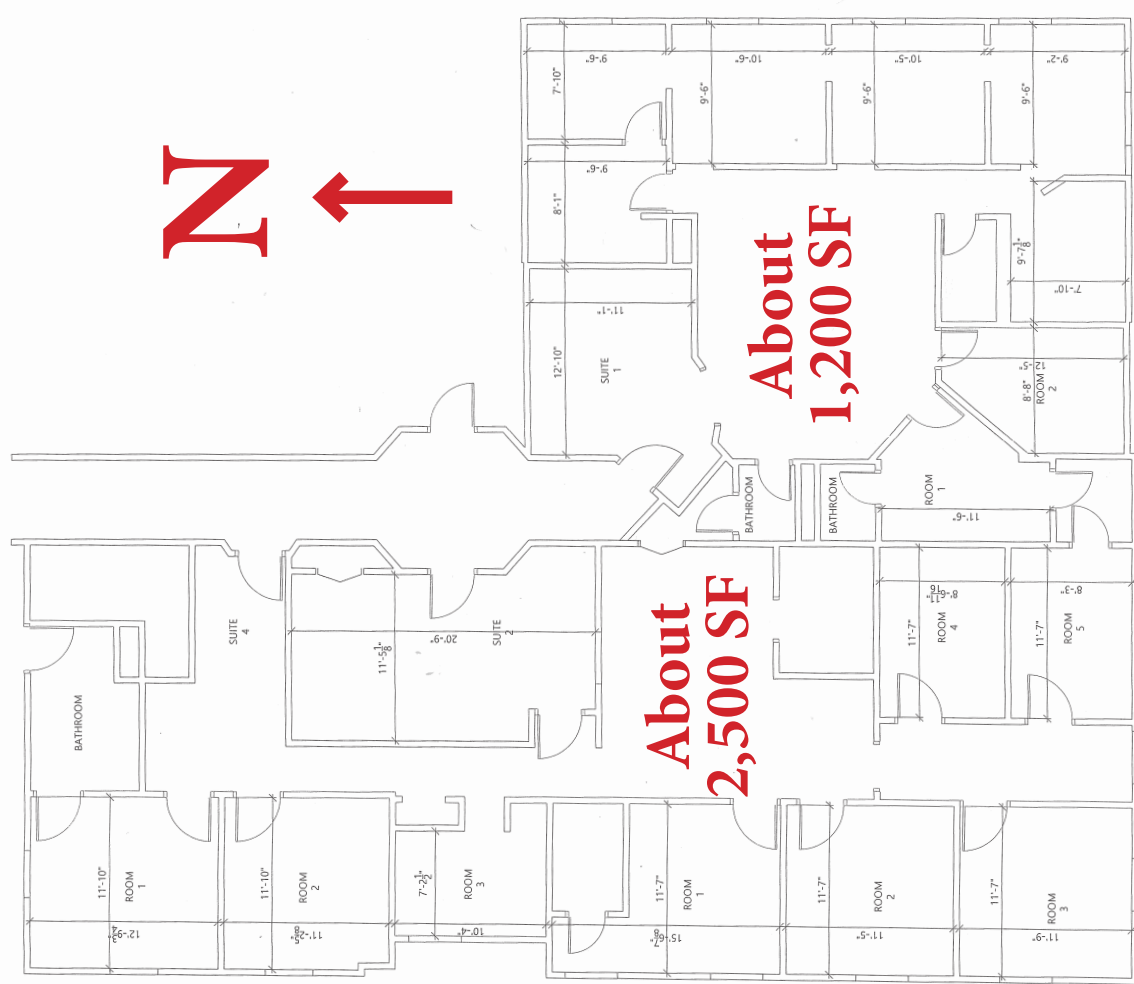
contact _____
 phone _____
 sales _____
 revisions _____
 notes _____
 drawn by _____
 checked by _____
 scale: 1/4" = 1'-0"

note:
 Property of Millington Lockwood.
 This drawing is the property of
 Millington Lockwood and may be
 reproduced or utilized in any
 form without the written
 authorization of Millington
 Lockwood, Inc.

Proposals:

title:

Project: Building Shell



① FLOOR PLAN
 SCALE: 1/4" = 1'-0"
 CUSTOMER APPROVAL

HUNT[®]
Since 1911

COMMERCIAL



HUNT[®]
Since 1911

COMMERCIAL

HUNT Commercial Real Estate Corporation
403 Main Street, Suite 200, Buffalo, New York 14203



© 2022 HUNT Commercial. No warranty or representation, express or implied, is made to the accuracy or completeness of the information contained herein, and same is submitted subject to errors, omissions, change of price, rental, or other conditions, withdrawal without notice, and to any special listing conditions imposed by the property owner(s). As applicable, we make no representation as to the condition of the property (or properties) in question.