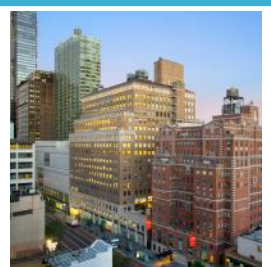
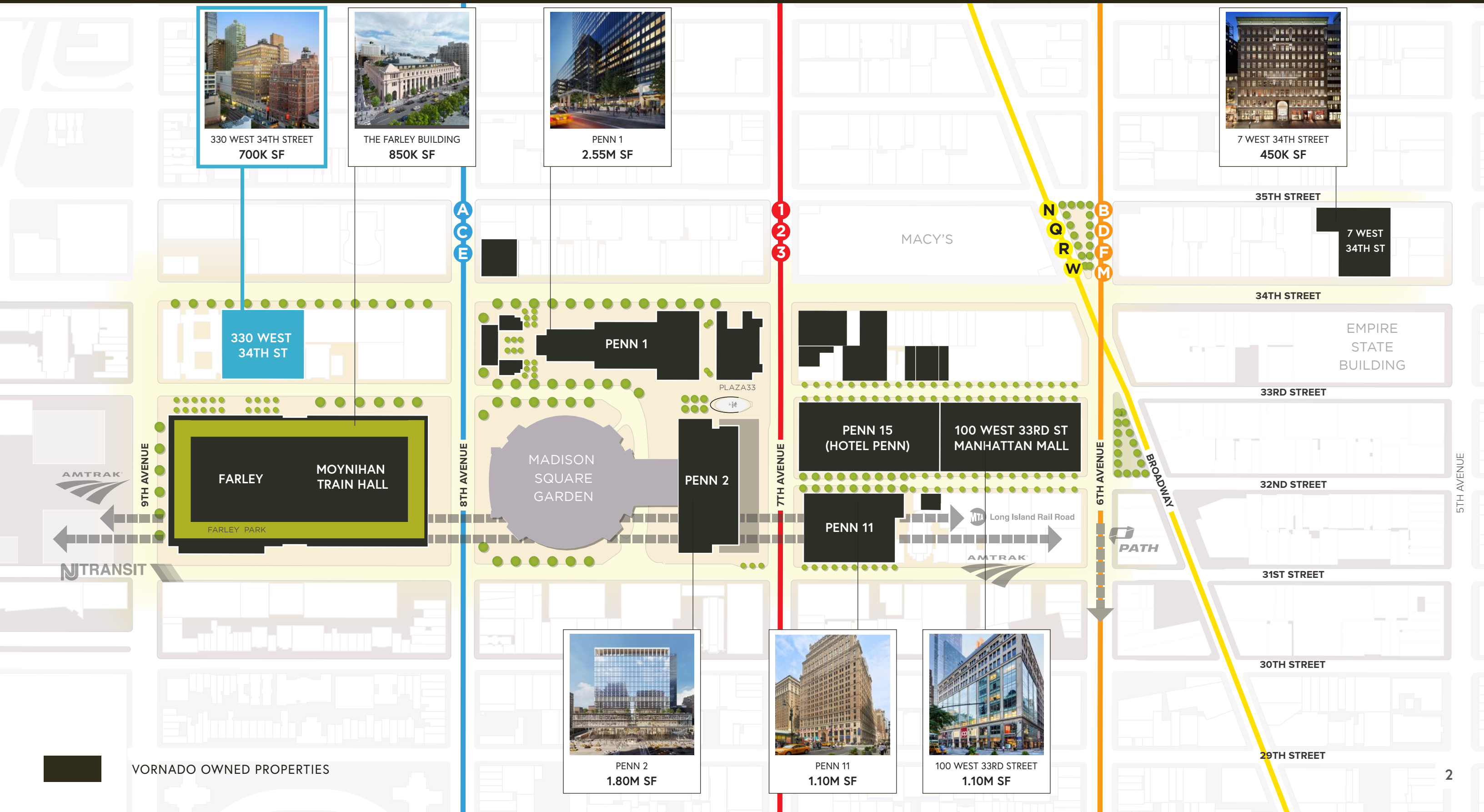




330W34

THE PENN DISTRICT - Vornado's 10MM SF Campus



330 WEST 34TH STREET
700K SF



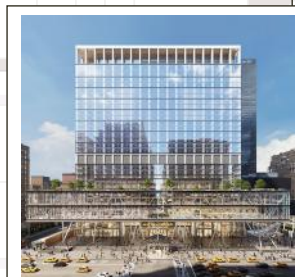
THE FARLEY BUILDING
850K SF



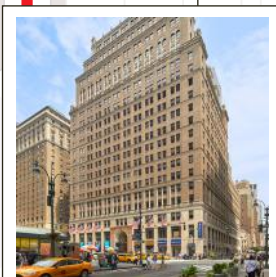
PENN 1
2.55M SF



7 WEST 34TH STREET
450K SF



PENN 2
1.80M SF



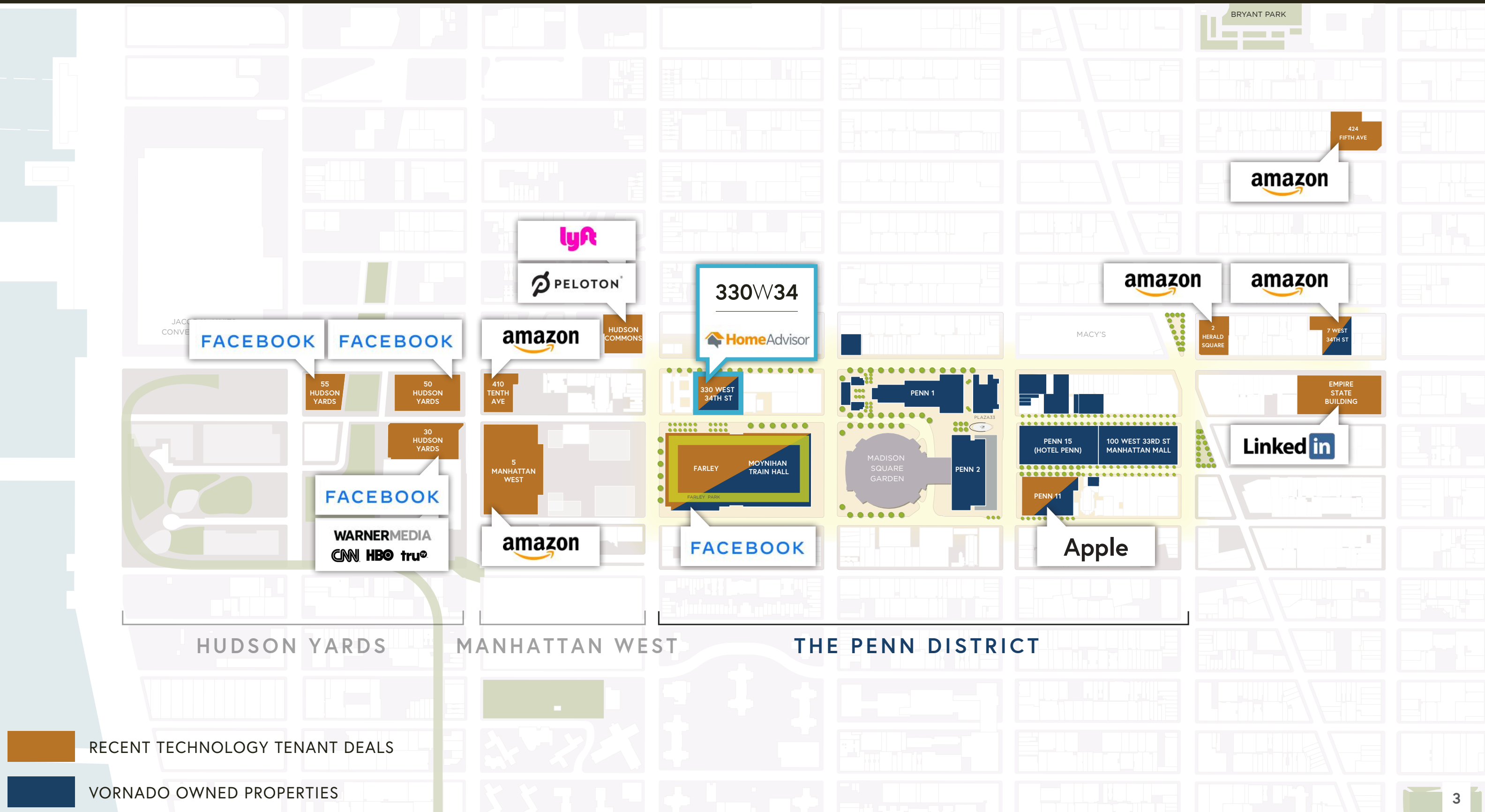
PENN 11
1.10M SF



100 WEST 33RD STREET
1.10M SF

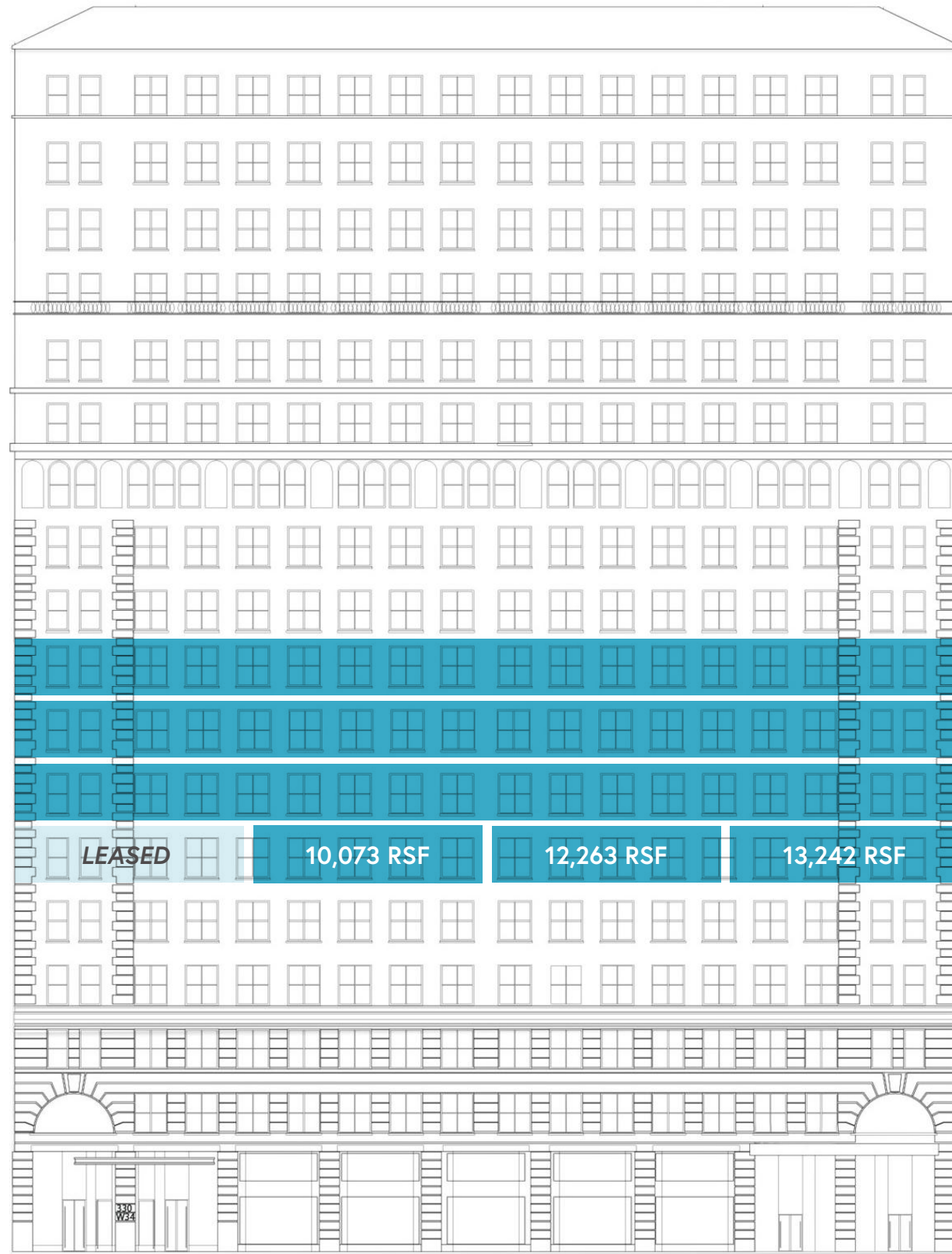
VORNADO OWNED PROPERTIES

MIDTOWN WEST & THE PENN DISTRICT - The New Epicenter for Tech



Stack Plan - Availabilities

330W34



Deutsch



6TH FLOOR PRE-BUILT SUITES



Foot Locker



	OFFICE	TERRACE
9 TH FLOOR	- 43,096 RSF	605 SF
8 TH FLOOR	- 43,948 RSF	1,184 SF
7 TH FLOOR	- 45,649 RSF	
SUBTOTAL	- 132,693 RSF	1,789 SF
6 TH FLOOR	- 35,578 RSF	
TOTAL	168,271 RSF	1,789 SF

AVAILABLE NOW

BAR
PRIMI

9th Floor White Box



Elevator Lobby



Elevator Lobby



9th Floor Internal Stair



9th Floor White Box Finishes

9th Floor Restroom Finishes



Restroom Graphic Wall



Restroom Interior

GLASS WAREHOUSE,
40" VANITY MIRROR

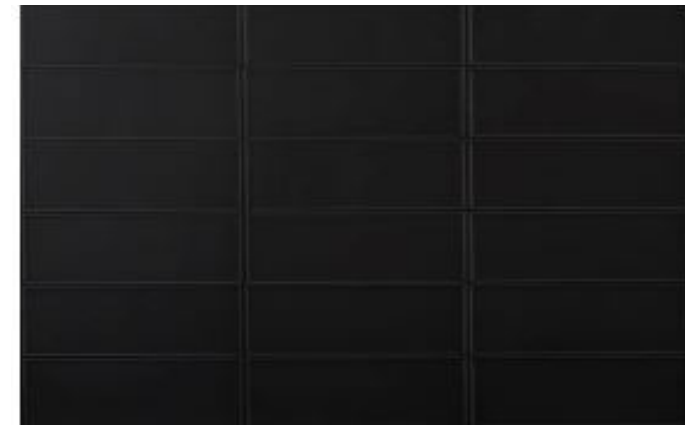


DWELED, 30"
TUBULAR SCONCE

SLOAN, OPTIMA FAUCET



MUUTO, BLACK UNFOLD
PENDANT LIGHT



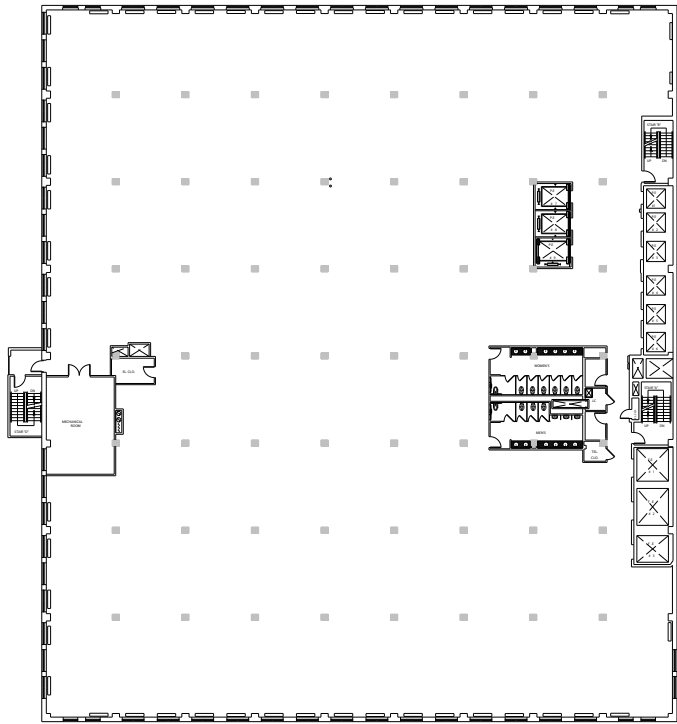
BLACK MATTE SUBWAY TILE WITH BLACK GROUT

PRIVADA CUBICLES, CONCEALED FULL ALUMINUM FRAME



FLOOR 7
45,649 RSF

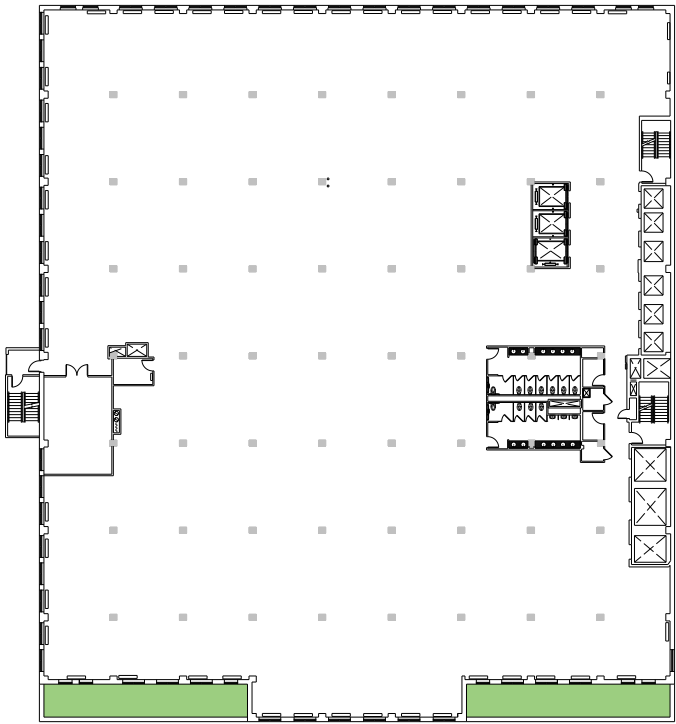
34th Street



33rd Street

FLOOR 8
43,948 RSF
1,184 SF TERRACE

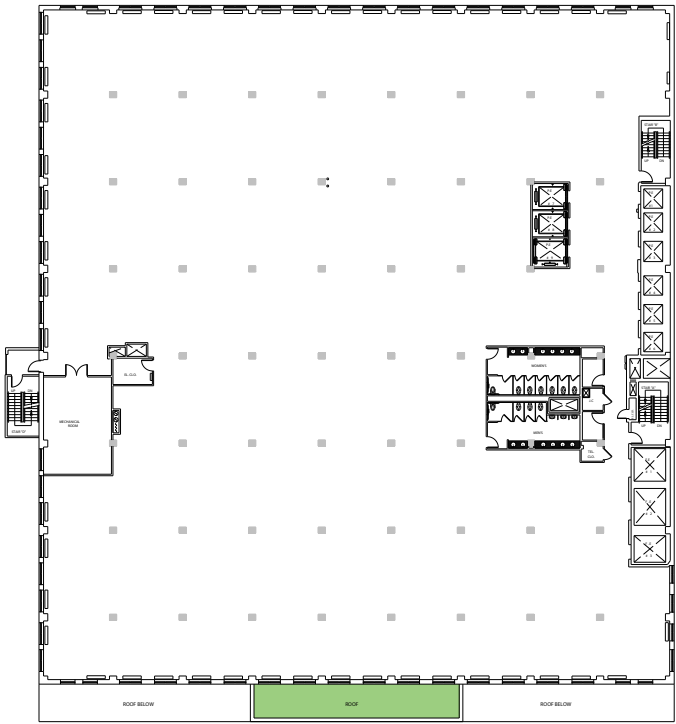
34th Street



33rd Street

FLOOR 9
43,096 RSF
605 SF TERRACE

34th Street



33rd Street

Each floor can accommodate an extremely dense programming need of up to 360 persons.

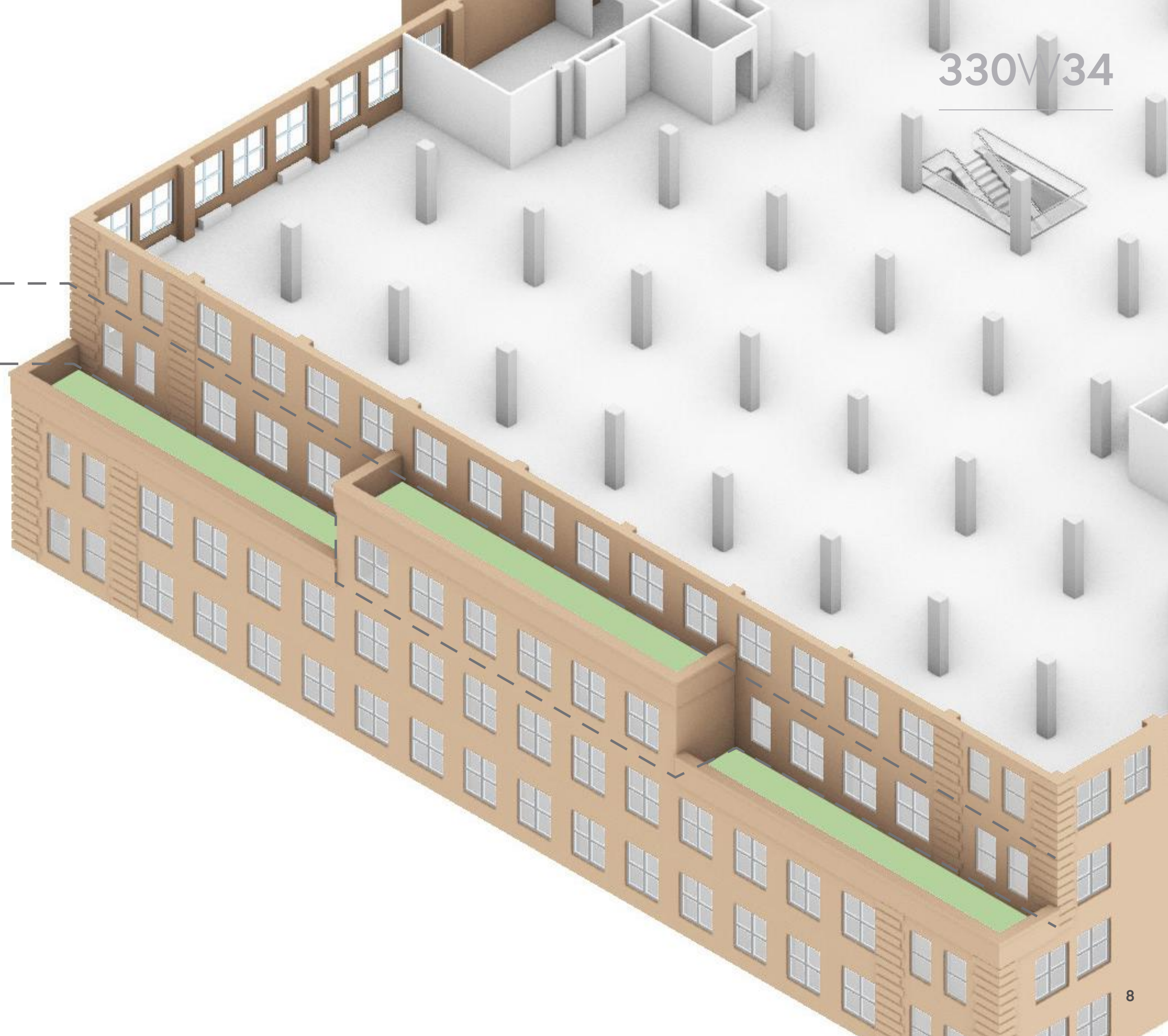
8th & 9th Floor Terraces

330W/34

605 SF

1,184 SF

TOTAL 1,789 SF



360°
CLICK HERE
FOR A 360 VIEW OF
THE TERRACES



8th and 9th Floor Terraces



8th Floor In-Progress Terrace Rendering



8th Floor In-Progress Terrace Rendering



9th Floor In-Progress Terrace Rendering



9th Floor In-Progress Terrace Rendering

Views from 330W34 onto new 33rd Street Green Space

330W34



Views from 330W34 onto new 33rd Street Green Space

330W34



Suite **B** 10,073 RSF

Total Offices	4
Open Workstations	30
Reception	1
TOTAL HEADCOUNT	35
Meeting Rooms	3
Lounges	2
Pantry	1
IT	1
Copy	1

Suite **A** 10,071 RSF

Total Offices	5
Open Workstations	24
Reception	1
TOTAL HEADCOUNT	30
Meeting Rooms	3
Lounges	2
Pantry	1
IT	1
Copy	1

Suite **C** 12,263 RSF

Total Offices	3
Open Workstations	20
Reception	1
TOTAL HEADCOUNT	24
Meeting Rooms	4
Lounges	4
Pantry	1
IT	1
Copy	1

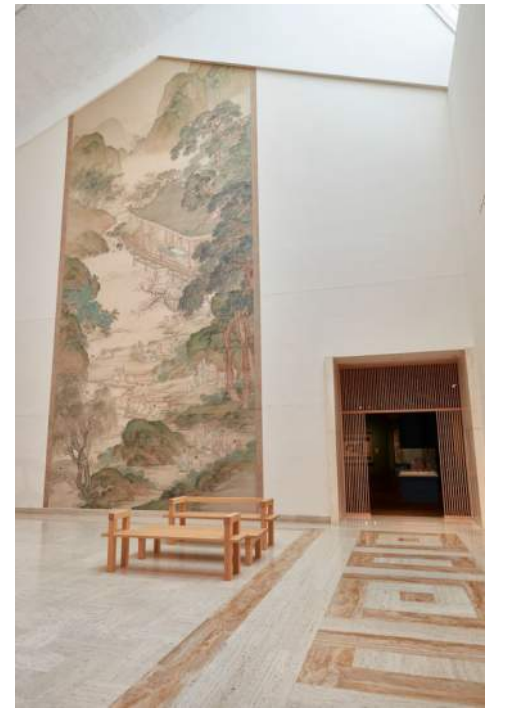
Suite **D** 13,242 RSF

Total Offices	7
Open Workstations	24
Reception	1
TOTAL HEADCOUNT	32
Meeting Rooms	4
Lounges	2
Pantry	1
IT	1
Copy	1



6th Floor Pre-Builts
LOOK + FEEL

330W/34



Common Corridor



6th Floor In-Progress Elevator Lobby Rendering



6th Floor In-Progress Common Phone Room Rendering



6th Floor In-Progress Corridor Rendering

Interior Finishes



In-Progress Suite Reception Rendering



In-Progress Pantry Rendering



In-Progress Meeting Booth Rendering



In-Progress Library Meeting Room Rendering

Proposed 33rd Street NEW BUILDING LOBBY ENTRANCE



RESTAURANT

NEW 33RD STREET
BUILDING LOBBY

3 BAY LOADING

PRIVATE
LOBBY
ENTRANCE*



New 33rd Street Restaurant



New 33rd Street Building Lobby



Private Lobby Entrance

*For Large Block Commitment

Bar Primi

FULL SERVICE INDOOR/OUTDOOR RESTAURANT OPENING WINTER 2022 ON 33RD STREET AT 330 WEST 34TH STREET



Proposed 33rd Street Building Lobby



Proposed 33rd Street Lobby Entrance



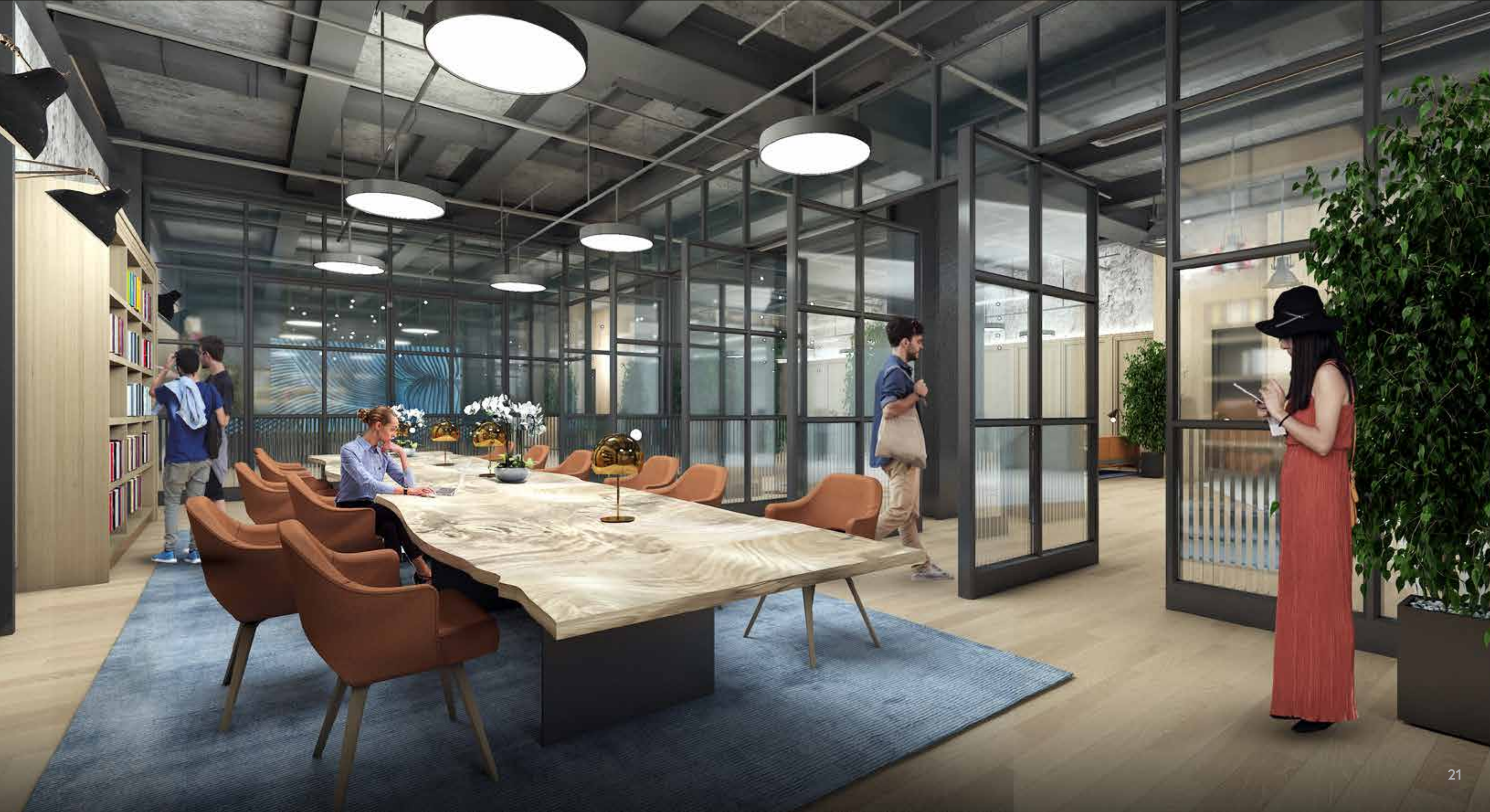
Proposed 33rd Street Lobby Entrance

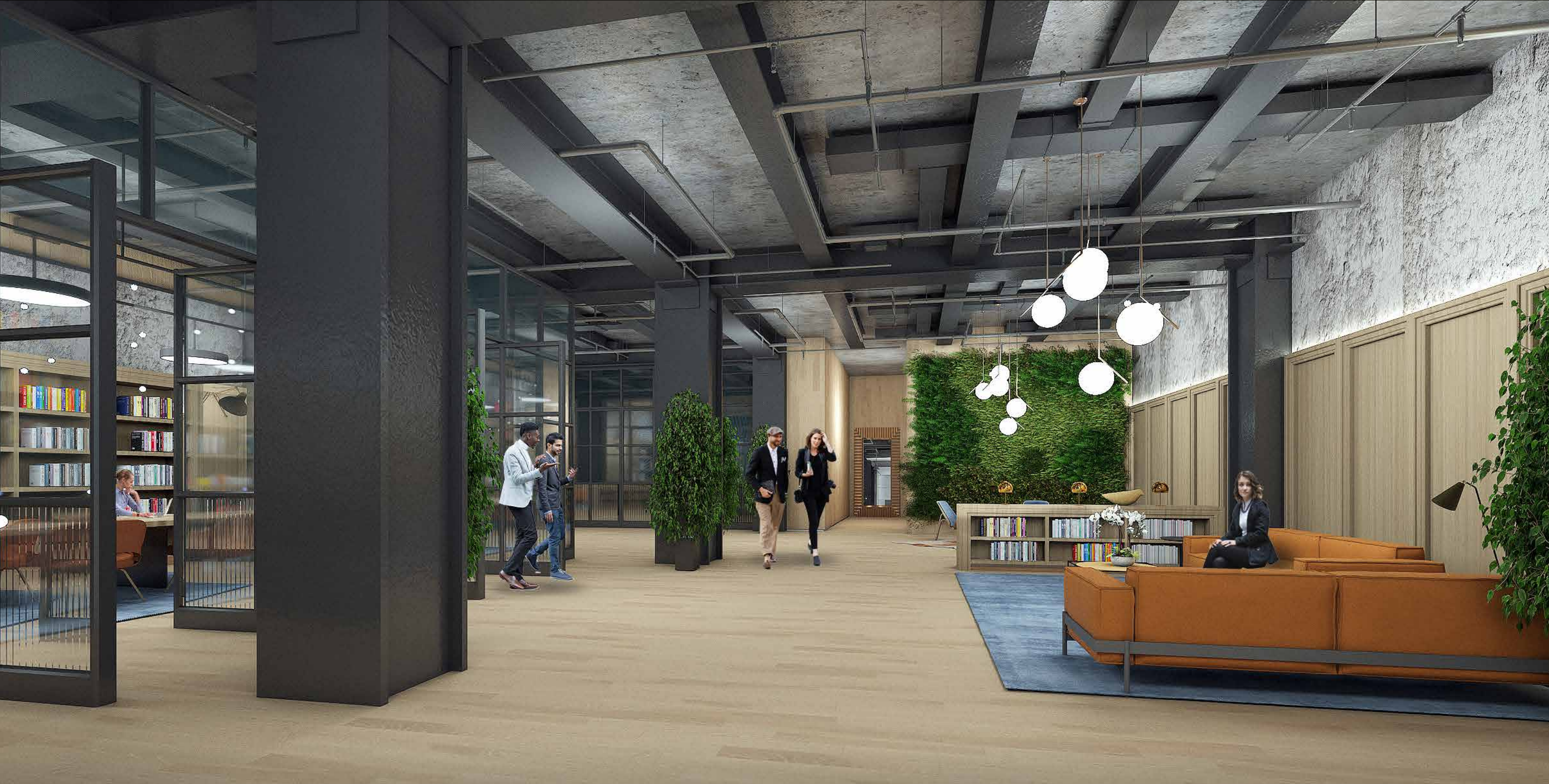


Proposed 33rd Street Lobby Cafe

330W34

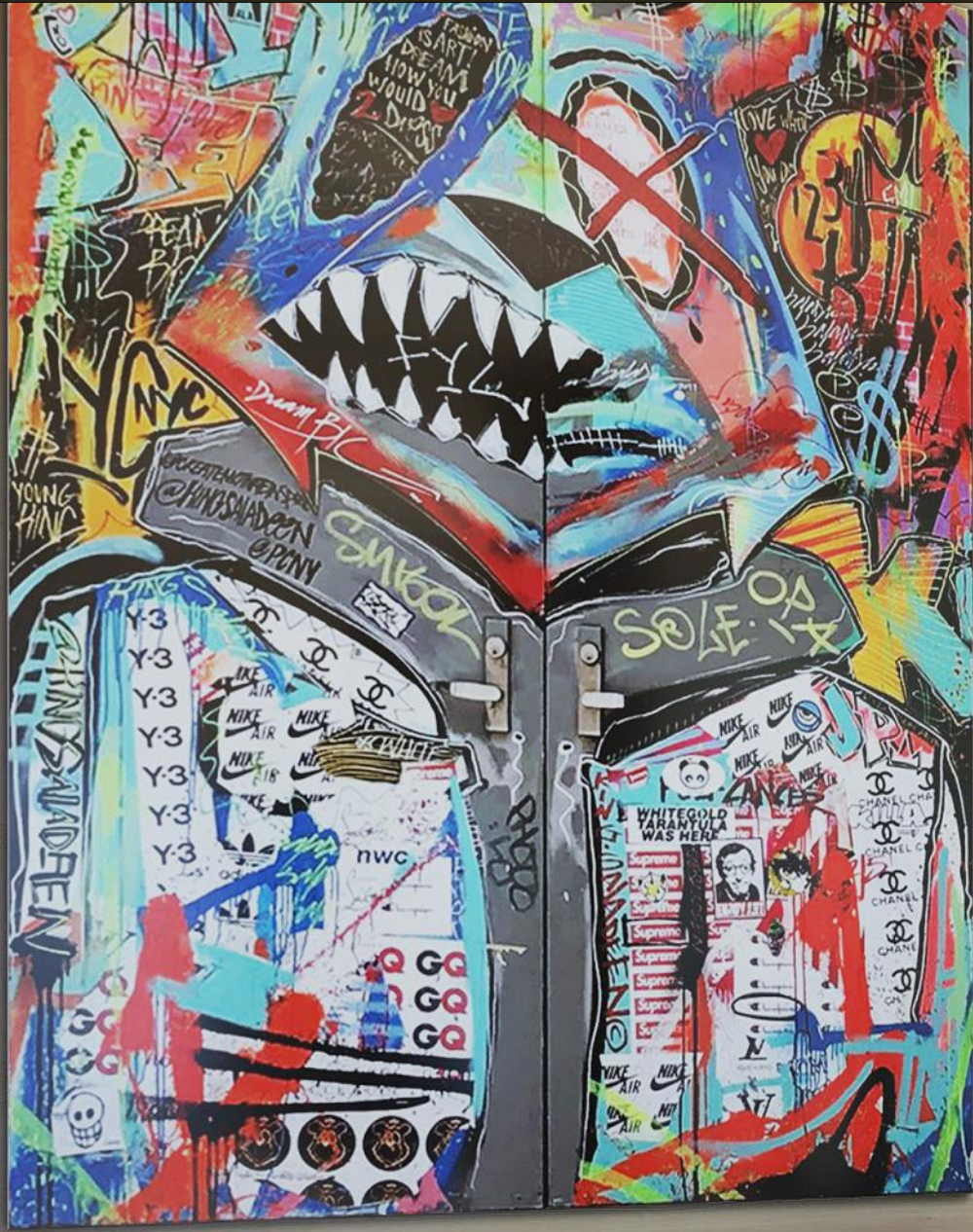






Proposed New Building Amenity Space from 34th Street Lobby

330W34



Proposed New 34th Street Building Lobby

330W34



330
WEST 34TH

THE PENN DISTRICT

FOOD & BEVERAGE LOCATED
DIRECTLY ACROSS FROM 330W34



Bar Primi Opening Winter 2022 at 330 West 34th Street



Restaurant Overlooking Moynihan Train Hall



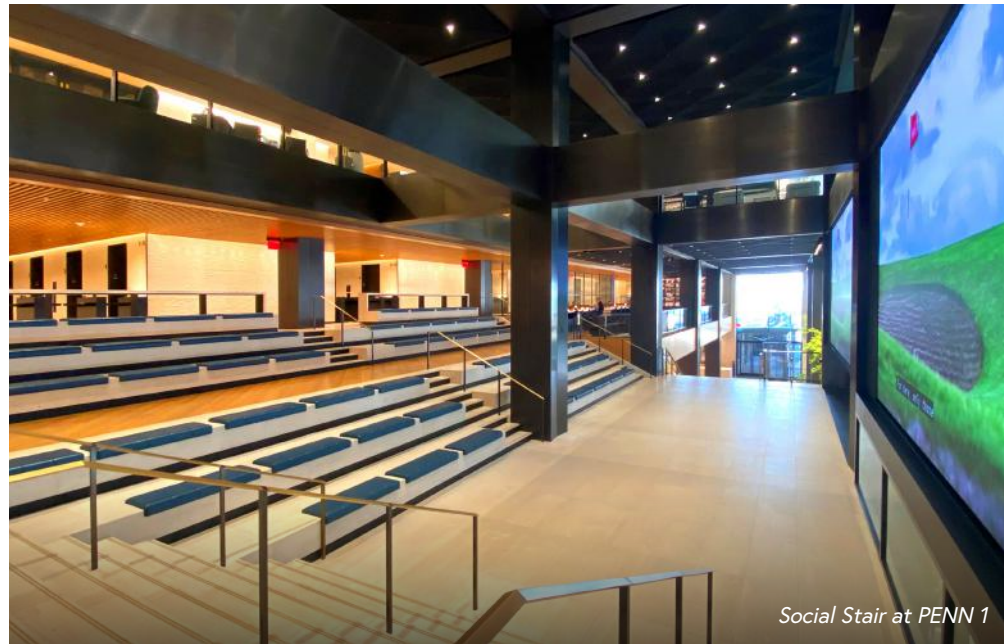
Restaurant Located at 33rd and 9th Avenue at Farley



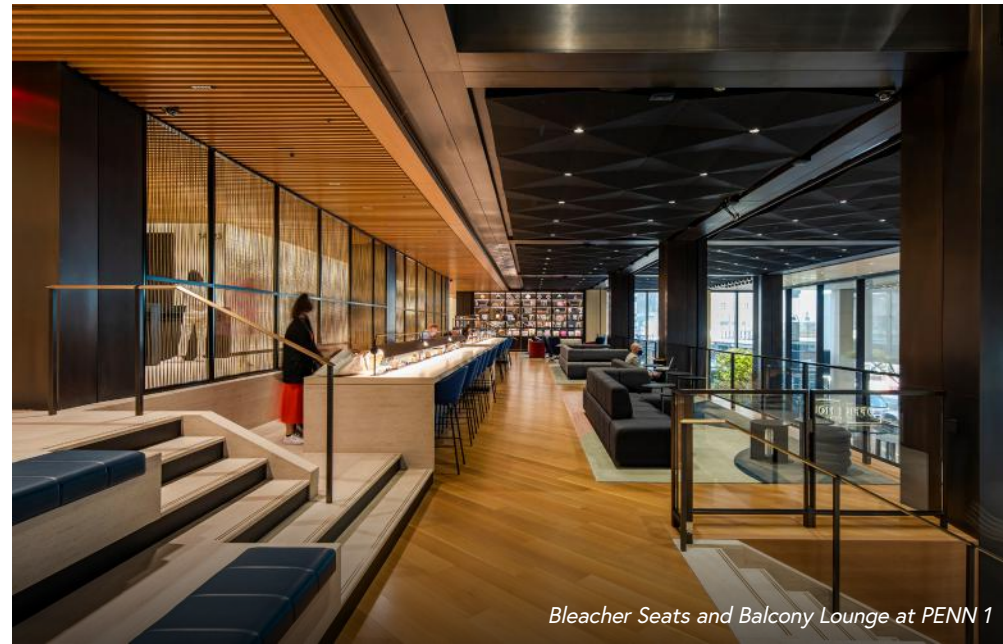
The Landing Restaurant Located in PENN 1



Moynihan Food Hall



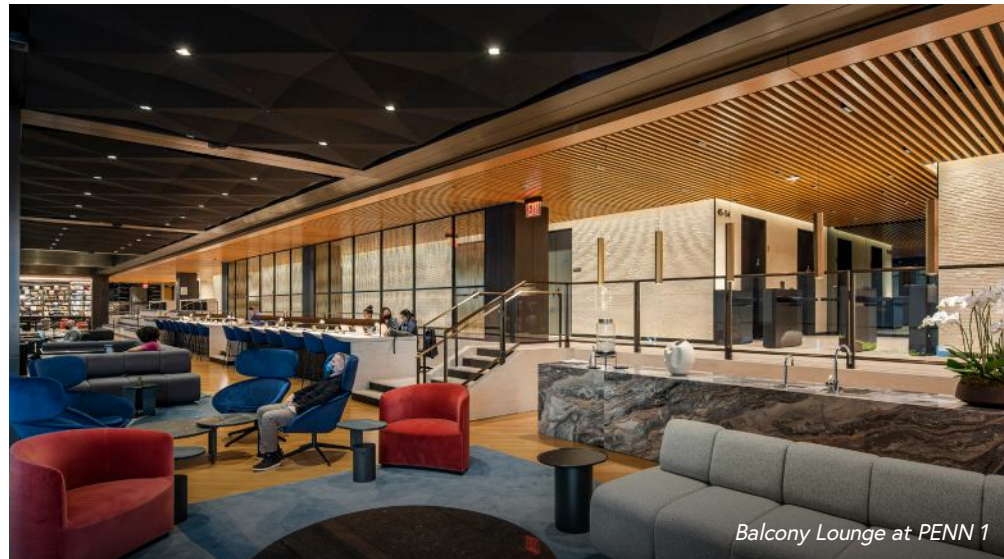
Social Stair at PENN 1



Bleacher Seats and Balcony Lounge at PENN 1



Fireplace Lounge at PENN 1



Balcony Lounge at PENN 1



Amenity Lounge at PENN 2

THE PENN DISTRICT

AMENITIES OPEN TO ALL
330W34 TENANTS



Town Hall at PENN 2



Rooftop Tenant Lounge at PENN 2



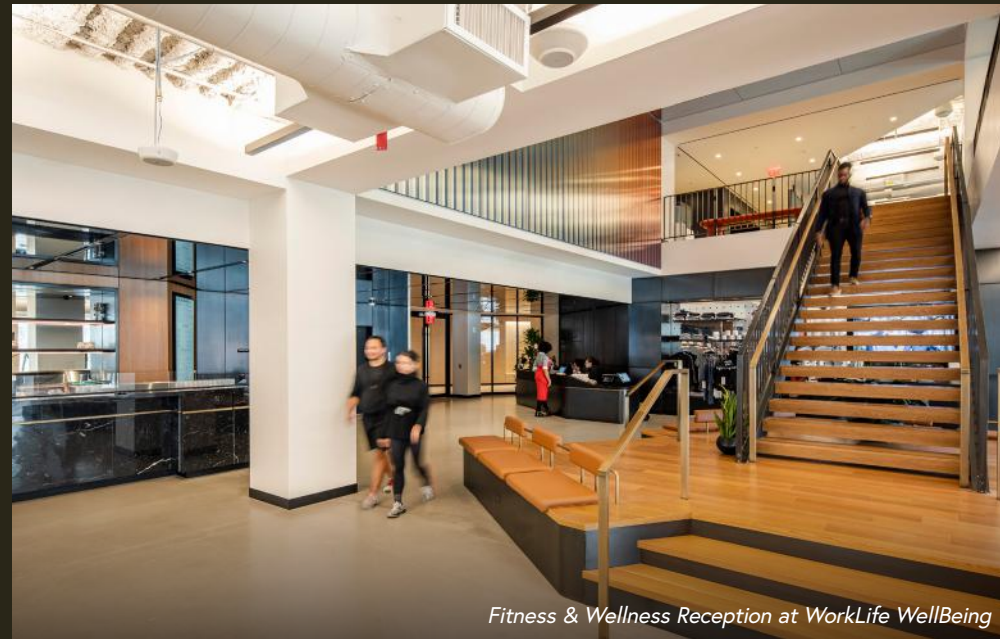
Rooftop Park at PENN 2

THE PENN DISTRICT

WorkLife WELLBEING
by EXOS
35,000 SF FITNESS + WELLNESS CENTER

WorkLife HEALTH
by COLUMBIA
PHYSICIAN AND NURSING SERVICES

OPEN TO ALL 330W34 TENANTS



Fitness & Wellness Reception at WorkLife WellBeing



Cardio Floor at WorkLife WellBeing



Fitness Studio at WorkLife WellBeing



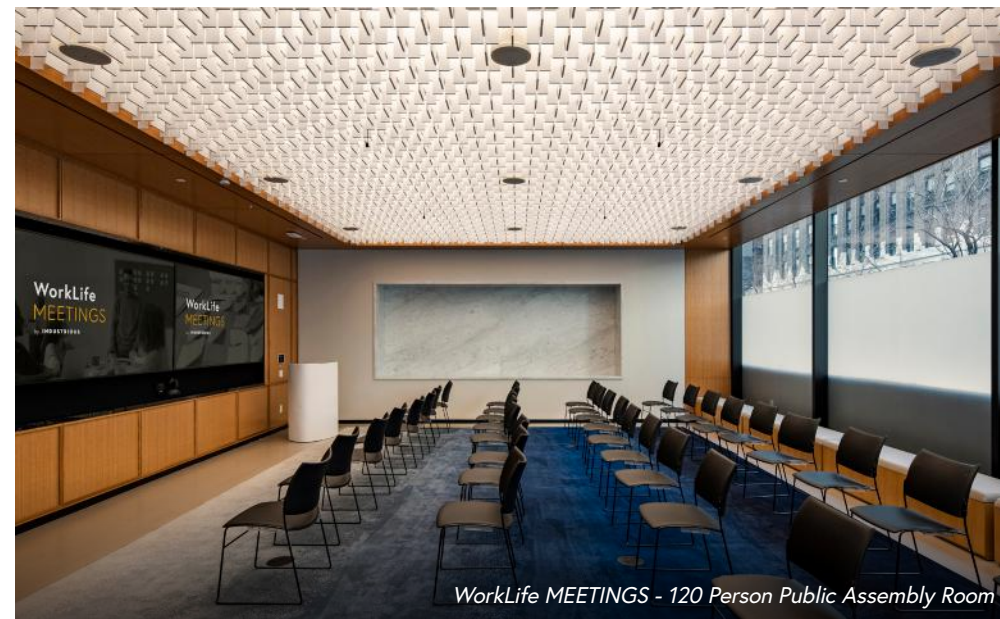
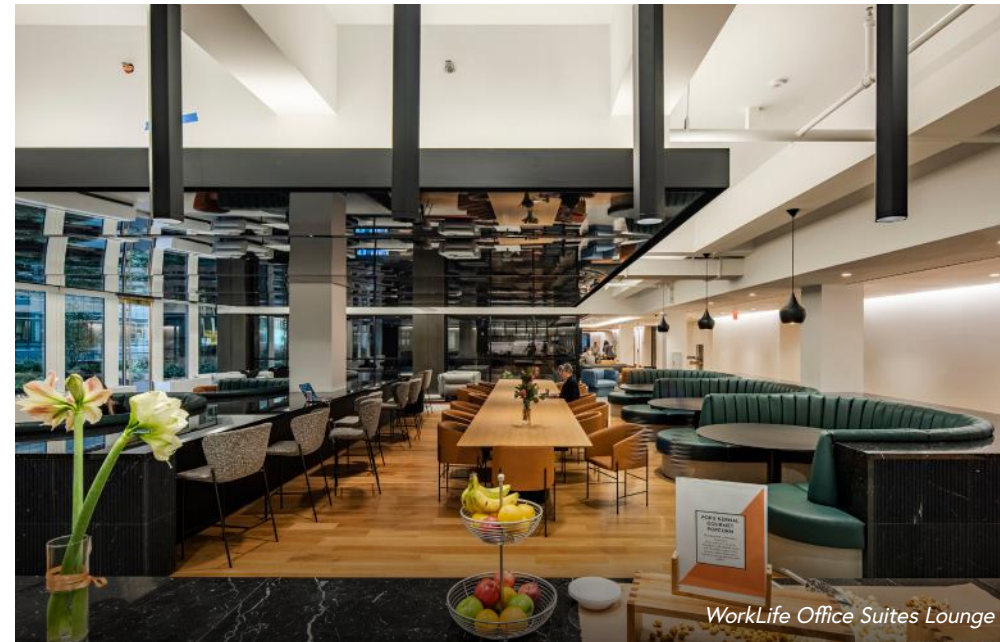
Spin Studio at WorkLife WellBeing



WorkLife Health at PENN 1



Physical Therapy Studio at WorkLife Health



THE PENN DISTRICT

WorkLife OFFICE SUITES

by **INDUSTRIOUS**

60,000 SF OF FLEXIBLE WORK SPACE

WorkLife MEETINGS

by **INDUSTRIOUS**

20,000 SF OF CONFERENCING

OPEN TO ALL 330W34 TENANTS



330W34

Josh Glick

Executive Vice President
Director of PENN District Leasing
JGlick@vno.com
(212) 894-7413

Jared Silverman

Vice President
JSilverman@vno.com
(212) 894-7458

VORNADO
REALTY TRUST