

**FOR LEASE**

335 15th Street

San Diego, California 92101



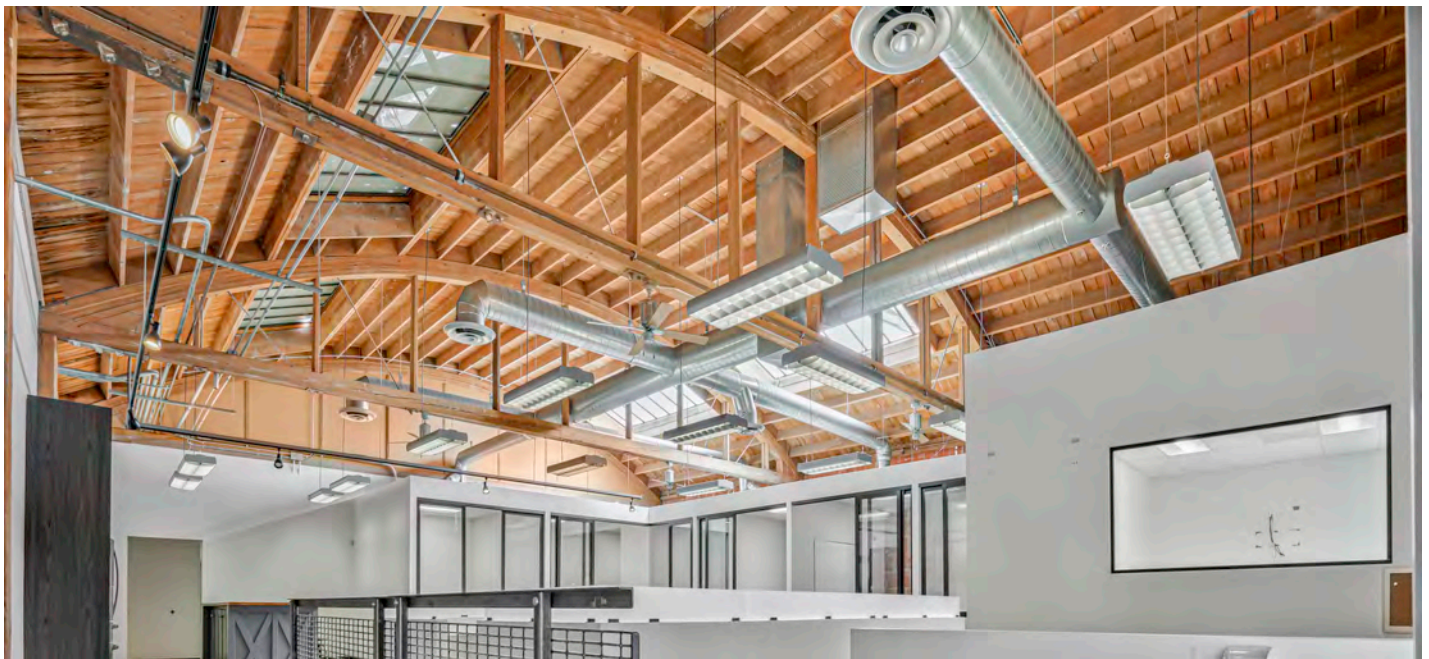
# Office Space For Lease in East Village

**EMMETT CAHILL**  
619.243.8470  
ecahill@qfcre.com  
BRE #02033604

**PETER WRIGHT**  
619.243.8450  
pwright@qfcre.com  
BRE #01846272

**DOMINICK MARTINEZ**  
619.243.8468  
dmartinez@qfcre.com  
BRE #02191570

*The information contained here has been obtained from sources considered to be reliable, but no guarantee of its accuracy is made by this company. In addition, no representation is made respecting zoning, condition of title, dimensions or any matters of a legal or environmental nature. Such matters should be referred to legal counsel for determination. Terms and conditions are subject to change without prior notice. Subject to errors and omissions.*



## SPACE AVAILABLE

±3,500 RSF

Available Immediately

## LEASE RATE

\$2.00 PSF + Utilities

## PROPERTY HIGHLIGHTS

- Prominent double glass doors entry from building exterior
- Large open office, reception, conference room, 6 private offices, break room, 2 private restrooms & IT/storage
- Kitchen comes fully-furnished with refrigerator and dishwasher
- Parking available in attached, gated lot
- Lofted bow-truss ceiling with skylights provides ample natural light

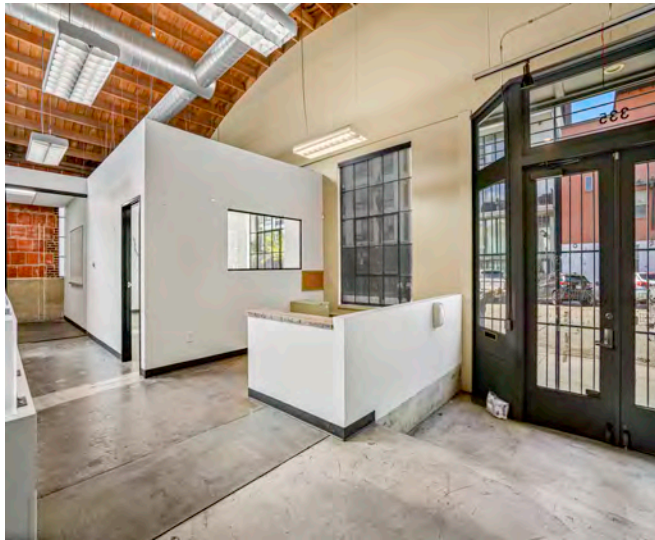
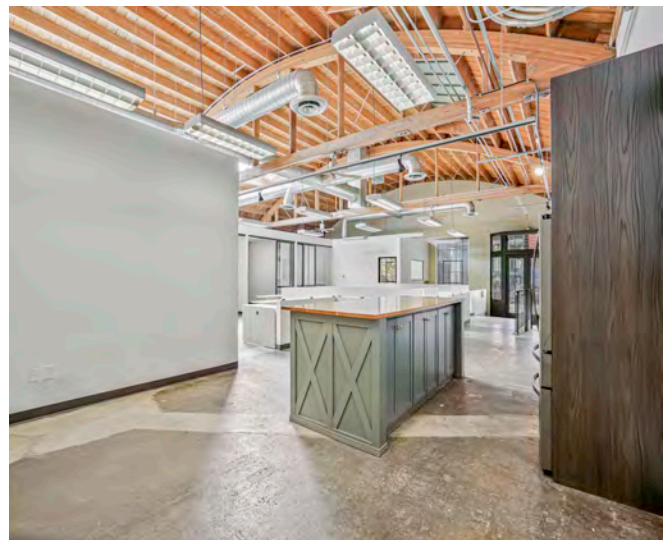
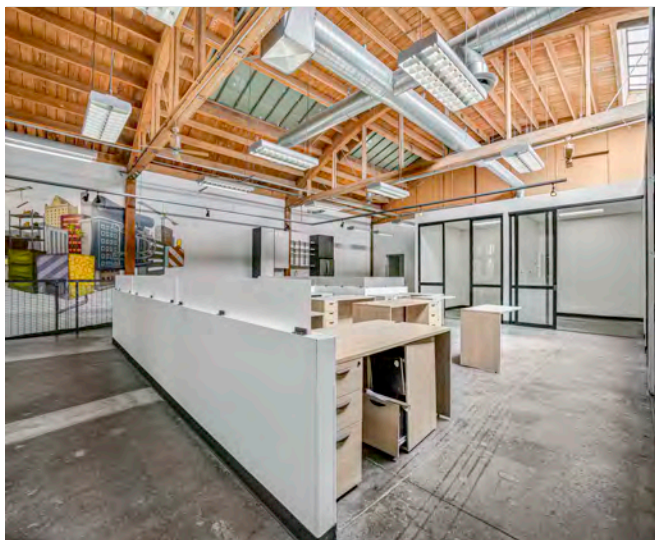
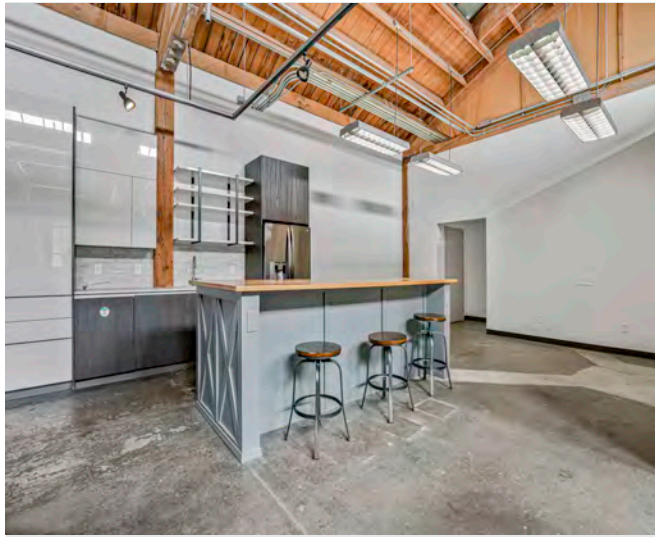


**EMMETT CAHILL**  
619.243.8470  
ecahill@qfcre.com  
BRE #02033604

**PETER WRIGHT**  
619.243.8450  
pwright@qfcre.com  
BRE #01846272

**DOMINICK MARTINEZ**  
619.243.8468  
dmartinez@qfcre.com  
BRE #02191570

*The information contained here has been obtained from sources considered to be reliable, but no guarantee of its accuracy is made by this company. In addition, no representation is made respecting zoning, condition of title, dimensions or any matters of a legal or environmental nature. Such matters should be referred to legal counsel for determination. Terms and conditions are subject to change without prior notice. Subject to errors and omissions.*



## PHOTOS

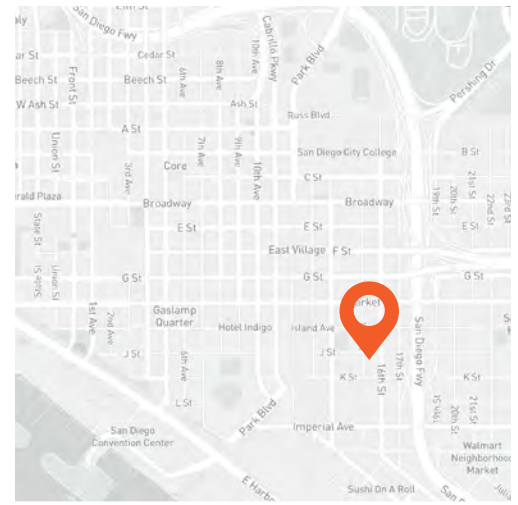
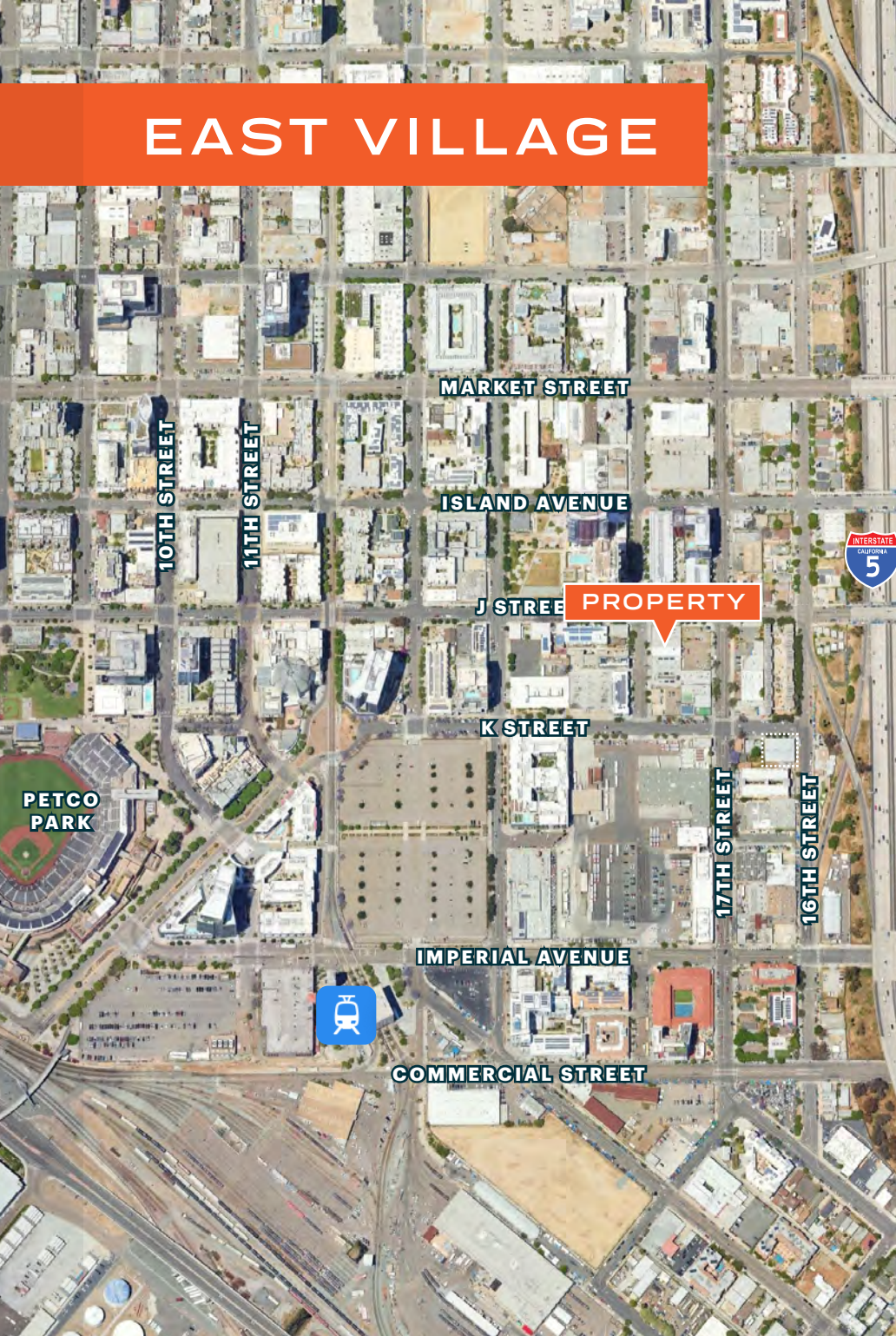
**EMMETT CAHILL**  
619.243.8470  
ecahill@qfcre.com  
BRE #02033604

**PETER WRIGHT**  
619.243.8450  
pwright@qfcre.com  
BRE #01846272

**DOMINICK MARTINEZ**  
619.243.8468  
dmartinez@qfcre.com  
BRE #02191570

*The information contained here has been obtained from sources considered to be reliable, but no guarantee of its accuracy is made by this company. In addition, no representation is made respecting zoning, condition of title, dimensions or any matters of a legal or environmental nature. Such matters should be referred to legal counsel for determination. Terms and conditions are subject to change without prior notice. Subject to errors and omissions.*

# EAST VILLAGE



- Two blocks to I-5 freeway
- Walking distance to Petco Park, Basic Pizza, Copa Vida Coffee, Mission Brewery, The BXNG Club, Fault Line Park, The Mission Cafe, and the Convention Center
- Close walk to Gaslamp and East Village restaurants, shops, and amenities

**2,393**

Residential  
Units Under  
Construction

**1.6M**

Square Feet  
of Office Space

**3**

Major  
Entertainment  
Venues

**3**

Blocks to  
Freeways I-5 &  
Hwy 163

**EMMETT CAHILL**  
619.243.8470  
ecahill@qfcre.com  
BRE #02033604

**PETER WRIGHT**  
619.243.8450  
pwright@qfcre.com  
BRE #01846272

**DOMINICK MARTINEZ**  
619.243.8468  
dmartinez@qfcre.com  
BRE #02191570

*The information contained here has been obtained from sources considered to be reliable, but no guarantee of its accuracy is made by this company. In addition, no representation is made respecting zoning, condition of title, dimensions or any matters of a legal or environmental nature. Such matters should be referred to legal counsel for determination. Terms and conditions are subject to change without prior notice. Subject to errors and omissions.*

**FOR LEASE**

325 15th Street  
San Diego, California 92101



# Contact Information

**QFC REAL ESTATE**  
1495 Pacific Highway, Suite 450  
San Diego, CA 92101  
619.243.8454 • [qfcre.com](http://qfcre.com)

**EMMETT CAHILL**  
619.243.8470  
[ecahill@qfcre.com](mailto:ecahill@qfcre.com)  
BRE #02033604

**PETER WRIGHT**  
619.243.8450  
[pwright@qfcre.com](mailto:pwright@qfcre.com)  
BRE #01846272

**DOMINICK MARTINEZ**  
619.243.8468  
[dmartinez@qfcre.com](mailto:dmartinez@qfcre.com)  
BRE #02191570

The information contained here has been obtained from sources considered to be reliable, but no guarantee of its accuracy is made by this company. In addition, no representation is made respecting zoning, condition of title, dimensions or any matters of a legal or environmental nature. Such matters should be referred to legal counsel for determination. Terms and conditions are subject to change without prior notice. Subject to errors and omissions.