



5111 GLEN ALDEN DR, RICHMOND, VA 23231

Industrial Warehouse For Lease

15,190 SF available

Located near I-64, I-95 and I-295

- Available November 1, 2025
- 19' ceiling height
- 2 dock high doors - 8'x10'
- 22' x 48' column spacing
- Zoned M-1
- Central location near the airport and major highways, I-64, I-95 and I-295
- Well parked
- Fenced lot
- Contact agent for pricing

Copyright © 2025 Colliers International. Information herein has been obtained from sources deemed reliable, however its accuracy cannot be guaranteed. The user is required to conduct their own due diligence and verification.

CONTACT US

Rich McDaniel

(Owner/Agent)

Associate

+1 540 424 7286

richmond.mcdaniel@colliers.com

Lee Cherwek

(Owner/Agent)

Vice President

+1 703 244 5977

lee.cherwek@colliers.com

Colliers

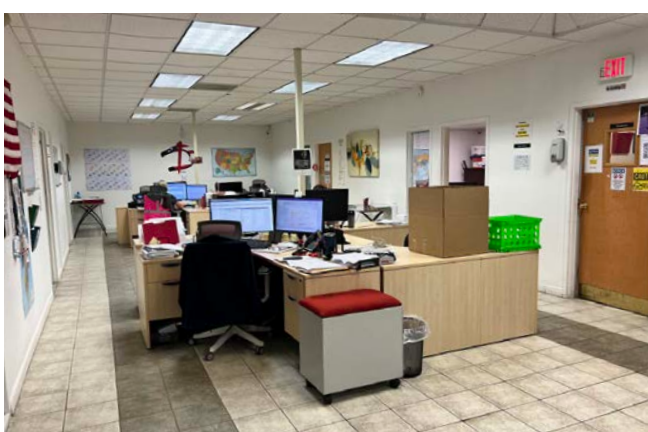
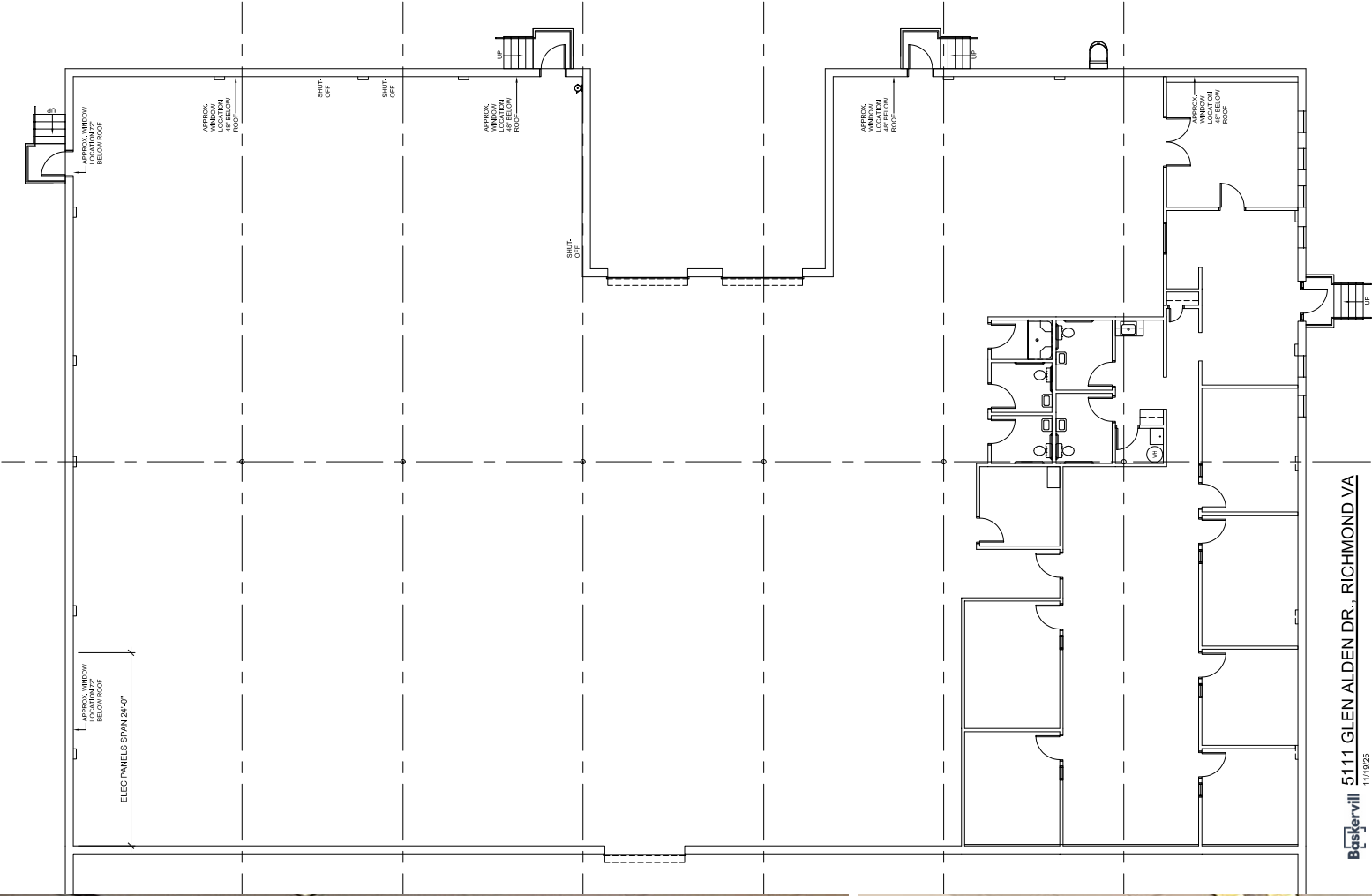
2221 Edward Holland Dr
Suite 600 | Richmond, VA

P: +1 804 320 5500

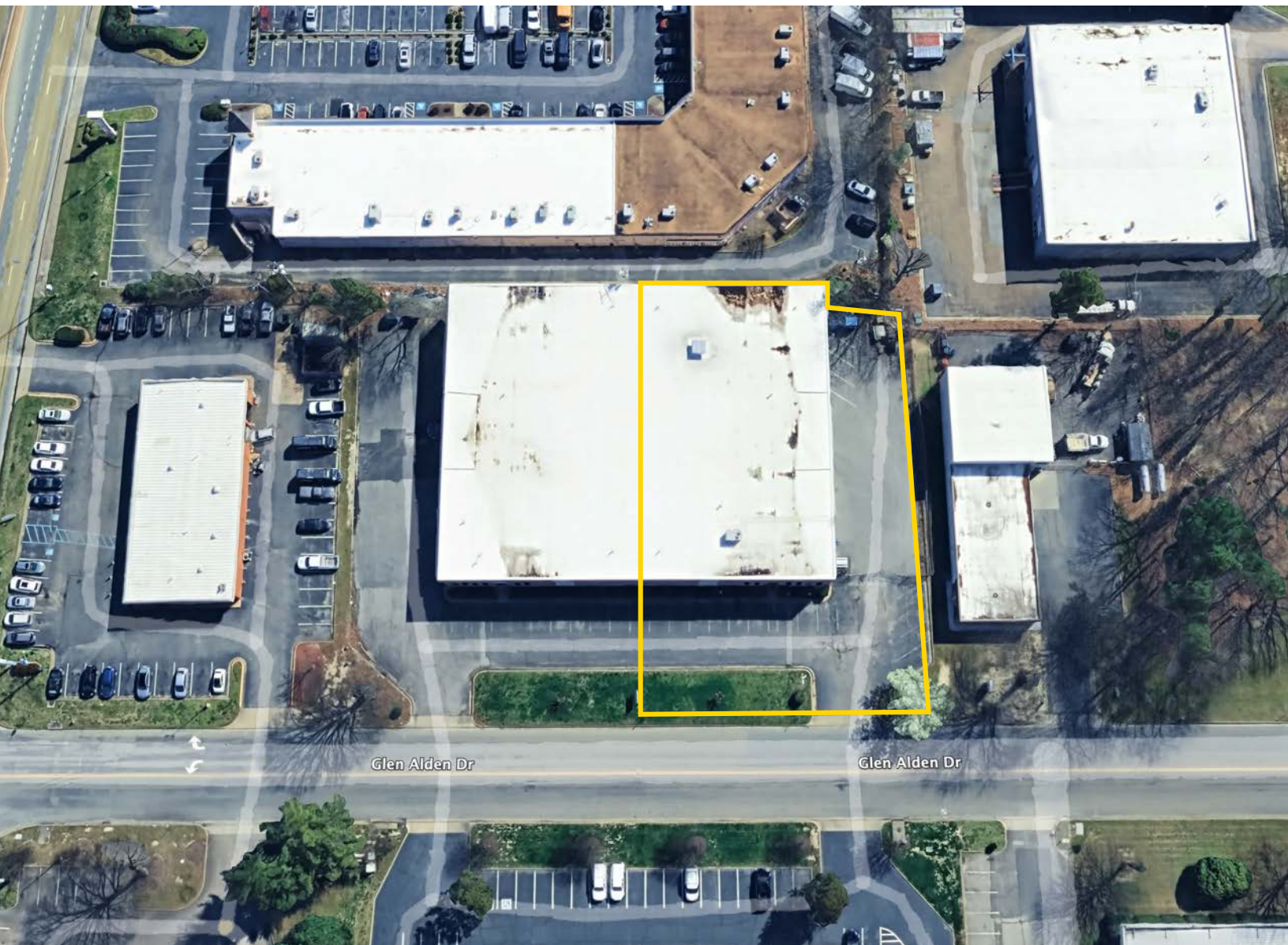
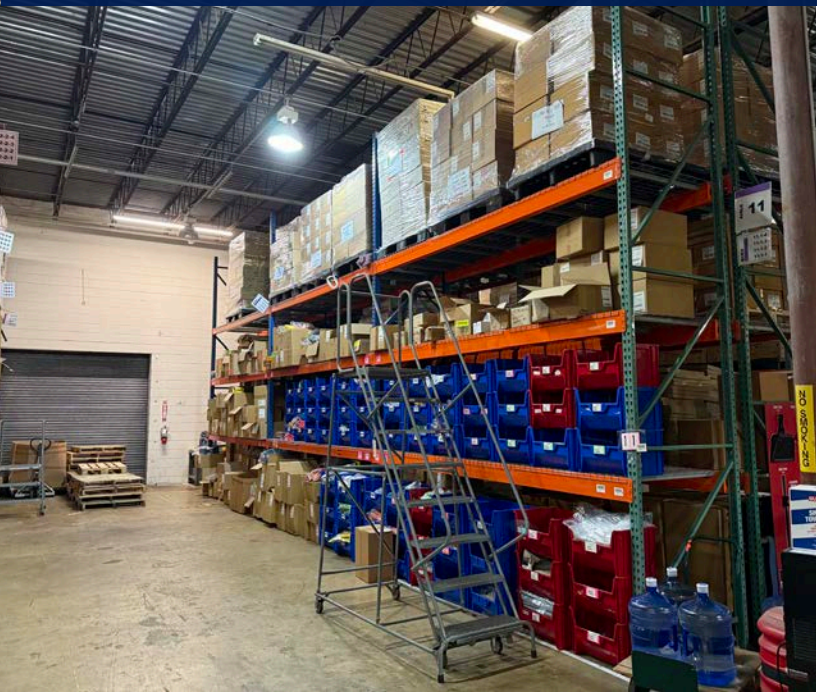
colliers.com

5111 Glen Alden Dr, Richmond, VA

15,190 SF



5111 Glen Alden Dr, Richmond, VA



5111 Glen Alden Dr, Richmond, VA



CONTACT US

Rich McDaniel

(Owner/Agent)

Associate

+1 540 424 7286

richmond.mcdaniel@colliers.com

Lee Cherwek

(Owner/Agent)

Vice President

+1 703 244 5977

lee.cherwek@colliers.com



Colliers

2221 Edward Holland Dr

Suite 600 | Richmond, VA

P: +1 804 320 5500

colliers.com