



**For Sublease**

**49,864 SF**

**Contact us:**

**Mike Kay**

Vice Chairman  
+1 214 208 4503  
mike.kay@colliers.com

# 1300 N Central Expy Allen, TX 75013

## Property Highlights

- Square Footage: 49,864
  - Office: 19,764 SF
  - Warehouse (A/C): 26,000 SF
  - Warehouse (Non-A/C): 4,100 SF
- Available: Immediately
- Expiration: March 31, 2027
- Rate: \$14.00
  - NNN: \$4.04
- FF&E: some available
- Freeway Exposure
- Parking: 4/1,000 SF
- Clear Height: 20'

This document/email has been prepared by Colliers for advertising and general information only. Colliers makes no guarantees, representations or warranties of any kind, expressed or implied, regarding the information including, but not limited to, warranties of content, accuracy and reliability. Any interested party should undertake their own inquiries as to the accuracy of the information. Colliers excludes unequivocally all inferred or implied terms, conditions and warranties arising out of this document and excludes all liability for loss and damages arising there from. This publication is the copyrighted property of Colliers and /or its licensor(s). © 2024. All rights reserved. This communication is not intended to cause or induce breach of an existing listing agreement. Colliers International North Texas, LLC

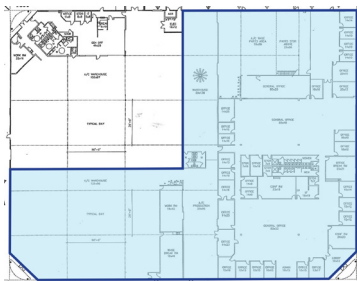
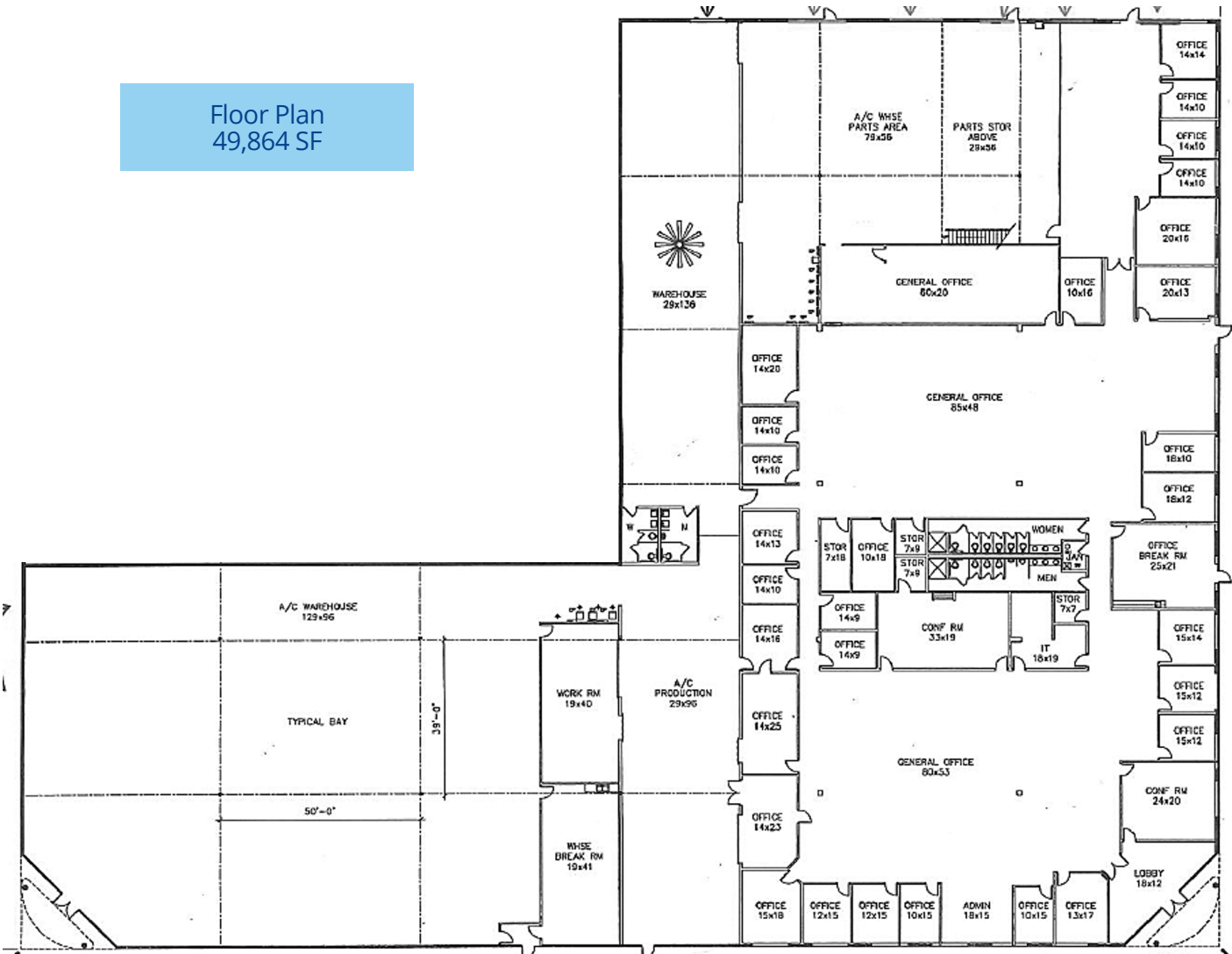
**Colliers**

1717 McKinney Ave, Suite 900  
Dallas, TX 75202

Accelerating success.

# Premises Layout

Floor Plan  
49,864 SF



# Premises Gallery

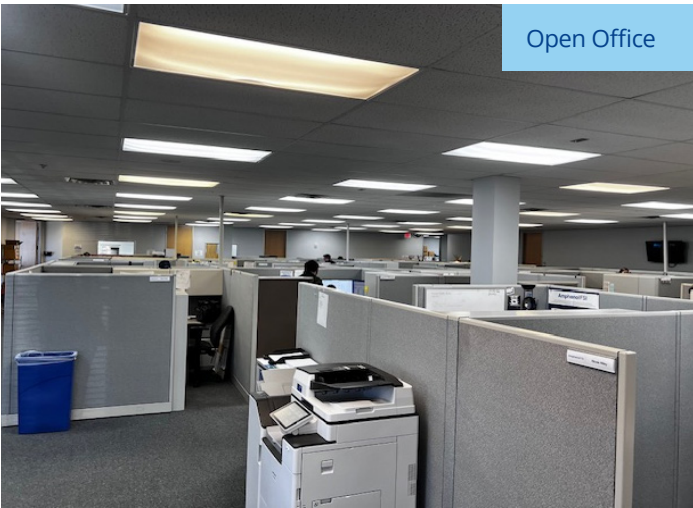
Lobby



Conference Room



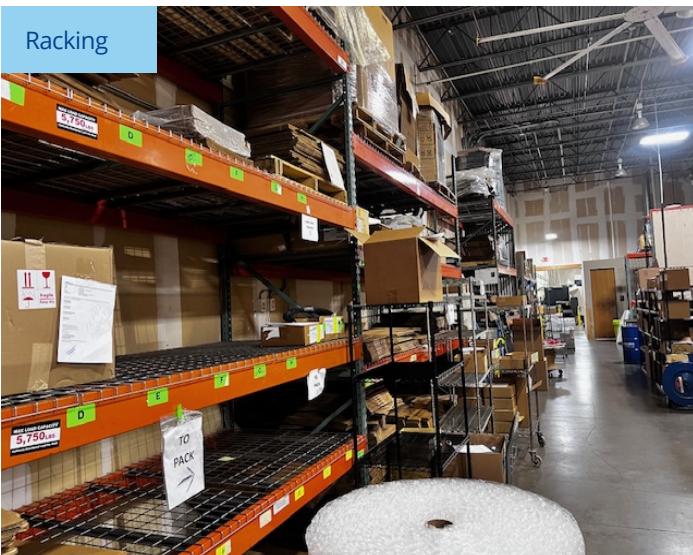
Open Office



Break Room



Racking



Production Room

