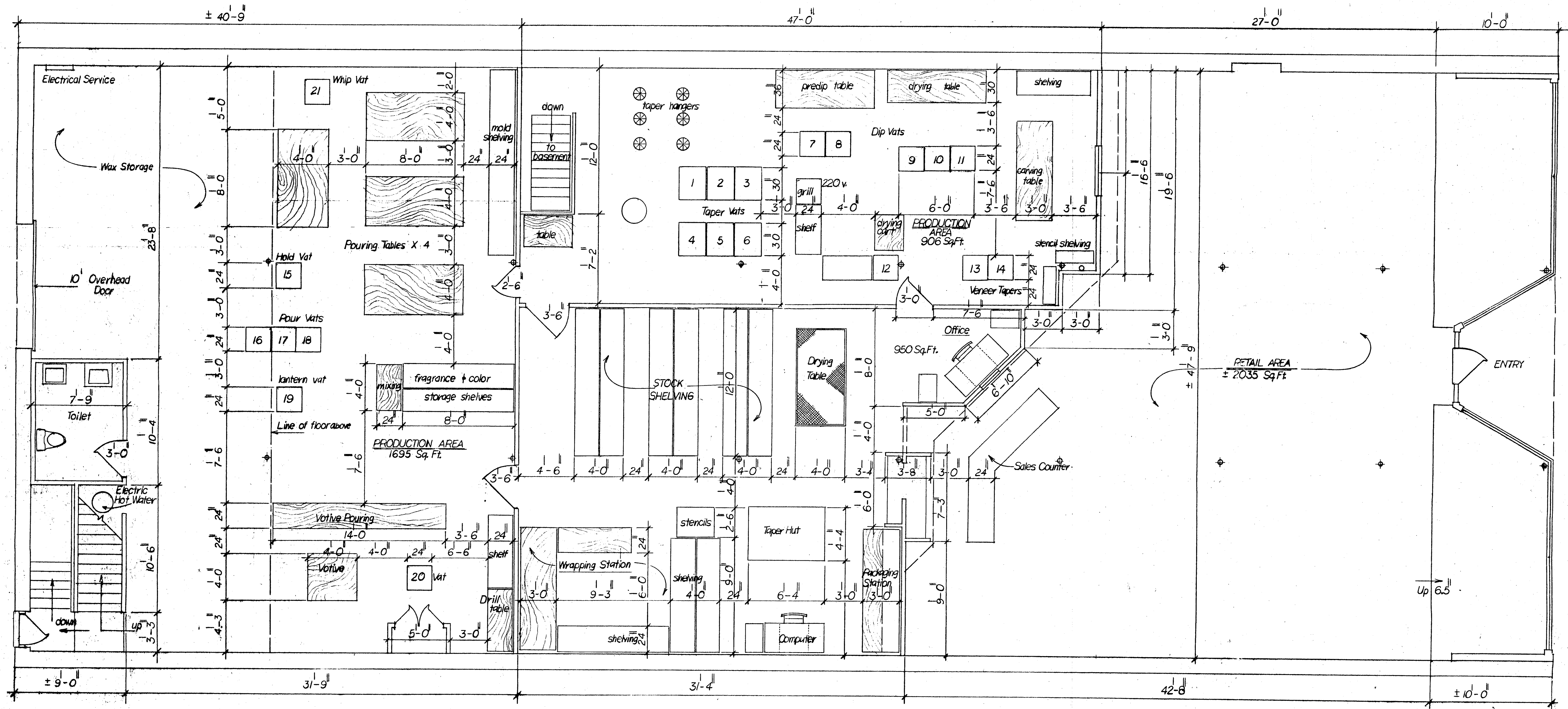
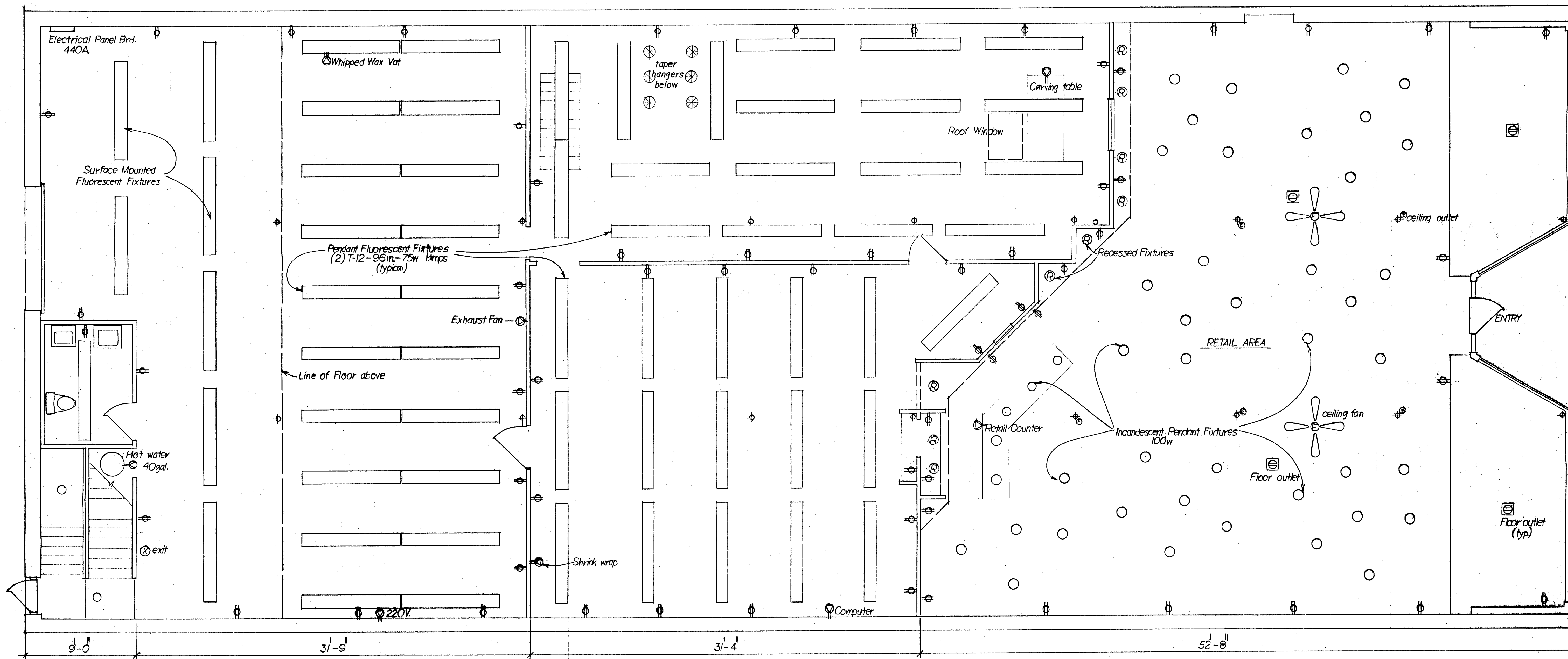


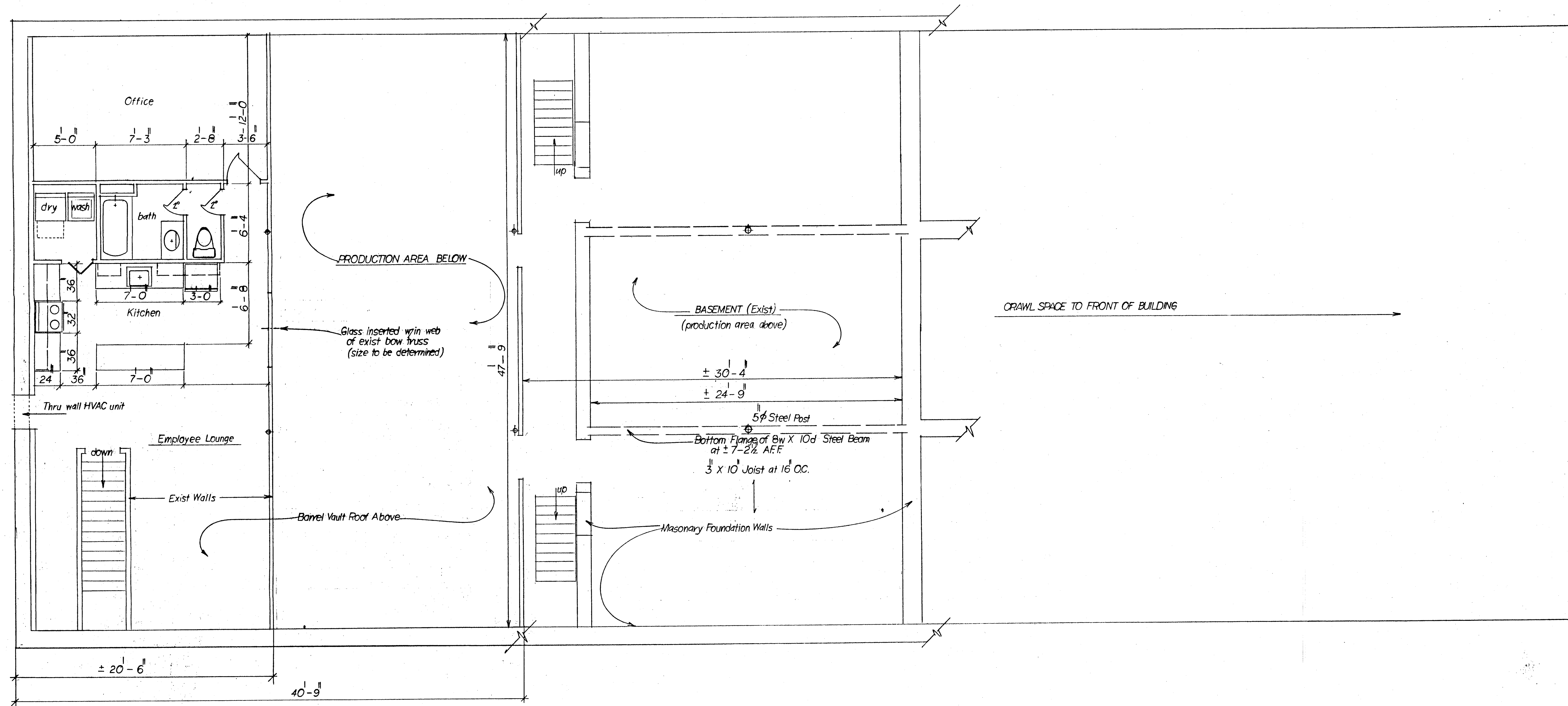
NOTE: - VATS 1-20 ARE ALL 220 Volt UNITS-3500W, each



WAXMAN CANDLES		CHICAGO
SCALE: 1/4" = 1'-0"	APPROVED BY	DRAWN BY
DATE: March 96		S. Cargill
PRODUCTION and RETAIL LAYOUT		
POINT OF ORIGIN DESIGNS		DRAWING NUMBER



WAXMAN		
SCALE: 1/4" = 1'-0"	APPROVED BY	DRAWN BY
DATE: March '96		S. N. Correll
LIGHTING FIXTURES - GENERAL ELECTRICAL OUTLETS		
POINT OF ORIGIN DESIGNS		DRAWING NUMBER



WAXMAN	
SCALE: 1/4" = 1'-0"	APPROVED BY
DATE:	DRAWN BY SN Carroll
DRAWING NUMBER	