

734 Main Street, Los Angeles, CA 90014 | Creative Office & Retail For Sale



A DIVISION OF



LEE &
ASSOCIATES



Property Information

PREMISES Basement: 3,258 SF
1st Floor + Mezzanine: 3,799 SF - 6,689 SF
2nd Floor: 4,931 SF
3rd Floor: 4,907 SF
4th Floor: 4,931 SF

Total: 21,458 SF
24,716 SF w/basement

PRICE Contact Agent

OCCUPANCY Immediate

FEATURES

- Office + Retail Building in DTLA's Fashion District
- Full Building Renovation Just Completed!
- New Spec Suite Includes Open Plan with Glass Office, Modern Kitchen, Upgraded Lighting, & Polished Wood Floors
- Ground Floor Retail Space Includes Dramatic, High Ceilings, New Glass Storefront, Ample Natural Light & Signage Opportunity

CONTACTS **Keith Fielding**

310.899.2719
kfielding@leewestla.com
AGT DRE 01729915

Tommy Isola

310.899.2709
tisola@leewestla.com
AGT DRE 01974024

Tibor Lody, SIOR

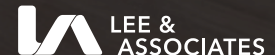
310.899.2720
tlody@leewestla.com
AGT DRE 01261129

Serge Sarkissian

310.899.2739
ssarkissian@leewestla.com
AGT DRE 01929449



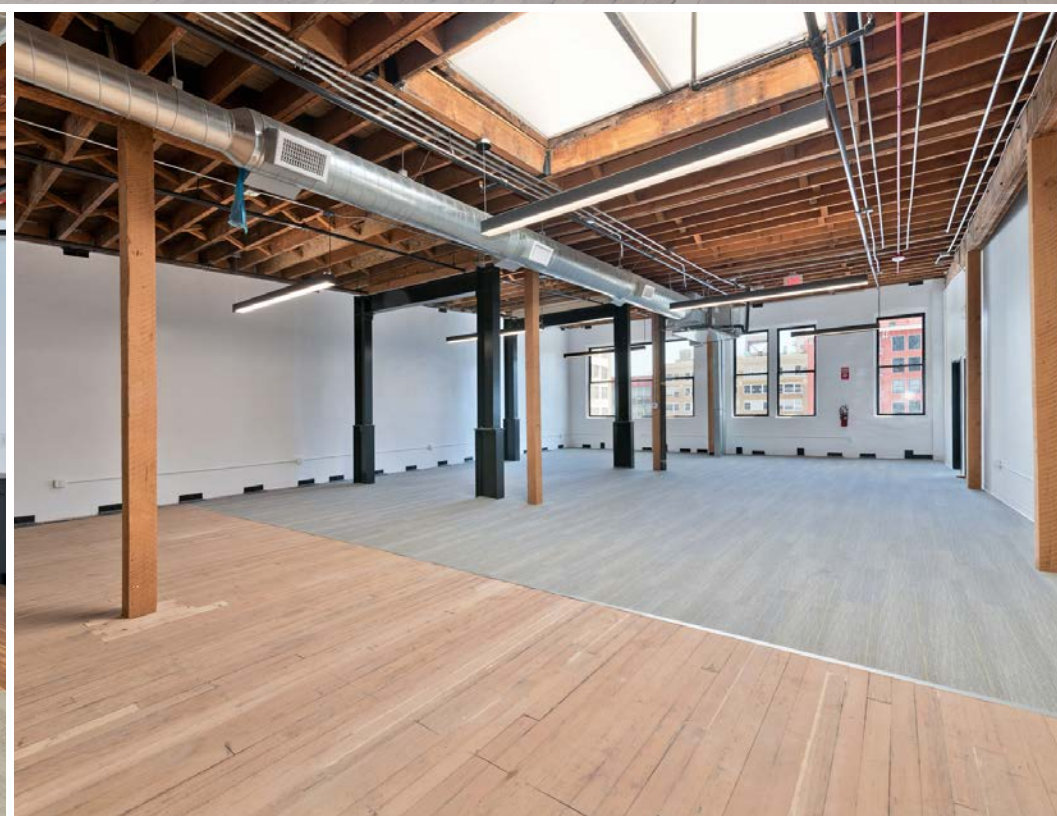
A DIVISION OF



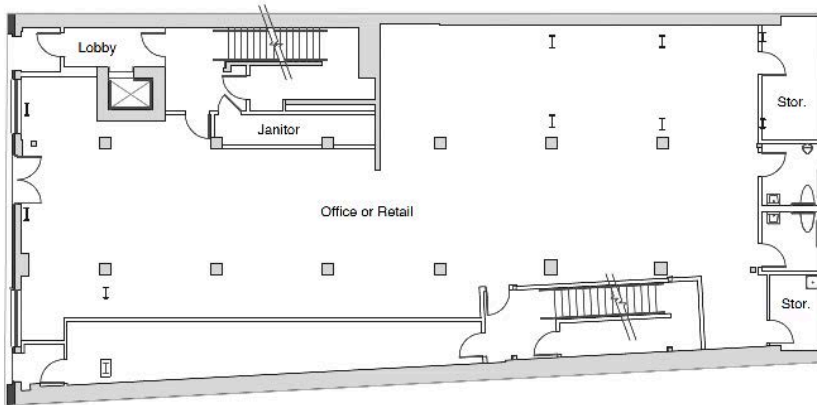
1508 17th Street, Santa Monica, CA | 310.899.2700

WWW.LEEWESTLA.COM | DRE 01222000

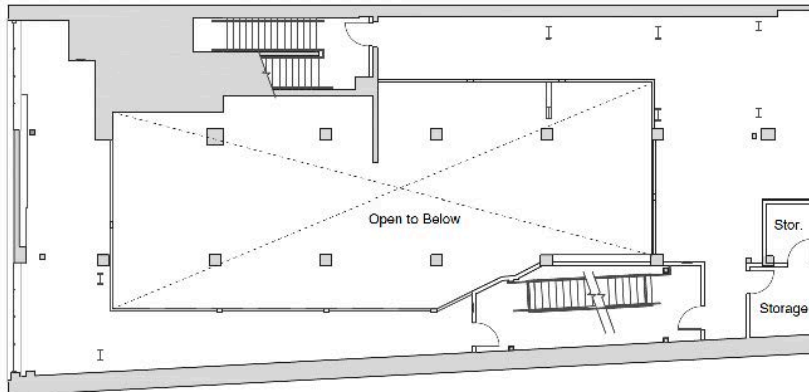
No warranty or representation is made to the accuracy of the foregoing information.
Terms of sale or lease are subject to change or withdrawal without notice.



Floor Plan: Office or Retail



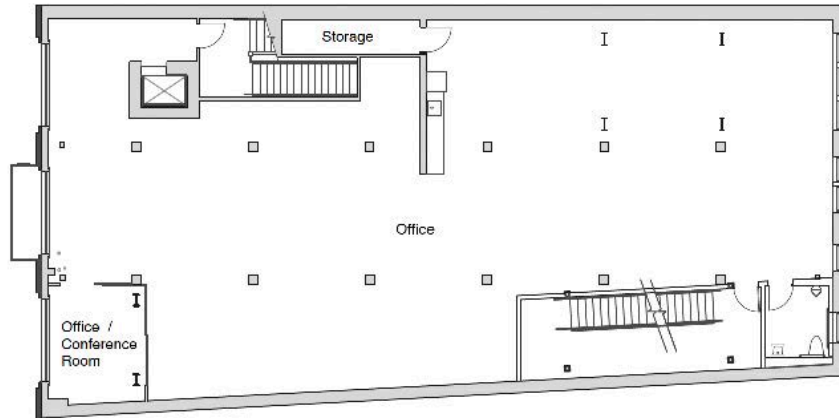
**1ST FLOOR -
3,799 SF**



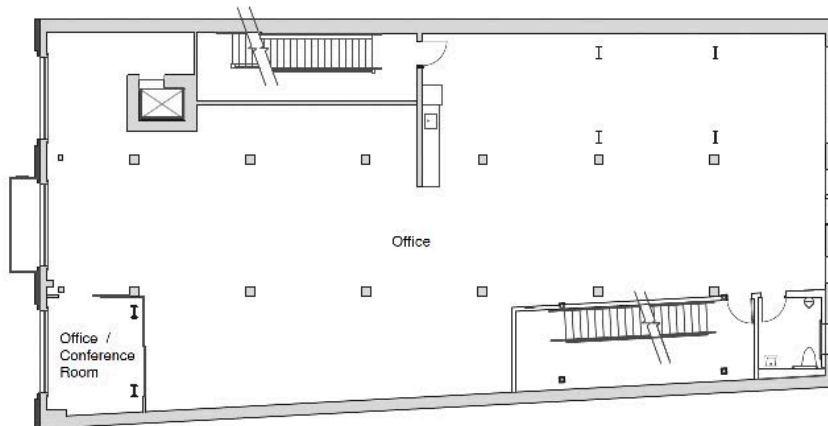
**MEZZANINE -
6,689 SF**



Floor Plan: Office or Retail



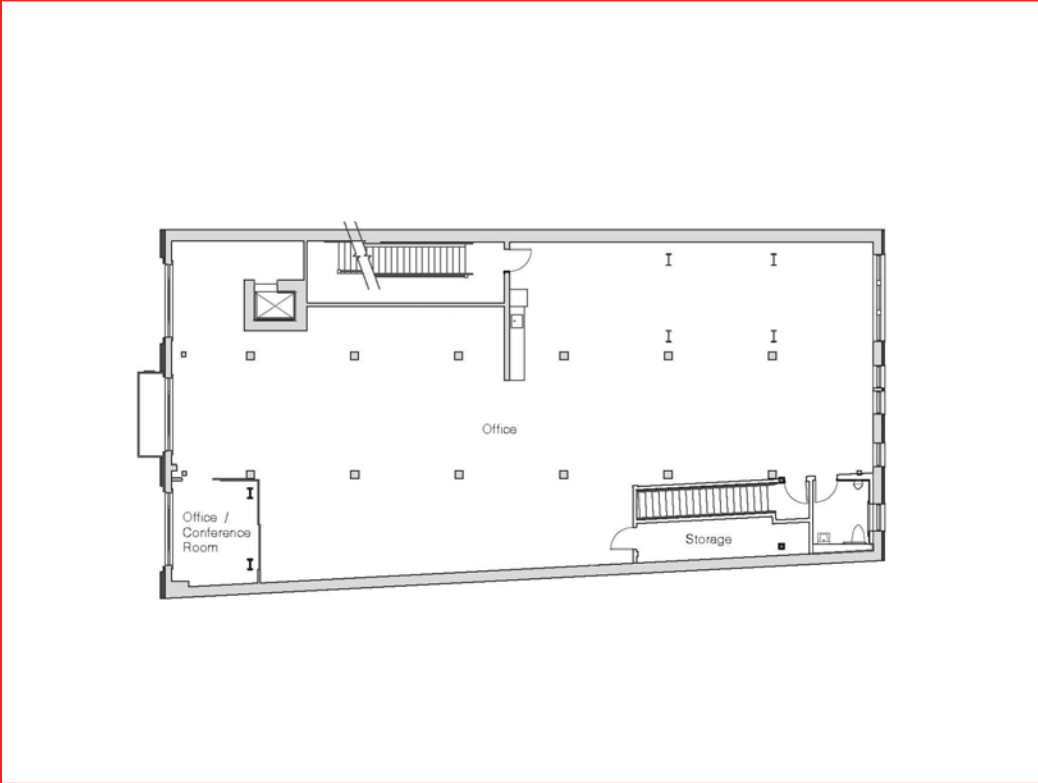
**2ND FLOOR -
4,931 SF**



**3RD FLOOR
4,907 SF**

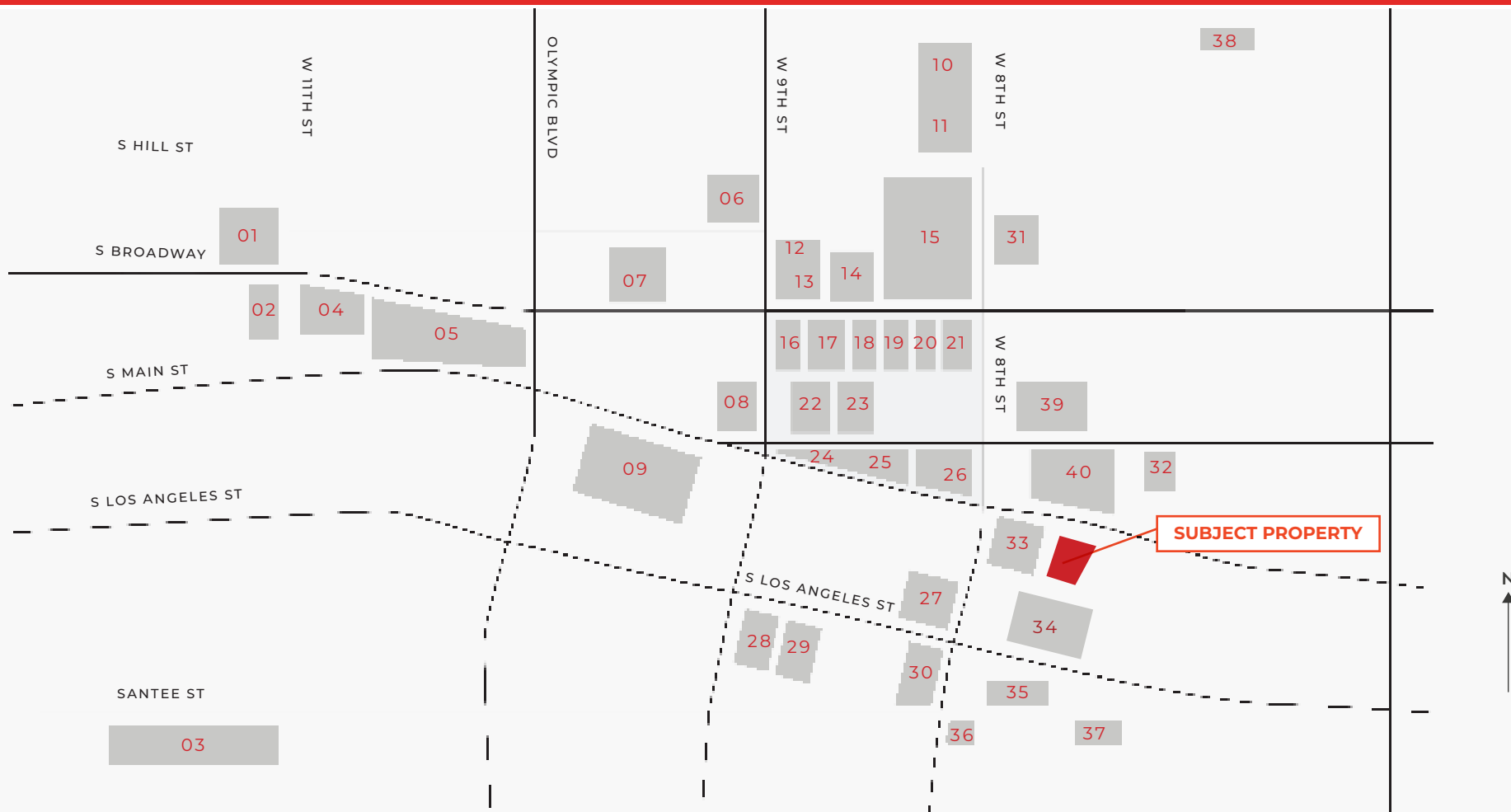


Floor Plan: Office or Retail



4TH FLOOR - 4,931 SF





OFFICES

- 01 William Randolph Hearst's original office
- 09 Calmart
- 15 Broadway Trade Center
- 34 Fabric

HOTELS

- 02 Proper Hotel
- 04 The Hoxton Hotel
- 07 Ace Hotel
- 10 Freehand Hotel

- 25 Tuck Hotel
- 36 Nomad Hotel

RESIDENTIAL

- 05 Broadway Palace Apartments
- 11 Eastern Columbia
- 28 Copper Design Space
- 35 Santee Village
- 39 The Grace
- 40 The Griffin

RETAIL

- 03 The Santee Alley
- 13 Acne Studios
- 14 Theory
- 16 A.P.C. & Aesop
- 17 A.L.C.
- 18 Gentle Monster
- 19 Urban Outfitters
- 20 Vans
- 21 Apple Tower Theater
- 22 Tanner Goods
- 29 Ron Tomson
- 31 COS
- 37 LA Flower Mart

F&B

- 06 Erewhon Market
- 08 Pattern Bar
- 11 Shake Shack & Sweetgreen
- 23 Verve Coffee
- 24 Preux & Proper
- 26 Terroni
- 27 Stumptown Coffee
- 30 Sonoratown
- 32 Little Damage
- 33 Wild Living Foods
- 36 No Ghost Bears

Keith Fielding

Principal
310.899.2719
kfielding@leewestla.com
AGT DRE 01729915

Tibor Lody

Principal
310.899.2720
tlody@leewestla.com
AGT DRE 01261129

Tommy Isola

Principal
310.899.2709
tisola@leewestla.com
AGT DRE 01974024

Serge Sarkissian

Vice President
310.899.2739
ssarkissian@leewestla.com
AGT DRE 01929449



Lee & Associates Los Angeles West, Inc.
1508 17th Street, Santa Monica, CA
310.899.2700 | www.leewestla.com | DRE 01222000

No warranty or representation is made to the accuracy of the foregoing information.