

LAND FOR SALE

SUWANNEE RIVER ±240 ACRES

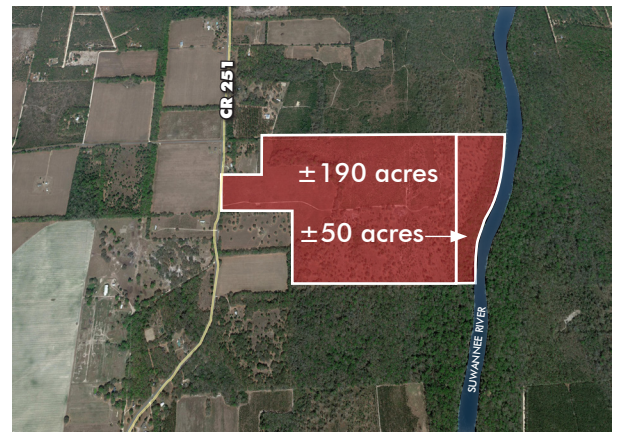
ASKING PRICE:
\$1,395,000

NW COUNTY RD 251, LAFAYETTE COUNTY, FL 32066



PROPERTY FEATURES

- + Very rare offering of large tract, highly desirable Suwannee River property, with +/- 2,900' of pristine, high bluff river frontage
- + Managed pine plantation and hardwoods throughout the property
- + Easy access with frontage on paved road - County Hwy 251, and with well-maintained interior dirt roads providing access throughout property
- + Great recreational, hunting and rural riverfront estate opportunity, with Ag-3 land use that allows some residential uses



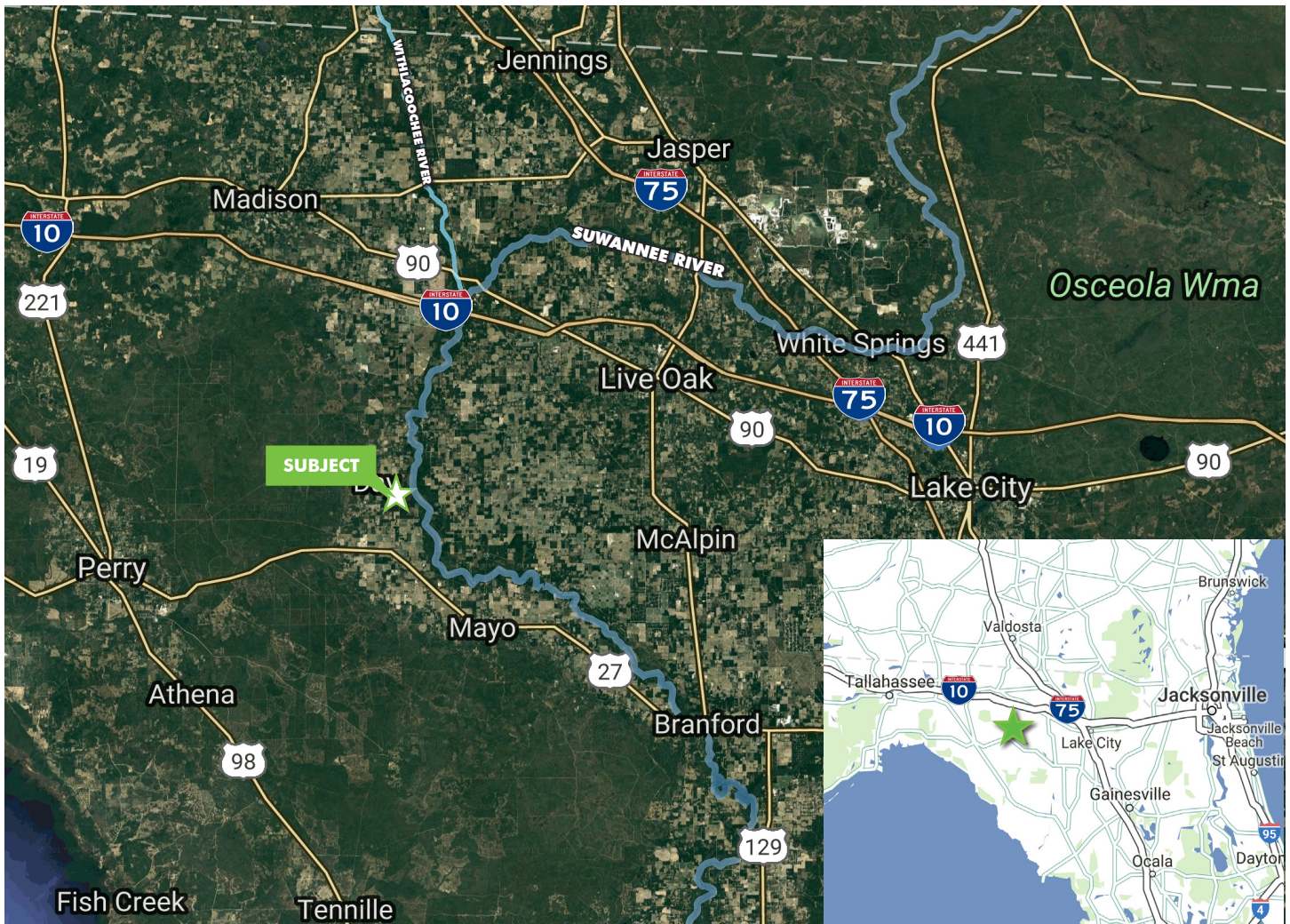
www.cbre.com/northwest-florida

CBRE

LAND FOR SALE

SUWANNEE RIVER ±240 ACRES

NW COUNTY RD 251
LAFAYETTE COUNTY, FL 32066



CONTACT US

TOM WATSON

Vice President
600 Grand Boulevard, Suite 207
Miramar Beach, FL 32550
+1 850 527 3524
thomas.watson@cbre.com

CBRE, Inc. | Licensed Real Estate Broker

© 2017 CBRE, Inc. The information contained in this document has been obtained from sources believed reliable. While CBRE, Inc. does not doubt its accuracy, CBRE, Inc. has not verified it and makes no guarantee, warranty or representation about it. It is your responsibility to independently confirm its accuracy and completeness. Any projections, opinions, assumptions or estimates used are for example only and do not represent the current or future performance of the property. The value of this transaction to you depends on tax and other factors which should be evaluated by your tax, financial and legal advisors. You and your advisors should conduct a careful, independent investigation of the property to determine to your satisfaction the suitability of the property for your needs.

Photos herein are the property of their respective owners and use of these images without the express written consent of the owner is prohibited. CBRE and the CBRE logo are service marks of CBRE, Inc. and/or its affiliated or related companies in the United States and other countries. All other marks displayed on this document are the property of their respective owners.

www.cbre.com/northwest-florida

CBRE