

FORMER 3,591 SF QSR WITH DRIVE-THRU AVAILABLE ON 2.52 ACRES

2695 GILCHRIST ROAD, AKRON, OHIO 44305

AUCTION: MARCH 2-4



[AUCTION EVENT LINK](#)

MARCUS & MILICHAP EXCLUSIVE CONTACTS

Philip Kates
Auction Advisor
305 206 1286
philip.kates@marcusmilichap.com

Adam Sklaver
Auction Advisor
301 706 4619
adam.sklaver@marcusmilichap.com

CBRE EXCLUSIVE CONTACTS

Kevin Moss
Senior Vice President
216 363 6453
kevin.moss@cbre.com

Connor Ambrose
Associate
216 535 4730
connor.ambrose@cbre.com

CBRE

THE OPPORTUNITY

- Absolute Auction - Starting Bid: \$1
- 3,591 SF QSR w/drive-thru available for lease or for sale
- The former restaurant sits on 2.52 AC parcel with over 434' of frontage along Gilchrist Rd
- Plenty of parking with over 36 spaces available
- Located right off I-76 (67k VPD) and less than a 10 minute from Downtown Akron
- Highway visible pylon signage available!
- Average household incomes of \$74,528 within a 3-mile radius
- Great industrial presence along Gilchrist Rd: 440k SF+ NAPA Auto Parts facility, 400k SF+ Rubbermaid facility, 875k SF+ Newell Brands facility



QUICK STATS - 3 MILE RADIUS



DAYTIME
POPULATION

56,971



2025
POPULATION

57,272



2025
HOUSEHOLDS

25,589



2025
POPULATION
25 & OVER

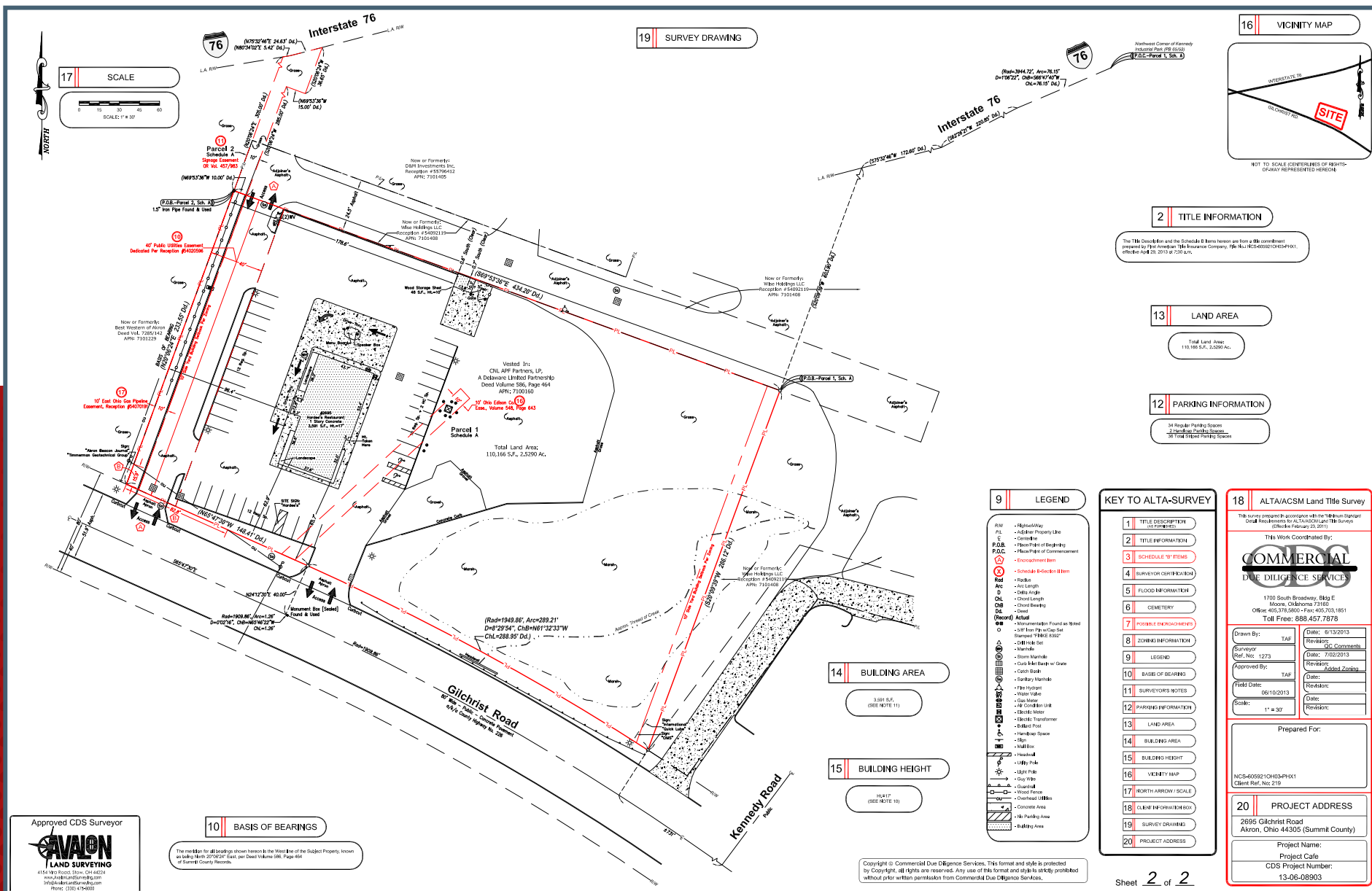
41,574



2025
AVG. HOUSEHOLD
INCOME

\$78,356

SURVEY



AERIAL



Newell Rubbermaid

Rubbermaid

HABEGGER
COMPLETE HVAC SOLUTIONS

NAPA

ALBRECHT
INCORPORATED

SAINT-GOBAIN

CBRE

amazon

TRIAD
TECHNOLOGIES

RUSH
TRUCK CENTERS

SITE

Royal Inn

Glehn Rd - 9029 VPD

DEMOGRAPHICS

	1 MILE	3 MILES	5 MILES
2025 Population - Current Year Estimate	7,698	57,272	138,839
2025 Daytime Population	6,155	56,971	161,121
2025 Households - Current Year Estimate	3,561	25,589	59,678
2025 Average Household Income	\$76,150	\$78,356	\$72,587
2030 Average Household Income Projection	\$85,995	\$88,644	\$81,686
2025 Median Household Income	\$63,576	\$62,910	\$56,716
2025 Per Capita Income	\$35,460	\$34,890	\$31,367
2025 Population 25 and Over	5,736	41,574	96,052

MARCUS & MILLICHAP EXCLUSIVE CONTACTS

Philip Kates

Auction Advisor

305 206 1286

philip.kates@marcusmilichap.com

Adam Sklaver

Auction Advisor

301 706 4619

adam.sklaver@marcusmilichap.com

CBRE EXCLUSIVE CONTACTS

Kevin Moss

Senior Vice President

216 363 6453

kevin.moss@cbre.com

Connor Ambrose

Associate

216 535 4730

connor.ambrose@cbre.com

© 2026 CBRE, Inc. All rights reserved. This information has been obtained from sources believed reliable, but has not been verified for accuracy or completeness. You should conduct a careful, independent investigation of the property and verify all information. Any reliance on this information is solely at your own risk. CBRE and the CBRE logo are service marks of CBRE, Inc. All other marks displayed on this document are the property of their respective owners, and the use of such logos does not imply any affiliation with or endorsement of CBRE. Photos herein are the property of their respective owners. Use of these images without the express written consent of the owner is prohibited. Licensed Real Estate Broker.

CBRE