

SPACES FOR LEASE

22200-22290 La Palma Ave, Yorba Linda, CA 92887



AVAILABILITY

- **Unit 22244** End-cap 2nd generation restaurant Space
+/- 2,689 sq.ft.
\$2.50/sq.ft.+ \$0.80/sq.ft. NNN
- Unit 22256:** +/- 461 sq.ft.
\$2.00/sq.ft. Gross

HIGHLIGHTS

- **Excellent Location:** Well-located in northeast part of Orange County, close to the 91 freeway
- **Ample parking**
- **Strong Retail Area:** Strong retail area with major national tenants nearby
- **Demographics:** 67,000+ residents, 25,500+ households with an average household income of \$148,000+ in Yorba Linda

Contact Information:

Ryan Oh
(213) 804-7548
roh@cbcwilshire.com
BRE 01082638

JW Baelly
(818) 321-6373
jw@cbcwilshire.com
BRE 01865026

Alice Oh
(213) 952-6069
aoh@cbcwilshire.com
BRE 02129043

Coldwell Banker Commercial
Wilshire Properties
3731 Wilshire Blvd Ste 820,
Los Angeles, California 90010
T. 213.637.1112 F. 213.637.1113
BRE 01936489

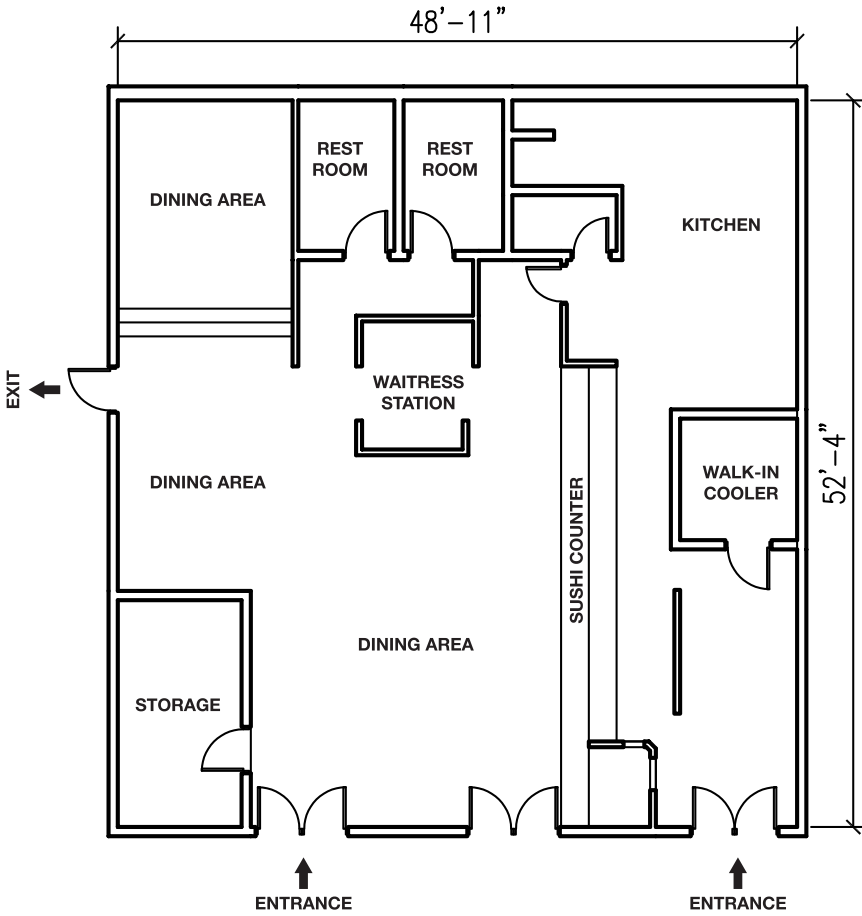
Coldwell Banker Commercial Wilshire Properties have obtained the information in this brochure from sources that they believe to be reliable. However, they have not verified its accuracy and make no guarantee, warranty or representation about it. It is submitted subject to the possibility of errors, omissions, change of price, rental or other conditions, prior sale, lease or financing, or withdrawal without notice. Coldwell Banker Commercial Wilshire Properties has included projections, opinions, assumptions or estimates for example only, and they may not represent current or future performance of the property. You and your tax and legal advisors should conduct your own investigation of the property and transaction.



SPACES FOR LEASE

22200-22290 La Palma Ave, Yorba Linda, CA 92887

UNIT #22244



All measurements are approximate and are for guidance only.



Coldwell Banker Commercial Wilshire Properties have obtained the information in this brochure from sources that they believe to be reliable. However, they have not verified its accuracy and make no guarantee, warranty or representation about it. It is submitted subject to the possibility of errors, omissions, change of price, rental or other conditions, prior sale, lease or financing, or withdrawal without notice. Coldwell Banker Commercial Wilshire Properties has included projections, opinions, assumptions or estimates for example only, and they may not represent current or future performance of the property. You and your tax and legal advisors should conduct your own investigation of the property and transaction.



WILSHIRE PROPERTIES

SPACES FOR LEASE

22200-22290 La Palma Ave, Yorba Linda, CA 92887



Neighboring Tenants:



and many more.

Coldwell Banker Commercial Wilshire Properties have obtained the information in this brochure from sources that they believe to be reliable. However, they have not verified its accuracy and make no guarantee, warranty or representation about it. It is submitted subject to the possibility of errors, omissions, change of price, rental or other conditions, prior sale, lease or financing, or withdrawal without notice. Coldwell Banker Commercial Wilshire Properties has included projections, opinions, assumptions or estimates for example only, and they may not represent current or future performance of the property. You and your tax and legal advisors should conduct your own investigation of the property and transaction.



WILSHIRE PROPERTIES