

AVAILABLE FOR LEASE

2427 167th Street
Hammond, IN 46323



PROPERTY DESCRIPTION

Two industrial bays (each bay is 21' x 54') are available for lease within a 9,280 SF masonry-constructed building, featuring 16' ceiling heights, two 14' grade-level doors, and 3-phase/480v power. The bays share a restroom and offer parking for approximately twelve trucks, making them well-suited for contractors, service providers, and light industrial users. The property also includes three large above-ground storage tanks totaling 40,000 cubic feet, providing additional on-site storage capacity.

TOTAL SIZE	2,768 SF
LEASE PRICE	\$4,650/ month (full service)
LOT SIZE	1.42 AC
DRIVE-IN DOORS	Two (14')
ZONING	Industrial 1
BUILT IN	1955
TRUCK PARKING	12 Trucks
OFFICE	500 SF
ELECTRICITY	3 Phase - 480 V

FOR MORE INFORMATION

Lori Tubbs (312) 446-7059 lori@loritubbs.com

 **RI TUBBS**

REAL ESTATE & DEVELOPMENT CONSULTING

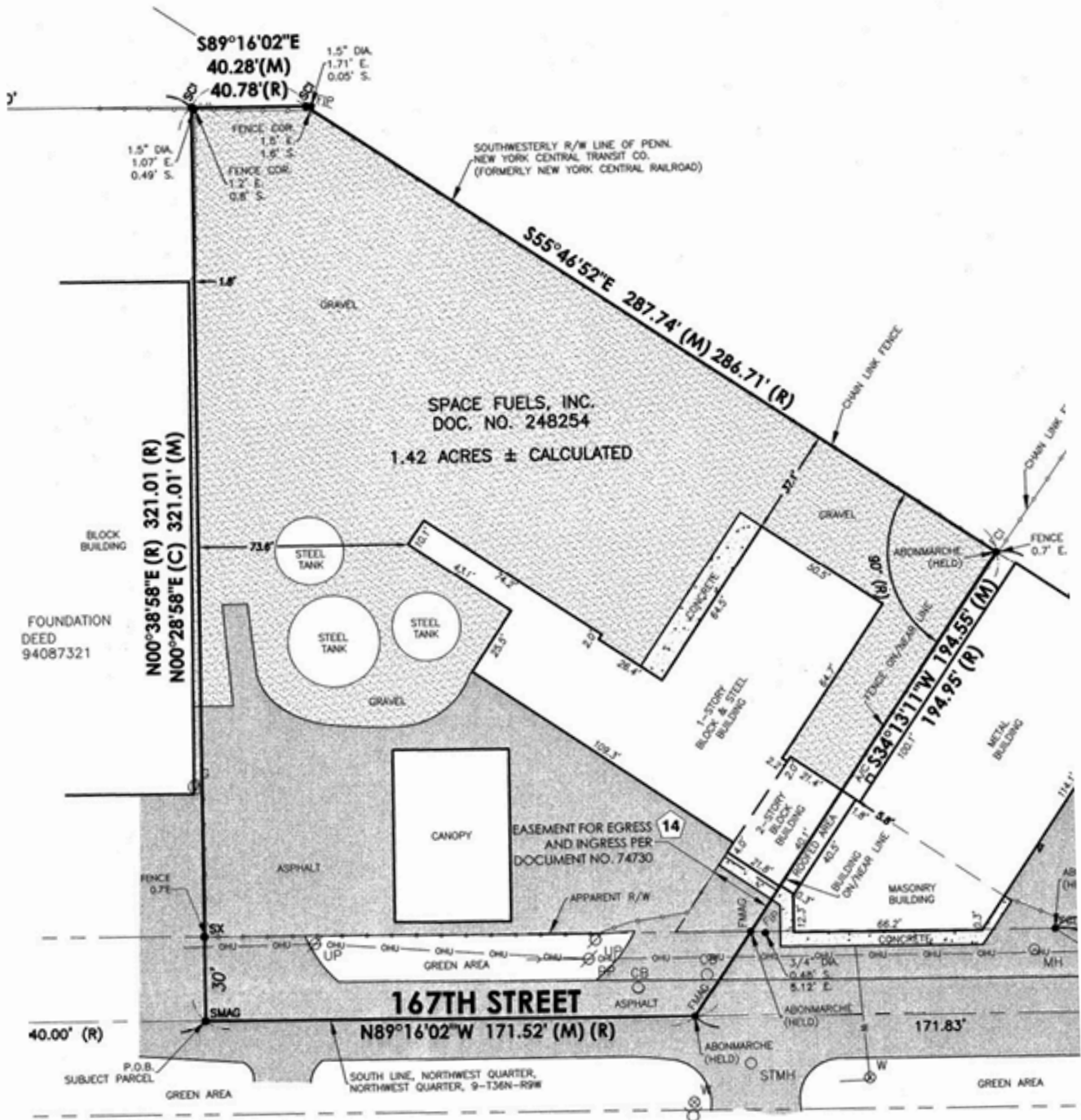
AVAILABLE FOR LEASE

2427 167th Street

Hammond, IN 46323

LORI TUBBS
REAL ESTATE & DEVELOPMENT CONSULTING

SURVEY



FOR MORE INFORMATION

Lori Tubbs

(312) 446-7059

lori@loritubbs.com

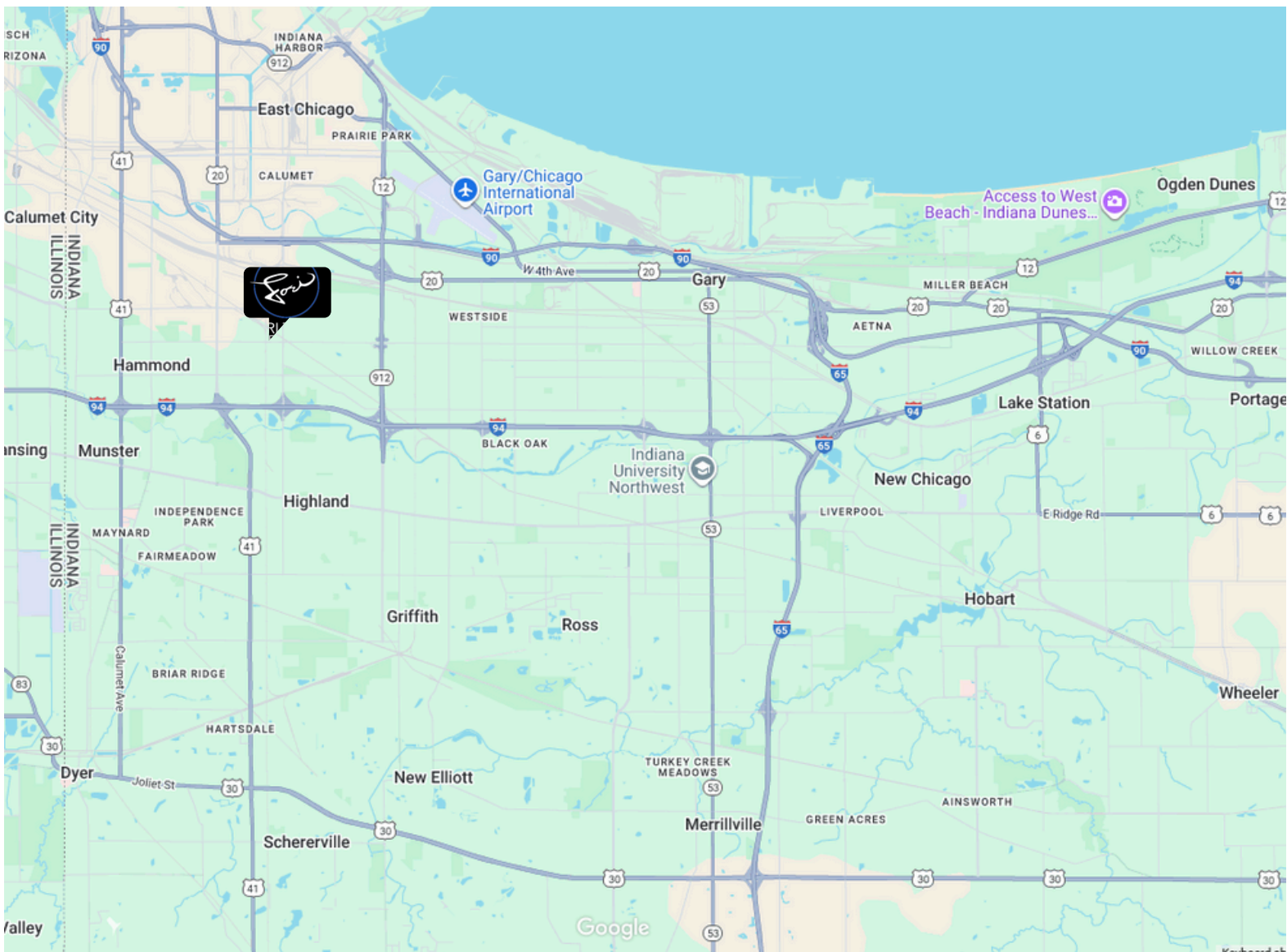
AVAILABLE FOR LEASE

2427 167th Street

Hammond, IN 46323

LORI TUBBS
REAL ESTATE & DEVELOPMENT CONSULTING

MAP



FOR MORE INFORMATION
Lori Tubbs (312) 446-7059 lori@loritubbs.com