

FOR SALE
1.6 ± ACRES - COMMERCIAL
2988 HOWLAND BLVD. DELTONA, FL 32725



Deltona is the largest city in Volusia County. It's located approximately half way between Orlando and Daytona Beach. This property brings a unique opportunity and excellent value. Fast growing population and employment area.

- Next to Halifax Health and Halifax Crossings Medical Village
- Located few miles from I-4 on Howland Blvd
- Across the street from The Center At Deltona and Fire Station
- Excellent visibility and easily accessible roads with high volume and signalized intersection
- Howland Blvd: 31,500+ AADT

PROPERTY HIGHLIGHTS

SIZE:

1.6 ± Acres (69,696 SqFt)

ZONING:

C-2 General Commercial

ADDRESS:

2988 Howland Blvd.
Deltona, FL 32725

COUNTY:

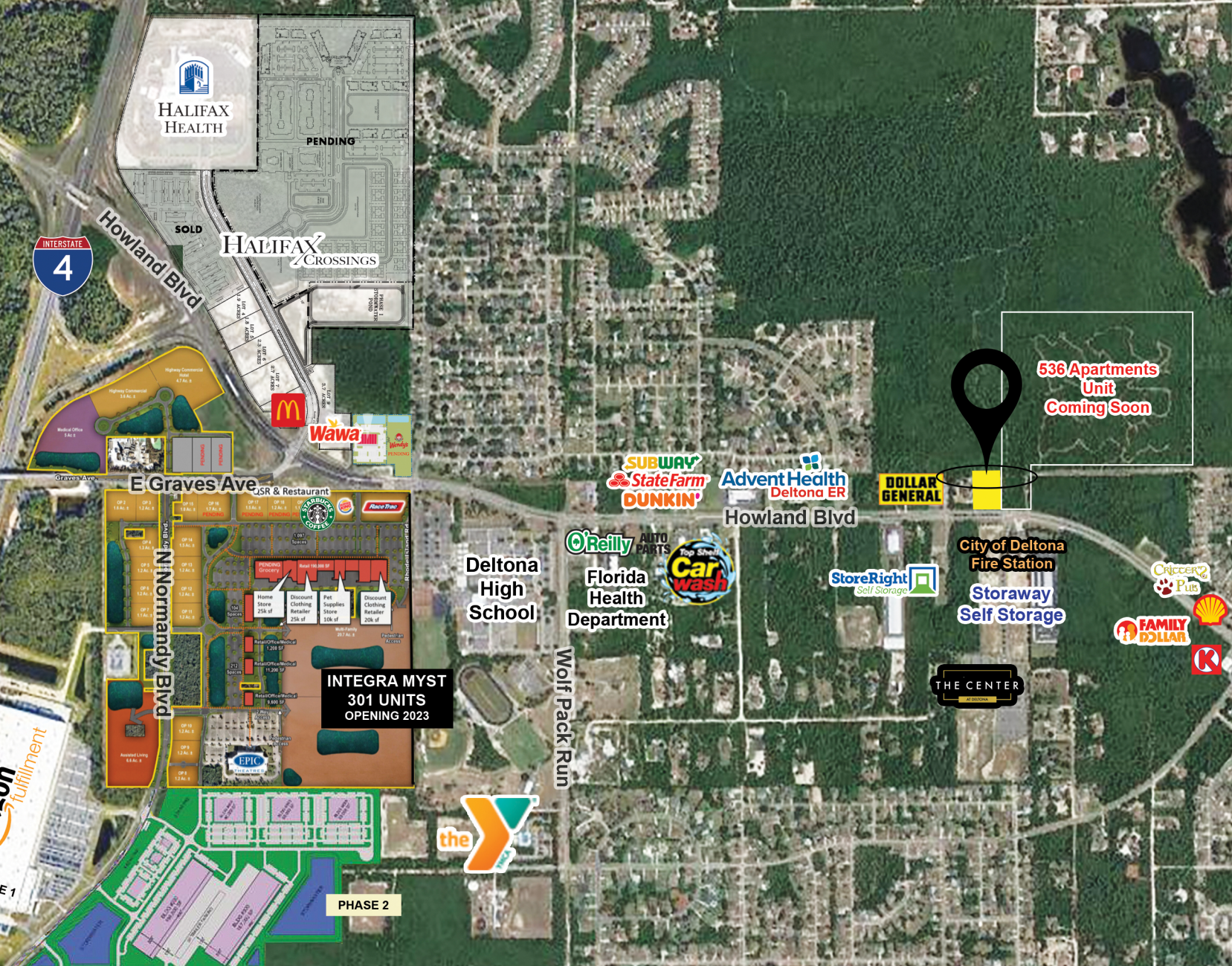
Volusia County

PRICE:

\$1,200,000

PHOTOS





BOBBY LUTHRA

Licensed Real Estate Associate

407-468-0099

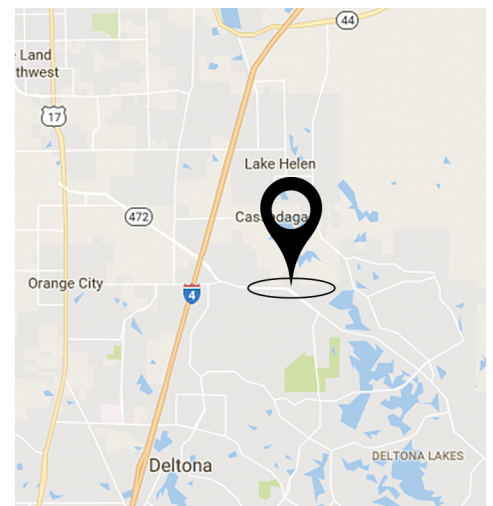
bobluthra@pibland.com

OFFICE LOCATION:

27 N Summerlin Ave
Orlando, FL 32801

CONTACT US:

Phone: 407-649-9888
Fax: 407-649-7222



This document has been prepared by Property Investment Brokers for advertising and general information only. No warranty or representation, express or implied, is made as to the accuracy of the information contained herein, and same is submitted subject to errors, omissions, change of price, rental or other conditions, withdrawal without notice, and to any special listing conditions imposed by our principals.

