

47151 CARTIER COURT  
WIXOM, MICHIGAN

INDUSTRIAL FOR LEASE  
42,504 Square Feet Available



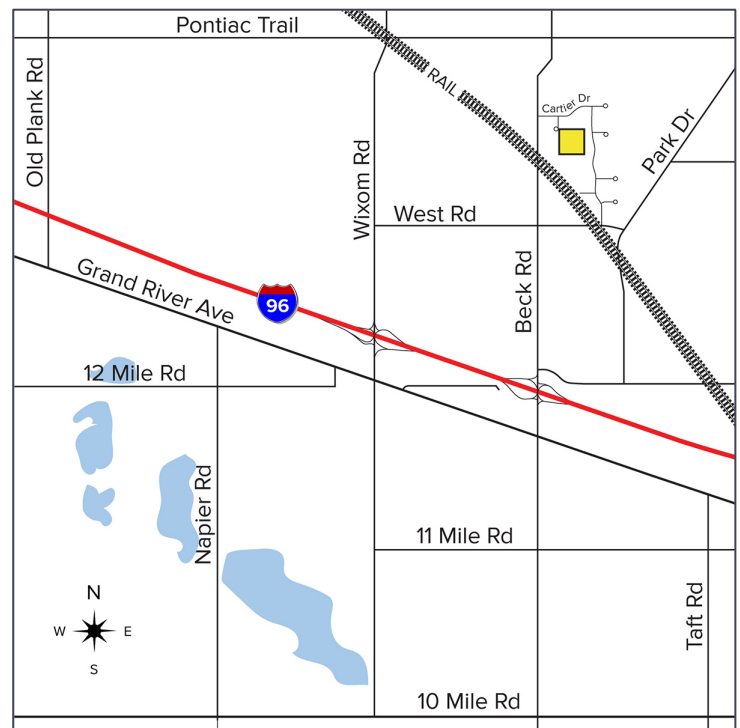
**SIGNATURE  
ASSOCIATES**  
KNOW SIGNATURE | KNOW RESULTS

## BECK NORTH CORPORATE PARK



### PROPERTY FEATURES

- 5,000 – 17,000 square feet available
- 22' clear height
- (3) 12'x14', 14'x14' grade level doors
- (1) truckwell with leveler
- 480 volt power
- Extremely well-maintained building
- Easy access to I-96 Freeway
- Short term lease available
- Lease Rate: \$12.00/sq. ft. Gross
- Sale Possible – Contact Broker



For more information, please contact:

**JIM MONTGOMERY**  
(248) 359 0614  
jmontgomery@signatureassociates.com

**CHRISTOPHER D'ANGELO**  
(248) 948 0109  
cdangelo@signatureassociates.com

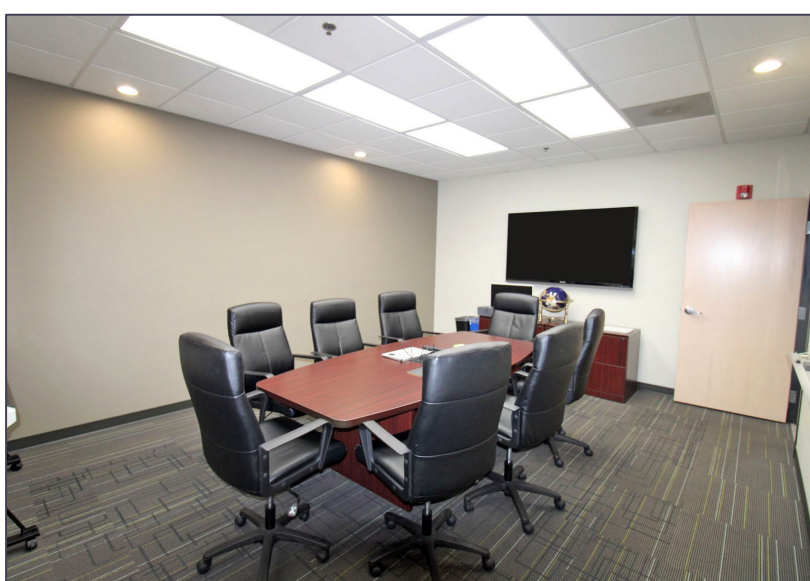
**SIGNATURE ASSOCIATES**  
One Towne Square, Suite 1200  
Southfield, MI 48076  
www.signatureassociates.com



# 47151 Cartier Court – Wixom, Michigan

## Industrial For Lease

42,504  
Square Feet  
AVAILABLE



For more information, please contact:

**JIM MONTGOMERY**

(248) 359 0614

[jmontgomery@signatureassociates.com](mailto:jmontgomery@signatureassociates.com)

**CHRISTOPHER D'ANGELO**

(248) 948 0109

[cdangelo@signatureassociates.com](mailto:cdangelo@signatureassociates.com)

**SIGNATURE ASSOCIATES**

One Towne Square, Suite 1200

Southfield, MI 48076

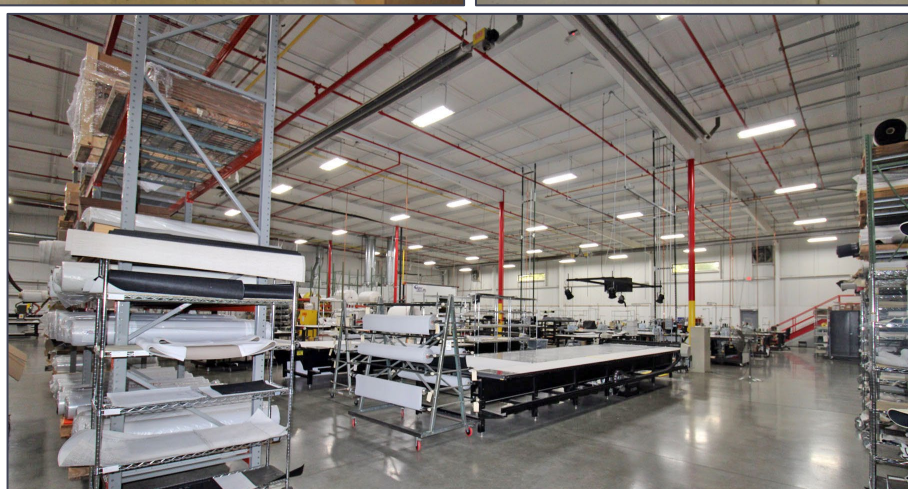
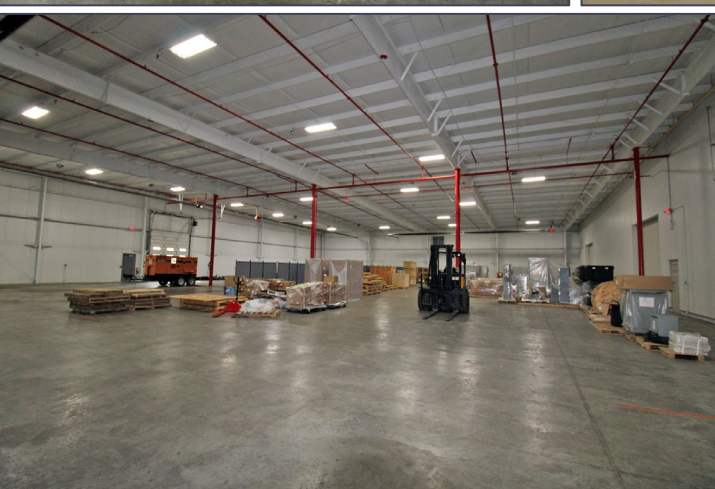
[www.signatureassociates.com](http://www.signatureassociates.com)



# 47151 Cartier Court – Wixom, Michigan

## Industrial For Lease

42,504  
Square Feet  
AVAILABLE



For more information, please contact:

**JIM MONTGOMERY**

(248) 359 0614

[jmontgomery@signatureassociates.com](mailto:jmontgomery@signatureassociates.com)

**CHRISTOPHER D'ANGELO**

(248) 948 0109

[cdangelo@signatureassociates.com](mailto:cdangelo@signatureassociates.com)

**SIGNATURE ASSOCIATES**

One Towne Square, Suite 1200

Southfield, MI 48076

[www.signatureassociates.com](http://www.signatureassociates.com)

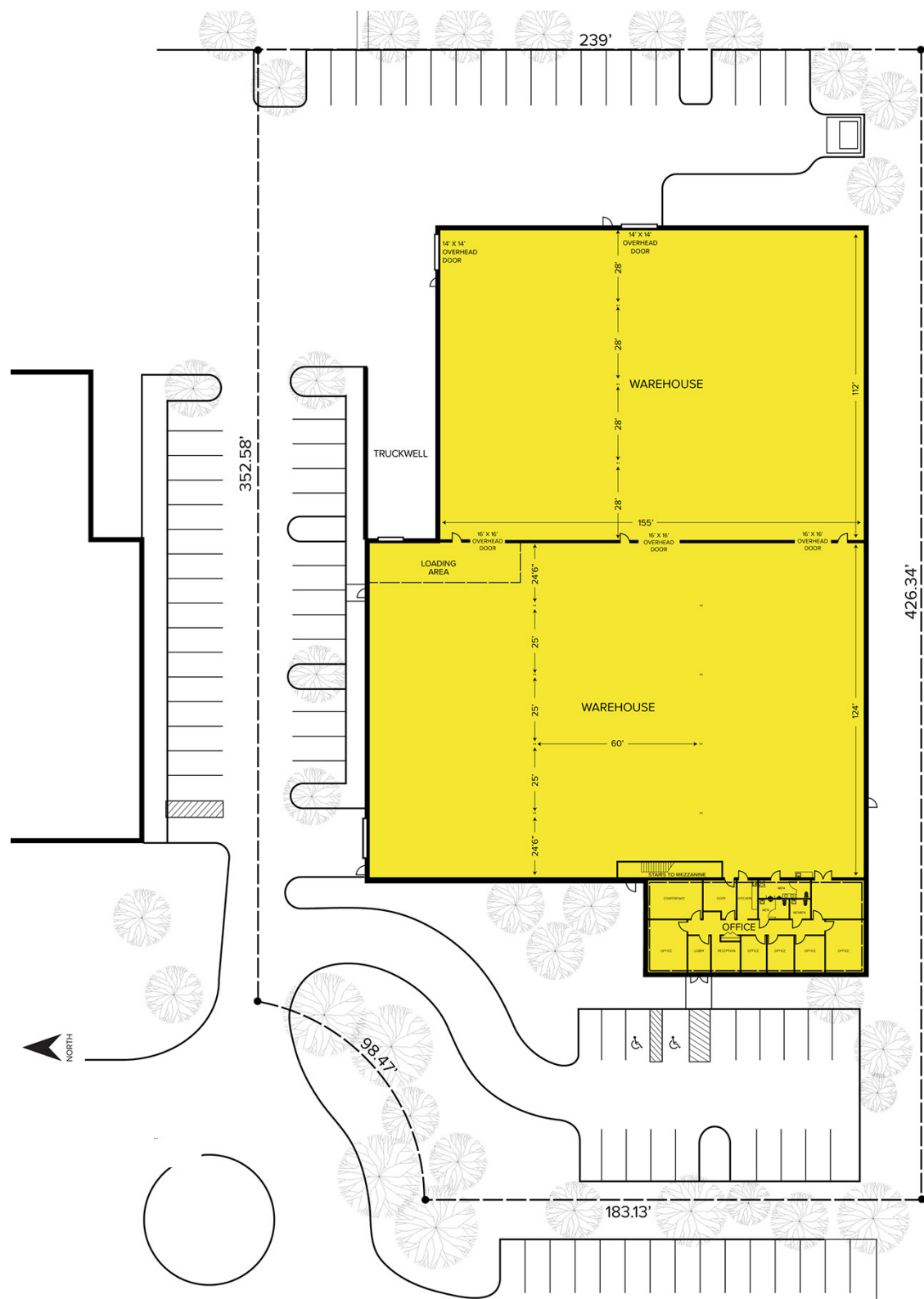
Information is subject to verification and no liability for errors or omissions is assumed. Price is subject to change and listing withdrawal.



47151 Cartier Court – Wixom, Michigan  
Industrial For Lease

42,504  
Square Feet  
AVAILABLE

Site Plan



For more information, please contact:

**JIM MONTGOMERY**  
(248) 359 0614  
jmontgomery@signatureassociates.com

**CHRISTOPHER D'ANGELO**  
(248) 948 0109  
cdangelo@signatureassociates.com

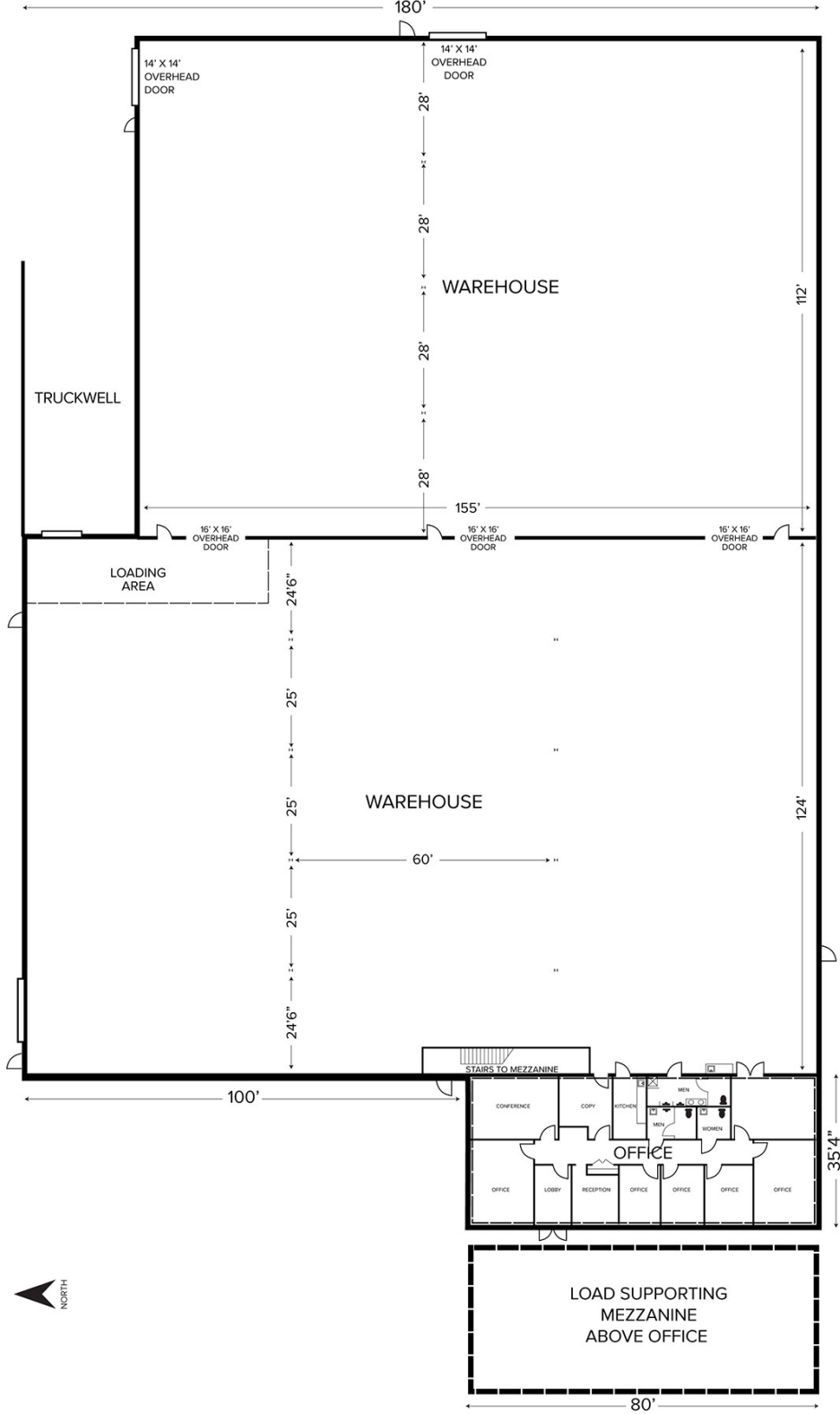
**SIGNATURE ASSOCIATES**  
One Towne Square, Suite 1200  
Southfield, MI 48076  
www.signatureassociates.com

Information is subject to verification and no liability for errors or omissions is assumed. Price is subject to change and listing withdrawal.

47151 Cartier Court – Wixom, Michigan  
Industrial For Lease

42,504  
Square Feet  
AVAILABLE

Floor Plan



For more information, please contact:

**JIM MONTGOMERY**  
(248) 359 0614  
jmontgomery@signatureassociates.com

**CHRISTOPHER D'ANGELO**  
(248) 948 0109  
cdangelo@signatureassociates.com

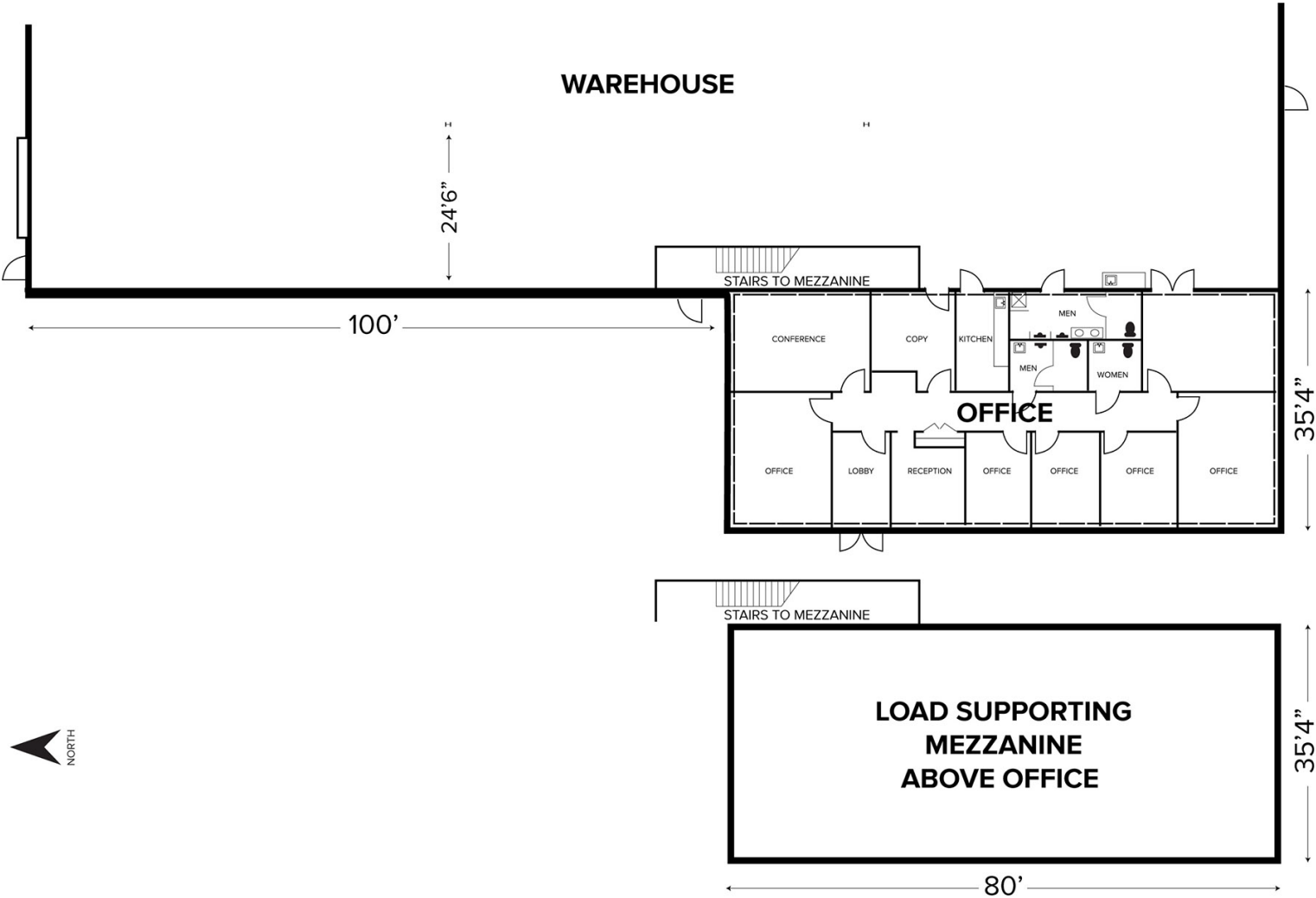
**SIGNATURE ASSOCIATES**  
One Towne Square, Suite 1200  
Southfield, MI 48076  
www.signatureassociates.com

Information is subject to verification and no liability for errors or omissions is assumed. Price is subject to change and listing withdrawal.

47151 Cartier Court – Wixom, Michigan  
Industrial For Lease

42,504  
Square Feet  
AVAILABLE

Floor Plan – Office Area



For more information, please contact:

**JIM MONTGOMERY**  
(248) 359 0614  
jmontgomery@signatureassociates.com

**CHRISTOPHER D'ANGELO**  
(248) 948 0109  
cdangelo@signatureassociates.com

**SIGNATURE ASSOCIATES**  
One Towne Square, Suite 1200  
Southfield, MI 48076  
www.signatureassociates.com

Information is subject to verification and no liability for errors or omissions is assumed. Price is subject to change and listing withdrawal.

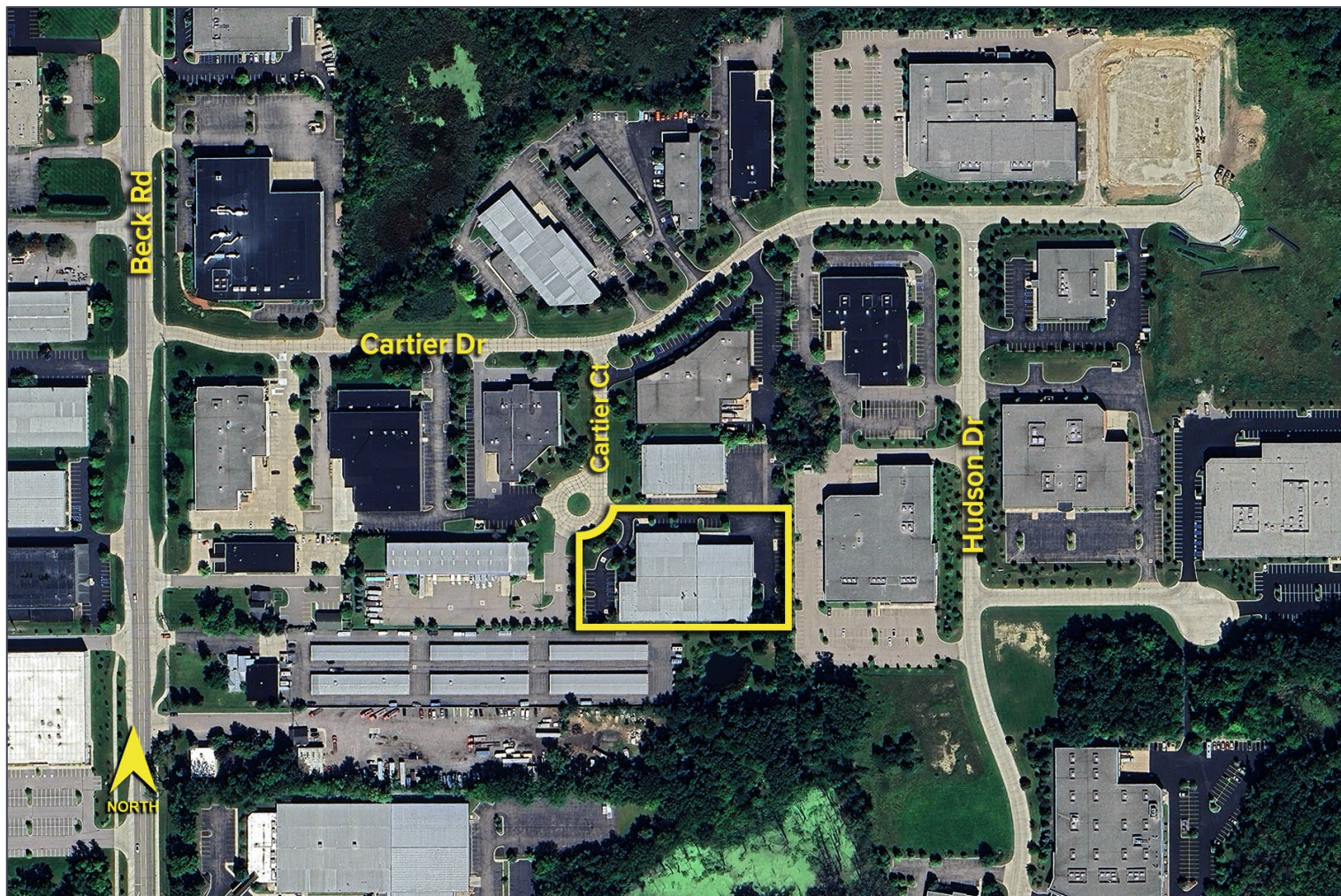


# 47151 Cartier Court – Wixom, Michigan

## Industrial For Lease

42,504  
Square Feet  
AVAILABLE

Aerial



For more information, please contact:

**JIM MONTGOMERY**

(248) 359 0614

[jmontgomery@signatureassociates.com](mailto:jmontgomery@signatureassociates.com)

**CHRISTOPHER D'ANGELO**

(248) 948 0109

[cdangelo@signatureassociates.com](mailto:cdangelo@signatureassociates.com)

**SIGNATURE ASSOCIATES**

One Towne Square, Suite 1200

Southfield, MI 48076

[www.signatureassociates.com](http://www.signatureassociates.com)

Information is subject to verification and no liability for errors or omissions is assumed. Price is subject to change and listing withdrawal.