



R&D Plug and Play Sublease 15,839 SF

46610 Landing Parkway, Fremont, CA



- Located in prestigious Bayside Technology Park
- Next door to Club Sport and hotel services
- Great Access to I-880
- Extensive glassline
- Flexible renovated office/lab/warehouse space
- LED lighting
- Parking 4/1,000
- Lunch room
- Server room
- ±83 tons HVAC
- Heavy power
- 15'-18' ft clear height
- Grade level loading
- Call to tour

Gabe D. Regalado

Director

t 408-455-4913

gabe.regalado@nmrk.com

CA RE Lic. #02008286

Mike Lee

Associate

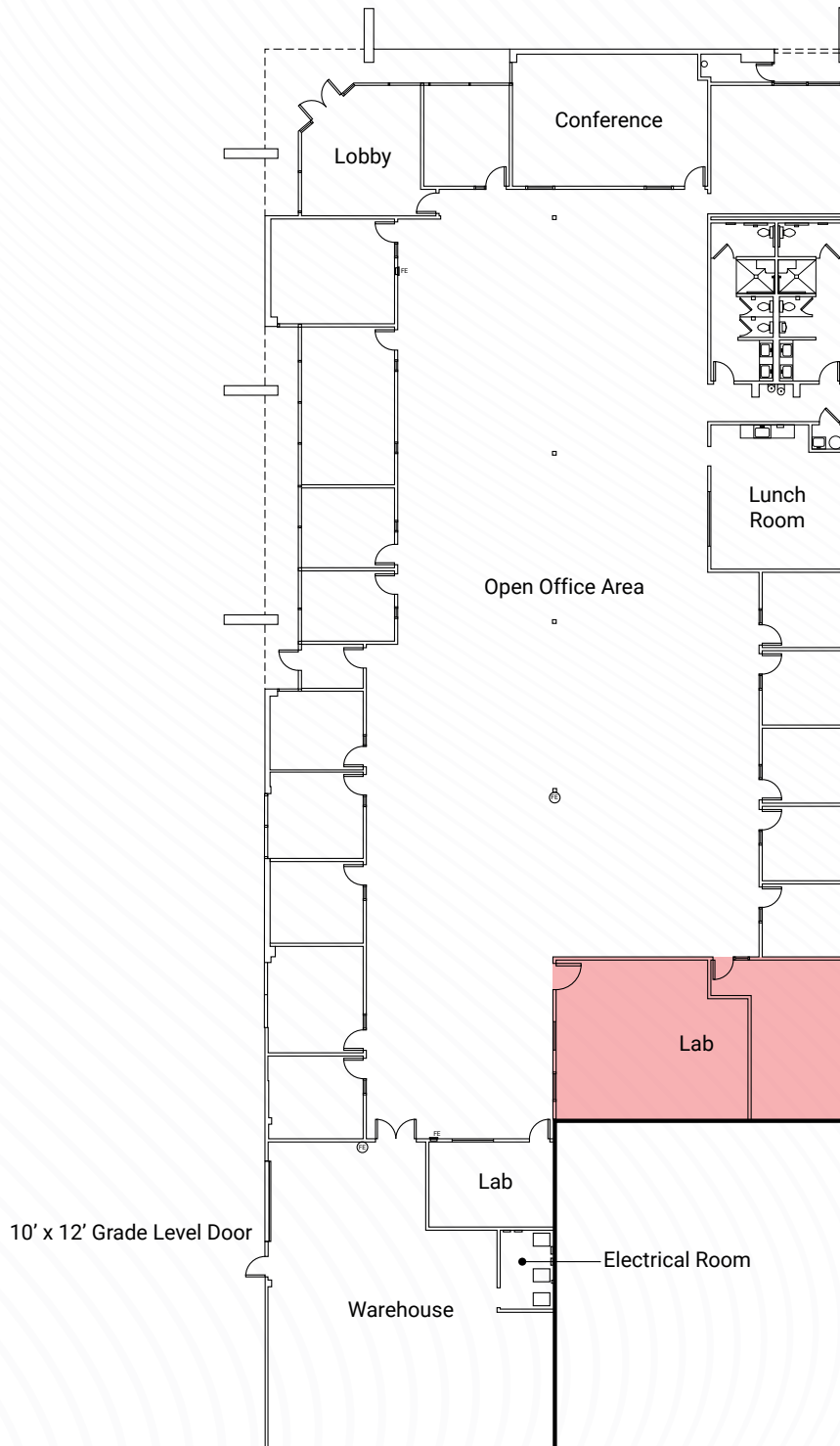
t 408 655 0478

mike.lee@colliers.com

CA RE Lic. #02209581

NEWMARK

FLOOR PLAN



AMENITIES MAP



**46610 Landing Pkwy
Fremont, CA**

Pacific Commons Shopping Center

| | | |
|--|--|--|
| | | |
| | | |
| | | |
| | | |
| | | |
| | | |
| | | |
| | | |

| | | |
|--|--|--|
| | | |
|--|--|--|

| | | | |
|--|--|--|--|
| | | | |
| | | | |
| | | | |
| | | | |

TENANT MAP



Gabe D. Regalado
 Director
 t 408-455-4913
 gabe.regalado@nmrk.com
 CA RE Lic. #02008286

Mike Lee
 Associate
 t 408 655 0478
 mike.lee@colliers.com
 CA RE Lic. #02209581