

1,100 Square Feet | 7 Minutes from Downtown Dallas | 1641 S Fitzhugh Ave, Dallas, Texas 75223

CREATIVES ONLY.



ALT+CO
ALTSCHULER AND COMPANY

OLIVER DAY
972.983.9323
od@altschulercompany.com

VINCENT NOTZON
210.749.1644
vn@altschulercompany.com

BUILDING OVERVIEW

Available:

1,100 SF

Parking:

Ample Surface + Street Parking

Furniture:

Available

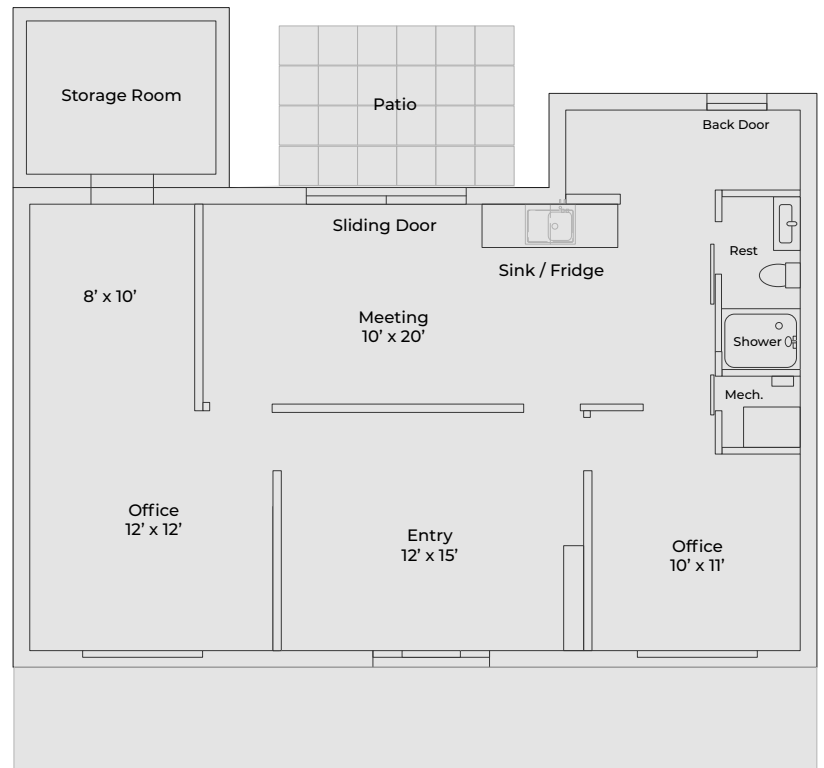
Floor Plan:

4 Offices / Rooms

Kitchenette

Restroom with Shower

Back Patio



LOCATION IS KEY



**JUST A SHORT
DRIVE FROM THE
MOST POPULAR
AREAS IN DALLAS.**

4 min from Deep Ellum

8 min from Lakewood

8 min from Lower Greenville

7 min from Downtown

10 min from Uptown