

# 1524 I-35 Office Building

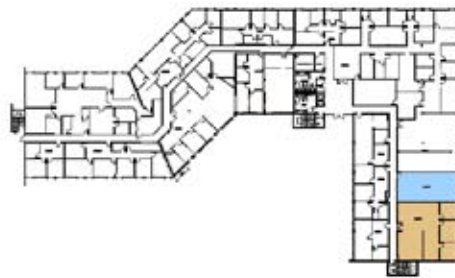
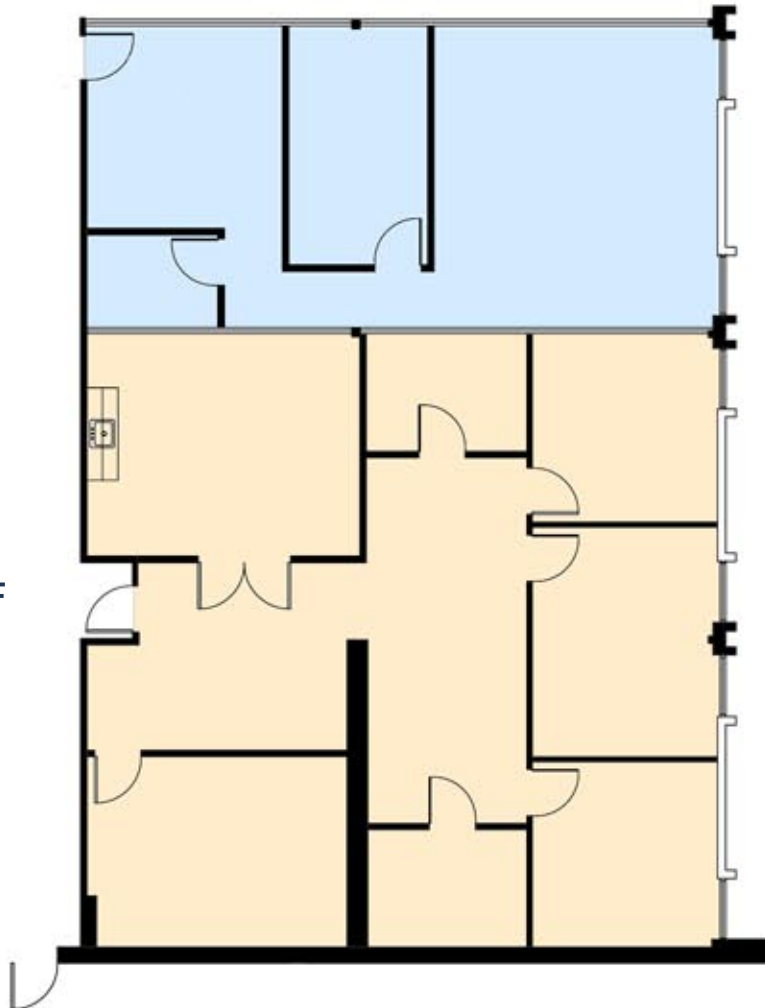
## AVAILABLE SPACE

2ND FLOOR

SUITE 233/235 ±2,930 RSF

SUITE 233  
±986 RSF

SUITE 235  
±1,944 RSF



Dan Lewis  
David Alsmeyer

dlewis@tigusa.com  
dalsmeyer@tigusa.com

512.732.0400

901 S. MoPac Expressway, Suite IV-285 | Austin, TX 78746 | [www.tigusa.com](http://www.tigusa.com)