

FOR SALE OR LEASE

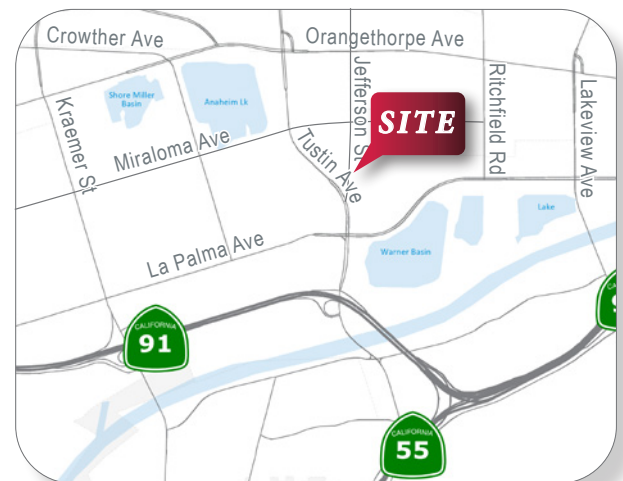
1230 N. Jefferson St., Ste. H | Anaheim | CA

±3,408 Sq Ft
Industrial Unit



FEATURES:

- ±3,408 SF Industrial Unit
- ±1,900 SF of Office Space
- 2 Automatic Ground Level Loading Doors
- 16' Warehouse Clearance
- Low and Reliable Anaheim Power Electrical Rates
- Immediate Access to Costa Mesa (55), Riverside (91) and Orange (57) Freeways
- Highly Desirable North Orange County location with ideal proximity to infrastructure, ports, airports and a strong labor pool



For Additional Information
Please Contact Exclusive Agents:



FRANK MEJIA
714.404.1113
fmejia@lee-associates.com
DRE #00561065

PATRICK DELANEY
714.564.7127
pdelaney@lee-associates.com
DRE #00962861

Lee & Associates Commercial Real Estate Services, Inc.—Orange
1004 W. Taft Avenue, Suite 150 | Orange, CA 92865 | O:714.647.9100
F: 714.543.5285 | DRE# 01011260 | www.leeorange.com

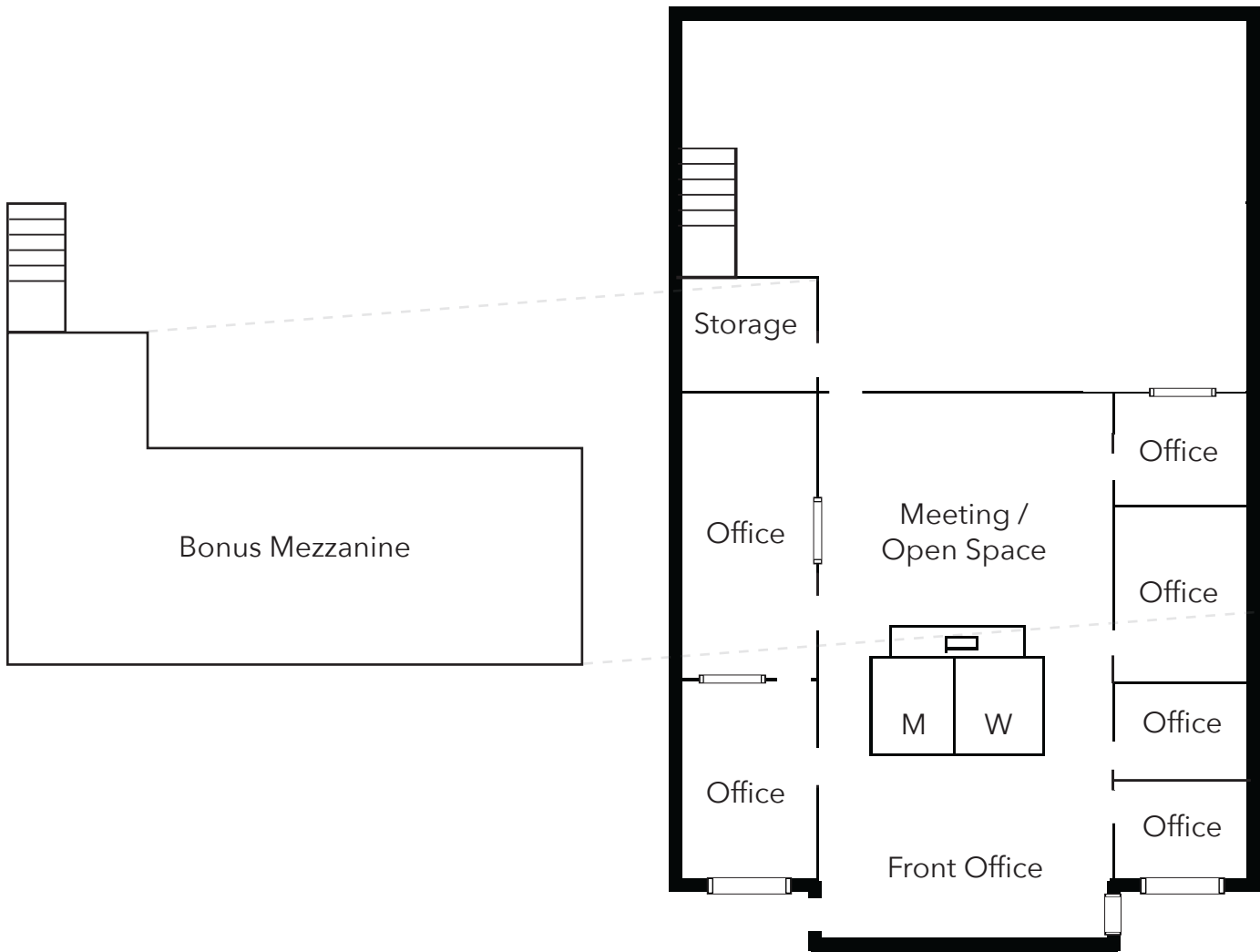
©Lee & Associates® All information contained herein has been provided by Seller/Lessor and/or third parties, but has not been independently verified by Lee & Associates or its agent(s). Buyer/Lessee and interested parties should independently verify all information communicated by these sources.

FOR SALE OR LEASE

1230 N. Jefferson St., Ste. H | Anaheim | CA

±3,408 Sq Ft
Industrial Unit

FLOOR PLAN:



drawing not to scale

For Additional Information
Please Contact Exclusive Agents:



FRANK MEJIA

714.404.1113

fmejia@lee-associates.com

DRE #00561065

PATRICK DELANEY

714.564.7127

pdelaney@lee-associates.com

DRE #00962861

Lee & Associates Commercial Real Estate Services, Inc.—Orange
1004 W. Taft Avenue, Suite 150 | Orange, CA 92865 | O:714.647.9100
F: 714.543.5285 | DRE# 01011260 | www.leeorange.com

©Lee & Associates® All information contained herein has been provided by Seller/Lessor and/or third parties, but has not been independently verified by Lee & Associates or its agent(s). Buyer/Lessee and interested parties should independently verify all information communicated by these sources.