

11190 SW Tonquin Pl
SHERWOOD, OR 97140

Tonquin Loop

Tonquin Loop

SW Willis Rd

SW Tonquin Rd

Basalt Creek Pkwy



Clayton Madey
503.972.7277
clayton@macadamforbes.com
Licensed in OR

2 Centerpointe Drive, Suite 500 | Lake Oswego, OR 97035 | WWW.MACADAMFORBES.COM | 503.227.2500

All of the information contained herein was obtained either from the owner or other parties we consider reliable. We have no reason to doubt its accuracy, however we do not guarantee it.

FOR SALE



FOR SALE

11190 SW Tonquin Pl, Sherwood, OR 97140

PROPERTY DESCRIPTION

Industrial land within Tualatin's urban growth boundary is available for sale. The property is currently zoned FD-20 in Washington County, which permits a wide array of uses, including contractor establishments. Approval for a contractor's establishment has already been granted, saving a buyer the time, cost, and uncertainty of achieving county approval for a contractor's use.

The property is located within Tualatin's comprehensive plan as "BCE (Basalt Creek Employment)," an industrial zone within Tualatin. Upon annexation into Tualatin, the property will be zoned BCE and eligible for industrial development.

The property features a beautiful home, two shops, and flat land. The site affords a wide array of options for short term use, plus long-term value based on the zoning, location, and inclusion in the UGB.

PROPERTY HIGHLIGHTS

- Inside Tualatin UGB
- "Contractor establishment" use granted by the County
- Flat topography
- Close I-5 proximity
- Southwest Portland suburban location

OFFERING SUMMARY

Sale Price: \$4,560,000

Lot Size: 4.99 Acres



Clayton Madey
503.972.7277
clayton@macadamforbes.com
Licensed in OR

FOR SALE

11190 SW Tonquin Pl, Sherwood, OR 97140



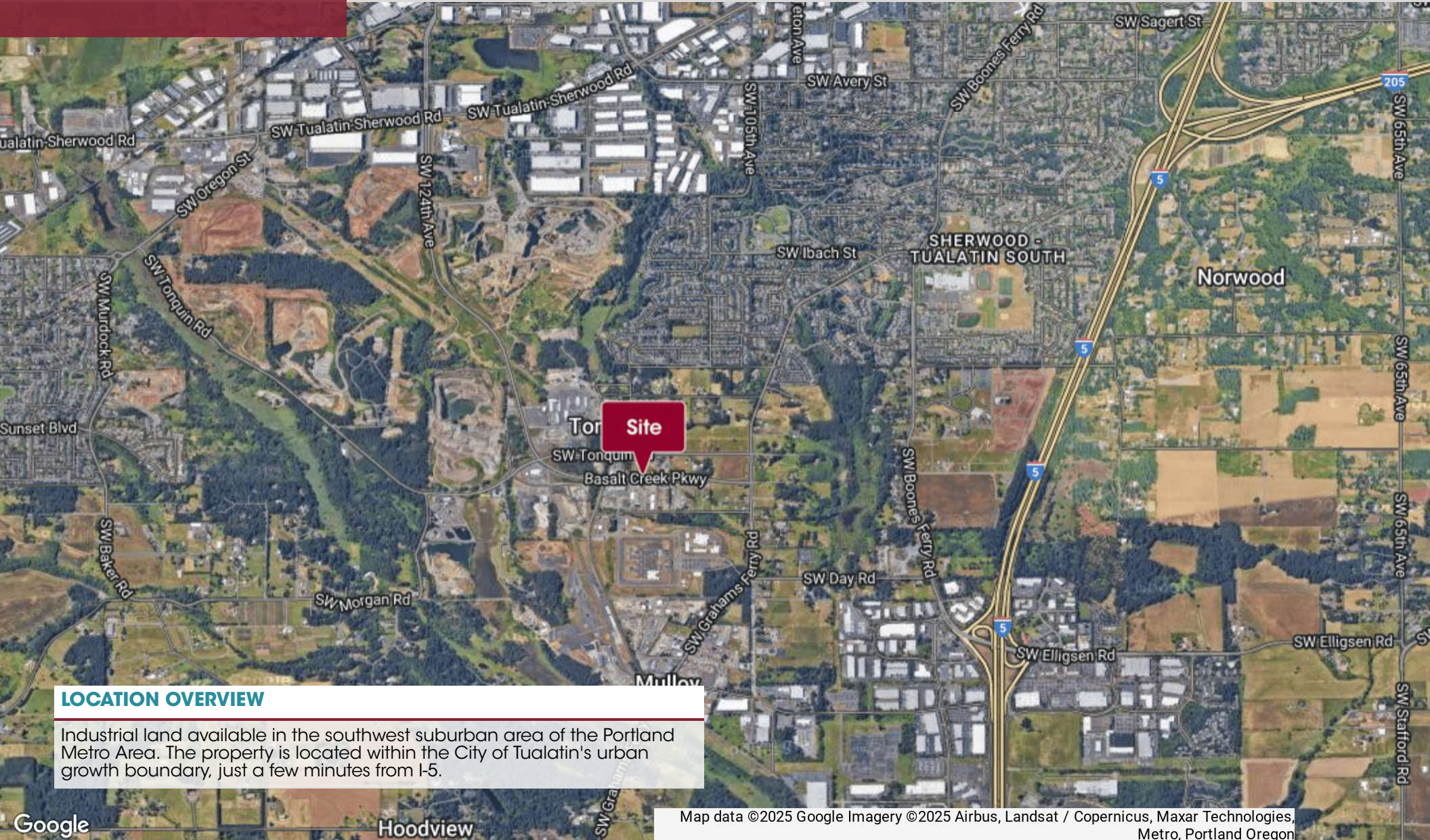
Clayton Madey
503.972.7277
clayton@macadamforbes.com
Licensed in OR

All of the information contained herein was obtained either from the owner or other parties we consider reliable. We have no reason to doubt its accuracy, however we do not guarantee it.

MACADAMFORBES.COM | 503.227.2500

FOR SALE

11190 SW Tonquin Pl, Sherwood, OR 97140



LOCATION OVERVIEW

Industrial land available in the southwest suburban area of the Portland Metro Area. The property is located within the City of Tualatin's urban growth boundary, just a few minutes from I-5.

Map data ©2025 Google Imagery ©2025 Airbus, Landsat / Copernicus, Maxar Technologies, Metro, Portland Oregon



Clayton Madey
503.972.7277
clayton@macadamforbes.com
Licensed in OR

All of the information contained herein was obtained either from the owner or other parties we consider reliable. We have no reason to doubt its accuracy, however we do not guarantee it.

MACADAMFORBES.COM | 503.227.2500