

MAJOR PRICE REDUCTION!



RATH EQUITY, LTD.

**8,546 SF
MEDICAL BUILDING
FOR LEASE
AND SALE**

6620 CLOUGH PIKE
CINCINNATI, OH 45244

**LEASE RATE:
\$17 P/SF MG**

**SALE PRICE:
\$1,075,000**

PROPERTY OVERVIEW

This exceptional property boasts 16 meticulously designed exam room suites, complemented by a state-of-the-art X-Ray imaging room. With recent renovations, including a new HVAC system installed in 2021, this facility offers modern comfort and efficiency. Situated strategically along the area's thriving retail and office corridor, it enjoys high daily traffic counts exceeding 14,000 vehicles, ensuring excellent visibility and accessibility. Just minutes away from I-275, with over 62,000 vehicles passing daily, and in close proximity to the recently expanded Mercy Health Anderson Hospital, this location offers unparalleled convenience for both medical professionals and patients. Nestled in a densely populated and affluent area, with an impressive average household income of \$163,000 within a 1-mile radius and more than 136,000 residents within a 5-mile radius, this property represents a prime lease opportunity.

LEASE PRICE

\$17 P/SF MG

SALE PRICE

\$1,075,000

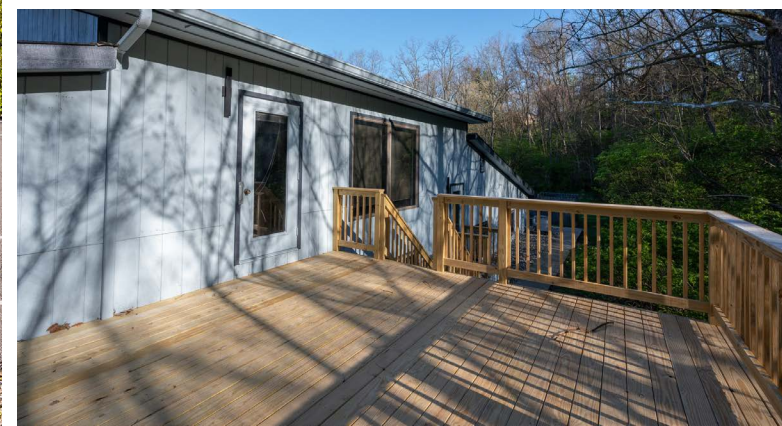
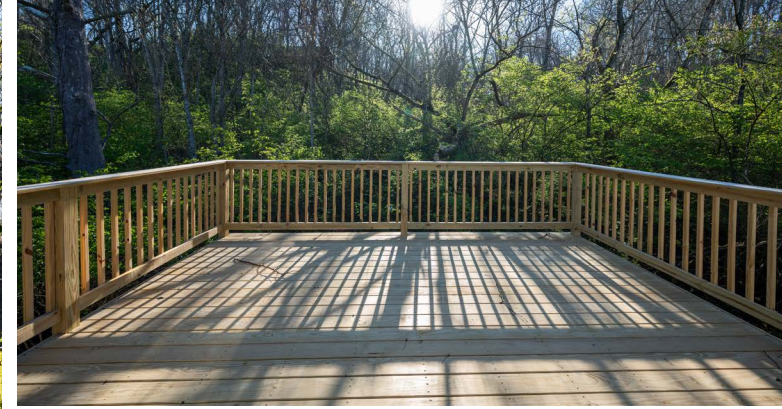
AVAILABLE SF

8,546 SF +/-

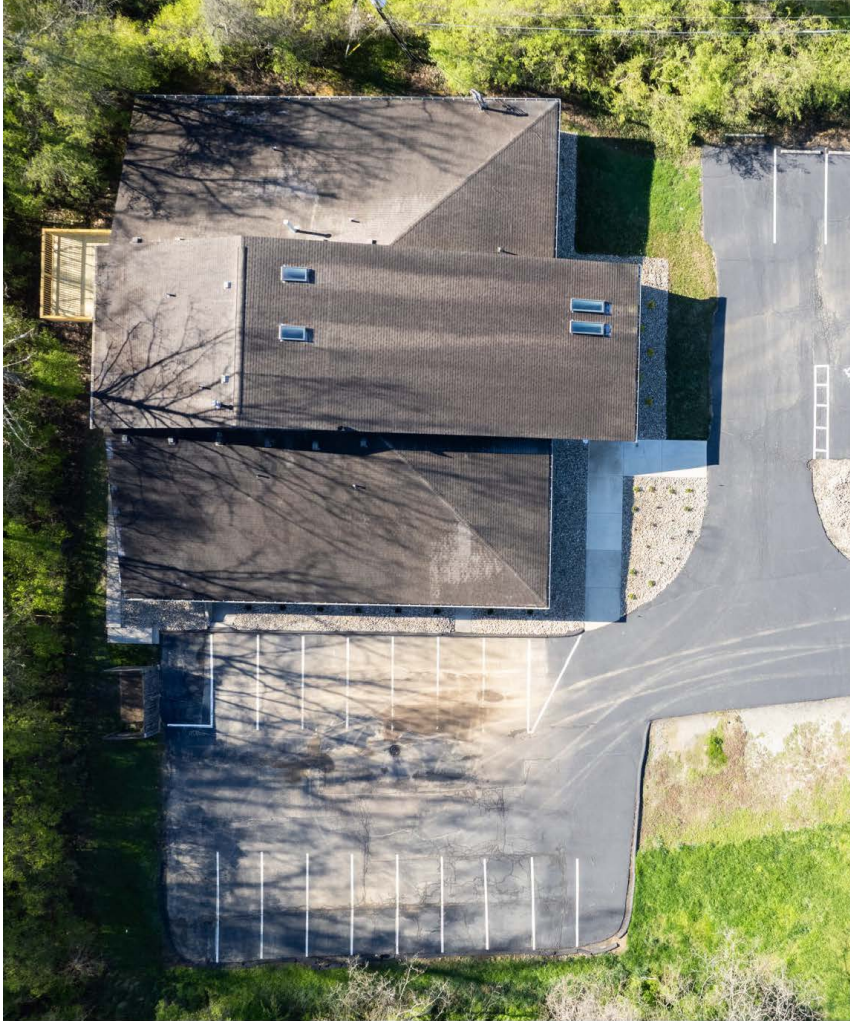
PROPERTY HIGHLIGHTS

- > 16 Exam Room Suites and Newly Built Out X-Ray Imaging Room
- > Misc. renovations over the years including HVAC being replaced in 2021
- > Positioned Along Area's Retail & Office Corridor.
- > Features Easy Access and Excellent Visibility with Daily Traffic Counts Exceeding 14k Vehicles.
- > Minutes from Interstate-275 (62k+ VPD).
- > In Close Proximity to Mercy Health Anderson Hospital - One of the Largest Hospitals in Greater Cincinnati. It has a Staff of about 1,250 including 640 Medical Personnel. Recently Completed a \$74M Hospital Expansion.
- > Densely Populated and Affluent Area: Features an Average Household Income of \$163+ within a 1-Mile Radius and more than 136k People Residing within a 5-Mile Radius.
- > Recent Property Upgrades:
 - Seal Coat and Stripping of the Parking Lot
 - Building Painting
 - Exterior Lighting
 - Deck Replacement
 - New Landscaping

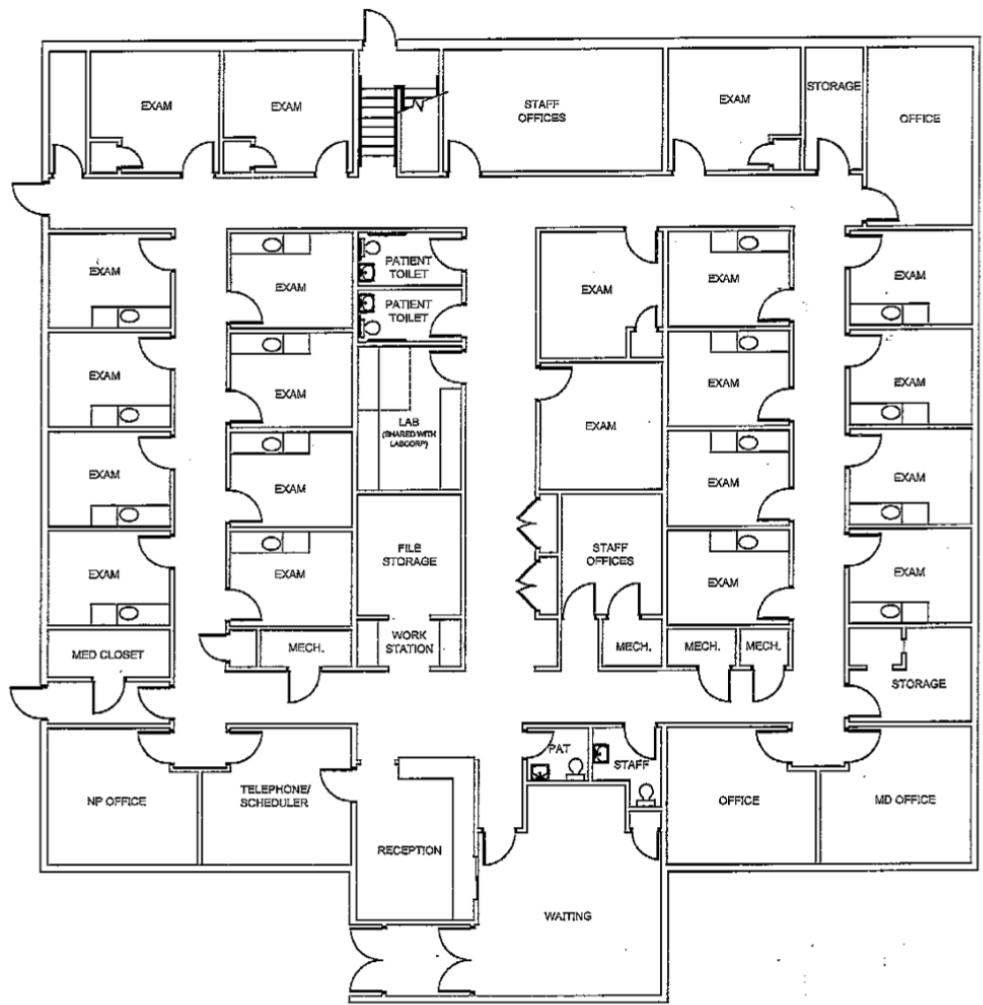
PROPERTY PHOTOS



PROPERTY PHOTOS

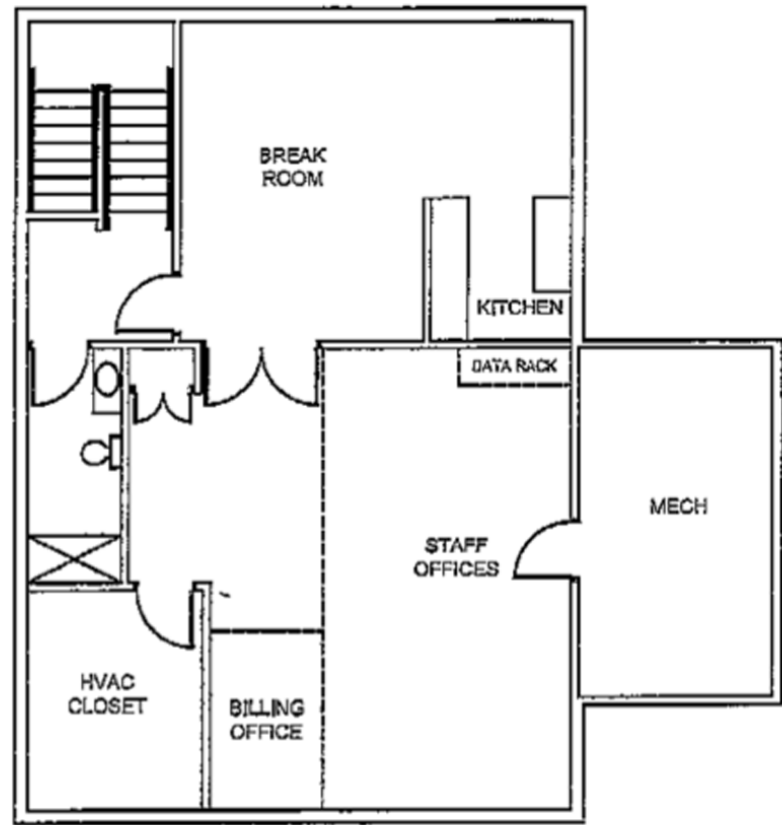


FLOOR PLAN



FIRST FLOOR

Scale: 3/32" = 1'-0"



SECOND FLOOR

Scale: 3/32" = 1'-0"

PROPERTY AERIAL



INTERSTATE 275

INTERSTATE 275

125

ANDERSON HIGH SCHOOL

TARGET
 HARBOR FREIGHT
 THE HOME DEPOT
 ALDI
 FRESH FOR EVERYONE... KROGER
 WENDY'S
 STAPLES The Office Superstore
 CHICK-FIL-E
 BIG LOTS!
 CHASE
 SHOE CARNIVAL
 TJ-maxx
 DOLLAR TREE

OLLIE'S GOOD STUFF CHEAP
 CHICKEN SALAD CHICK
 Cane's CHICKEN FINGERES
 DUNKIN'

Cincinnati Children's

The Christ Hospital Health Network
 Panera BREAD
 crumbl cookies
 BUFFALO WILD WINGS
 MCDONALD'S

MERCYHEALTH ANDERSON HOSPITAL

FRESH FOR EVERYONE... KROGER
 ANDERSON TOWNE CENTER
 CARRABBA'S ITALIAN GRILL
 Moe's southwest grill
 AMC THEATRES
 CRUNCH FITNESS
 macy's
 IHOP
 CVS pharmacy
 STARBUCKS COFFEE
 PNC
 OUTBACK STEAKHOUSE
 petco

FIVE MILE RD

WILSON ELEMENTARY SCHOOL



TURPIN HIGH SCHOOL

1 MILE KEY FACTS

DEMOGRAPHICS

2023 SUMMARY	1 MILE	3 MILES	5 MILES
Population	8,507	52,506	139,278
Households	3,333	21,107	60,121
Families	2,230	13,683	34,504
Average Household Size	2.55	2.47	2.30
Owner Occupied Housing Units	2,765	16,027	40,651
Renter Occupied Housing Units	568	5,080	19,470
Median Age	41.9	42.2	40.7
Median Household Income	\$114,327	\$97,196	\$87,839
Average Household Income	\$163,710	\$135,773	\$132,966

2028 SUMMARY	1 MILE	3 MILES	5 MILES
Population	8,533	52,284	139,104
Households	3,391	21,244	60,726
Families	2,250	13,722	34,704
Average Household Size	2.52	2.44	2.27
Owner Occupied Housing Units	2,763	16,052	41,177
Renter Occupied Housing Units	628	5,192	19,548
Median Age	42.5	43.2	41.6
Median Household Income	\$127,090	\$109,729	\$102,492
Average Household Income	\$183,834	\$155,115	\$150,689



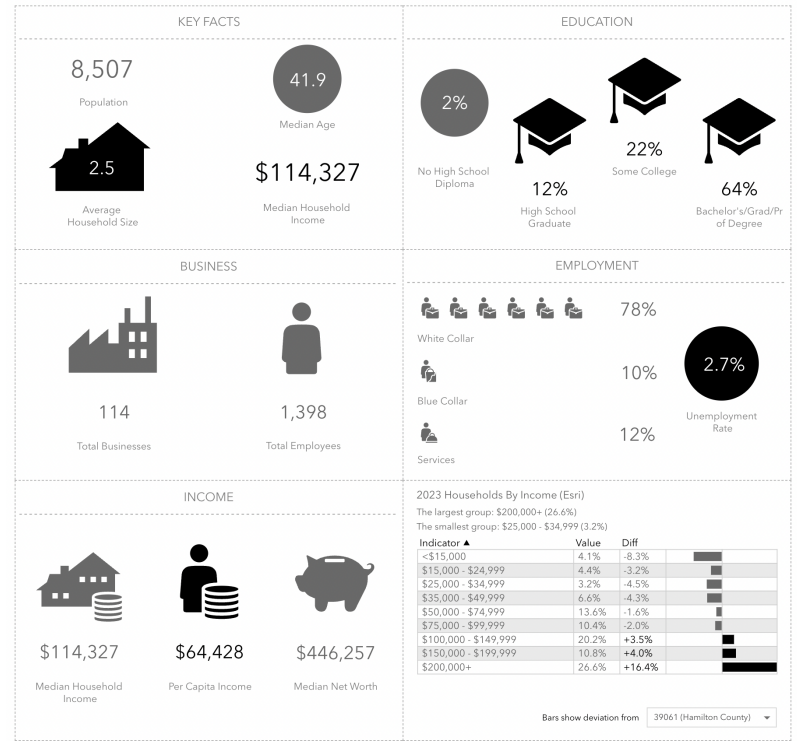
139,278
5-Mile
Population



\$87,839
5-Mile Median
Household Income

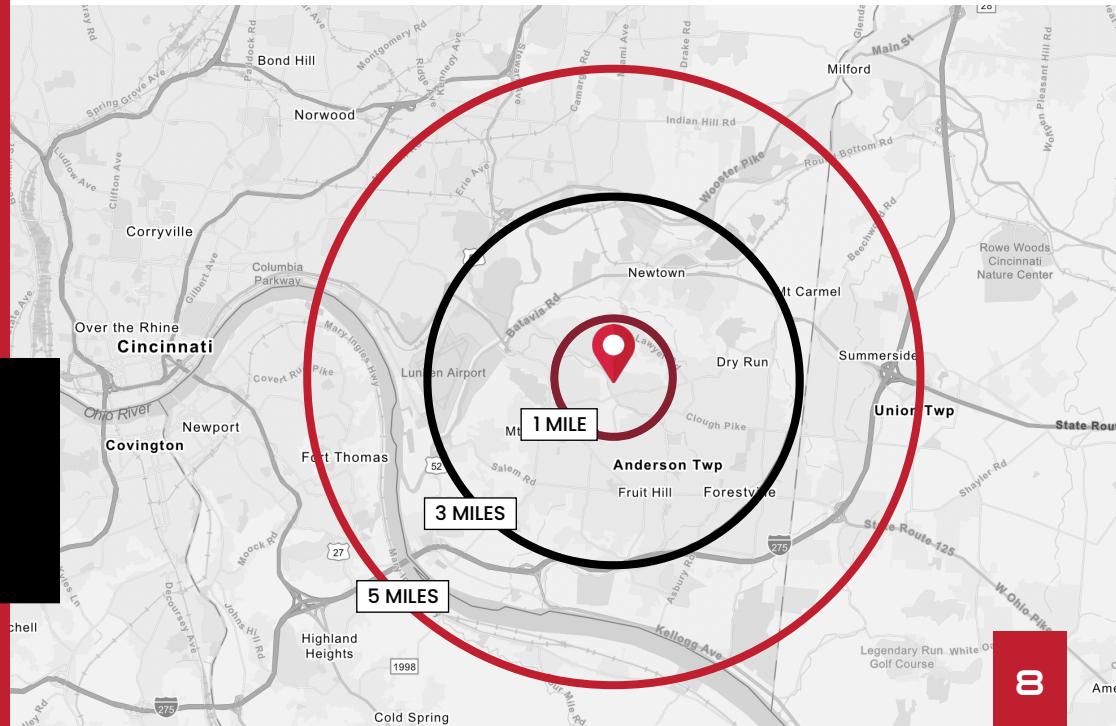


60,121
5-Mile
Households



This infographic contains data provided by Esri, Esri and Data Axle. The vintage of the data is 2021, 2026.

© 2021 Esri



CONFIDENTIALITY DISCLAIMER

PRESENTED
EXCLUSIVELY BY:



ADAM RATH | BROKER
adam@rathequity.com
513.888.8669
rathequity.com

All materials and information received or derived from Rath Equity, its directors, officers, agents, advisors, affiliates and/or any third party sources are provided without representation or warranty as to completeness, veracity, or accuracy, condition of the property, compliance or lack of compliance with applicable governmental requirements, developability or suitability, financial performance of the property, projected financial performance of the property for any party's intended use or any and all other matters.

Neither Rath Equity, its directors, officers, agents, advisors, or affiliates makes any representation or warranty, express or implied, as to accuracy or completeness of the any materials or information provided, derived, or received. Materials and information from any source, whether written or verbal, that may be furnished for review are not a substitute for a party's active conduct of its own due diligence to determine these and other matters of significance to such party. Rath Equity will not investigate or verify any such matters or conduct due diligence for a party unless otherwise agreed in writing.

EACH PARTY SHALL CONDUCT ITS OWN INDEPENDENT INVESTIGATION AND DUE DILIGENCE.

Any party contemplating or under contract or in escrow for a transaction is urged to verify all information and to conduct their own inspections and investigations including through appropriate third party independent professionals selected by such party. All financial data should be verified by the party including by obtaining and reading applicable documents and reports and consulting appropriate independent professionals. Rath Equity makes no warranties and/or representations regarding the veracity, completeness, or relevance of any financial data or assumptions. Rath Equity does not serve as a financial advisor to any party regarding any proposed transaction.

All data and assumptions regarding financial performance, including that used for financial modeling purposes, may differ from actual data or performance. Any estimates of market rents and/or projected rents that may be provided to a party do not necessarily mean that rents can be established at or increased to that level. Parties must evaluate any applicable contractual and governmental limitations as well as market conditions, vacancy factors and other issues in order to determine rents from or for the property. Legal questions should be discussed by the party with an attorney. Tax questions should be discussed by the party with a certified public accountant or tax attorney. Title questions should be discussed by the party with a title officer or attorney. Questions regarding the condition of the property and whether the property complies with applicable governmental requirements should be discussed by the party with appropriate engineers, architects, contractors, other consultants and governmental agencies. All properties and services are marketed by Rath Equity in compliance with all applicable fair housing and equal opportunity laws.