

THE TERRACES

2300 CONTRA COSTA BLVD., PLEASANT HILL, CA 94523



CBRE

THE TERRACES

2300 CONTRA COSTA BLVD., PLEASANT HILL, CA 94523

PROPERTY HIGHLIGHTS

- ◆ Free abundant covered and surface parking
- ◆ On-site property management office
- ◆ On-site conference room
- ◆ On-site fitness facility
- ◆ Locker room and shower facilities
- ◆ Walking distance from local cuisine
- ◆ Close proximity to I-680 on/off ramps



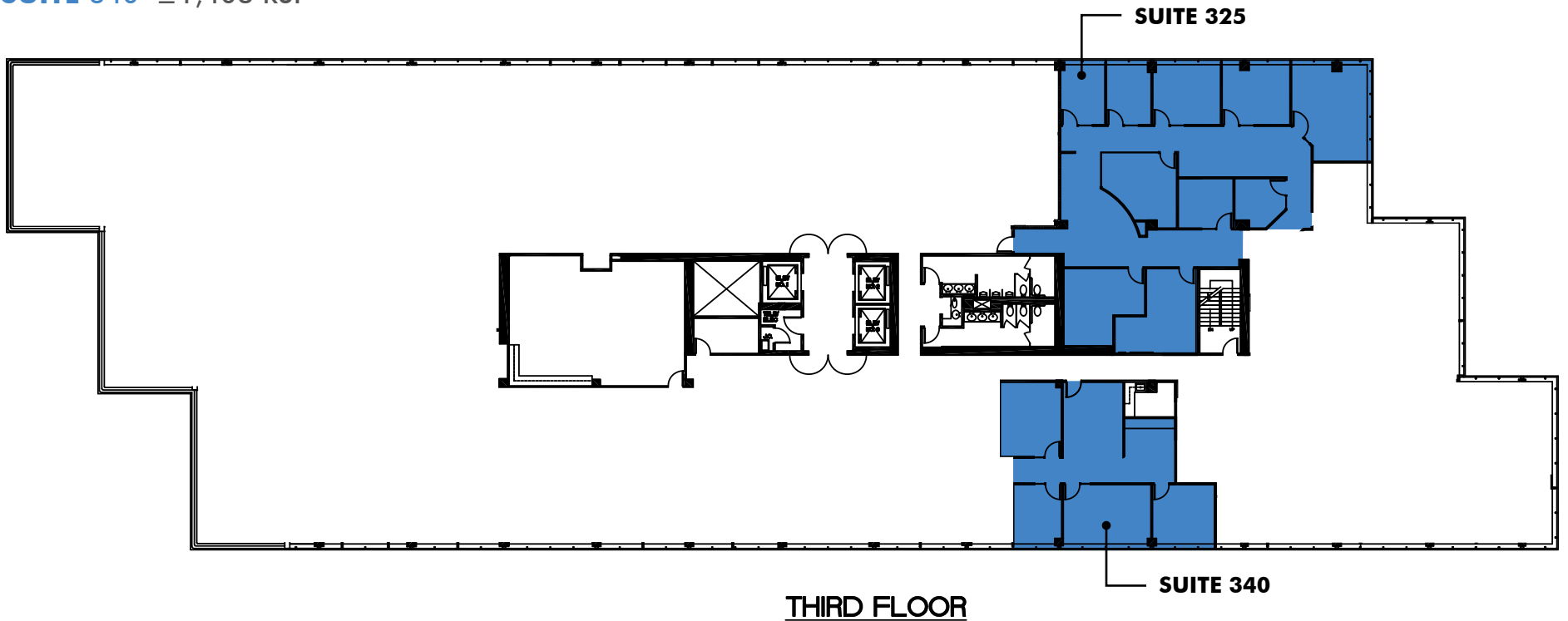
THE TERRACES

2300 CONTRA COSTA BLVD., PLEASANT HILL, CA 94523

FLOOR PLANS

SUITE 325 ±3,373 RSF

SUITE 340 ±1,408 RSF



THIRD FLOOR

SUITE 340

NOT TO SCALE

THE TERRACES

2300 CONTRA COSTA BLVD., PLEASANT HILL, CA 94523

FLOOR PLANS

6TH FLOOR 14,858 SF DIVISIBLE

CONFERENCE ROOM



VIEW FROM OFFICE TO TERRACE



6TH FLOOR

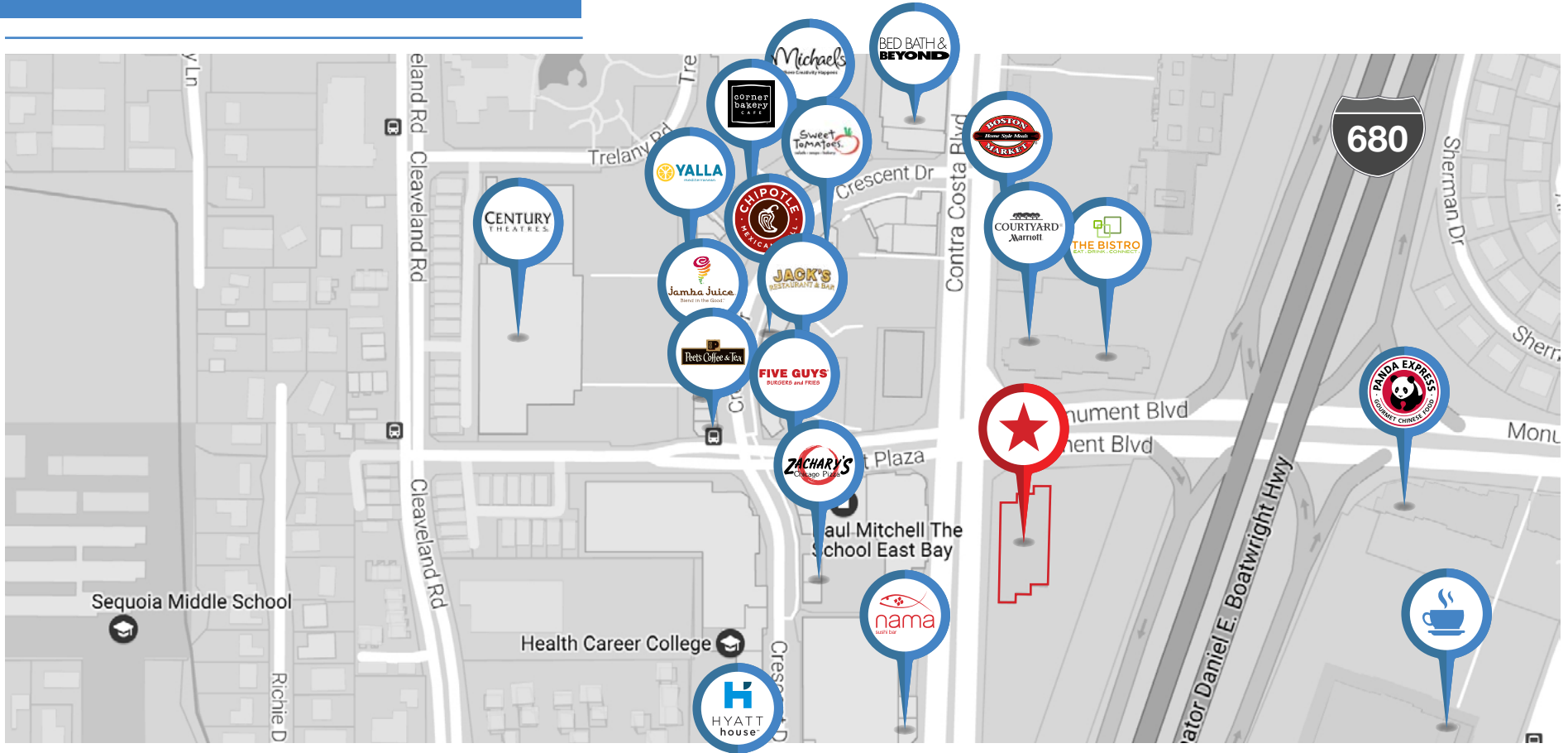


NOT TO SCALE

THE TERRACES

2300 CONTRA COSTA BLVD., PLEASANT HILL, CA 94523

AMENITIES MAP



THE TERRACES

2300 CONTRA COSTA BLVD., PLEASANT HILL, CA 94523

LEASING INFORMATION:

Adam Ebner

First Vice President

+1 925 251 4606

adam.ebner@cbre.com

Lic. 01213890

Kirk Beebe

Senior Vice President

+1 925 251 4611

kirk.beebe@cbre.com

Lic. 00854169



© 2019 CBRE, Inc. All rights reserved. This information has been obtained from sources believed reliable, but has not been verified for accuracy or completeness. You should conduct a careful, independent investigation of the property and verify all information. Any reliance on this information is solely at your own risk. CBRE and the CBRE logo are service marks of CBRE, Inc. All othermarks displayed onthis document are the property of their respective owners, and the use of such logos doesnot imply anyaffiliation with or endorsement of CBRE. Photos herein are the property of their respective owners and use of these images without the express written consent of the owner is prohibited.



CBRE