

For Lease
±1,681-9,352 SF
Office Space



Cypress Court

6360 NW 5th Way
Fort Lauderdale, FL 33309

Property Features

- Newly renovated common areas, including new finishes, flooring, and updated restrooms
- 24-hour keycard access
- Ample parking
- Excellent location in between the Florida Turnpike and I-95
- Easy access to Fort Lauderdale Executive Airport and Cypress Creek business district
- Close to plentiful retail, dining, and banking

Key Highlights



Just west of I-95 and minutes to Florida's Turnpike



Recently upgraded common area finishes



Close to numerous conveniences and amenities

For more information:

Lesley Sheinberg, Managing Director

lsheinberg@mhcreal.com

C: 561 254 7810 | O: 561 471 8000



FOR LEASE: CYPRESS COURT, FORT LAUDERDALE

±1,681-9,352 SF Office Space Near I-95



Available Space

Suite 103: 3,233 SF

Suite 200/201: 1,681-9,352 SF

Suite 202: 1,968 SF

Rental Rate

\$16.75/SF NNN

\$13.50/SF CAM; Janitorial is included; tenant pays electric

Parking


Ample parking
(5/1,000)




FOR MORE INFORMATION:

Lesley Sheinberg, Managing Director
lsheinberg@mhcreal.com | C: 561 254 7810 | O: 561 471 8000

NO WARRANTY OR REPRESENTATION, EXPRESS OR IMPLIED, IS MADE AS TO THE ACCURACY OF THE INFORMATION CONTAINED HEREIN, AND THE SAME IS SUBMITTED SUBJECT TO ERRORS, OMISSIONS, CHANGE OF PRICE, OR WITHDRAWAL WITHOUT NOTICE.

 561 471 8000

 1601 Forum Place, Suite 700
West Palm Beach, FL 33401

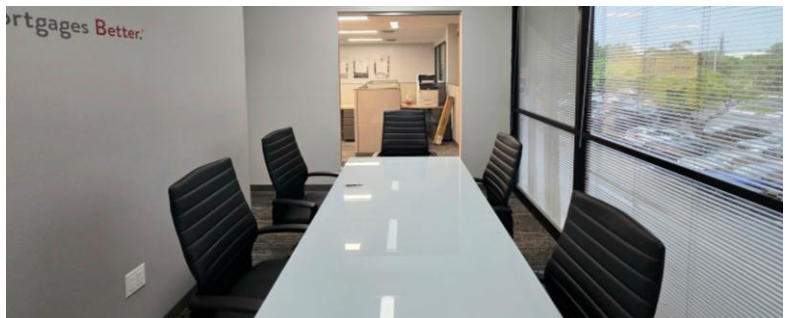
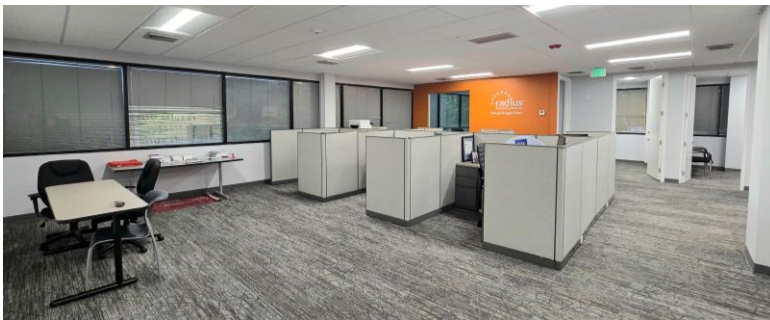
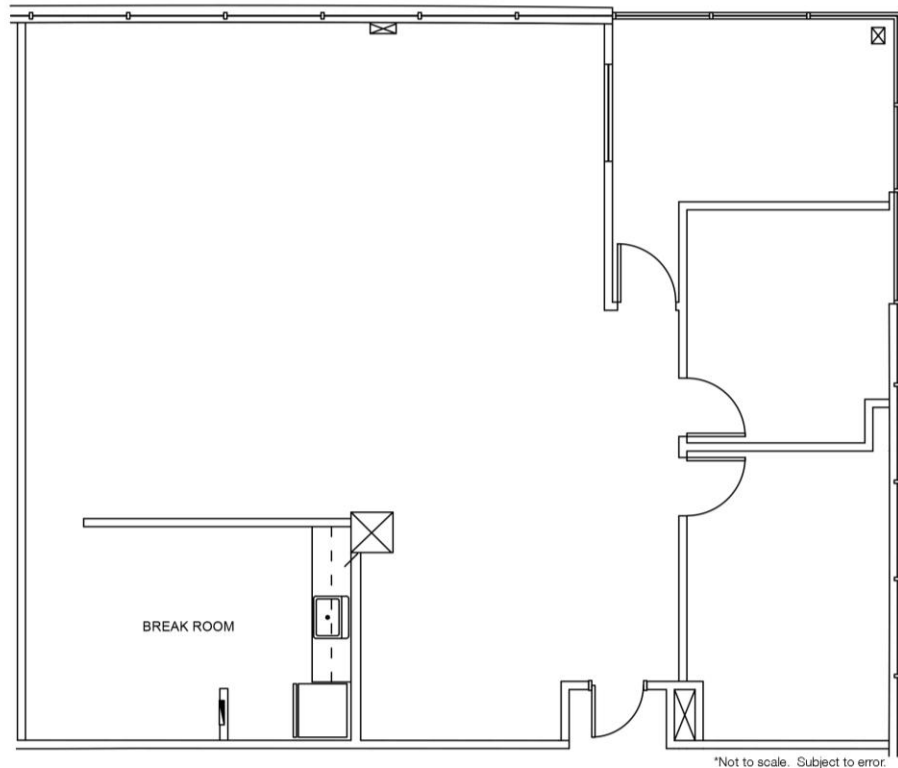
 www.mhcreal.com

FOR LEASE: CYPRESS COURT, FORT LAUDERDALE

Move-In Ready Office Space Available

Suite 202

1,968 SF



 **561 471 8000**

Lesley Sheinberg, Managing Director
lsheinberg@mhcreal.com | C: 561 254 7810