

FOR LEASE



5208 W VILLAGE PARKWAY, SUITE #5 | VILLAGE ON THE CREEKS, ROGERS, AR

Village on the Creeks is the largest garden office park in Northwest Arkansas. It houses office, retail, restaurant, and medical tenants and enhances quality of life by offering a walking trail on Razorback Greenway and a lake with beautiful views. Suite 5 offers a large open area with 12-foot ceilings, small breakroom, storage closet, and restroom.



Suite 3-5
1,808 SF



Large Open Area
Small Breakroom
Storage Closet
Restroom

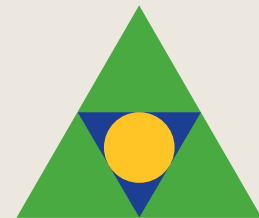


Direct access to
Razorback Greenway
and walking trails in a
beautiful setting



Quick and easy
access to
Interstate 49

\$20.00 PSF NNN



Devereux
Real Estate Investments

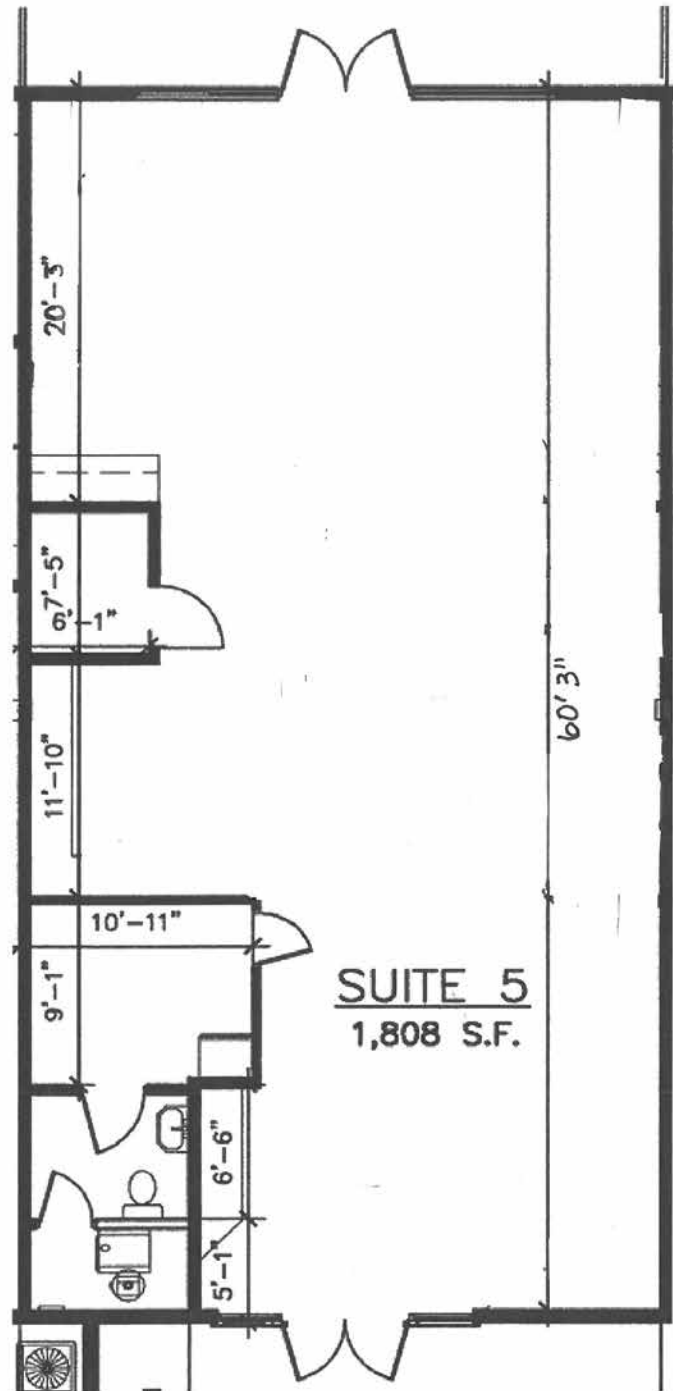
PAT MORRISON
EXECUTIVE BROKER

5309 W. VILLAGE PKWY | SUITE 2
ROGERS, AR 72758
P. 479-464-4292
C. 479-936-4200
PatMorrison@DevereuxREI.com

FLOOR PLAN

5208 W Village Parkway
Suite #5

- 1,808 SF
- Large Open Area with 12-foot Ceilings
- Small Breakroom
- Storage Closet
- Restroom



Devereux

Real Estate Investments

PAT MORRISON
EXECUTIVE BROKER

5309 W. VILLAGE PKWY | SUITE 2
ROGERS, AR 72758
P. 479-464-4292
C. 479-936-4200
PatMorrison@DevereuxREI.com



**PAT MORRISON
EXECUTIVE BROKER**

**5309 W. VILLAGE PKWY | SUITE 2
ROGERS, AR 72758
P. 479-464-4292
C. 479-936-4200
PatMorrison@DevereuxREI.com**

