

17,823 SF OFFICE BUILDING FOR SALE OR LEASE

SALE PRICE
\$3,999,000

LEASE RATE
\$15.00-\$17.00/SF NNN



2015 SOUTH PONTIAC WAY
DENVER, COLORADO 80224

FOR MORE INFORMATION:
DAVID LEUTHOLD
C: 303.520.7729
dleuthold@stcharlestown.com
stcharlestown.com



2015 SOUTH PONTIAC WAY

ABOUT THE PROPERTY

This two-story office building is an excellent opportunity for an owner-user, which is its current use, or an investor looking for a multi-tenant lease up investment. The building is very well-maintained, has walls of windows providing abundant natural light, offers large rooms that can be used as training facilities, and has ample parking for its tenants.

The property sits on corner location in a commanding location near the E. Evans Avenue corridor in a high-density neighborhood. It has easy access from E. Evans Avenue and is in close proximity to major streets such as Monaco Street, Quebec Street, Leetsdale Parkway, and Parker Road.

PROPERTY DETAILS

SALE PRICE: \$3,999,000

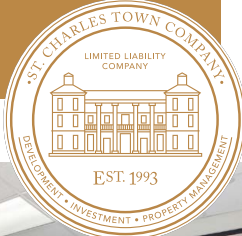
BUILDING SF	17,823 SF
OCCUPANCY	100% (lease expires 12/31/24)
LAND AREA	41,451 SF (0.95 Acre)
ZONING	S-CC-3X
TAXES	\$59,166 (2024)

Additional Land Available at 2040 S. Oneida Street

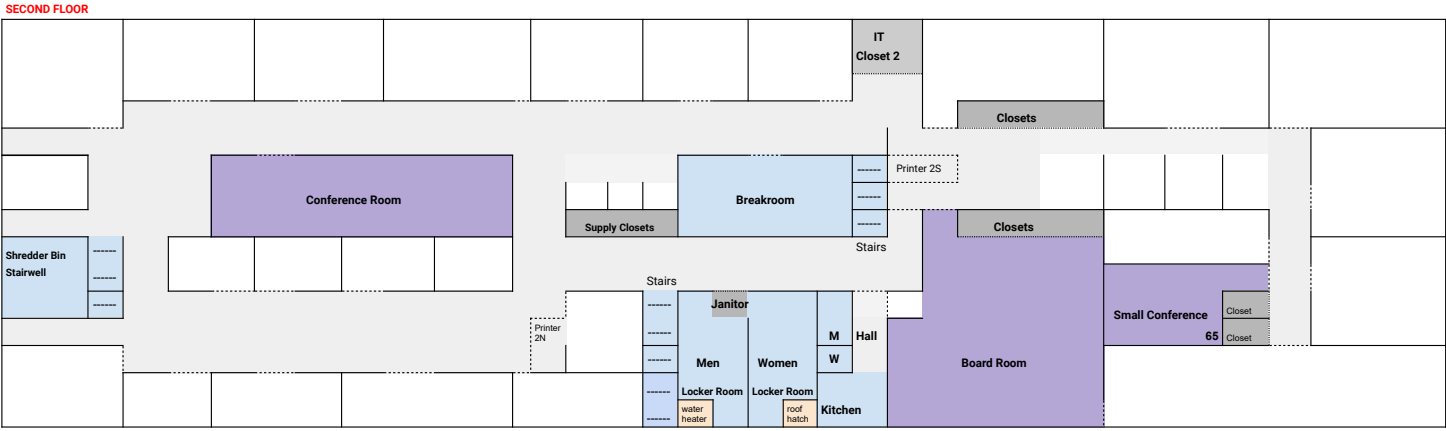
SALE PRICE: \$600,000

LAND AREA	19,200 SF (0.44 Acre)
ZONING	S-CC-3X
TAXES	\$16,603 (2024)



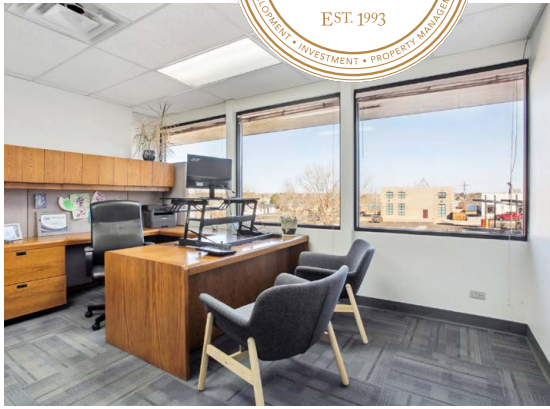


FLOORPLAN



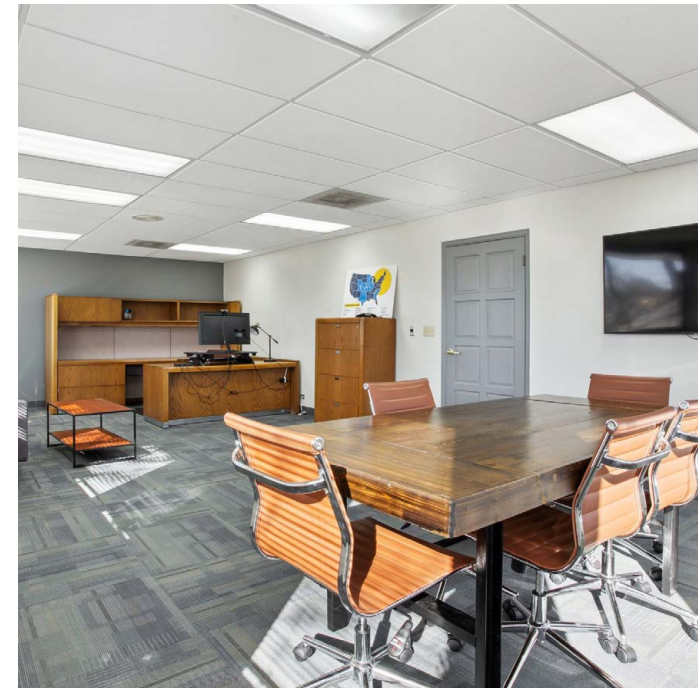
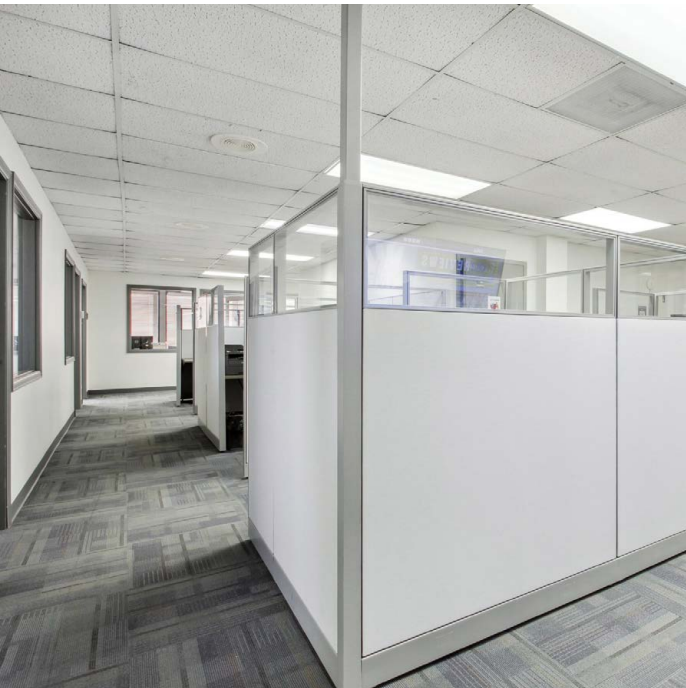
Hallway/Open Space
 Common Areas
 Storage Closets
 Meeting Spaces

Map is not to scale.

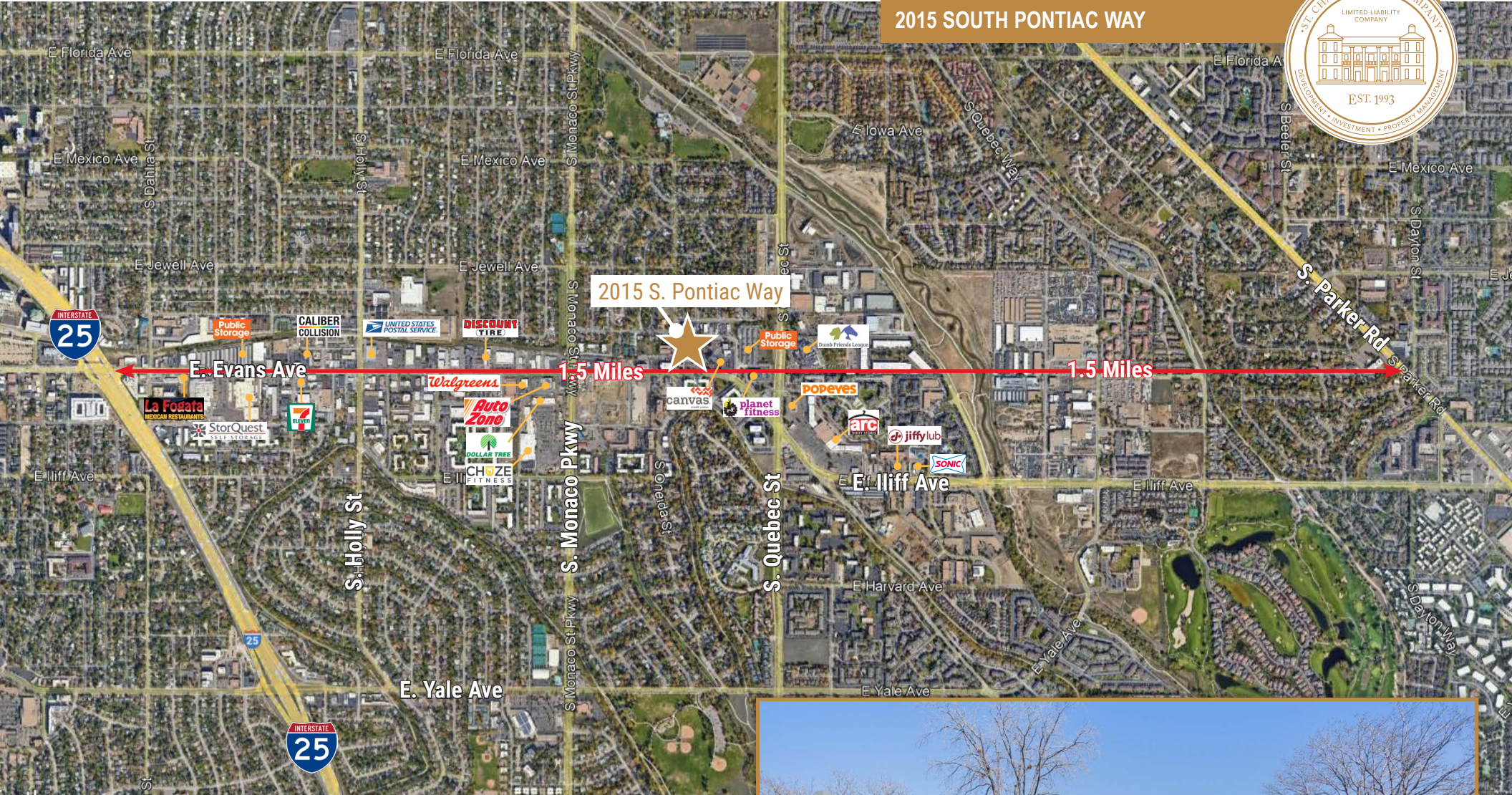




2015 SOUTH PONTIAC WAY



2015 SOUTH PONTIAC WAY



FOR MORE INFORMATION:
DAVID LEUTHOLD
 C: 303.520.7729
 dleuthold@stcharlestown.com
 stcharlestown.com

NO WARRANTY OR REPRESENTATION, EXPRESS OR IMPLIED, IS MADE AS TO THE ACCURACY OF THE INFORMATION CONTAINED HEREIN, AND THE SAME IS SUBMITTED SUBJECT TO ERRORS, OMISSIONS, CHANGE OF PRICE, RENTAL OR OTHER CONDITIONS, PRIOR SALE, LEASE OR FINANCING, OR WITHDRAWAL WITHOUT NOTICE, AND OF ANY SPECIAL LISTING CONDITIONS IMPOSED BY OUR PRINCIPALS NO WARRANTIES OR REPRESENTATIONS ARE MADE AS TO THE CONDITION OF THE PROPERTY OR ANY HAZARDS CONTAINED THEREIN ARE ANY TO BE IMPLIED.

